

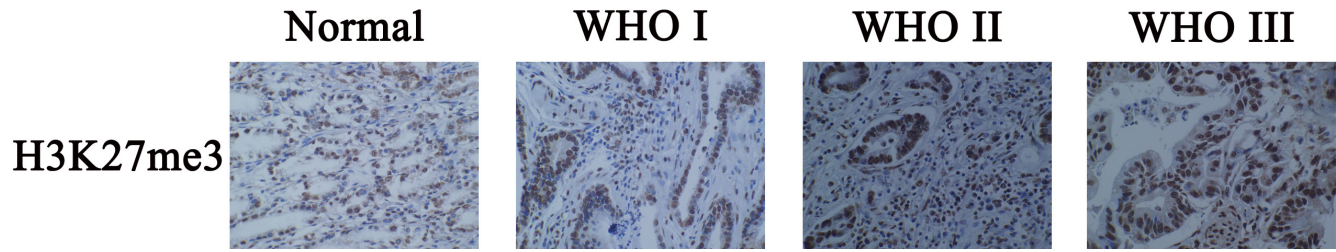
SUPPLEMENTARY TABLES AND FIGURES

Supplementary Table S1: The highest ranked 184 genes in gastric cancer eGWAS

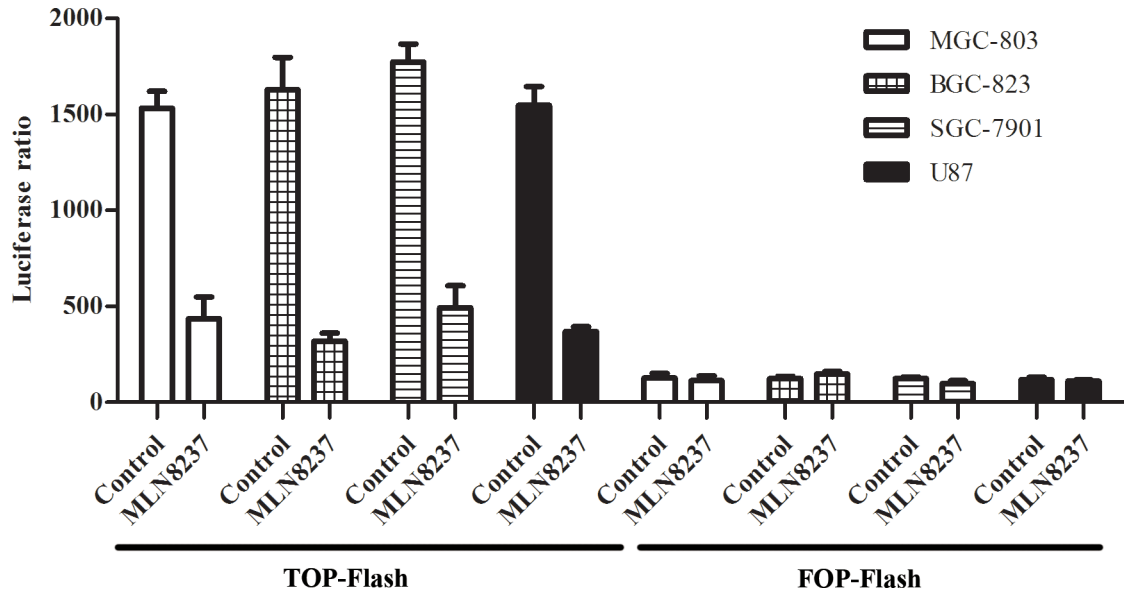
See Supplementary File 1

Supplementary Table S2: KEGG pathway analysis and calculated the enrichment P-value

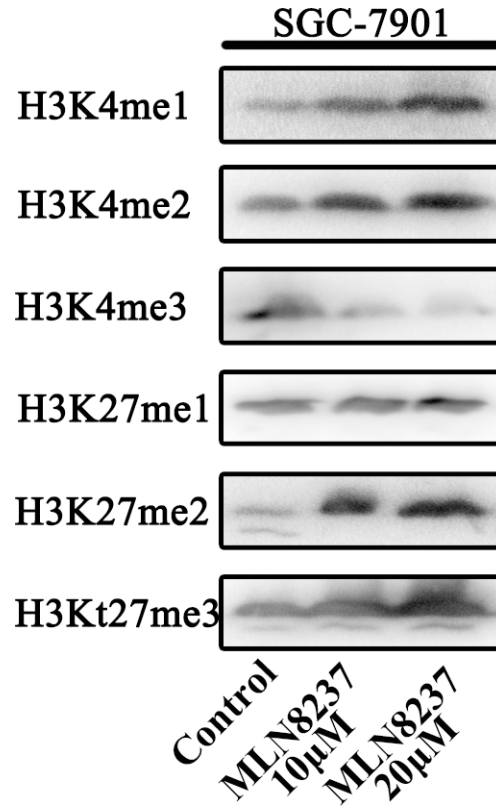
See Supplementary File 2



Supplementary Figure S1: Expression of H3K27me3 is detected in gastric cancer.



Supplementary Figure S2: The activity of Akt and Wnt signaling pathways were measured by dual-luciferase reporter assays.



Supplementary Figure S3: The change of H3K4me1/2 and H3K27me3 were concentration-dependent after the treatment of MLN8237.