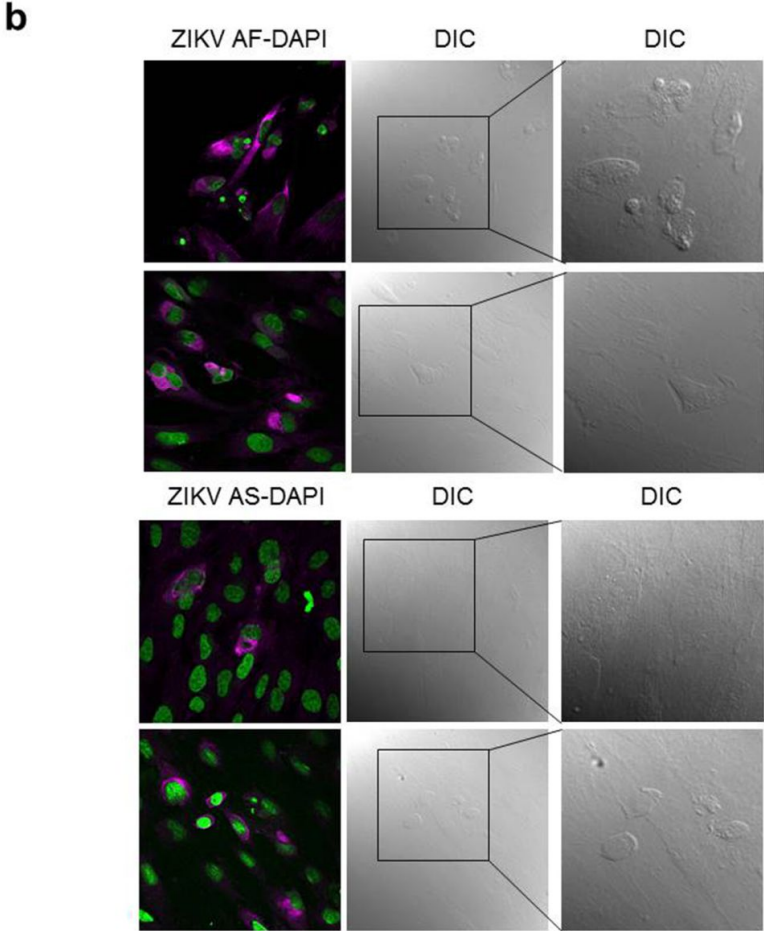
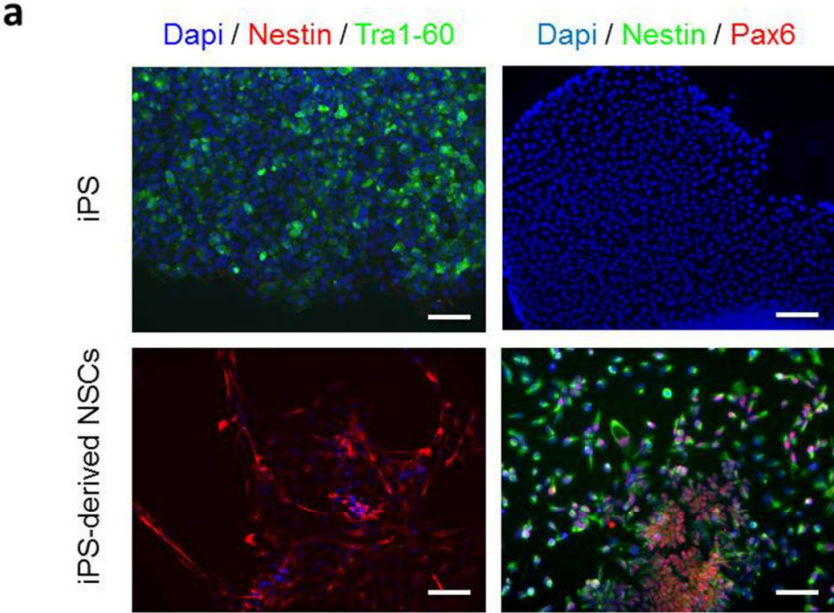


Supplemental Information



Supplemental Figure 1:

(A) IF studies showing iPSCs expressing pluripotency markers TRA1-60 and iPSC-derived NSCs expressing neural progenitor markers Nestin and Pax6. Scale bar 100  $\mu\text{m}$ .

(B) Transmitted light image of ZIKV AF and AS-infected NSCs at day 4 post infection show scarcely ECPs (zoom panels, black box are shown in the right). The virus is labeled using a pan-flavivirus antibody (magenta) and nuclei by DAPI (false colored in green). Scale bar = 10  $\mu\text{m}$ .

Genes			
AIM1	CYLD	IL1B	MYD88
APOBEC3G	TKFC	CXCL8	NFKB1
ATG5	DDX3X	IRAK1	NLRP3
AZI2	DDX58	IRF7	OAS2
CARD9	DHX58	ISG15	PIN1
CASP1	FADD	JUN	PYCARD
CASP8	FOS	MAP2K1	RELA
CCL5	HSP90AA1	MAP2K3	RIPK1
CD40	IFIH1	MAP3K1	SPP1
CD86	IFNA1	MAP3K7	STAT1
CHUK	IFNA2	MAPK1	TLR3
CTSB	IFNAR1	MAPK14	TNF
CTSL	IFNB1	MAPK3	TRAF3
CTSS	IKBKB	MAPK8	TRAF6
CXCL10	IL12A	MAVS	TRIM25
CXCL11	IL12B	MX1	

### Supplemental Table

List of genes analyzed in this study.