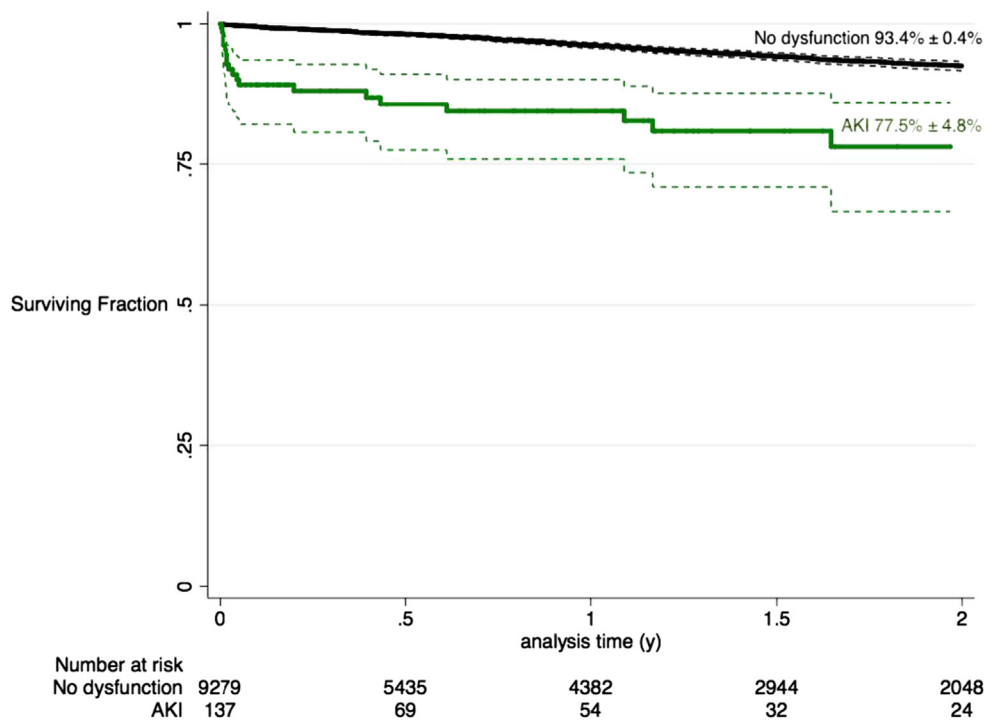


**Supplementary Table (online only).** Cox mortality hazard model

	Hazard ratio	95% CI	P value
AKI	2.32	1.78-3.02	<.001
New HD	4.91	2.79-8.62	<.001
ECG or clinical MI postoperatively	2.19	1.25-3.84	.006
Preoperative CHF	1.79	1.47-2.18	<.001
Return to operating room	1.67	1.20-2.32	.002
Postoperative vasopressors	1.61	1.22-2.12	.001
Unfit for open repair	1.57	1.31-1.88	<.001
New CHF postoperatively	1.40	0.94-2.08	.10
Arterial injury	1.30	0.94-1.81	.11
Unfit for general anesthesia	1.29	0.91-1.81	.15
Concomitant procedure	1.26	1.05-1.51	.01
Troponin elevation postoperatively	1.26	0.77-2.08	.35
Transfusion postoperatively	1.05	1.01-1.09	.007
Age, years	1.04	1.03-1.05	<.001
ICU stay, days	1.02	1.00-1.04	.14
AAA maximum AP diameter, mm	1.00	1.00-1.00	.06
Procedure time, minutes	1.00	1.00-1.00	<.001
Crystalloid intraoperatively, mL	1.00	1.00-1.00	.003
eGFR $\geq 60$ mL/min/1.73 m <sup>2</sup>	0.78	0.66-0.92	.004
Concomitant renal stent	0.76	0.56-1.04	.09

AAA, Abdominal aortic aneurysm; AKI, acute kidney injury; AP, anteroposterior; CHF, congestive heart failure; CI, confidence interval; ECG, electrocardiography; eGFR, estimated glomerular filtration rate; HD, hemodialysis; ICU, intensive care unit; MI, myocardial infarction.  
Harrell C statistic = 0.749.



**Supplementary Fig (online only).** Actuarial survival stratified by renal outcome in patients with a preoperative estimated glomerular filtration rate (eGFR)  $\geq 60$  mL/min/1.73 m<sup>2</sup>. Reported as a 2-year estimate  $\pm$  standard error of the mean with 95% confidence interval (CI) bounds. AKI, Acute kidney injury.