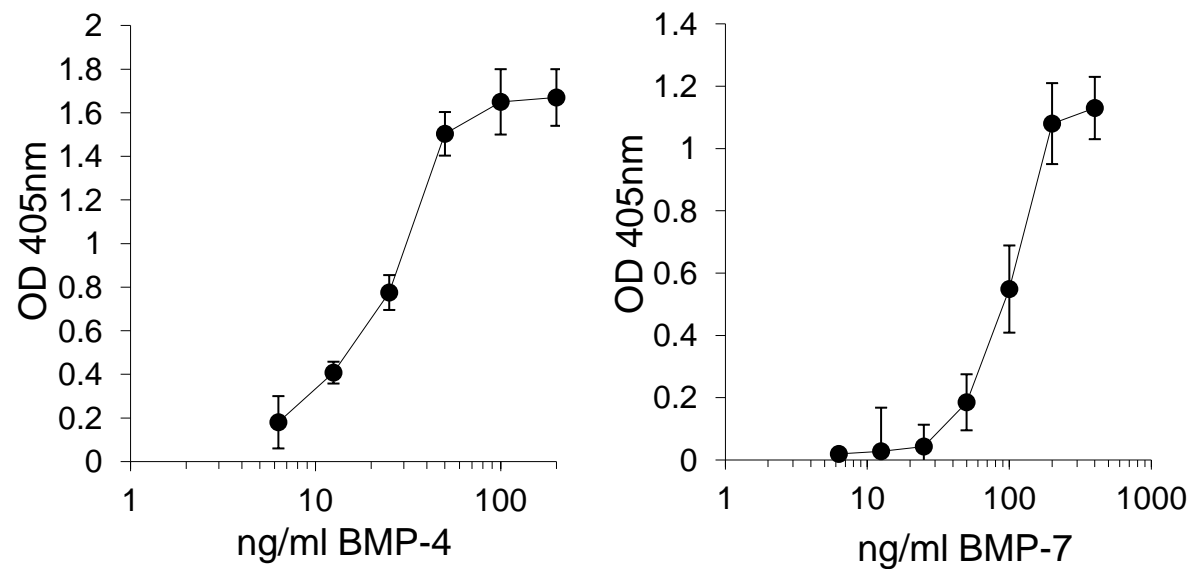


**Supplementary Figure 1: SPR sensorgrams showing native and deglycosylated Tsg binding to chordin and BMP-7.**

Tsg was immobilised on Biacore CM5 chip via amine coupling. Full-length chordin and BMP-7 (both R&D systems) were injected on to either native or deglycosylated Tsg (1200 RU immobilised) at increasing concentrations.



**Supplementary Figure 2: Dose response curves of BMP-4 and -7 in ALP assays.**

Titration experiments were performed to generate dose response curves for BMP-4 and BMP-7 induced ALP production in C2C12 cells. The ED50 were determined for BMP-4 (27 ng/ml (1.0 nM)) and BMP-7 (100 ng/ml (3.2 nM)).