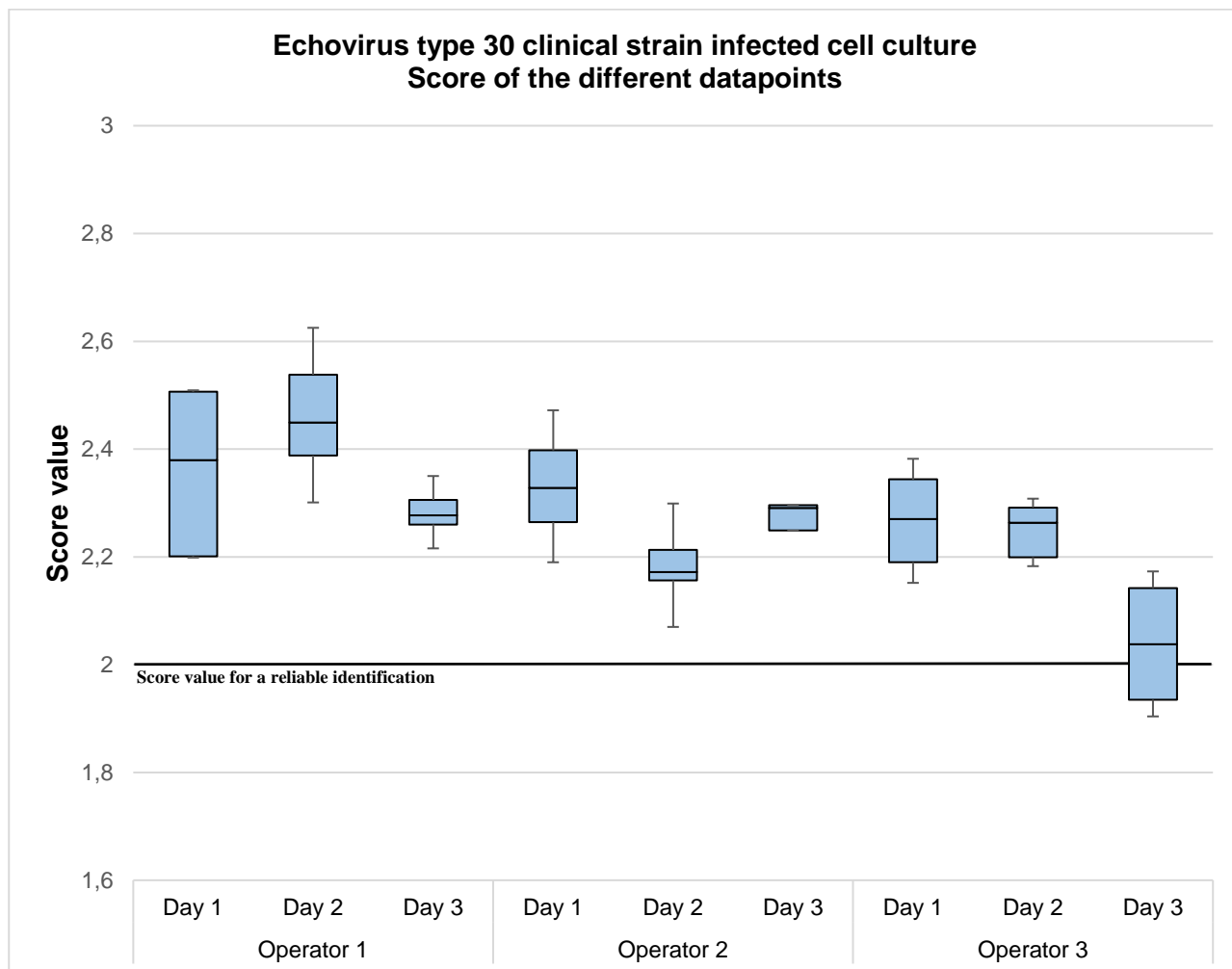


IDENTIFICATION OF DIFFERENT RESPIRATORY VIRUSES, AFTER A CELL CULTURE STEP, BY MATRIX ASSISTED LASER DESORPTION/IONIZATION TIME OF FLIGHT MASS SPECTROMETRY (MALDI-TOF MS)

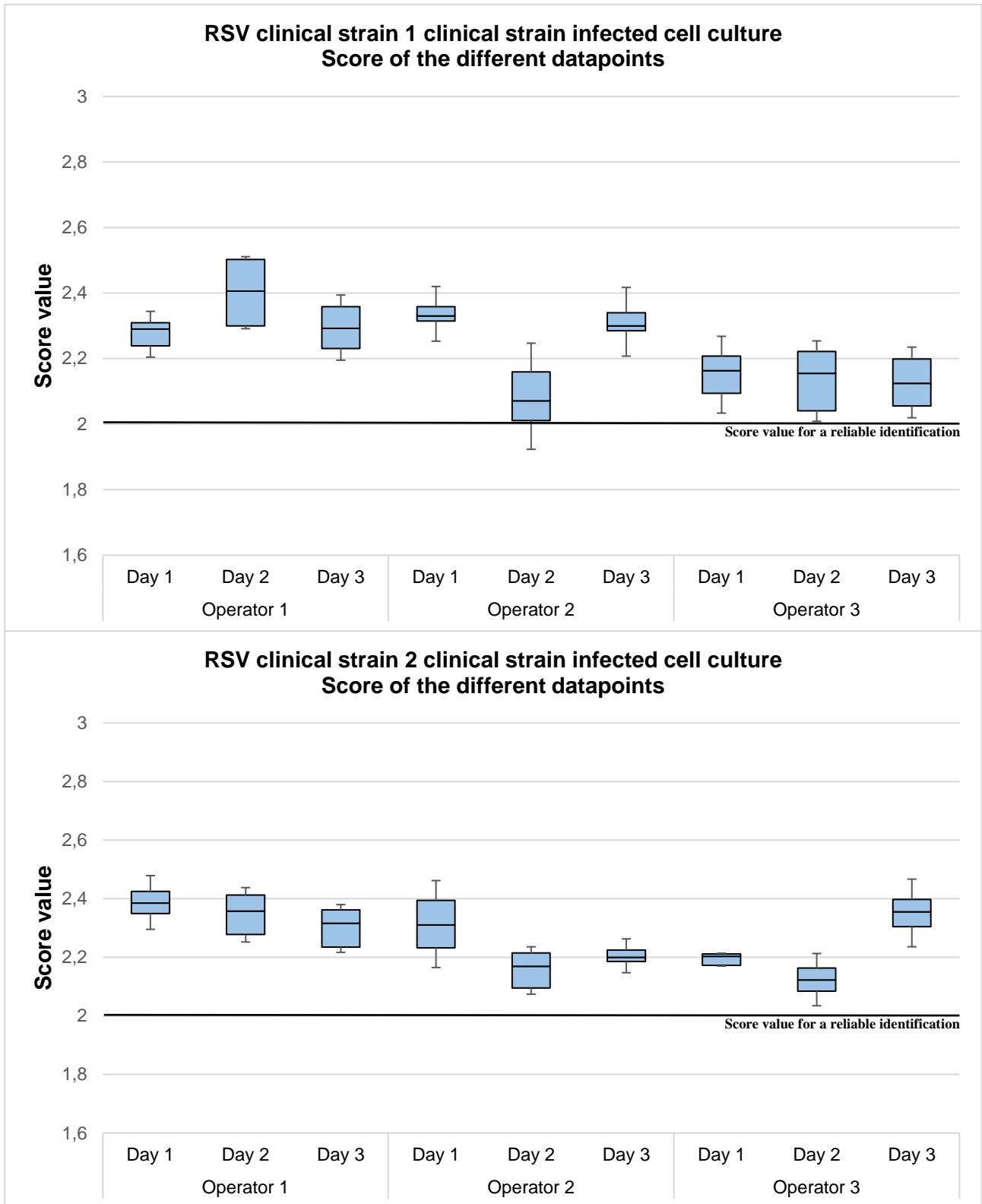
Adriana Calderaro, Maria Cristina Arcangeletti, Isabella Rodighiero, Mirko Buttrini, Sara Montecchini, Rosita Vasile Simone, Maria Cristina Medici, Carlo Chezzi, Flora De Conto
Department of Clinical and Experimental Medicine – Unit of Microbiology and Virology - University of Parma – Parma, Italy

Figure S3. Statistical analysis performed on spectra sets of different clinical strains infected cell cultures obtained in different conditions (different operators, different days).



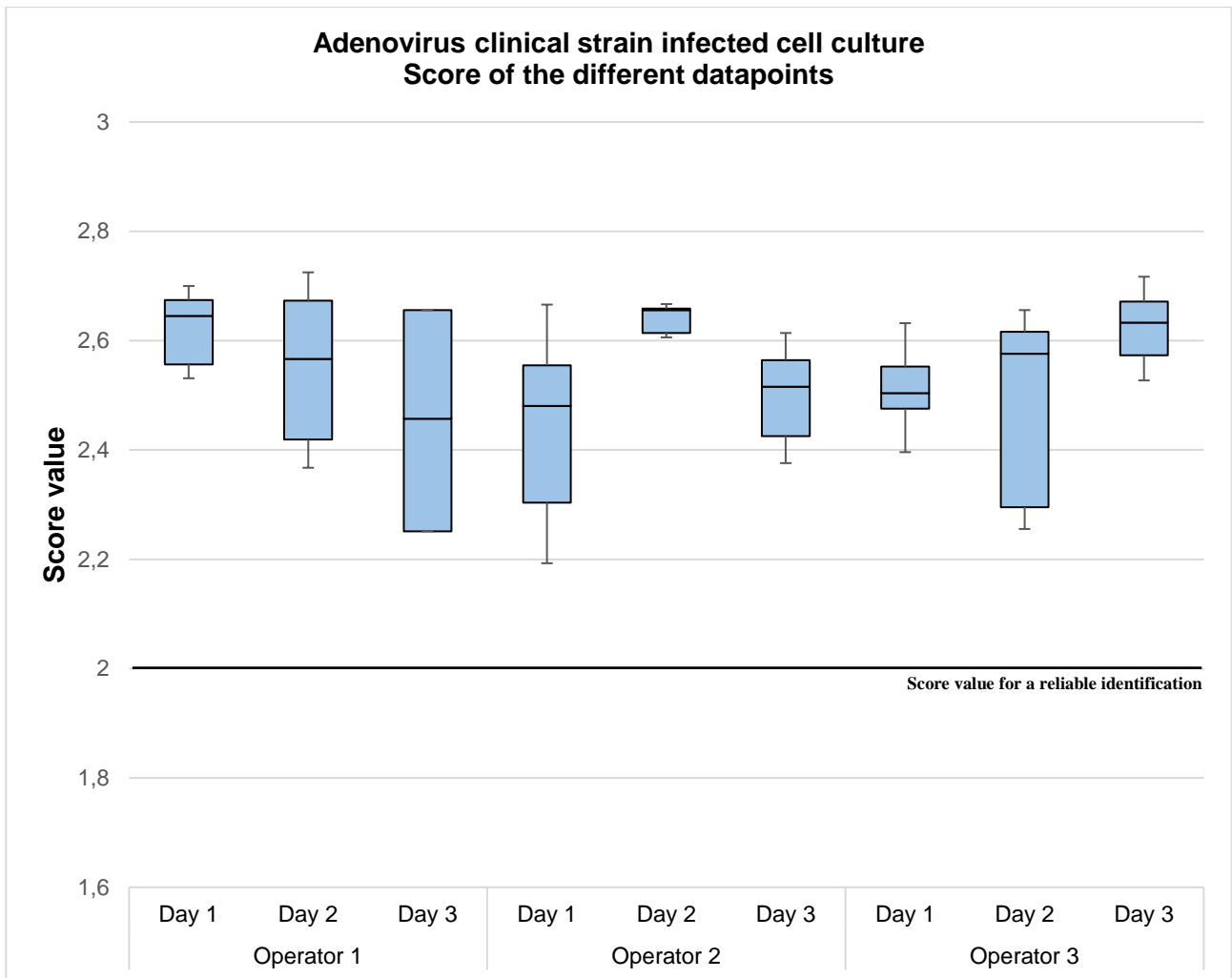
Box plot showing the distribution of score values obtained for the replicates of Echovirus type 30 clinical strain infected cell culture by three independent operators in three different days.

Box plot explanation: upper horizontal line of box, 75th percentile; lower horizontal line of box, 25th percentile; horizontal bar within box, median; upper horizontal bar outside box, 90th percentile; lower horizontal bar outside box, 10th percentile.



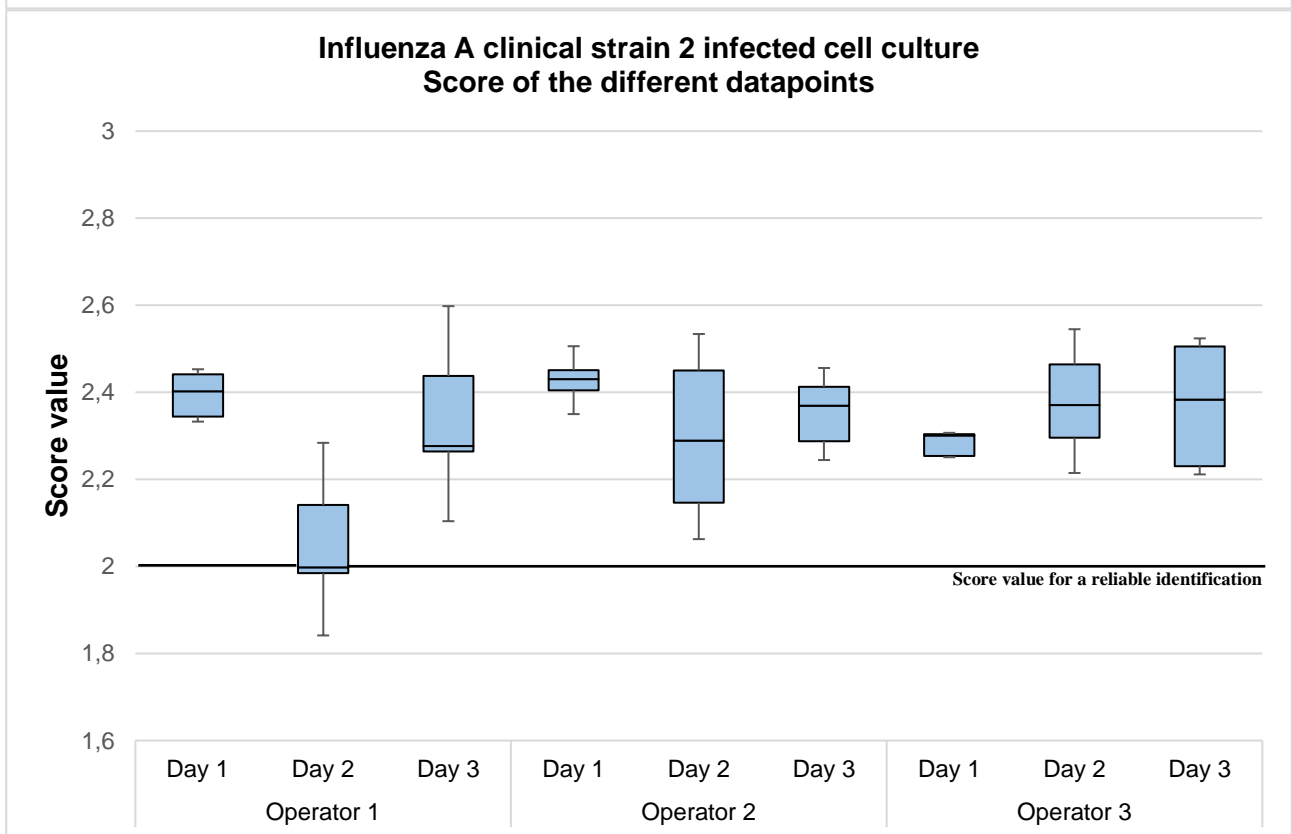
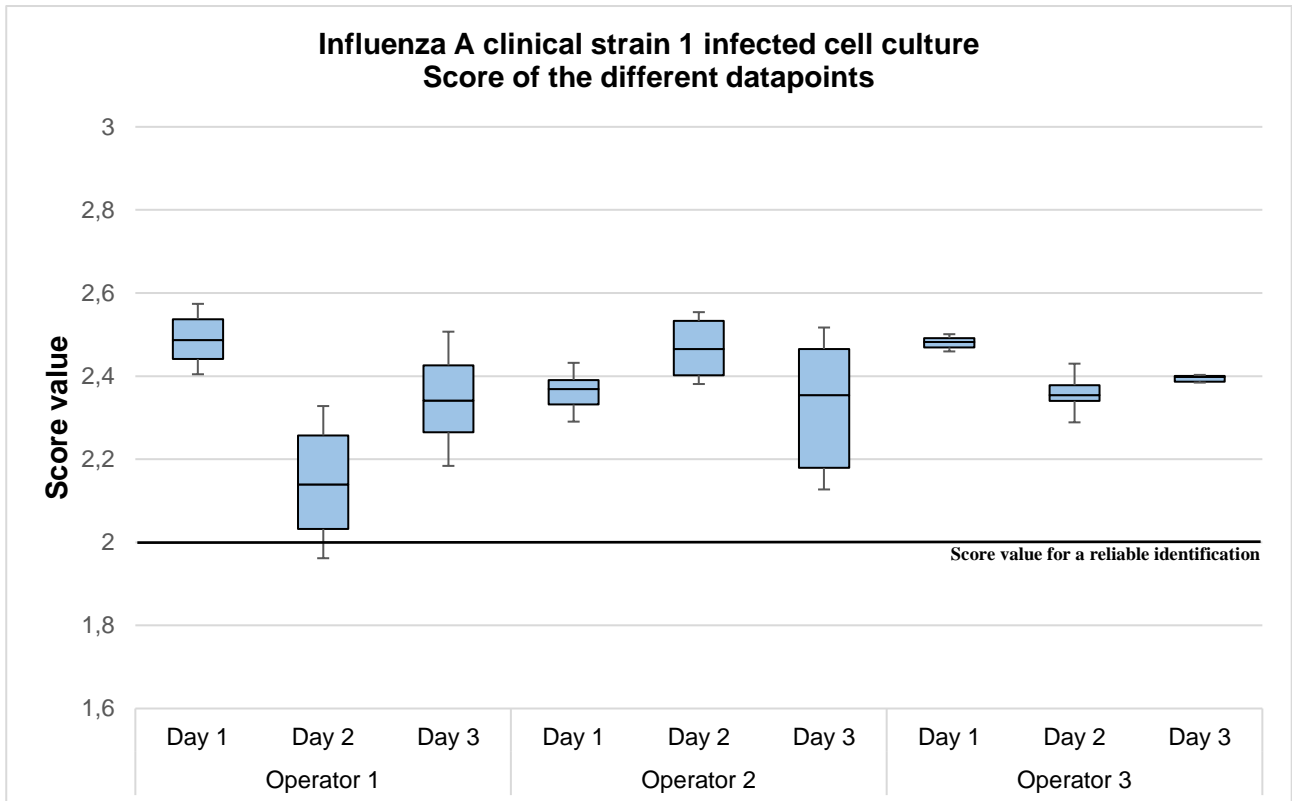
Box plot showing the distribution of score values obtained for the replicates of 2 respiratory syncytial virus (RSV) clinical strains infected cell cultures by three independent operators in three different days.

Box plot explanation: upper horizontal line of box, 75th percentile; lower horizontal line of box, 25th percentile; horizontal bar within box, median; upper horizontal bar outside box, 90th percentile; lower horizontal bar outside box, 10th percentile.



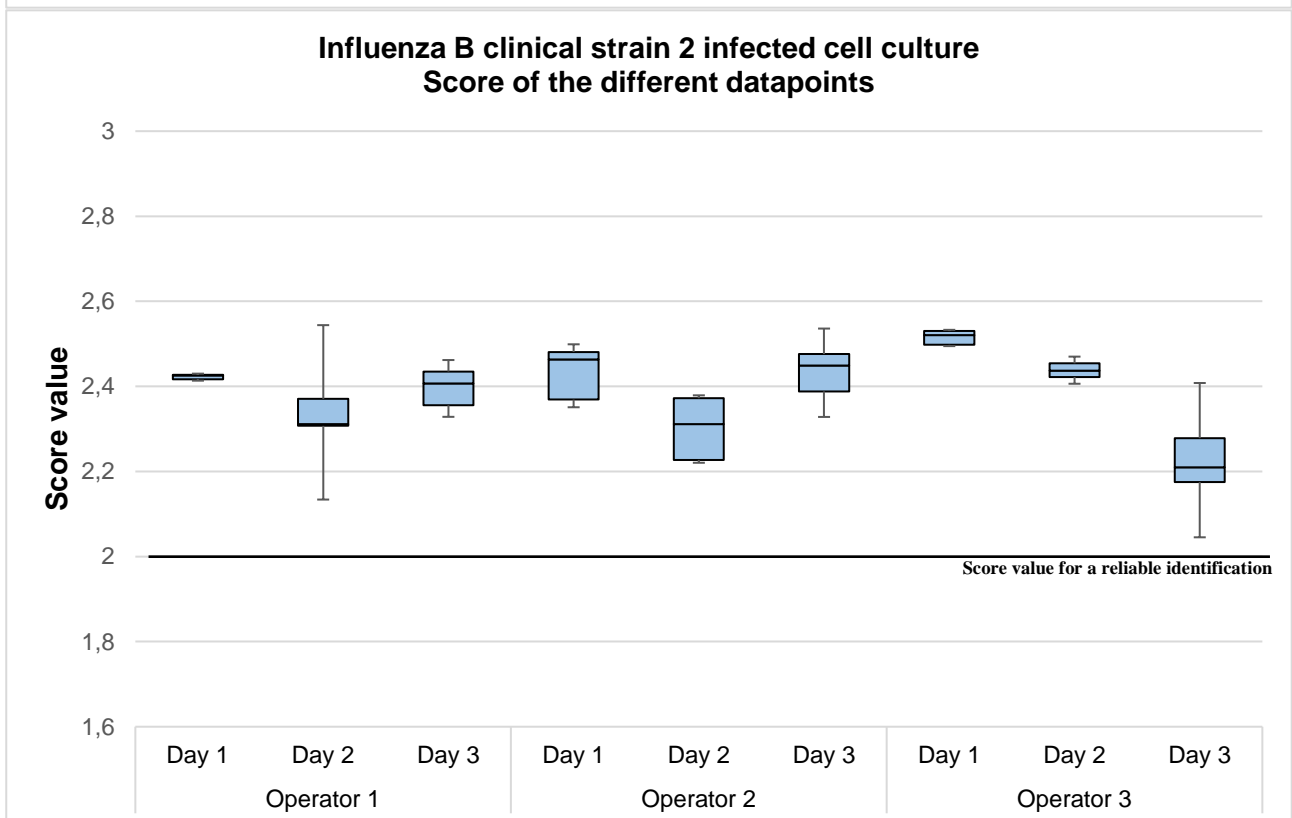
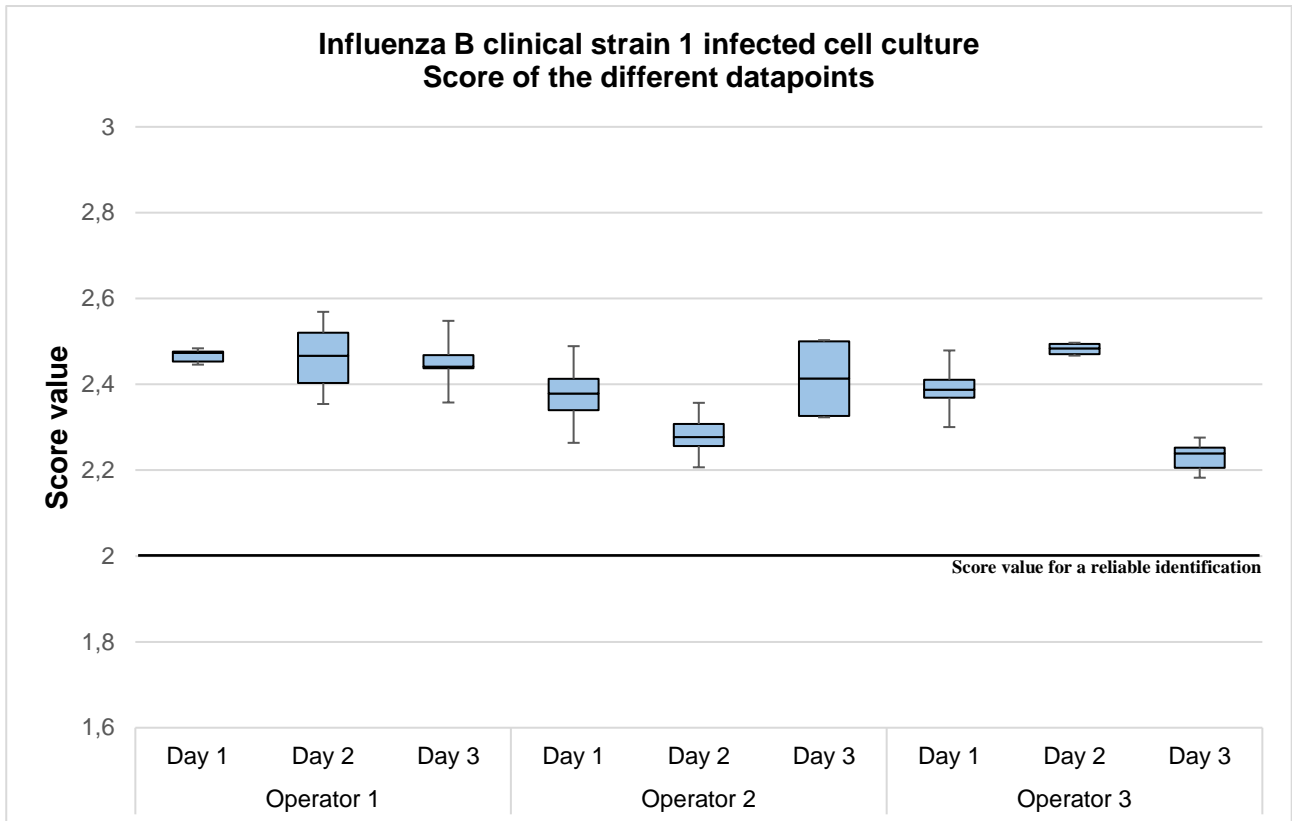
Box plot showing the distribution of score values obtained for the replicates of Adenovirus clinical strain infected cell culture by three independent operators in three different days.

Box plot explanation: upper horizontal line of box, 75th percentile; lower horizontal line of box, 25th percentile; horizontal bar within box, median; upper horizontal bar outside box, 90th percentile; lower horizontal bar outside box, 10th percentile.



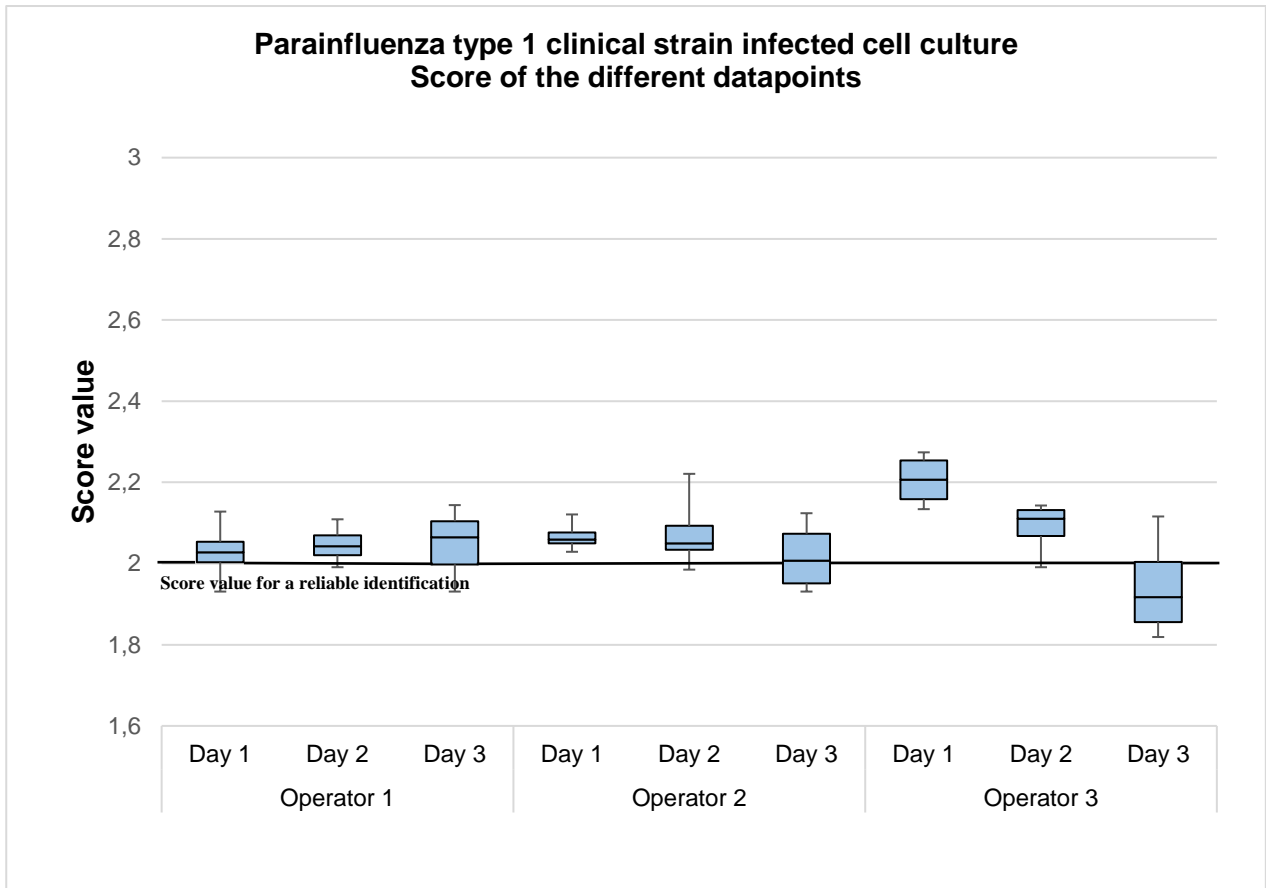
Box plot showing the distribution of score values obtained for the replicates of 2 Influenza A clinical strains infected cell cultures by three independent operators in three different days.

Box plot explanation: upper horizontal line of box, 75th percentile; lower horizontal line of box, 25th percentile; horizontal bar within box, median; upper horizontal bar outside box, 90th percentile; lower horizontal bar outside box, 10th percentile.



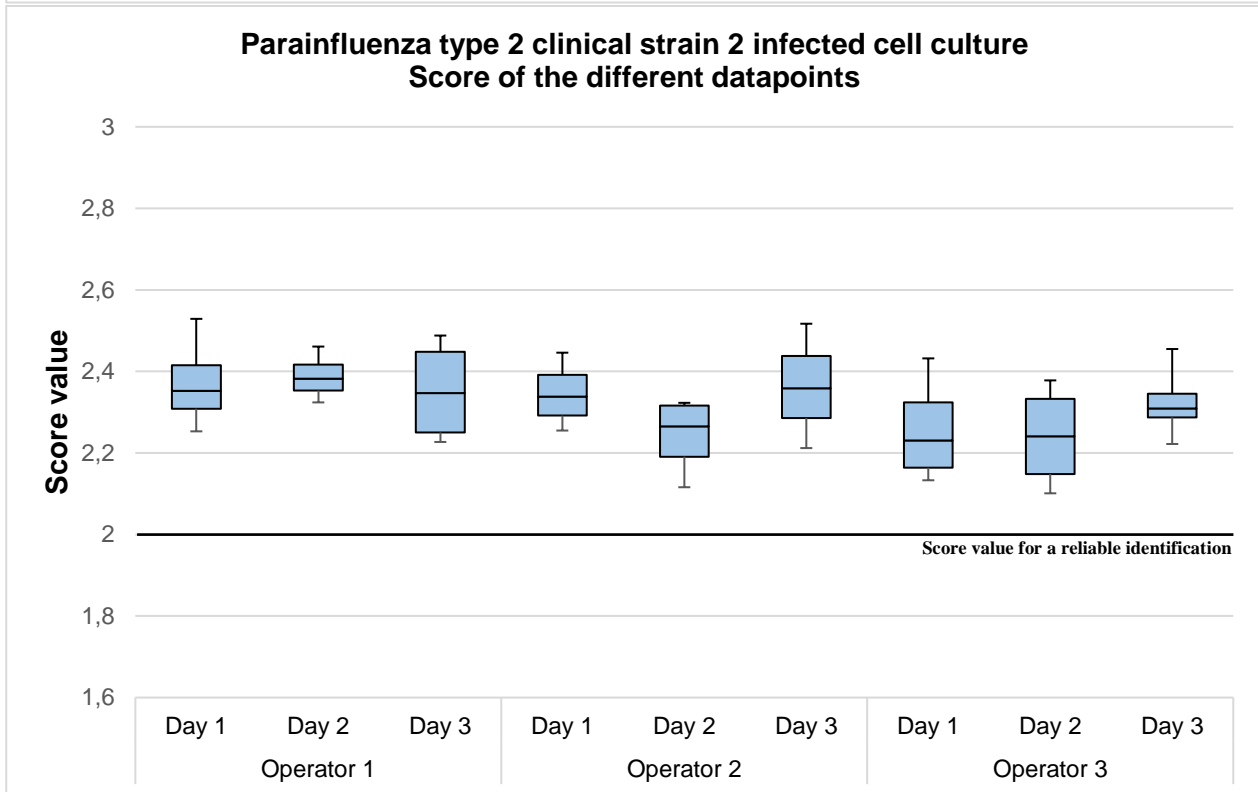
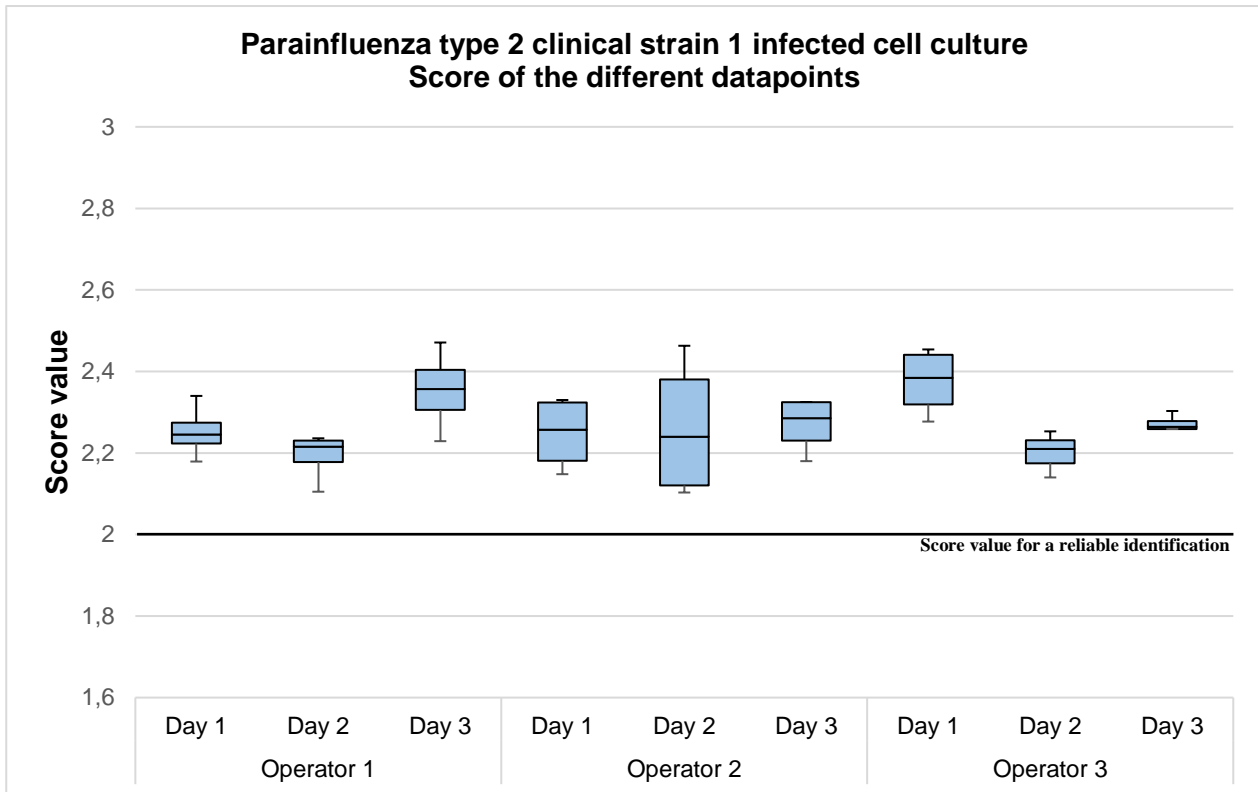
Box plot showing the distribution of score values obtained for the replicates of 2 Influenza B clinical strains infected cell cultures by three independent operators in three different days.

Box plot explanation: upper horizontal line of box, 75th percentile; lower horizontal line of box, 25th percentile; horizontal bar within box, median; upper horizontal bar outside box, 90th percentile; lower horizontal bar outside box, 10th percentile.



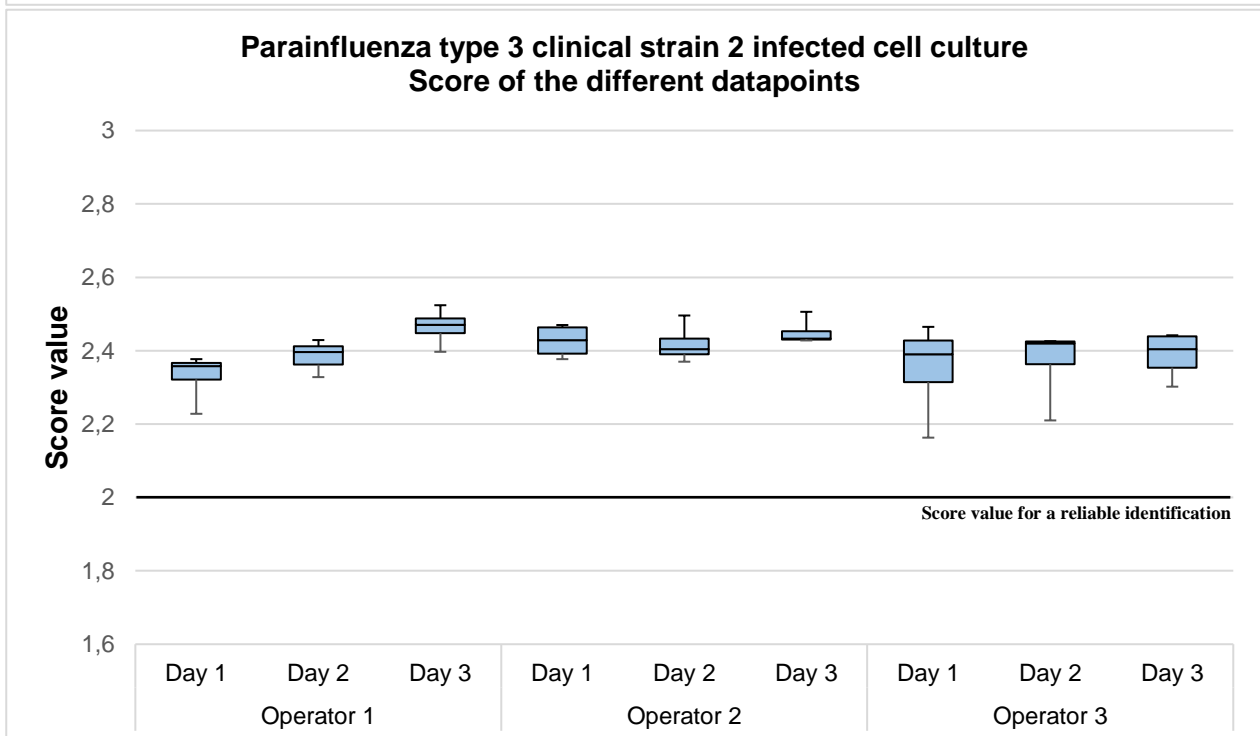
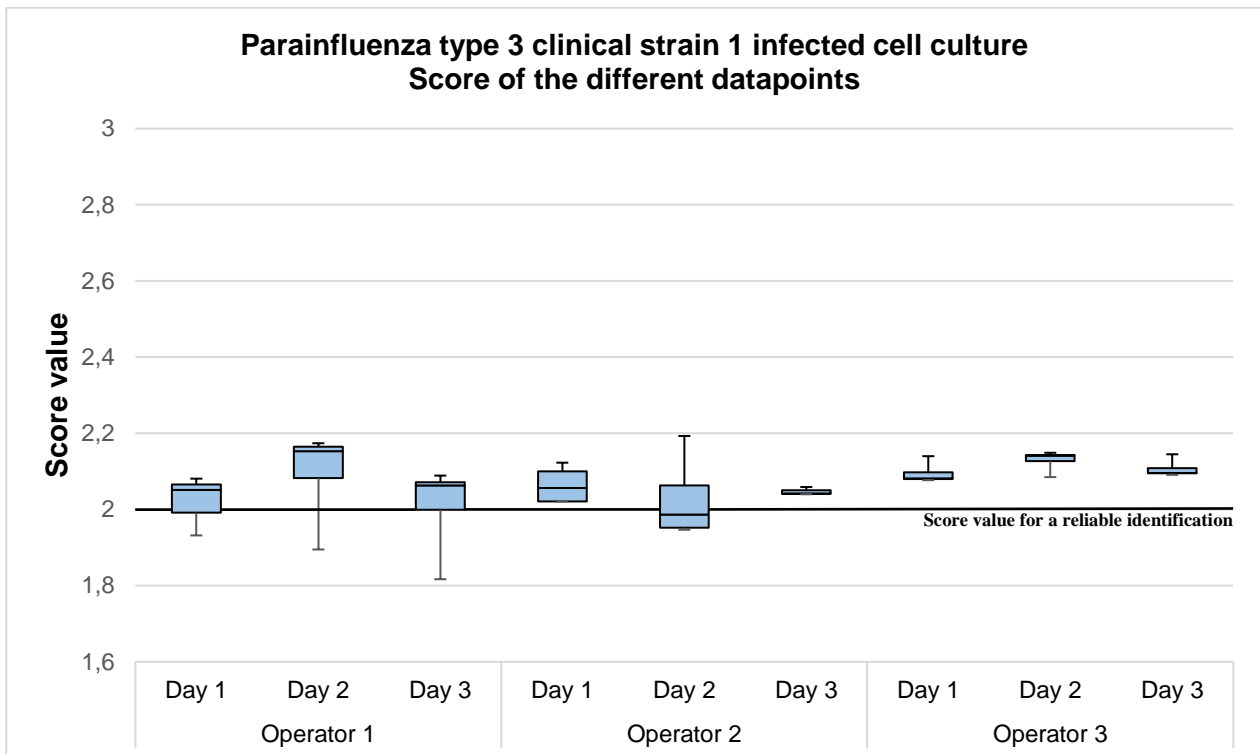
Box plot showing the distribution of score values obtained for the replicates of Parainfluenza type 1 clinical strain infected cell culture by three independent operators in three different days.

Box plot explanation: upper horizontal line of box, 75th percentile; lower horizontal line of box, 25th percentile; horizontal bar within box, median; upper horizontal bar outside box, 90th percentile; lower horizontal bar outside box, 10th percentile.



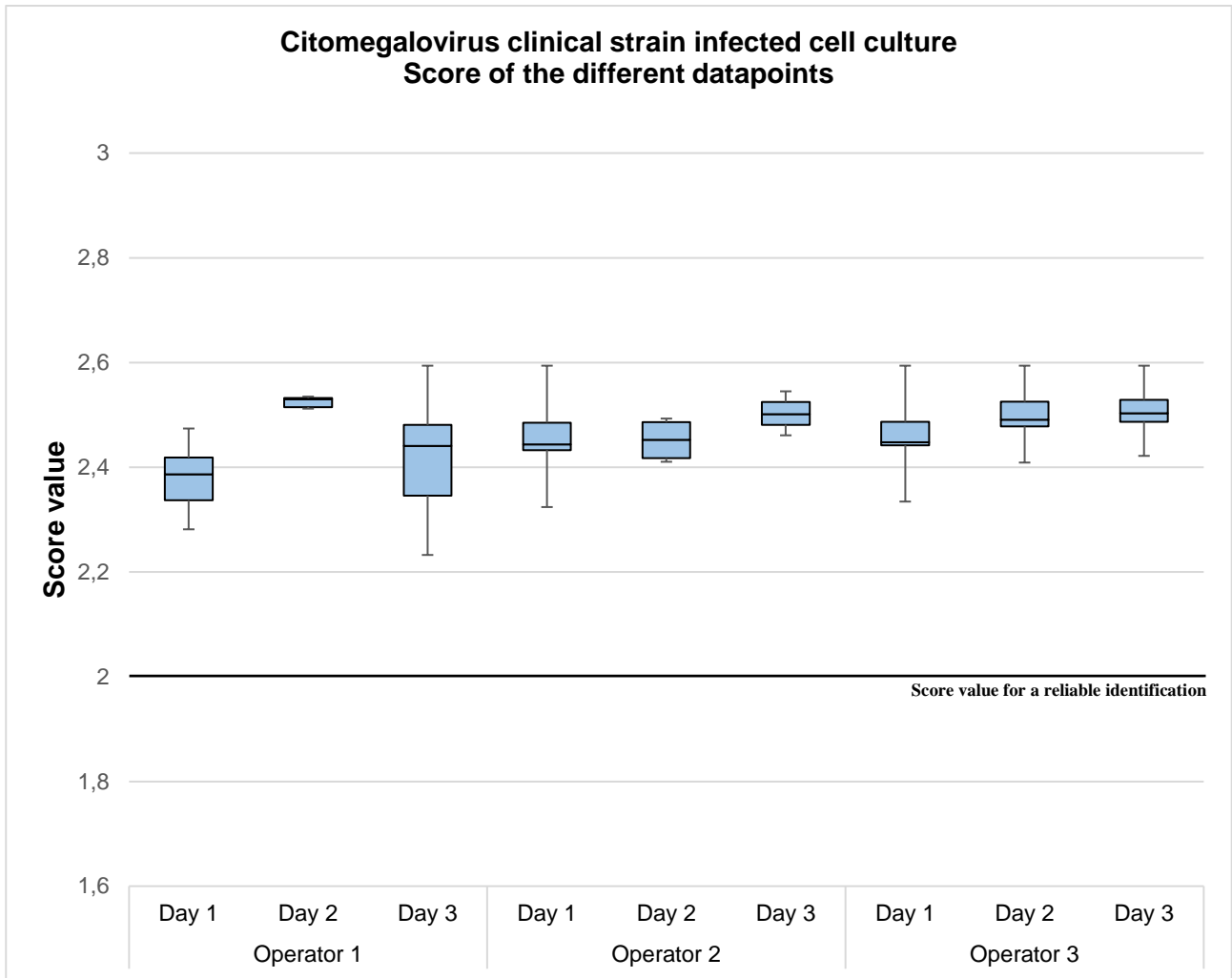
Box plot showing the distribution of score values obtained for the replicates of 2 Parainfluenza type 2 clinical strains infected cell cultures by three independent operators in three different days.

Box plot explanation: upper horizontal line of box, 75th percentile; lower horizontal line of box, 25th percentile; horizontal bar within box, median; upper horizontal bar outside box, 90th percentile; lower horizontal bar outside box, 10th percentile.



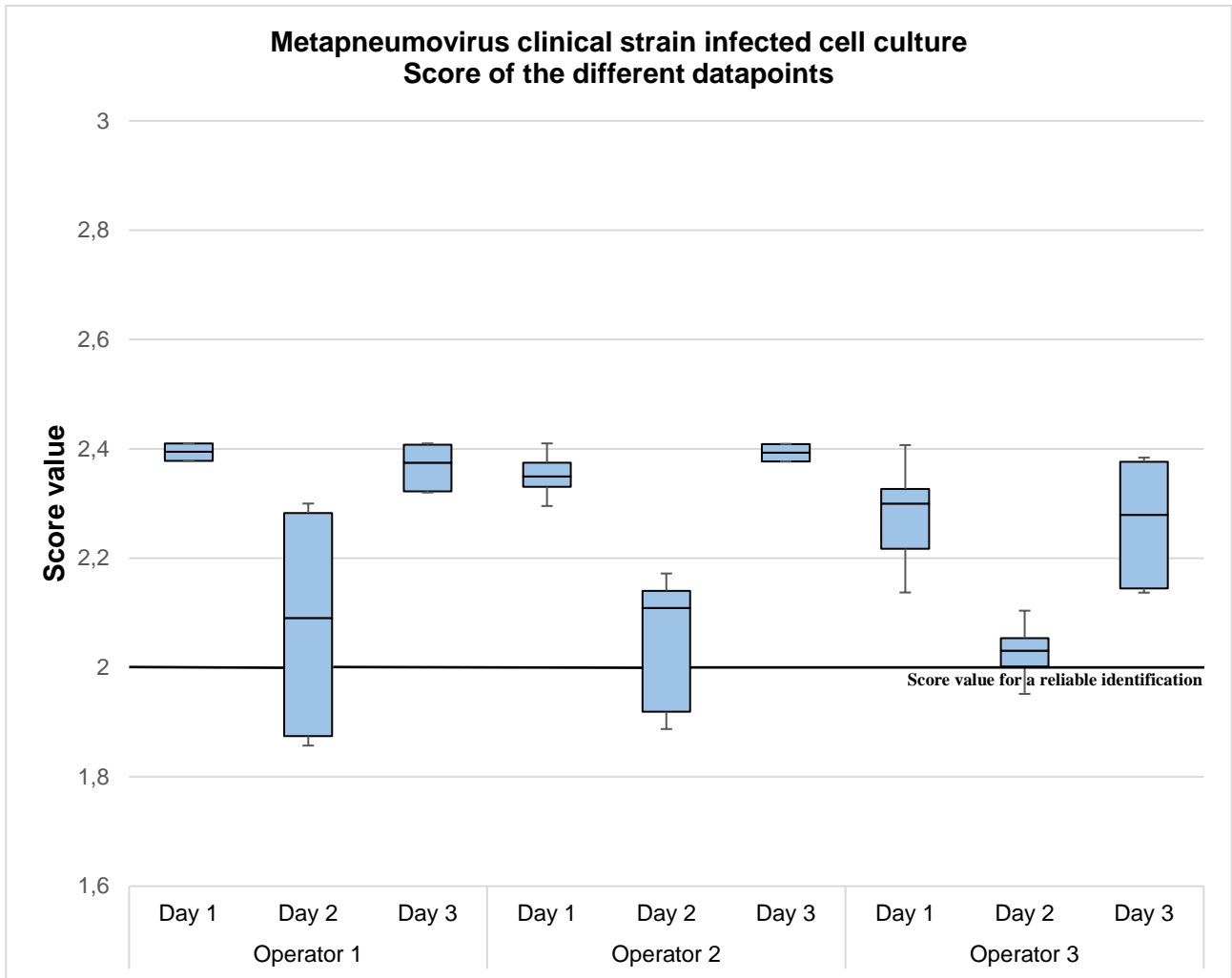
Box plot showing the distribution of score values obtained for the replicates of 2 Parainfluenza type 3 clinical strains infected cell cultures by three independent operators in three different days.

Box plot explanation: upper horizontal line of box, 75th percentile; lower horizontal line of box, 25th percentile; horizontal bar within box, median; upper horizontal bar outside box, 90th percentile; lower horizontal bar outside box, 10th percentile.



Box plot showing the distribution of score values obtained for the replicates of Citomegalovirus clinical strain infected cell culture by three independent operators in three different days.

Box plot explanation: upper horizontal line of box, 75th percentile; lower horizontal line of box, 25th percentile; horizontal bar within box, median; upper horizontal bar outside box, 90th percentile; lower horizontal bar outside box, 10th percentile.



Box plot showing the distribution of score values obtained for the replicates of metapneumovirus clinical strain infected cell culture by three independent operators in three different days.

Box plot explanation: upper horizontal line of box, 75th percentile; lower horizontal line of box, 25th percentile; horizontal bar within box, median; upper horizontal bar outside box, 90th percentile; lower horizontal bar outside box, 10th percentile.