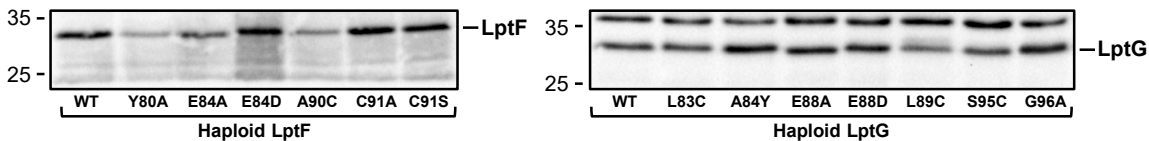
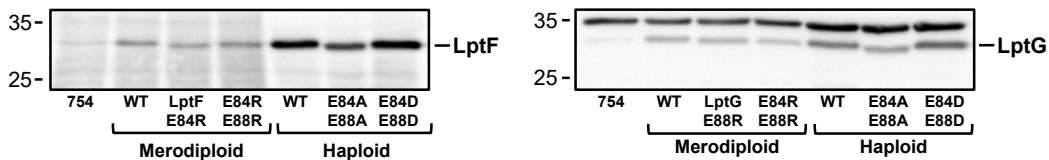


**A**

LptF 77G K L Y T E S E I T V M H A C G 92  
 LptG 81G M L A Q R S E L V V M Q A S G 96

Relevant alleles	Media	Zone of inhibition (in mm)			
		Bacitracin	Novobiocin	Erythromycin	Rifampicin
<i>lptFG</i> <sup>+</sup>	LB	<6	(8)	(13)	10(11)
<i>lptF</i> (Y80A)	LB	8	(8)	(16)	11
<i>lptF</i> (E84A)	LB	15	(8)	(18)	13(20)
<i>lptF</i> (E84D)	LB	17(22)	11(13)	10(24)	11(24)
<i>lptF</i> (A90C)	LB	8(9)	(11)	8(16)	11(12)
<i>lptF</i> (C91A)	LB	9	8(10)	10(14)	11(12)
<i>lptF</i> (C91S)	LB	9(10)	9(11)	10(14)	11(12)
<i>lptG</i> (L83C)	LB	9(11)	10	9(17)	10(14)
<i>lptG</i> (A84Y)	LB	11(16)	13	10(20)	10(15)
<i>lptG</i> (E88A)	LB	10	(14)	11(23)	11(17)
<i>lptG</i> (E88D)	LB	17(19)	17	10(27)	12(27)
<i>lptG</i> (L89C)	LB	11(19)	12	10(22)	11(16)
<i>lptG</i> (S95C)	LB	9(10)	(9)	9(16)	11(12)
<i>lptG</i> (G96A)	LB	11(23)	11	11(18)	10(15)
<i>lptFG</i> <sup>+</sup>	M63gluc	<6	(14)	(13)	10
<i>lptF</i> (E84A) <i>lptG</i> (E88A)	M63gluc	7 (11)	(14)	(20)	17 (24)
<i>lptF</i> (E84D) <i>lptG</i> (E88D)	M63gluc	13	(25)	(23)	16 (26)

**B****C****FIG S7**