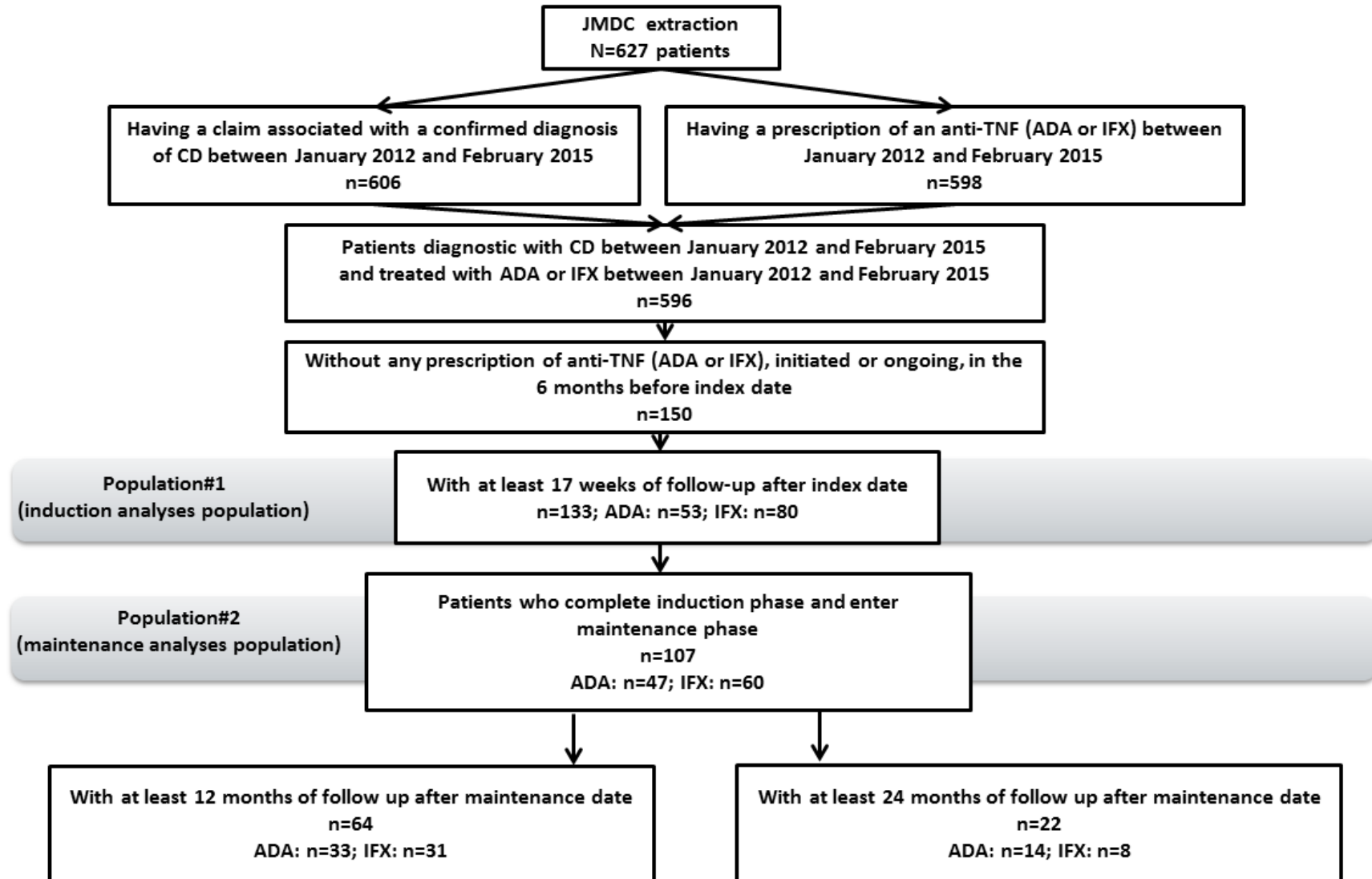


## SUPPLEMENTARY MATERIAL

Figure S 1: Patient selection flowchart



**Table S 1: Persistence over 12 and 24 months after maintenance date**

	At least 12 months of follow-up after maintenance date				At least 24 months of follow-up after maintenance date			
	IFX (n=31)	ADA (n=33)	Total (n=64)	p-value*	IFX (n=8)	ADA (n=14)	Total (n=22)	p-value*
<b>Discontinuation</b>								
<b>No</b>	26 (83.9%)	31 (93.9%)	57 (89.1%)	p = 0.25	6 (75.0%)	12 (85.7%)	18 (81.8%)	p = 0.60
<b>Yes</b>	5 (16.1%)	2 (6.1%)	7 (10.9%)		2 (25.0%)	2 (14.3%)	4 (18.2%)	
<b>Time to discontinuation** (months)</b>								
<b>Mean (Sd)</b>	6.3 (4.9)	3.5 (3.0)	5.5 (4.4)	p = 0.44	6.6 (6.1)	13.9 (11.7)	10.3 (8.7)	p = 0.44
<b>95% CI</b>	[0.3 ; 12.3]	[-23.4 ; 30.3]	[1.5 ; 9.5]		[-48.0 ; 61.3]	[-91.6 ; 119.3]	[-3.6 ; 24.1]	
<b>Min-Max</b>	[0.0 ; 10.9]	[1.3 ; 5.6]	[0.0 ; 10.9]		[2.3 ; 10.9]	[5.6 ; 22.2]	[2.3 ; 22.2]	
<b>Median</b>	8.4	3.5	5.6		6.6	13.9	8.3	
<b>Q1-Q3</b>	[2.3 ; 9.9]	[1.3 ; 5.6]	[1.3 ; 9.9]		[2.3 ; 10.9]	[5.6 ; 22.2]	[4.0 ; 16.6]	
<b>Switch</b>								
<b>No</b>	28 (90.3%)	30 (90.9%)	58 (90.6%)	p = 1.00	7 (87.5%)	9 (64.3%)	16 (72.7%)	p = 0.35
<b>Yes</b>	3 (9.7%)	3 (9.1%)	6 (9.4%)		1 (12.5%)	5 (35.7%)	6 (27.3%)	
<b>Time to switch** (months)</b>								
<b>Mean (Sd)</b>	8.3 (4.8)	9.1 (2.1)	8.7 (3.4)	p = 0.83	11.7 (--)	13.0 (6.6)	12.8 (5.9)	p = 0.77
<b>95% CI</b>	[-3.7 ; 20.3]	[3.7 ; 14.4]	[5.2 ; 12.2]		-	[4.8 ; 21.2]	[6.6 ; 19.0]	
<b>Min-Max</b>	[2.8 ; 11.7]	[6.6 ; 10.5]	[2.8 ; 11.7]		[11.7 ; 11.7]	[6.6 ; 23.8]	[6.6 ; 23.8]	
<b>Median</b>	10.5	10	10.3		11.7	10.5	11.1	
<b>Q1-Q3</b>	[2.8 ; 11.7]	[6.6 ; 10.5]	[6.6 ; 10.5]		[11.7 ; 11.7]	[10.0 ; 13.9]	[10.0 ; 13.9]	
<b>Persistence</b>								
<b>No</b>	8 (25.8%)	5 (15.2%)	13 (20.3%)	p = 0.29	3 (37.5%)	7 (50.0%)	10 (45.5%)	p = 0.67
<b>Yes</b>	23 (74.2%)	28 (84.9%)	51 (79.7%)		5 (62.5%)	7 (50.0%)	12 (54.6%)	
<b>Time to discontinuation or switch** (months)</b>								
<b>Mean (Sd)</b>	7.1 (4.6)	6.8 (3.7)	7.0 (4.1)	p = 0.77	8.3 (5.2)	13.2 (7.2)	11.7 (6.8)	p = 0.57
<b>95% CI</b>	[3.2 ; 10.9]	[2.2 ; 11.5]	[4.5 ; 9.5]		[-4.6 ; 21.2]	[6.6 ; 19.9]	[6.9 ; 16.6]	
<b>Min-Max</b>	[0.0 ; 11.7]	[1.3 ; 10.5]	[0.0 ; 11.7]		[2.3 ; 11.7]	[5.6 ; 23.8]	[2.3 ; 23.8]	
<b>Median</b>	9.1	6.6	8.4		10.9	10.5	10.7	
<b>Q1-Q3</b>	[2.6 ; 10.7]	[5.6 ; 10.0]	[2.8 ; 10.5]		[2.3 ; 11.7]	[6.6 ; 22.2]	[6.6 ; 13.9]	

\* Continuous variables were compared using the student test or the Wilcoxon test, categorical variables were compared using the chi-square test or the Fisher's exact test \*\* only patients with at least 1 event  
 ADA= adalimumab; IFX=infliximab

**Table S 2: Dose escalation over 12 and 24 months after maintenance date**

	At least 12 months of follow-up after maintenance date				At least 24 months of follow-up after maintenance date			
All patients	IFX (n=31)	ADA (n=33)	Total (n=64)	p-value*	IFX (n=8)	ADA (n=14)	Total (n=22)	p-value*
<b>Dose escalation</b>								
No	24 (77.4%)	32 (97.0%)	56 (87.5%)	p = 0.02	6 (75.0%)	12 (85.7%)	18 (81.8%)	p = 0.60
Yes	7 (22.6%)	1 (3.0%)	8 (12.5%)		2 (25.0%)	2 (14.3%)	4 (18.2%)	
<b>Time to dose escalation (months)***</b>								
Mean (Sd)	6.7 (2.4)	9.2 (--)	7.0 (2.4)	p = 0.27	11.3 (5.4)	11.2 (2.9)	11.2 (3.5)	p = 1.00
95% CI	[4.5 ; 8.9]	-	[5.0 ; 9.0]		[-36.8 ; 59.3]	[-14.6 ; 37.1]	[5.7 ; 16.8]	
Min-Max	[3.6 ; 9.8]	[9.2 ; 9.2]	[3.6 ; 9.8]		[7.5 ; 15.0]	[9.2 ; 13.3]	[7.5 ; 15.0]	
Median	7.5	9.2	7.5		11.3	11.2	11.2	
Q1-Q3	[3.7 ; 8.8]	[9.2 ; 9.2]	[4.9 ; 9.0]		[7.5 ; 15.0]	[9.2 ; 13.3]	[8.3 ; 14.2]	
Patients without immunosuppressants after the index date	IFX (n=24)	ADA (n=21)	Total (n=45)	p-value*	IFX (n=7)	ADA (n=4)	Total (n=11)	p-value*
<b>Dose escalation</b>								
No	22 (91.7%)	20 (95.2%)	42 (93.3%)	p = 1.00	6 (85.7%)	3 (75.0%)	9 (81.8%)	p = 1.00
Yes	2 (8.3%)	1 (4.8%)	3 (6.7%)		1 (14.3%)	1 (25.0%)	2 (18.2%)	
<b>Time to dose escalation (months)***</b>								
Mean (Sd)	8.7 (1.7)	9.2 (--)	8.8 (1.2)	p = 1.00	15.0 (--)	9.2 (--)	12.1 (4.1)	p = NA
95% CI	[-6.4 ; 23.7]	-	[5.8 ; 11.9]		-	-	[-24.9 ; 49.2]	
Min-Max	[7.5 ; 9.8]	[9.2 ; 9.2]	[7.5 ; 9.8]		[15.0 ; 15.0]	[9.2 ; 9.2]	[9.2 ; 15.0]	
Median	8.7	9.2	9.2		15	9.2	12.1	
Q1-Q3	[7.5 ; 9.8]	[9.2 ; 9.2]	[7.5 ; 9.8]		[15.0 ; 15.0]	[9.2 ; 9.2]	[9.2 ; 15.0]	
Patients with immunosuppressants after the index date	IFX (n=7)	ADA (n=12)	Total (n=19)	p-value*	IFX (n=1)	ADA (n=10)	Total (n=11)	p-value*
<b>Dose escalation</b>								
No	2 (28.6%)	12 (100.0%)	14 (73.7%)	p = 0.002	0	9 (90.0%)	9 (81.8%)	p = 0.18
Yes	5 (71.4%)	0	5 (26.3%)		1 (100.0%)	1 (10.0%)	2 (18.2%)	
<b>Time to dose escalation (months)***</b>								
Mean (Sd)	5.9 (2.3)	-	5.9 (2.3)	p = 0.04	7.5 (--)	13.3 (--)	10.4 (4.1)	p = NA
95% CI	[3.1 ; 8.8]	-	[3.1 ; 8.8]		-	-	[-26.5 ; 47.2]	
Min-Max	[3.6 ; 8.8]	-	[3.6 ; 8.8]		[7.5 ; 7.5]	[13.3 ; 13.3]	[7.5 ; 13.3]	
Median	6.1	-	6.1		7.5	13.3	10.4	
Q1-Q3	[3.7 ; 7.5]	-	[3.7 ; 7.5]		[7.5 ; 7.5]	[13.3 ; 13.3]	[7.5 ; 13.3]	

\* Continuous variables were compared using the student test or the Wilcoxon test, categorical variables were compared using the chi-square test or the Fisher's exact test \*\* only patients with at least 1 event; ADA= adalimumab; IFX=infliximab

**Table S 3: Exploratory outcomes over 12 and 24 months after maintenance date**

	At least 12 months of follow-up after index date				At least 24 months of follow-up after index date			
	IFX (n=49)	ADA (n=37)	Total (n=86)	p-value*	IFX (n=24)	ADA (n=16)	Total (n=40)	p-value*
<b>Surgery</b>								
<b>No</b>	42 (85.7%)	30 (81.1%)	72 (83.7%)	p = 0.56	20 (83.3%)	12 (75.0%)	32 (80.0%)	p = 0.69
<b>Yes</b>	7 (14.3%)	7 (18.9%)	14 (16.3%)		4 (16.7%)	4 (25.0%)	8 (20.0%)	
<b>Time to surgery (months)**</b>								
<b>Mean (Sd)</b>	4.0 (3.7)	4.5 (3.7)	4.2 (3.5)	p = 0.75	3.6 (3.3)	15.6 (7.5)	9.6 (8.4)	p = 0.04
<b>95% CI</b>	[0.5 ; 7.4]	[1.1 ; 7.9]	[2.2 ; 6.3]		[-1.7 ; 8.8]	[3.6 ; 27.6]	[2.6 ; 16.6]	
<b>Min-Max</b>	[0.0 ; 9.7]	[0.6 ; 10.5]	[0.0 ; 10.5]		[0.5 ; 8.2]	[7.9 ; 23.5]	[0.5 ; 23.5]	
<b>Median</b>	3.3	3	3.2		2.7	15.5	8.1	
<b>Q1-Q3</b>	[0.5 ; 8.2]	[1.4 ; 7.9]	[1.4 ; 7.9]		[1.3 ; 5.8]	[9.2 ; 22.0]	[2.7 ; 15.5]	
<b>Leukocyte removal therapy</b>								
<b>No</b>	47 (95.9%)	37 (100.0%)	84 (97.7%)	p = 0.50	24 (100.0%)	16 (100.0%)	40 (100.0%)	p = 0.88
<b>Yes</b>	2 (4.1%)	0	2 (2.3%)		0	0	0	
<b>Time to leukocyte removal therapy (months)**</b>								
<b>Mean (Sd)</b>	5.9 (8.2)	-	5.9 (8.2)	p = 0.75	-	-	-	p = NA
<b>95% CI</b>	[-68.1 ; 79.8]	-	[-68.1 ; 79.8]		-	-	-	
<b>Min-Max</b>	[0.0 ; 11.7]	-	[0.0 ; 11.7]		-	-	-	
<b>Median</b>	5.9	-	5.9		-	-	-	
<b>Q1-Q3</b>	[0.0 ; 11.7]	-	[0.0 ; 11.7]		-	-	-	
<b>Total parenteral nutrition</b>								
<b>No</b>	16 (32.7%)	19 (51.4%)	35 (40.7%)	p = 0.08	7 (29.2%)	4 (25.0%)	11 (27.5%)	p = 1.00
<b>Yes</b>	33 (67.4%)	18 (48.7%)	51 (59.3%)		17 (70.8%)	12 (75.0%)	29 (72.5%)	
<b>Time to total parenteral nutrition (months)**</b>								
<b>Mean (Sd)</b>	1.9 (3.0)	2.7 (3.6)	2.2 (3.2)	p = 0.30	4.8 (4.7)	4.9 (6.3)	4.8 (5.3)	p = 0.69
<b>95% CI</b>	[0.8 ; 2.9]	[0.9 ; 4.5]	[1.3 ; 3.1]		[2.4 ; 7.2]	[0.9 ; 8.9]	[2.8 ; 6.8]	
<b>Min-Max</b>	[0.0 ; 10.6]	[0.0 ; 9.8]	[0.0 ; 10.6]		[0.0 ; 15.0]	[0.0 ; 15.5]	[0.0 ; 15.5]	
<b>Median</b>	0	0.6	0.1		3.2	0.4	2.7	
<b>Q1-Q3</b>	[0.0 ; 2.7]	[0.0 ; 5.0]	[0.0 ; 4.1]		[0.5 ; 6.3]	[0.0 ; 9.7]	[0.0 ; 9.5]	
<b>Enteral nutrition</b>								
<b>No</b>	18 (36.7%)	13 (35.1%)	31 (36.1%)	p = 0.88	9 (37.5%)	3 (18.8%)	12 (30.0%)	p = 0.30
<b>Yes</b>	31 (63.3%)	24 (64.9%)	55 (64.0%)		15 (62.5%)	13 (81.3%)	28 (70.0%)	
<b>Time to enteral nutrition (months)**</b>								
<b>Mean (Sd)</b>	0.6 (1.6)	0.4 (1.1)	0.5 (1.4)	p = 0.41	1.9 (4.3)	4.0 (7.5)	2.9 (6.0)	p = 0.83
<b>95% CI</b>	[0.0 ; 1.2]	[-0.1 ; 0.9]	[0.1 ; 0.9]		[-0.5 ; 4.2]	[-0.5 ; 8.6]	[0.6 ; 5.2]	

	At least 12 months of follow-up after index date				At least 24 months of follow-up after index date			
	IFX (n=49)	ADA (n=37)	Total (n=86)	p-value*	IFX (n=24)	ADA (n=16)	Total (n=40)	p-value*
<b>Min-Max</b>	[0.0 ; 8.7]	[0.0 ; 5.2]	[0.0 ; 8.7]		[0.0 ; 15.0]	[0.0 ; 21.4]	[0.0 ; 21.4]	
<b>Median</b>	0.1	0.1	0.1		0.1	0.1	0.1	
<b>Q1-Q3</b>	[0.0 ; 0.5]	[0.0 ; 0.2]	[0.0 ; 0.5]		[0.0 ; 0.5]	[0.0 ; 1.0]	[0.0 ; 0.8]	
<b>Adverse events</b>								
<b>No</b>	15 (30.6%)	18 (48.7%)	33 (38.4%)	0.09	7 (29.2%)	4 (25.0%)	11 (27.5%)	p = 1.00
<b>Yes</b>	34 (69.4%)	19 (51.4%)	53 (61.6%)		17 (70.8%)	12 (75.0%)	29 (72.5%)	
<b>Time to adverse events (months)**</b>								
<b>Mean (Sd)</b>	2.5 (2.7)	3.1 (3.2)	2.7 (2.9)	0.82	4.0 (5.4)	6.3 (7.8)	5.0 (6.5)	p = 0.84
<b>95% CI</b>	[1.5 ; 3.4]	[1.5 ; 4.6]	[1.9 ; 3.5]		[1.2 ; 6.8]	[1.4 ; 11.3]	[2.5 ; 7.4]	
<b>Min-Max</b>	[0.1 ; 11.3]	[0.1 ; 11.0]	[0.1 ; 11.3]		[0.1 ; 19.7]	[0.1 ; 23.4]	[0.1 ; 23.4]	
<b>Median</b>	1.5	2.4	1.9		1.6	3.3	2.1	
<b>Q1-Q3</b>	[0.6 ; 2.9]	[0.3 ; 5.6]	[0.5 ; 3.8]		[0.6 ; 4.9]	[0.4 ; 10.2]	[0.5 ; 6.9]	

\* Continuous variables were compared using the student test or the Wilcoxon test, categorical variables were compared using the chi-square test or the Fisher's exact test \*\* only patients with at least 1 event; ADA= adalimumab; IFX=infliximab

**Table S 4: Patient clinical characteristics in the pre-index period (3 months before the index date)**

	IFX (n=80)	ADA (n=53)	Total (n=133)	p-value *
<b>Hospitalisations, n (%)</b>	44 ( 55.0%)	31 ( 58.5%)	75 ( 56.4%)	p = 0.69
<b>Length of hospitalizations (days), mean (SD)</b>	11.0 (6.3)	11.2 (6.1)	11.1 (6.2)	p = 0.78
<b>Surgical procedures, n (%)</b>	14 ( 17.5%)	9 ( 17.0%)	23 ( 17.3%)	p = 0.94
<b>Complication (fistulas or obstructions) , n(%)</b>	27 ( 33.8%)	17 ( 32.1%)	44 ( 33.1%)	p = 0.84

\* Continuous variables were compared using the student test or the Wilcoxon test, categorical variables were compared using the chi-square test or the Fisher's exact test; ADA= adalimumab; IFX=infliximab

Figure S 2: Kaplan Meier plot of time to switch or discontinuation ADA or IFX group (base-case)

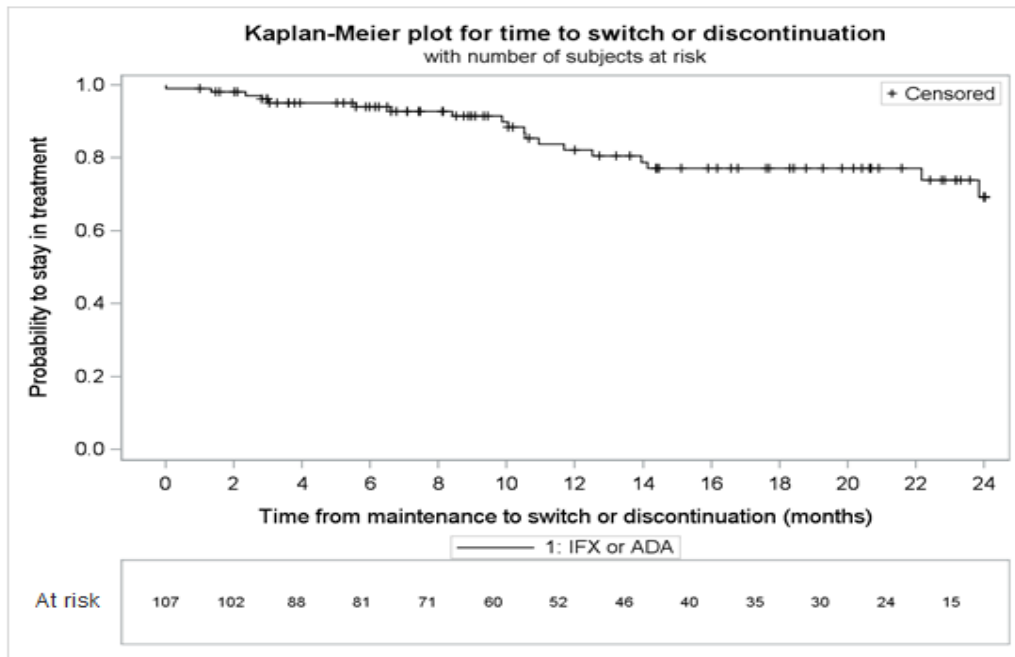


Figure S 3: Kaplan Meier plot of time to switch or discontinuation for Sensitivity Analysis (study time window -7days)

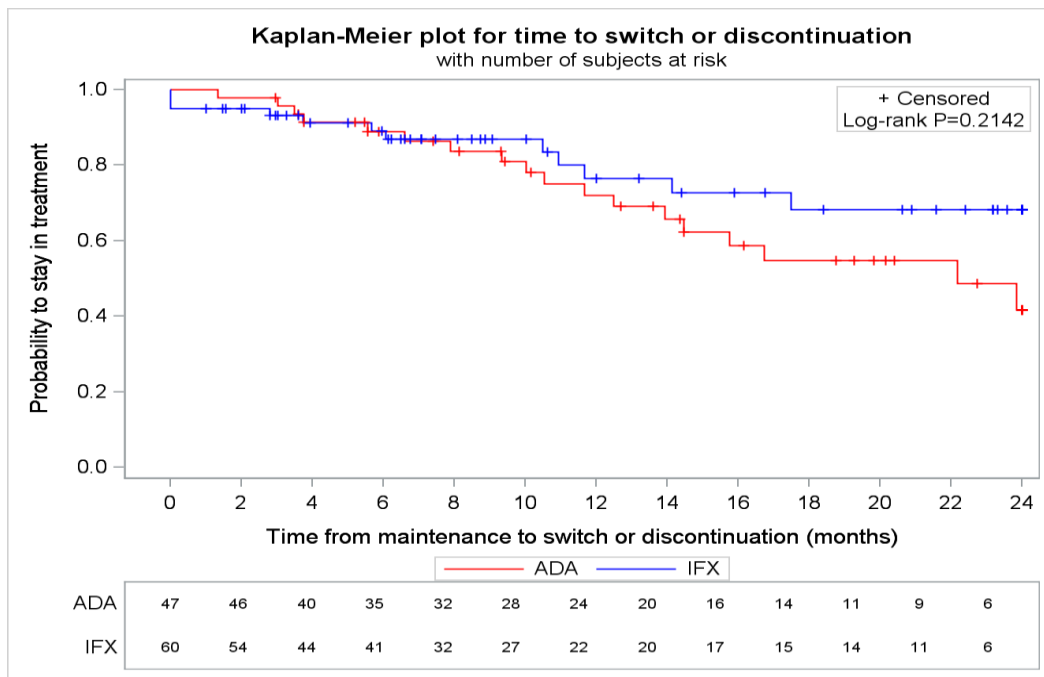


Figure S 4: Kaplan Meier plot of time to switch or discontinuation for sensitivity analysis (study time window +7days)

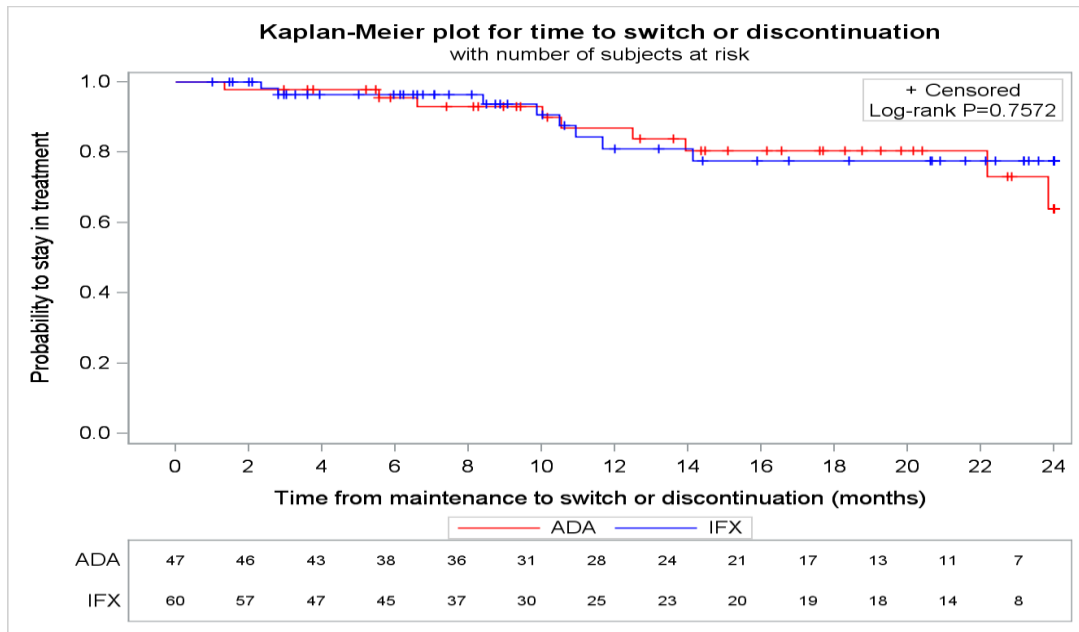


Figure S 5: Kaplan Meier plot of time to dose escalation (ADA)

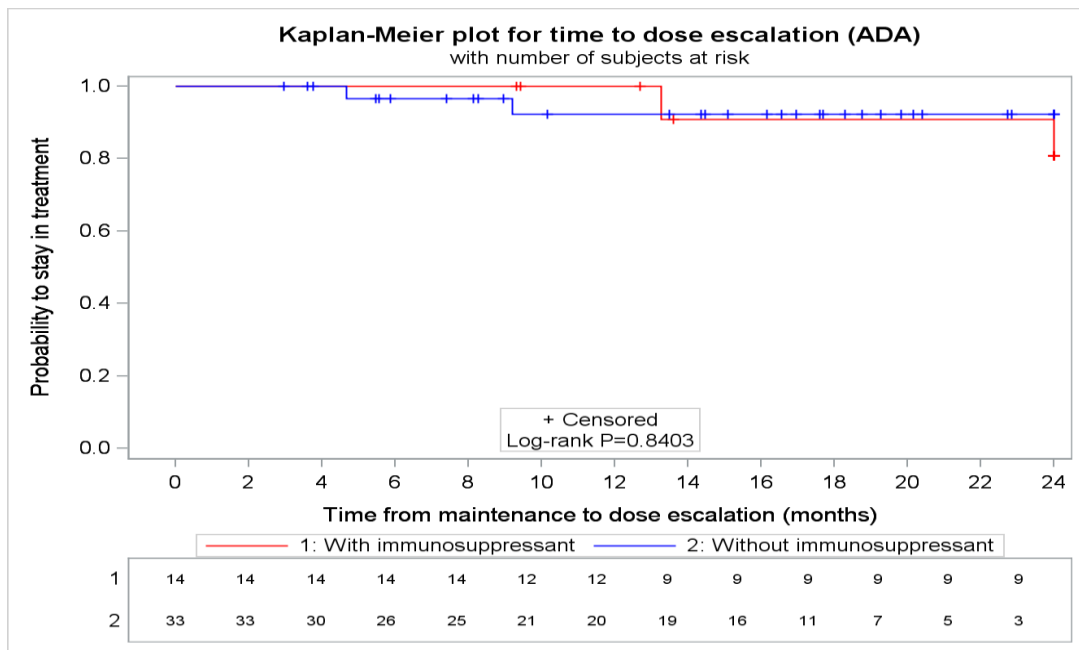


Figure S 6: Kaplan Meier plot of time to dose escalation (IFX)

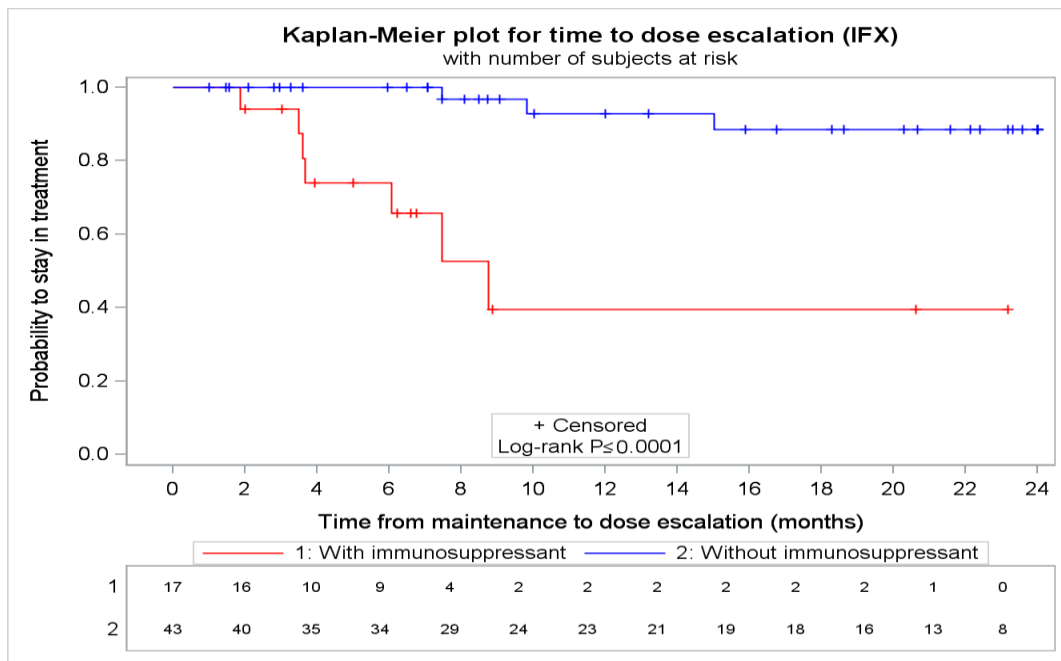
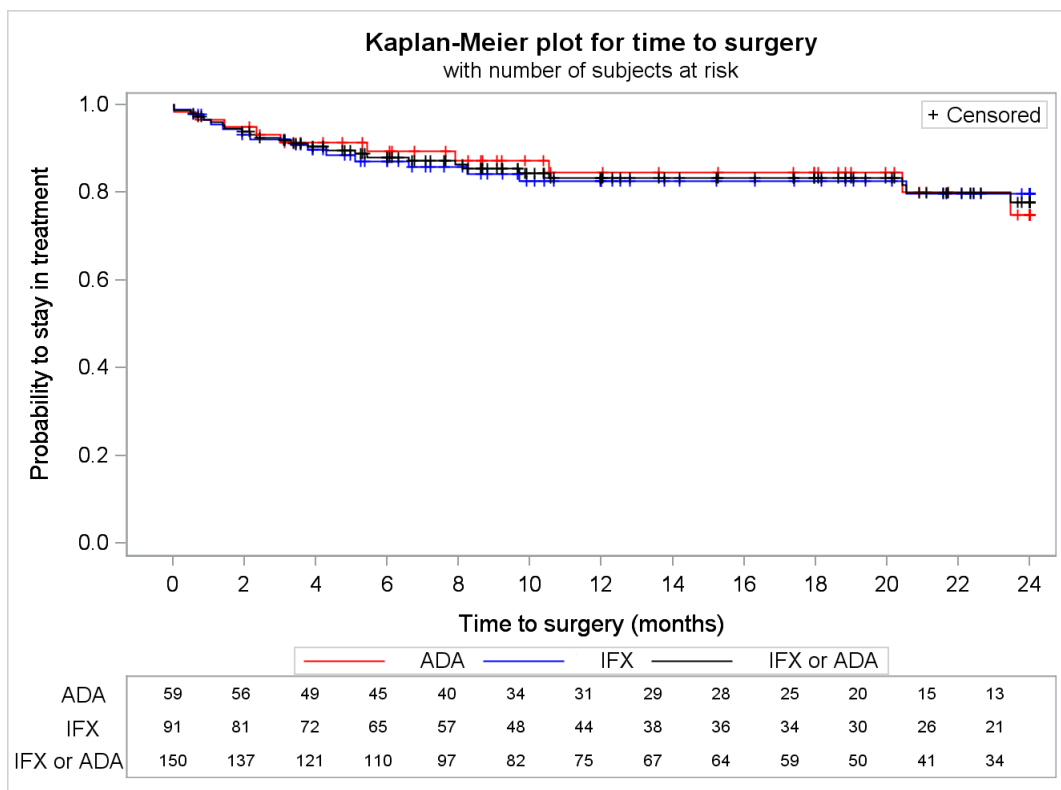


Figure S 7: Kaplan Meier plot of time to surgery



(Log-rank p-value of ADA vs. IFX =0.97)



Figure S 8: Kaplan Meier plot of time to leukocyte removal therapy

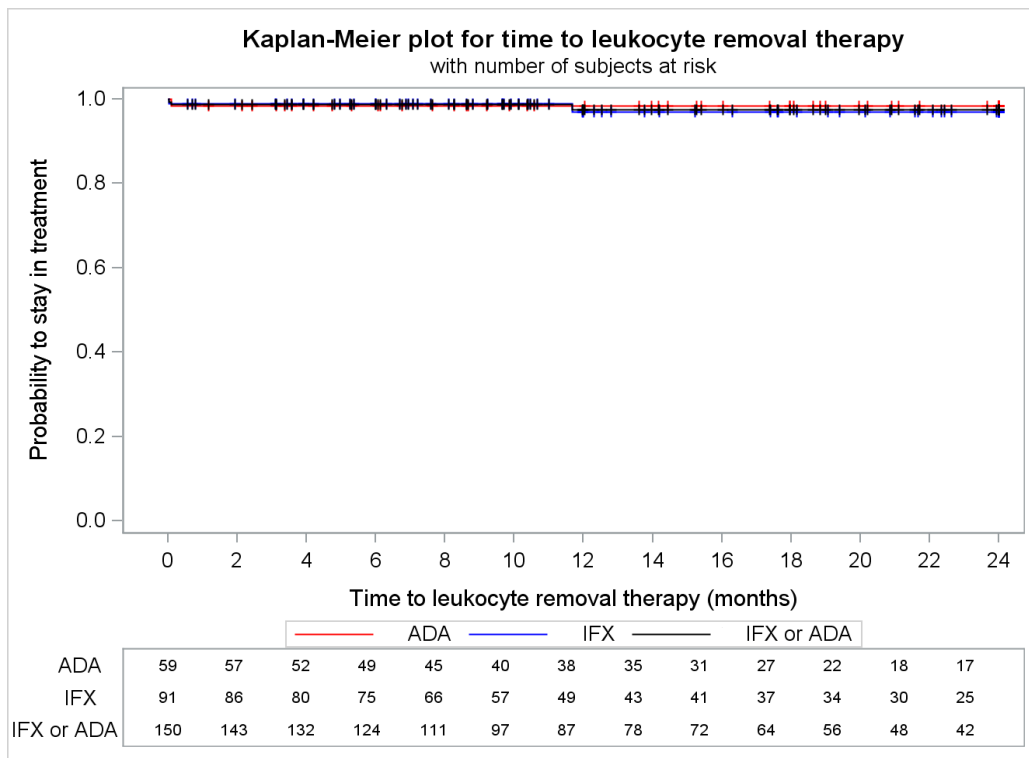
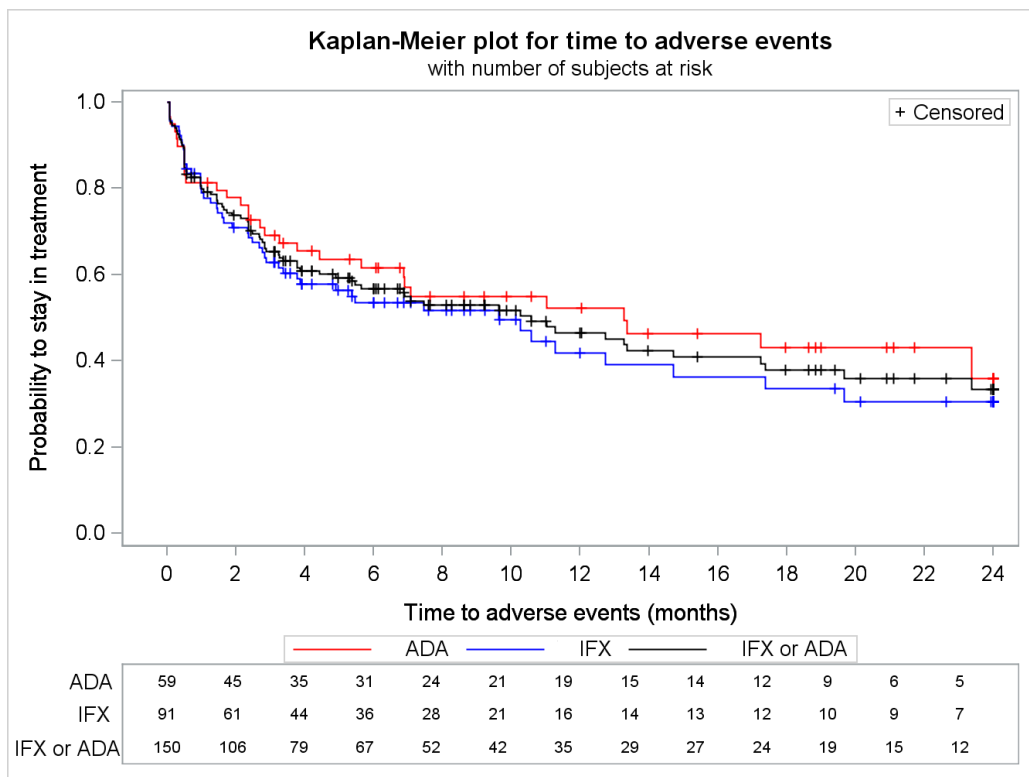


Figure S 9: Kaplan Meier plot of time to adverse events



**Figure S 10: Missing ADA and IFX prescriptions dates' imputation algorithm:**

- If previous and following prescriptions dates were available, then:
  - If the midpoint between the previous and next prescription dates occurs during the month of the current prescription, then missing prescription date will be imputed by the midpoint of the dates
  - Else (i.e. the midpoint between the previous and following prescription does not correspond to the month of current prescription) the 15th of the month provided in the database will be used
- If the next prescription date only is available, then missing date will be calculated as the difference between next date and the interval defined in the package insert (56 days for IFX/ number of syringes prescribed \* 14 days for ADA)
  - but if the calculated month was different from the month provided in the database, then
    - if the next prescription is not in the same month as current prescription, then the 15th of the month provided in the database will be used
    - If the next prescription occurs in the same month as current prescription, then it will be assumed that the current prescription occurs on the first of the month
- If the previous prescription is only available, then missing date will be calculated as the sum of previous date and the interval defined in the package insert (56 days for IFX/ number of syringes prescribed \* 14 days for ADA)
  - but if the calculated month was different from the month provided in the database, then
    - if the previous prescription was not in the same month as current prescription, the 15th of the month provided in the database will be used
    - If the previous prescription occurs in the same month as current prescription, it will be assumed that current prescription occurs on the last day of the month
- If no date was available for the patient then the 15<sup>th</sup> of the month will be used.

**Table S 5: List of drug ATC codes**

	ATC code	Name
Treatments of interest	L04AB04	Adalimumab
	L04AB02	Infliximab
Immunosuppressants	L04AX01	Azathioprine
	L01BB02	Mercaptopurine
	L04AD01	Ciclosporin
	L04AD02	Tacrolimus
	L01BA01	Methotrexate
	L04AX03	Methotrexate (oral)
Immunostimulants	<b>L03</b>	Immunostimulants
	<b>J07AE02</b>	Cholera vaccines
	<b>J07AN01</b>	Tuberculosis vaccines
	<b>J07AP01</b>	Typhoid vaccines
	<b>J07BA03</b>	Encephalitis vaccines
	<b>J07BB03</b>	Influenza vaccines
	<b>J07BD</b>	Measles vaccines
	<b>J07BE01</b>	Mumps vaccines
	<b>J07BF</b>	Poliomyelitis vaccines
	<b>J07BH</b>	Rota virus diarrhea vaccines
	<b>J07BJ</b>	Rubella vaccines
	<b>J07BK</b>	Varicella zoster vaccines
	<b>J07BL</b>	Yellow fever vaccines
	Enteral nutrition	<b>V06DB</b>
<b>V06DX</b>		Other combinations of nutrients

**Table S 6: List of adverse events codes**

	ICD-10 code	Name
Infections	A00-A09	Intestinal infectious diseases
	A15-A19	Tuberculosis
	A20-A28	Certain zoonotic bacterial diseases
	A30-A49	Other bacterial diseases
	A50-A64	Infections with a predominantly sexual mode of transmission
	A65-A69	Other spirochaetal diseases
	A70-A74	Other diseases caused by chlamydiae
	A75-A79	Rickettsioses
	A80-A89	Viral infections of the central nervous system
	A92-A99	Arthropod-borne viral fevers and viral haemorrhagic fevers
	B00-B09	Viral infections characterized by skin and mucous membrane lesions
	B15-B19	Viral hepatitis
	B20-B24	Human immunodeficiency virus [HIV] disease
	B25-B34	Other viral diseases
	B35-B49	Mycoses
	B50-B64	Protozoal diseases
	B65-B83	Helminthiases
	B85-B89	Pediculosis, acariasis and other infestations
	B90-B94	Sequelae of infectious and parasitic diseases
	B95-B98	Bacterial, viral and other infectious agents
B99-B99	Other infectious diseases	
Other adverse events	C00-D48	Neoplasms
	D50-D89	Diseases of the blood and blood-forming organs and certain disorders involving the immune mechanism
	E00-E90	Endocrine, nutritional and metabolic diseases
	J00-J99	Diseases of the respiratory system
	K00-K93	Diseases of the digestive system
	L00-L99	Diseases of the skin and subcutaneous tissue
	M00-M99	Diseases of the musculoskeletal system and connective tissue
	N00-N99	Diseases of the genitourinary system
	R00-R99	Symptoms, signs and abnormal clinical and laboratory findings
	S00-T98	Injury, poisoning

**Table S 7: List of surgery codes**

Procedure ID	Procedure name	診療行為名
150160110	surgery for regional peritoneal cancer (subphrenic abscess)	限局性腹腔膿瘍手術（横隔膜下膿瘍）
150160210	surgery for regional peritoneal cancer (Douglas' abscess)	限局性腹腔膿瘍手術（ダグラス窩膿瘍）
150160310	surgery for regional peritoneal cancer (periappendiceal abscess)	限局性腹腔膿瘍手術（虫垂周囲膿瘍）
150160410	surgery for regional peritoneal cancer (other)	限局性腹腔膿瘍手術（その他）
150160610	incision and drainage of pelvic retroperitoneal abscess	骨盤腹膜外膿瘍切開排膿術
150160810	surgery for acute generalized peritonitis	急性汎発性腹膜炎手術
150164850	endoscopic gastrointestinal bleeding	内視鏡的消化管止血術
150171610	gastrostomy (including percutaneous endoscopic gastrostomy and/or laparoscopic gastrostomy)	胃瘻造設術（経皮的内視鏡下胃瘻造設術、腹腔鏡下胃瘻造設術を含む）
150172110	cholangiotomy	胆管切開術
150172210	cholecystolithotomy	胆嚢切開結石摘出術
150296610	cholangiolithotomy (including cholecystectomy)	胆管切開結石摘出術（胆嚢摘出を含む）
150172310	cholangiolithotomy (excluding cholecystectomy)	胆管切開結石摘出術（胆嚢摘出を含まない）
150276810	laparoscopic cholangiolithotomy (including cholecystectomy)	腹腔鏡下胆管切開結石摘出術（胆嚢摘出を含む）
150276910	laparoscopic cholangiolithotomy (excluding cholecystectomy)	腹腔鏡下胆管切開結石摘出術（胆嚢摘出を含まない）
150172410	cholecystectomy	胆嚢摘出術
150254110	laparoscopic cholecystectomy	腹腔鏡下胆嚢摘出術
150174110	external cholecystostomy	胆嚢外瘻造設術
150174210	external cholecystostomy (laparotomy)	胆管外瘻造設術（開腹）
150174310	external cholecystostomy (percutaneous transhepatic)	胆管外瘻造設術（経皮経肝）
150174550	percutaneous transhepatic cholangiodrainage	経皮的胆管ドレナージ術
150174910	endoscopic bile duct stone removal (with choledochotomy)	内視鏡的胆道結石除去術（胆道碎石術を伴うもの）

Procedure ID	Procedure name	診療行為名
150362510	endoscopic bile duct stone removal (other)	内視鏡的胆道結石除去術（その他）
150175310	endoscopic biliary dilatation	内視鏡的胆道拡張術
150341450	endoscopic papillary dilatation	内視鏡的乳頭拡張術
150175410	endoscopic papillary dilatation (sphincterotomy only)	内視鏡的乳頭切開術（乳頭括約筋切開のみ）
150296710	endoscopic papillary dilatation (with cholelithotripsy)	内視鏡的乳頭切開術（胆道碎石術を伴う）
150254410	endoscopic biliary stenting	内視鏡的胆道ステント留置術
150263810	endoscopic biliary stent placement	経皮経肝胆管ステント挿入術
150180010	suture of ruptured intestine	破裂腸管縫合術
150180110	enterotomy	腸切開術
150180210	surgery for intestinal adhesion	腸管癒着症手術
150180350	surgery of ileus (surgery for intestinal adhesion)	腸閉塞症手術（腸管癒着症手術）
150271550	laparoscopic intestinal adhesiolysis	腹腔鏡下腸管癒着剥離術
150271950	laparoscopic small bowel resection (resection except surgery for malignancy)	腹腔鏡下小腸切除術（悪性腫瘍手術以外の切除術）
150363710	laparoscopic small bowel resection (surgery for malignancy)	腹腔鏡下小腸切除術（悪性腫瘍手術）
150181310	extirpation of tumor and/or diverticulum of small bowel (including surgery for Meckel's diverticulitis)	小腸腫瘍、小腸憩室摘出術（メッケル憩室炎手術を含む）
150180750	surgery of ileus (colectomy) (resection of the small part)	腸閉塞症手術（結腸切除術）（小範囲切除）
150180850	surgery of ileus (colectomy) (hemicolectomy)	腸閉塞症手術（結腸切除術）（結腸半側切除）
150180950	surgery of ileus (colectomy) (resection of total or most parts, or surgery for malignancy)	腸閉塞症手術（結腸切除術）（全切除、亜全切除又は悪性腫瘍手術）
150181710	colectomy (resection of the small part)	結腸切除術（小範囲切除）
150181810	colectomy (hemicolectomy)	結腸切除術（結腸半側切除）
150181910	colectomy (resection of total or most parts, or surgery for malignancy)	結腸切除術（全切除、亜全切除又は悪性腫瘍手術）
150277810	laparoscopic colectomy (resection of the small part, hemicolectomy)	腹腔鏡下結腸切除術（小範囲切除、結腸半側切除）

Procedure ID	Procedure name	診療行為名
150337710	laparoscopic colectomy (resection of total or most parts)	腹腔鏡下結腸切除術（全切除、垂全切除）
150324910	laparoscopic colectomy for cancer	腹腔鏡下結腸悪性腫瘍切除術
150183110	extirpation of colon tumor (including extirpation of ileocecal tumor)	結腸腫瘍摘出術（回盲部腫瘍摘出術を含む）
150285010	endoscopic colon polyp/mucous membrane removal (< 2 cm in diameter)	内視鏡的結腸ポリープ・粘膜切除術（長径 2 cm未満）
150183410	endoscopic colon polyp/mucous membrane removal (>= 2 cm in diameter)	内視鏡的結腸ポリープ・粘膜切除術（長径 2 cm以上）
150263950	endoscopic hemostasis of small bowel and colon	小腸結腸内視鏡的止血術
150184110	enteroenterostomy	腸吻合術
150184310	enterostomy	腸瘻造設術
150184510	Colostomy	人工肛門造設術
150184710	incision and suture of enterostenosis	腸狭窄部切開縫合術
150185610	colostomy closure (without intestinal resection)	人工肛門閉鎖術（腸管切除を伴わない）
150293310	stenosis dilatation of small bowel and colon	小腸・結腸狭窄部拡張術（内視鏡）
150186510	incision for perirectal abscess	直腸周囲膿瘍切開術
150187010	extirpation of rectal cancer (transperitoneal and transanal)	直腸腫瘍摘出術（経腹及び経肛）
150186910	extirpation of rectal cancer (sphincteric)	直腸腫瘍摘出術（経括約筋）
150187110	rectal resection/amputation (resection)	直腸切除・切断術（切除術）
150245410	rectal resection/amputation (low anterior resection)	直腸切除・切断術（低位前方切除術）
150297510	rectal resection/amputation (super-low anterior resection) (transanal colonic pouch-anal anastomosis)	直腸切除・切断術（超低位前方切除術）（経肛門的結腸嚢肛門吻合）
150187210	rectal resection/amputation (amputation)	直腸切除・切断術（切断術）
150325210	laparoscopic rectal resection/amputation (resection)	腹腔鏡下直腸切除・切断術（切除術）
150337810	laparoscopic rectal resection/amputation (low anterior resection)	腹腔鏡下直腸切除・切断術（低位前方切除術）
150337910	laparoscopic rectal resection/amputation	腹腔鏡下直腸切除・切断術（切断術）

Procedure ID	Procedure name	診療行為名
	(amputation)	
150187510	proctoplasty for stenosis	直腸狭窄形成手術
150189350	Milligan-Morgan haemorrhoidectomy	ミリガン・モーガン手術
150189450	Whitehead's operation	ホワイトヘッド手術
150341650	hemorrhoid surgery (use of automatic anastomotic devices)	痔核手術（自動吻合器使用）
150188210	hemorrhoid surgery (including anal prolapse) (sclerotherapy)	痔核手術（脱肛を含む）（硬化療法）
150325410	hemorrhoid surgery (including anal prolapse) (sclerotherapy (four-step injection method))	痔核手術（脱肛を含む）（硬化療法（四段階注射法））
150188310	hemorrhoid surgery (including anal prolapse) (open hemorrhoidectomy)	痔核手術（脱肛を含む）（結紮術）
150188410	hemorrhoid surgery (including anal prolapse) (cauterization)	痔核手術（脱肛を含む）（焼灼術）
150188510	hemorrhoid surgery (including anal prolapse) (thrombectomy)	痔核手術（脱肛を含む）（血栓摘出術）
150188610	hemorrhoid surgery (including anal prolapse) (radical surgery)	痔核手術（脱肛を含む）（根治手術）
150338010	hemorrhoid surgery (PPH)	痔核手術（PPH）
150188750	incision of anal sphincter	肛門括約筋切開術
150189610	radical surgery for anal fissure	裂肛根治手術
150189810	incision of perirectal abscess	肛門周囲膿瘍切開術
150189910	radical surgery for anal fistula (simple)	痔瘻根治手術（単純）
150190010	radical surgery for anal fistula (complicated)	痔瘻根治手術（複雑）
150190150	surgery for high rectal fistula	高位直腸瘻手術
150190310	anal polypectomy	肛門ポリープ切除術
150190710	surgery for anal cancer (resection)	肛門悪性腫瘍手術（切除）
150264010	surgery for anal cancer (with rectal amputation)	肛門悪性腫瘍手術（直腸切断を伴うもの）
150190910	anal dilatation (invasive)	肛門拡張術（観血的）
150191010	anal sphincteroplasty (scartectomy)	肛門括約筋形成手術（瘢痕切除）



