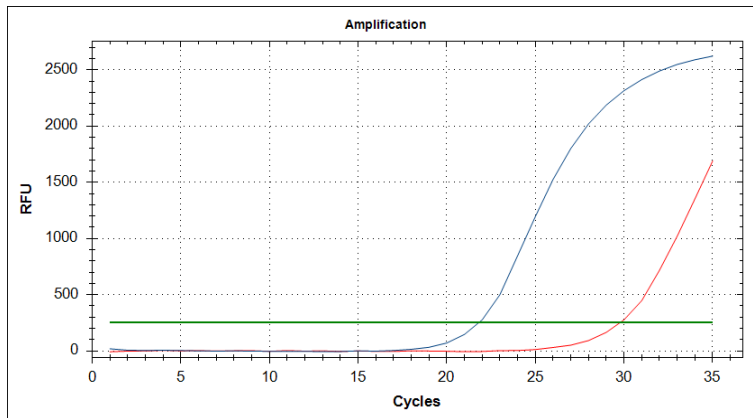


1 **Supplemental file 2. Assay interpretation**

2 Comparison of the amplification curve generated by the ancestral primer (blue,
3 Diagram 1) and the derived primer (red, Diagram 2). Since the ancestral primers
4 matches the SNP at the ultimate 3' end nucleotide the Cq value will be significantly
5 lower compared to the non-complementary derived primer. Thus, the template
6 exhibits the ancestral SNP state in this example. The products can be distinguished by
7 comparing their T_m-values (Diagram 2).

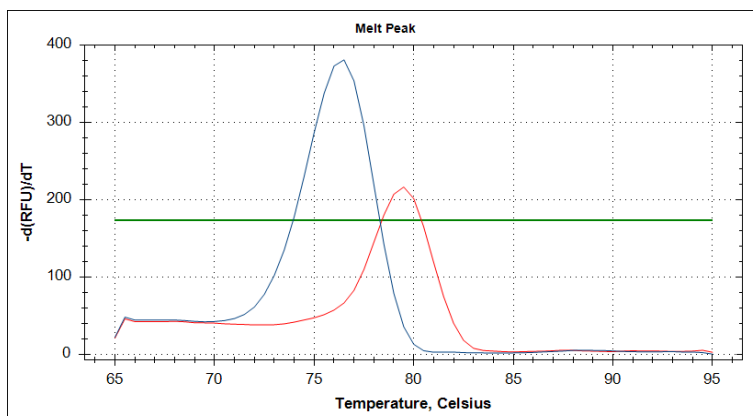
8

9 **Diagram 1**



10

11 **Diagram 2**



12