

Supplement to "the optimal protocol for measuring an albuminuria class transition in clinical trials in diabetic kidney disease"

Authors:

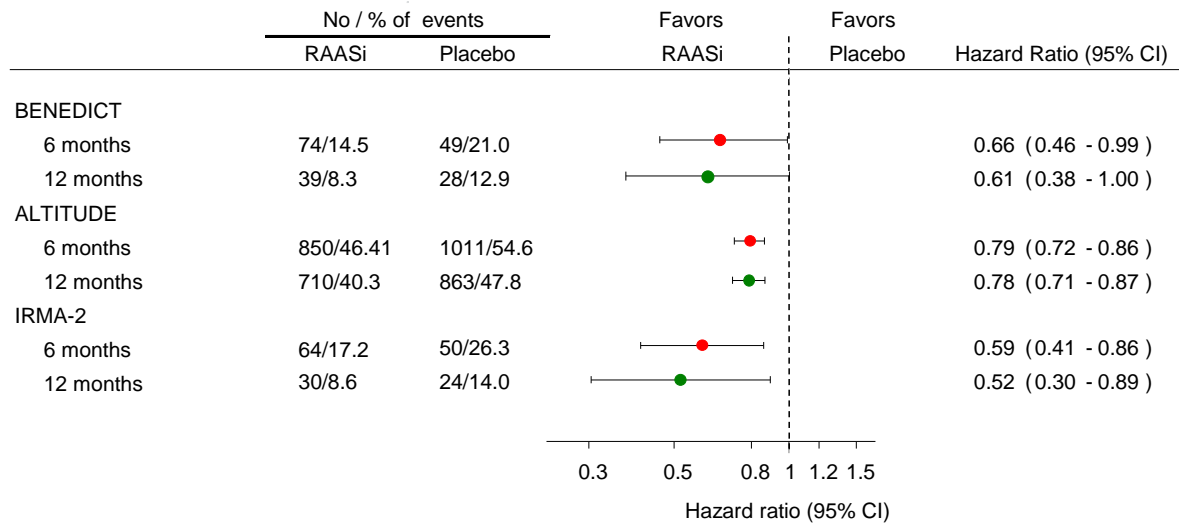
T.F. Tobias F. Kröpelin, Dick de Zeeuw, Giuseppe Remuzzi, Rudy Bilous, Hans-Henrik Parving, Hiddo J.L. Heerspink

Content:

Figure 1: Magnitude and precision of the drug effect estimate with a single urine collection and different time-intervals between study visits.

Figure 2: Magnitude and precision of the drug effect estimate with a single urine collection and various percentage albuminuria increases *without* a class transition and without a confirmatory visit.

Supplement Figure 1: Magnitude and precision of the drug effect estimate with a single urine collection and different time-intervals between study visits. Solid circles represents the estimate of the treatment effect and the horizontal line indicates the 95% confidence interval.



Supplement Figure 2: Magnitude and precision of the drug effect estimate with a single urine collection and various percentage albuminuria increases *without* a class transition and without a confirmatory visit. Solid circles represents the estimate of the treatment effect and the horizontal line indicates the 95% confidence interval.

