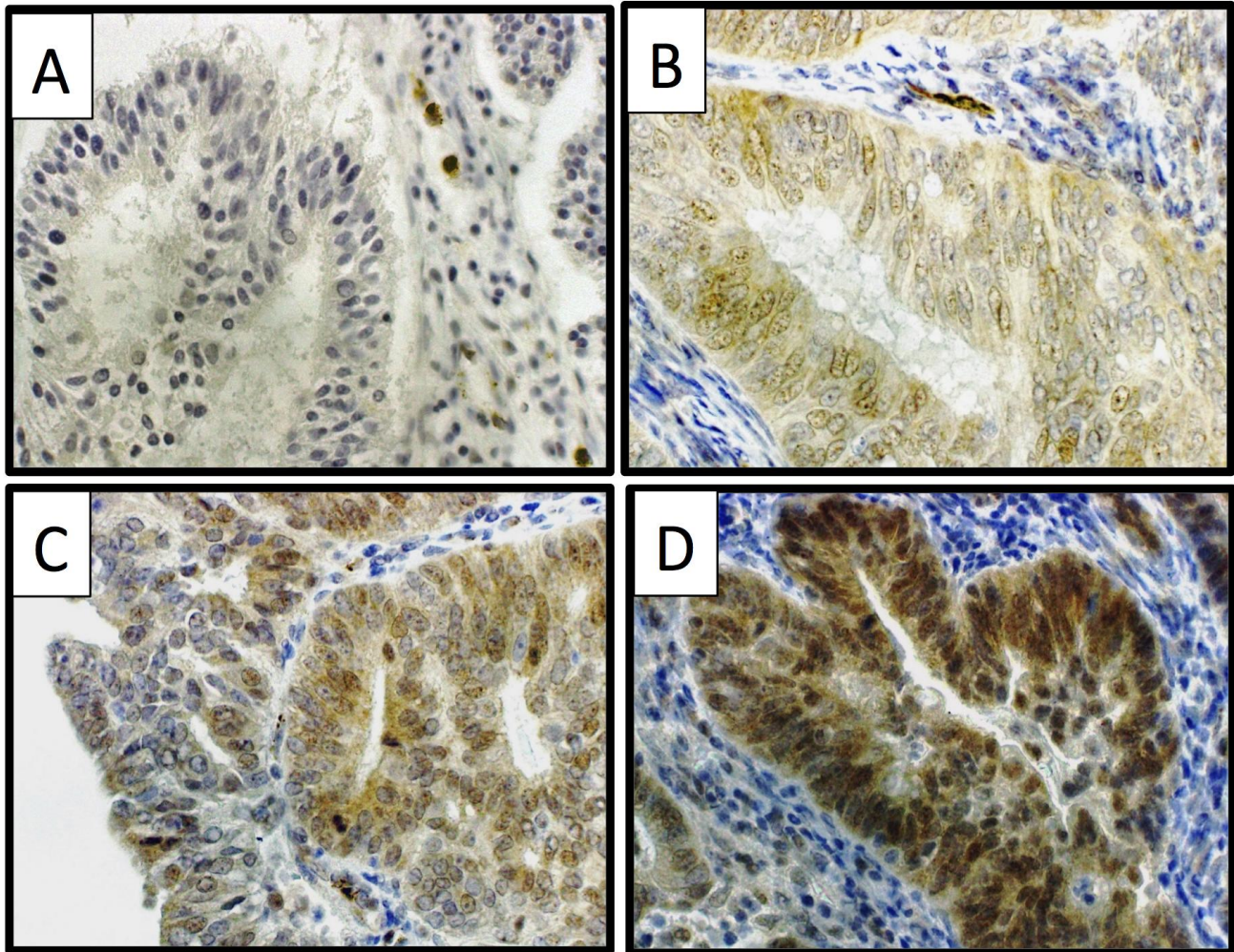


Anti-tumor effect of estrogen-related receptor alpha knockdown on uterine endometrial cancer

Supplementary Material



Supplementary Figure S1

The intensity of the immunohistochemical staining for $ERR\alpha$ was scored as 0 (no staining) (A), 1 (weak staining) (B), 2 (moderate staining) (C), and 3 (strong staining) (D).