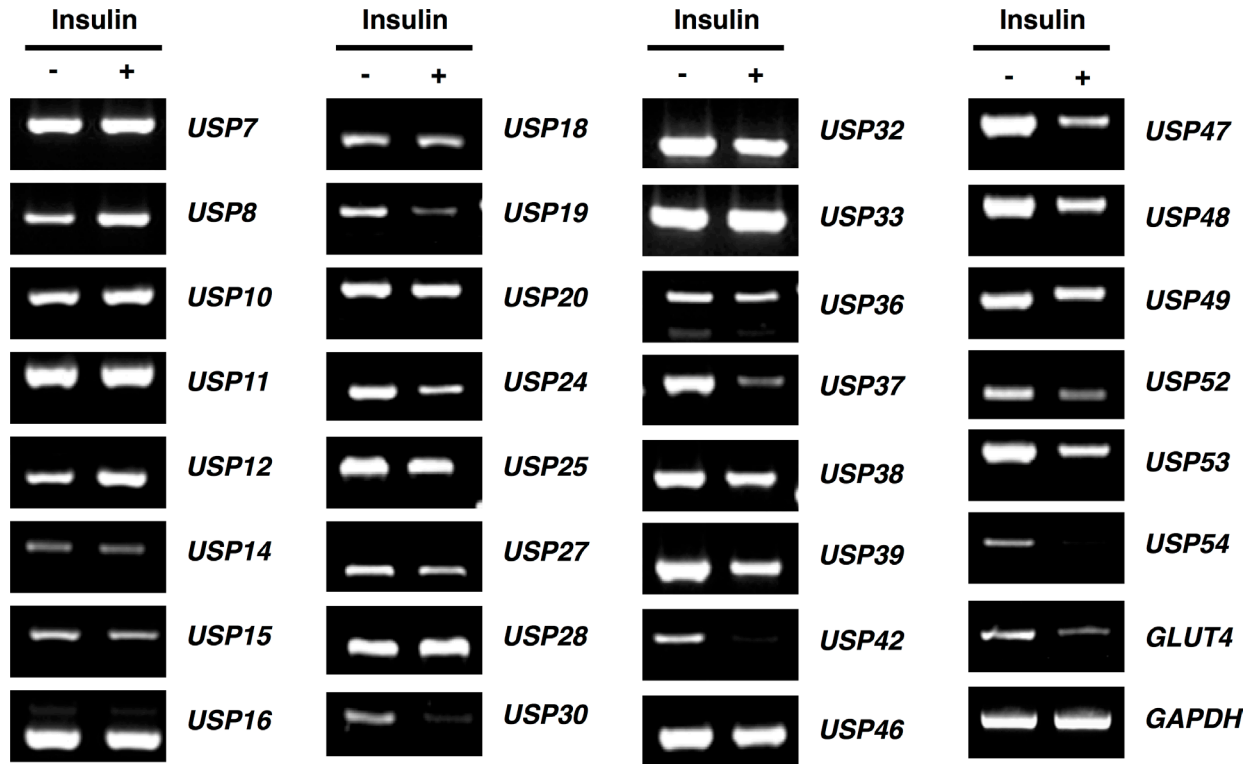
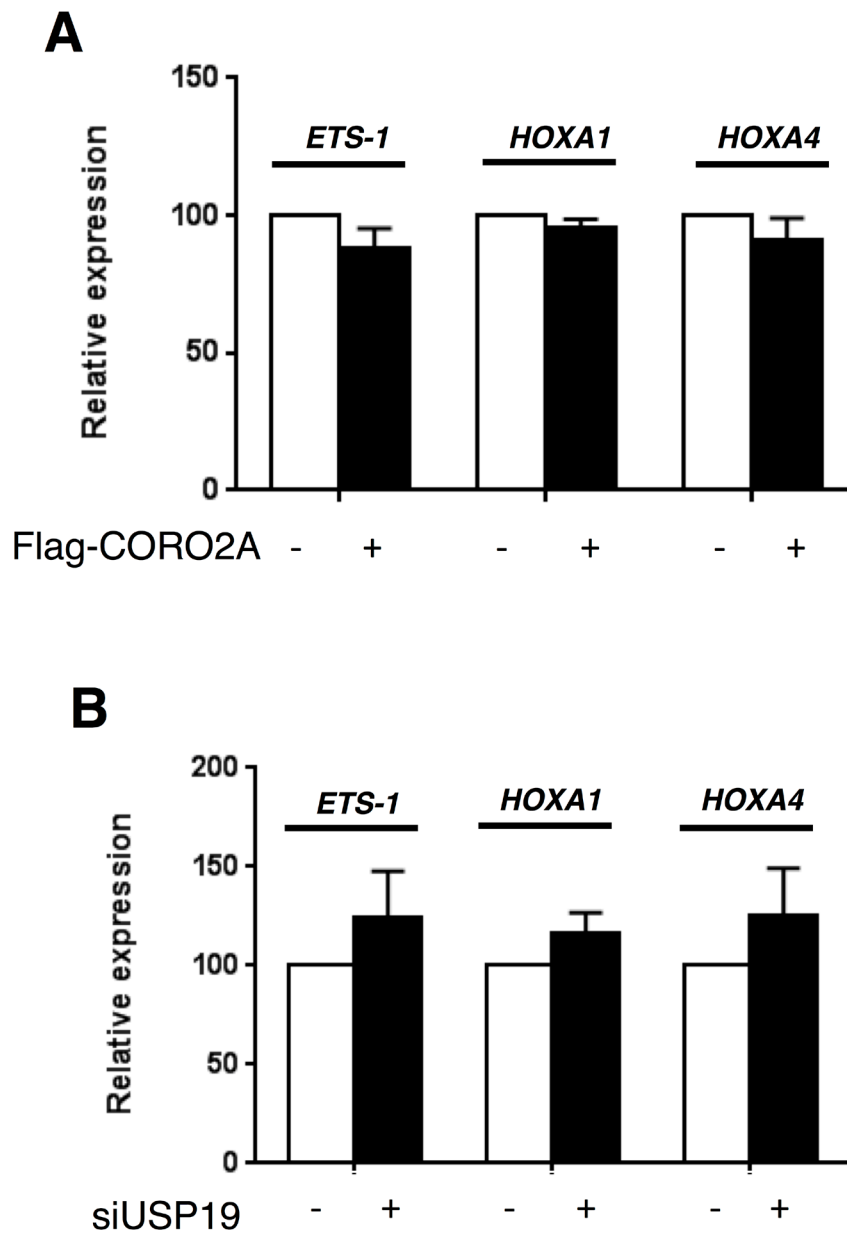


SUPPLEMENTARY FIGURES



Supplementary Figure S1: Expression profiling of *Dub* genes with insulin treated 3T3-L1 cells. 3T3-L1 cells were harvested after insulin treatment, and RT-PCR was performed with cDNA from harvested cells and indicated *Dub* primers.



Supplementary Figure S2: The levels of transcription for *Ets-1*, *HOXA1*, and *HOXA4* in the expression of *CORO2A* and knockdown of *USP19*. RT-PCR was performed with cDNA which obtained from **A**. Flag-tagged *CORO2A* or **B**. *USP19* siRNA transfected MCF7 cells. *Ets-1*, *Hoxa1*, and *Hoxa4* primers were used for RT-PCR.