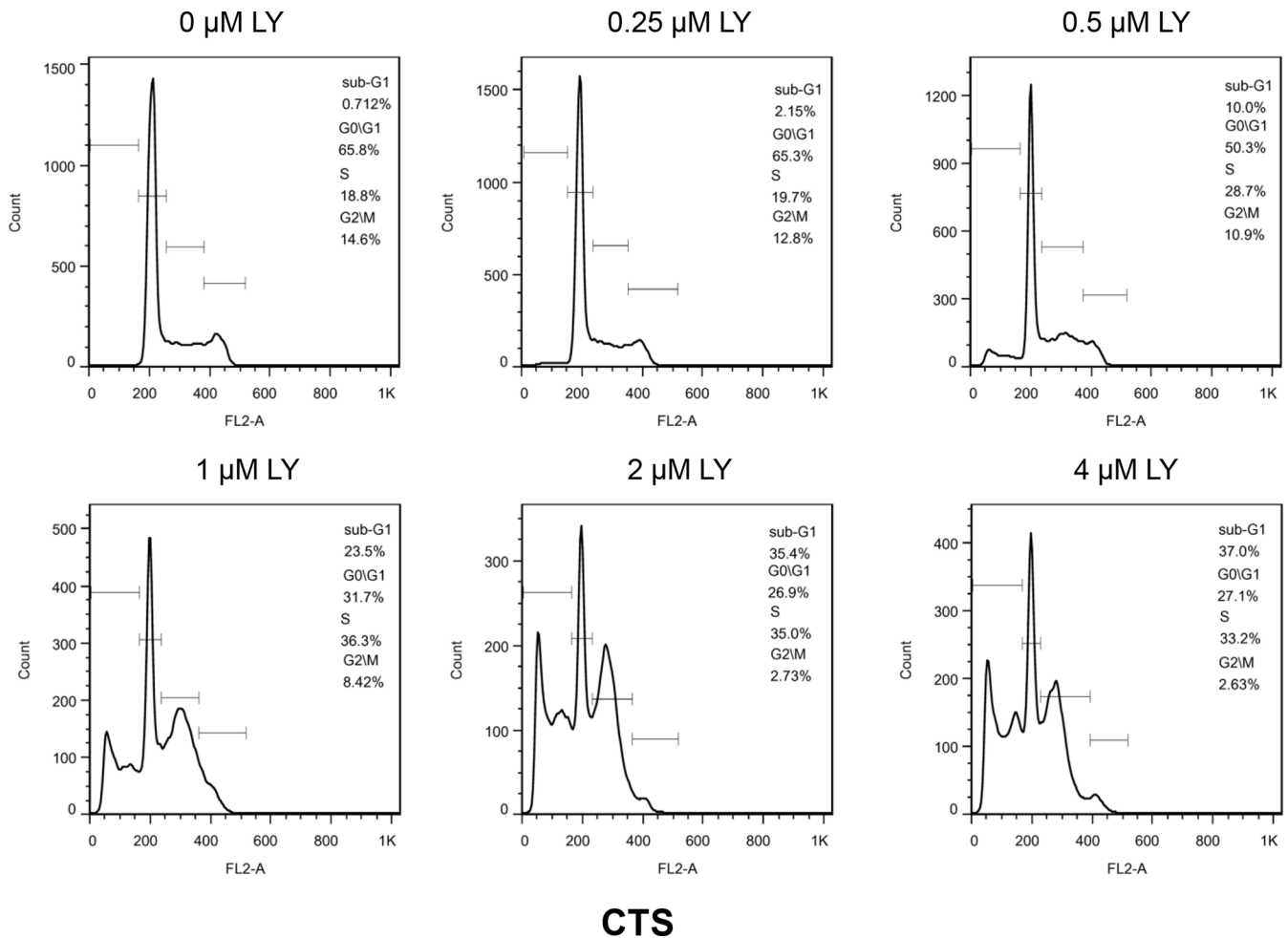
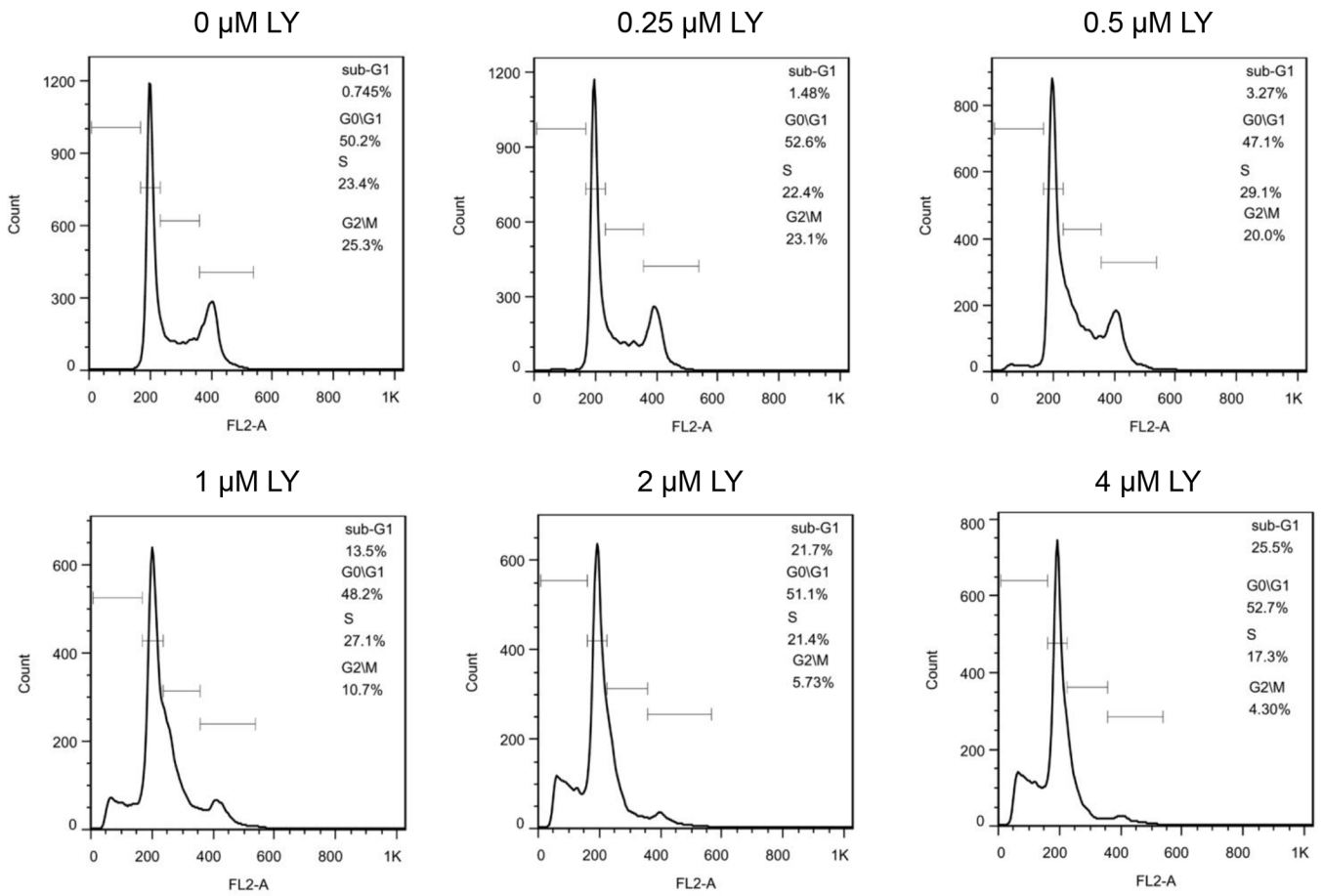


Inhibition of CHK1 enhances cell death induced by the Bcl-2-selective inhibitor ABT-199 in acute myeloid leukemia cells

Supplementary Materials

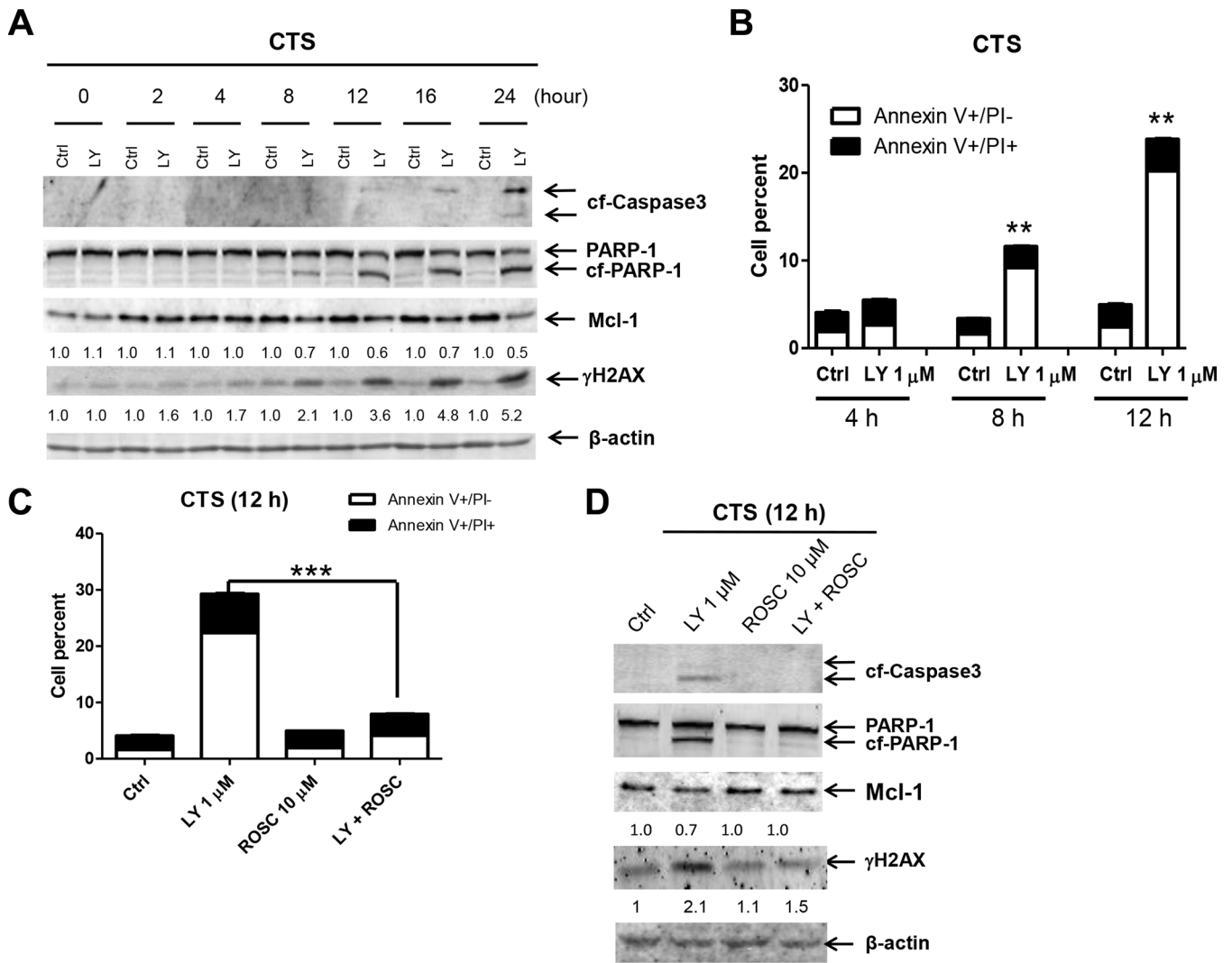


Supplementary Figure S1: CTS cells were treated for 24 h with LY2630618 (LY), then fixed with ethanol and stained with PI for cell cycle analysis.



THP-1

Supplementary Figure S2: THP-1 cells were treated for 24 h with LY, then fixed with ethanol and stained with PI for cell cycle analysis.



Supplementary Figure S3: (A) CTS cells were treated with 4 μM LY or without (control, designated ctrl) for the indicated times. Whole cell lysates were subjected to Western blotting. (B) Cells were treated with LY for 4 h, 8 h, and 12 h and then subjected to Annexin V/PI staining and flow cytometry analysis. **indicates $p < 0.005$. (C) CTS cells were treated with LY and Roscovitine (ROSC) for 12 h. Cells were then subjected to Annexin V/PI staining and flow cytometry analysis. ***indicates $p < 0.0005$. (D) Whole cell lysates were subjected to Western blotting.