

NEAT1/miR-335-5p/c-met axis in pancreatic cancer

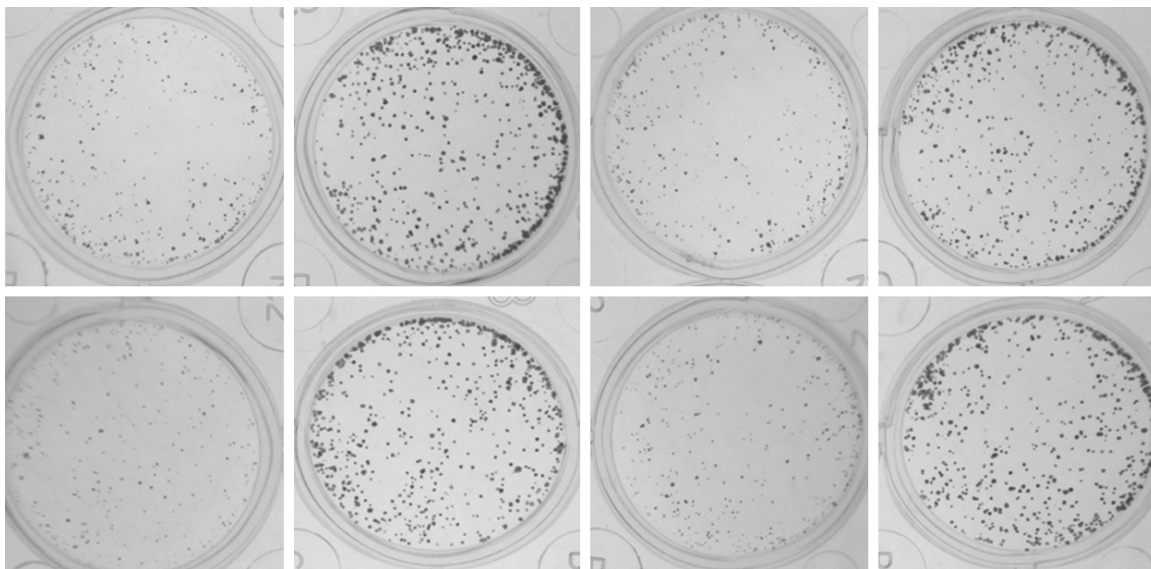


Figure S1. NEAT1 and miR-335-5p regulate pancreatic cancer cell proliferation via c-met. Effect of NEAT1 and miR-335-5p on cell proliferation as evaluated by a colony formation assay. PANC-1 (upper panel) and SW1990 (lower panel) cells transfected with si-NEAT1, si-NEAT1 and c-met, miR-335-5p mimic or miR-335-5p mimics and c-met were seeded in 12-well plates (left to right). The figure shows cells 10 days after seeding; the cells were stained with crystal violet.