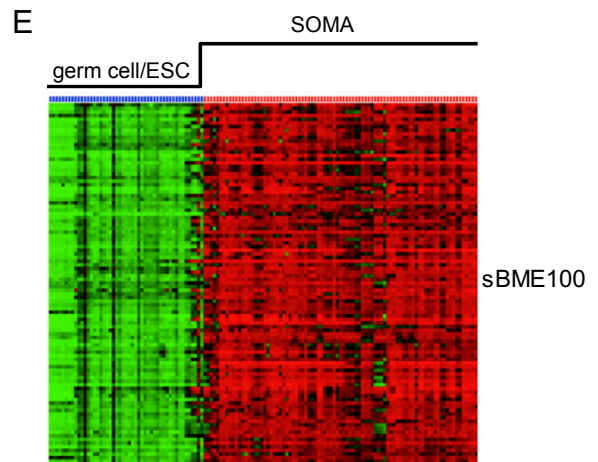
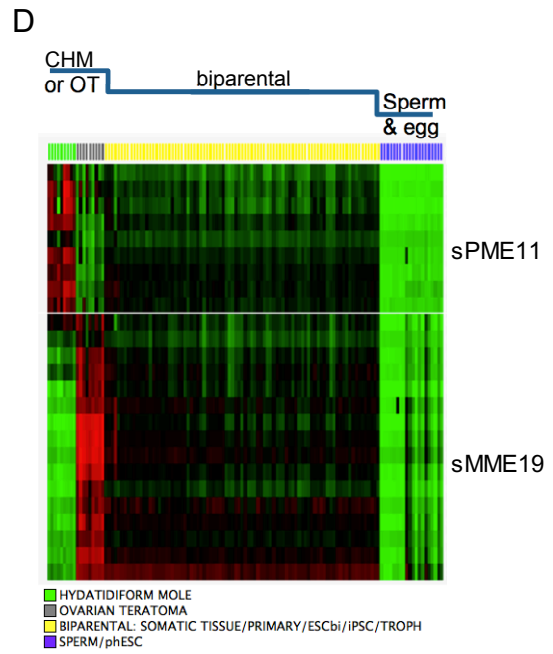
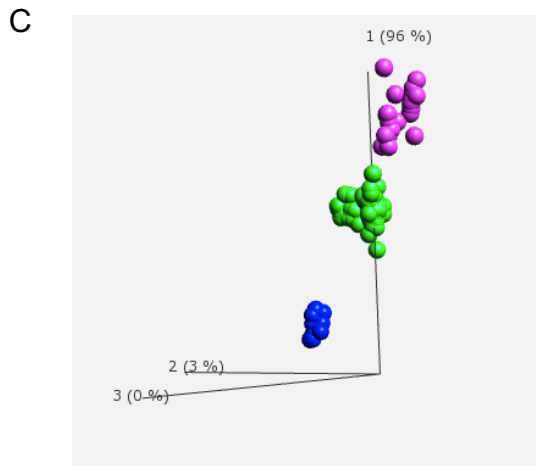
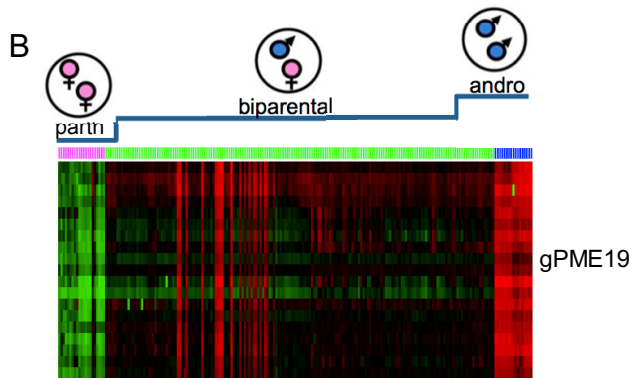
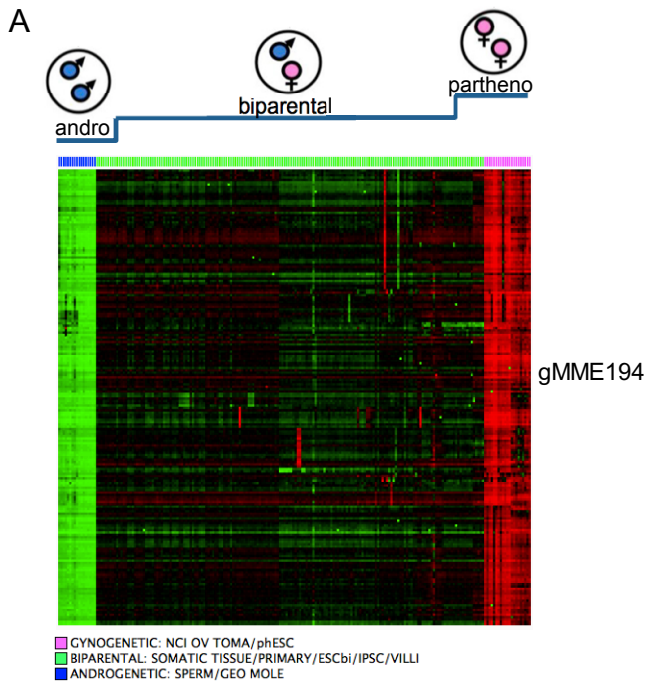


Figure S11



Supplemental Fig. S11. Rank regression analysis of reference androgenote, bi-parental, and gynogenote samples to identify robust imprinted 450K array targets. **A:** germline maternal methylation targets. **B:** germline paternal methylation targets. **C.** PCA shows nearly all variance within somatic tissue methylomes of the union of gMME and gPME modules is captured along male-female germline differential methylation axis. Colors represent samples used in panels **A** and **B**. **D:** Somatic (secondary) paternal and maternal methylation targets. **E:** somatic, *de novo*, parent-independent, biallelic methylated targets.