

Figure S1 – Level of actin in the presence of TGF-β. Western blot analysis for actin and GAPDH was carried out using protein lysates extracted from untreated lens explants and TGF-β2-treated lens explants.

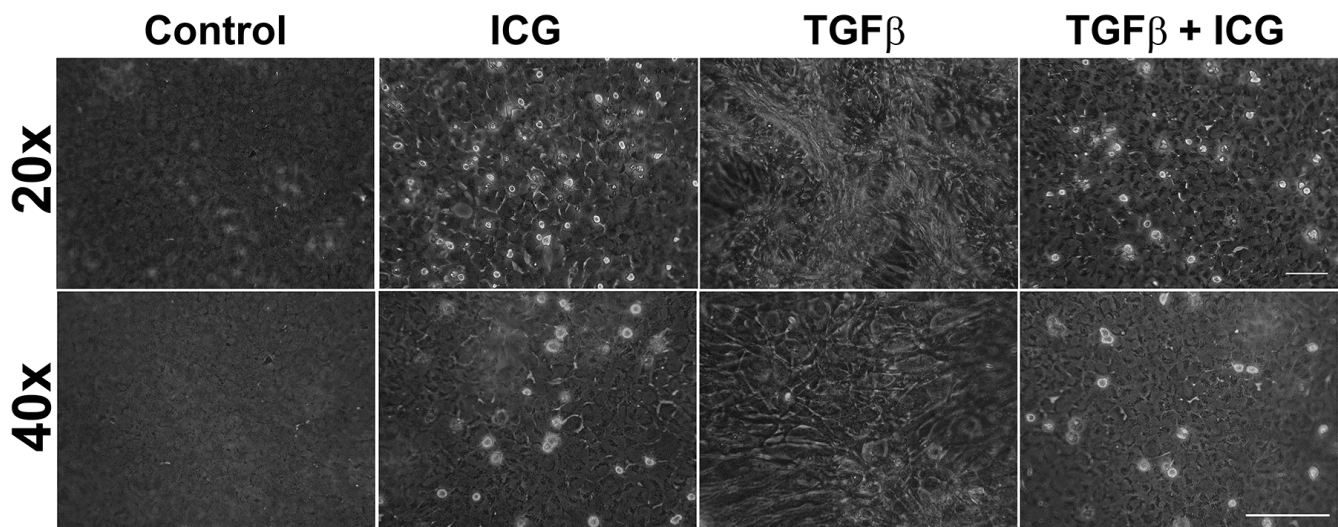


Figure S1

Figure S2 – Cellular morphology of lens explants in the presence of ICG-001. Untreated, ICG-001-treated, TGF-β2-treated, TGF-β2 and ICG-001 co-treated lens explants were imaged using Leica DMIL phase contrast microscope. The images were further analyzed using Photoshop CS4. Scale bar, 100μm.

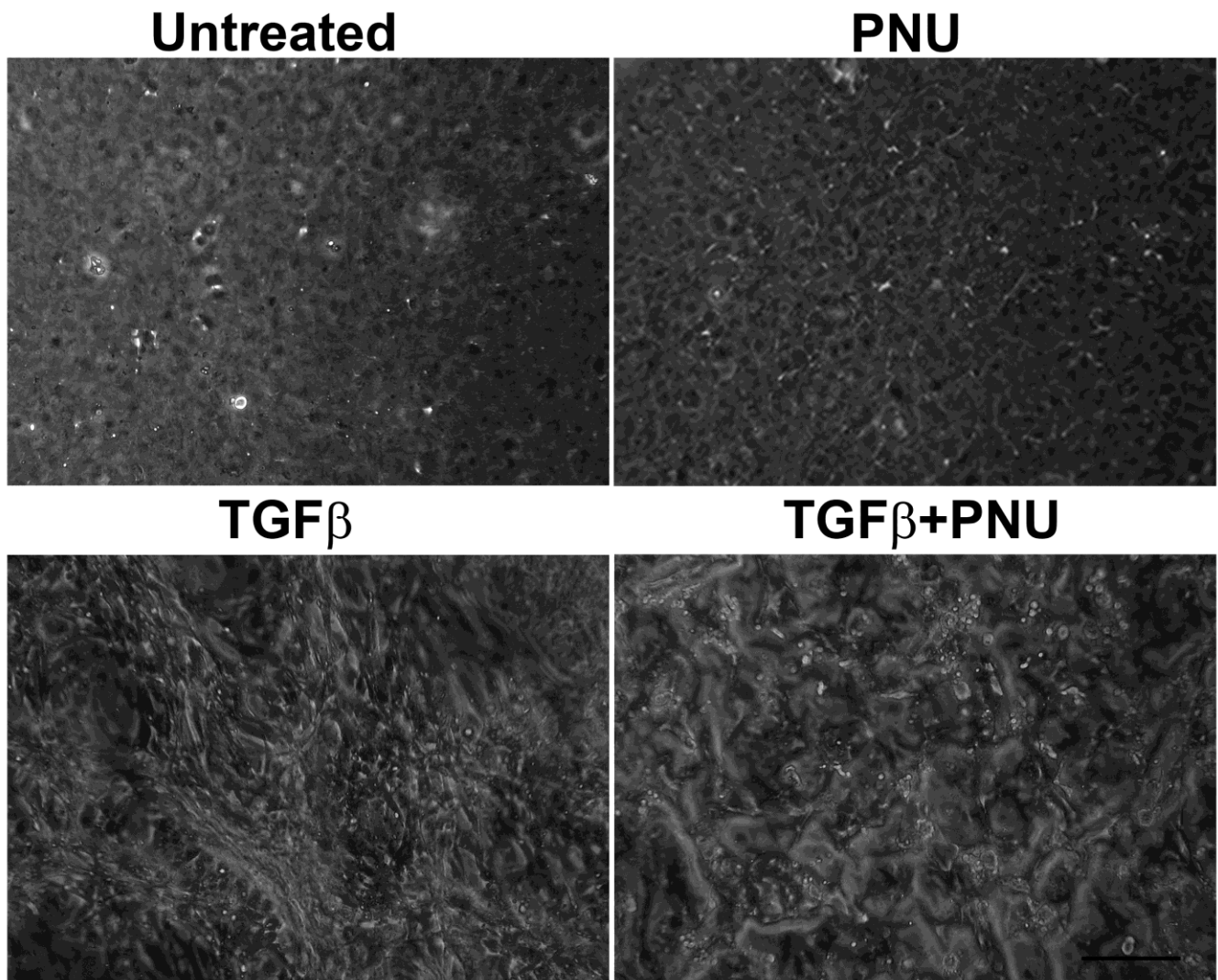


Figure S3 – Cellular morphology of lens explants in the presence of PNU. Untreated, PNU-treated, TGF- β 2-treated, TGF- β 2 and PNU co-treated lens explants were imaged using Leica DMIL phase contrast microscope. The images were further analyzed using Photoshop CS4. Scale bar, 100 μ m.

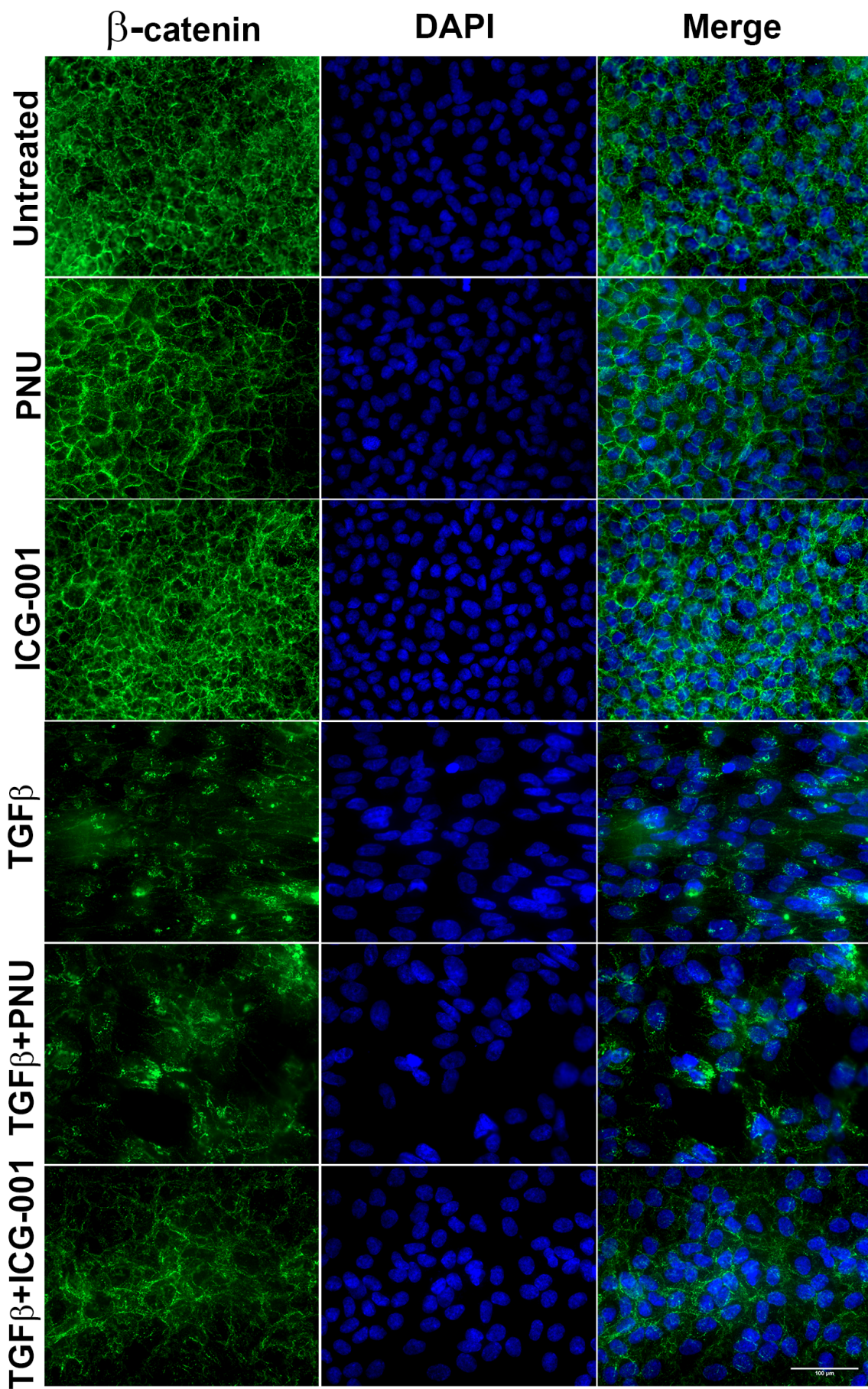


Figure S4 – Localization of β -catenin in the presence of PNU and ICG-001. Untreated, PNU-treated, ICG-001-treated, TGF- β 2-treated, TGF- β 2 and ICG-001 or PNU co-treated lens explants were immunostained for β -catenin. Slides were imaged using 63x lens of Zeiss axiovert apotome fluorescent microscope. Scale bar, 100 μ m.