

Truncations in the C-terminus of Cx46 and Cx50 from 22- and 19-year old lenses

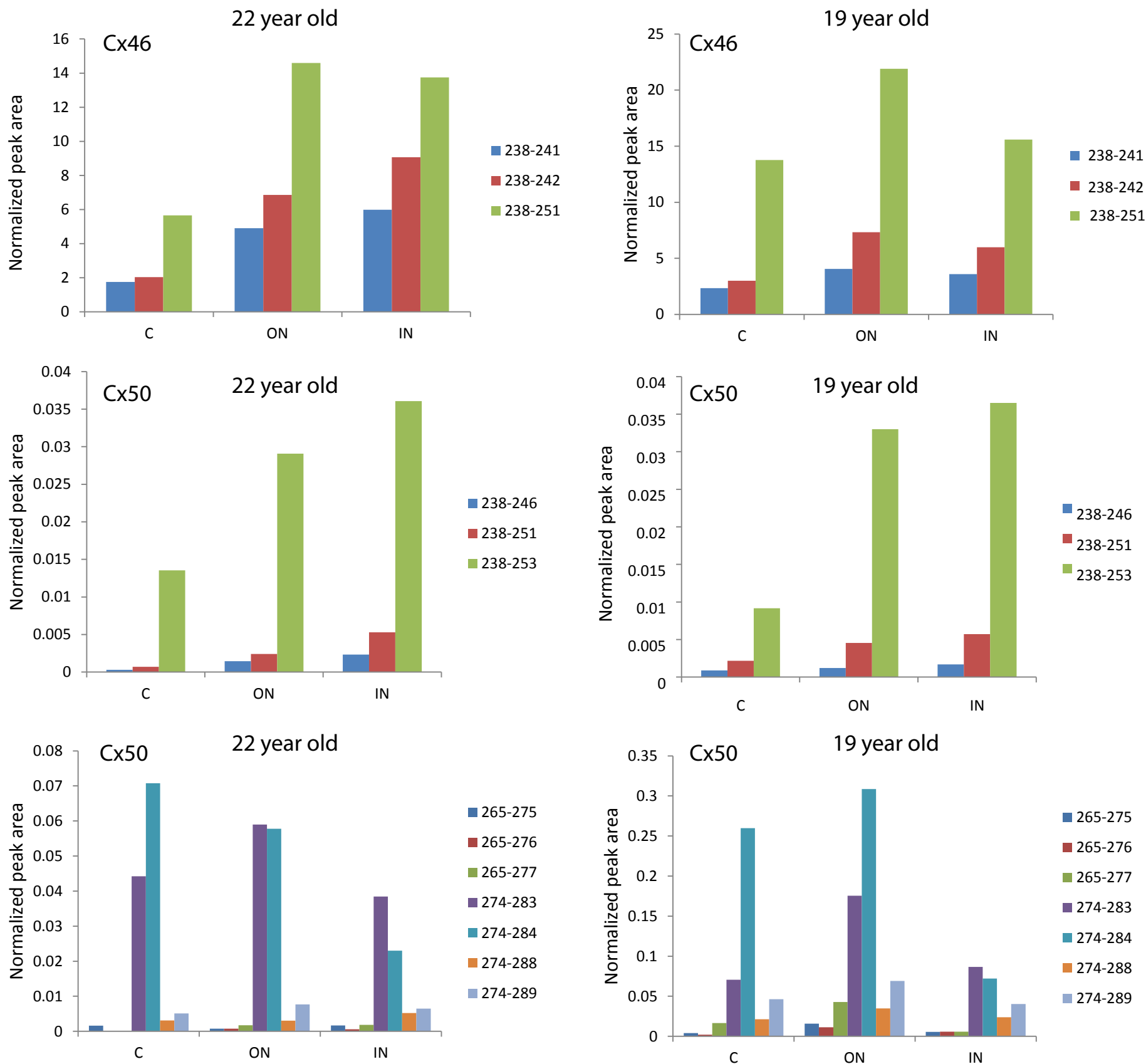


Figure S1

Truncations in the cytoplasmic loop of Cx46 and Cx50 from 22- and 19-year old lenses

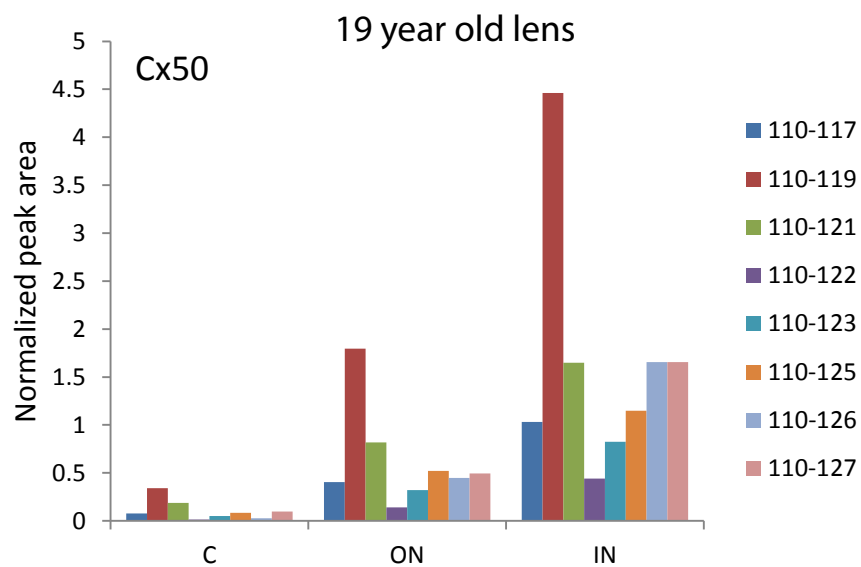
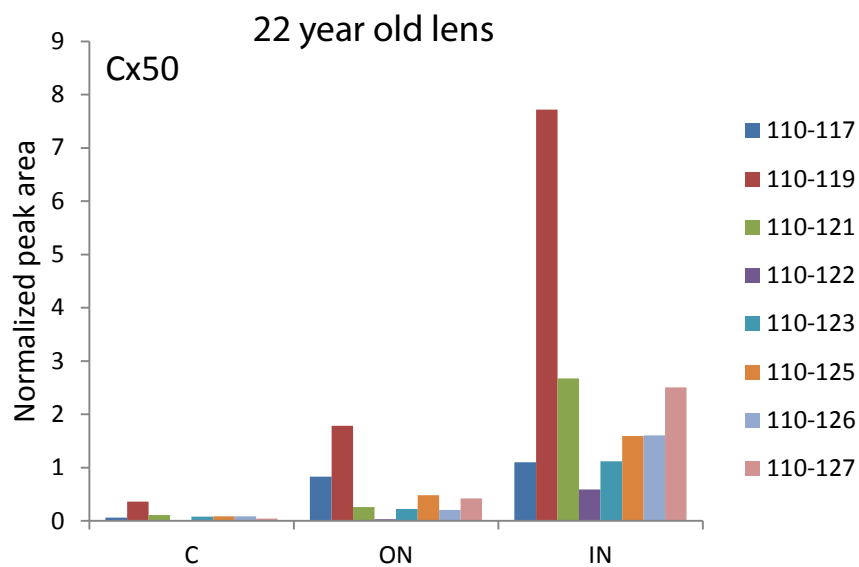
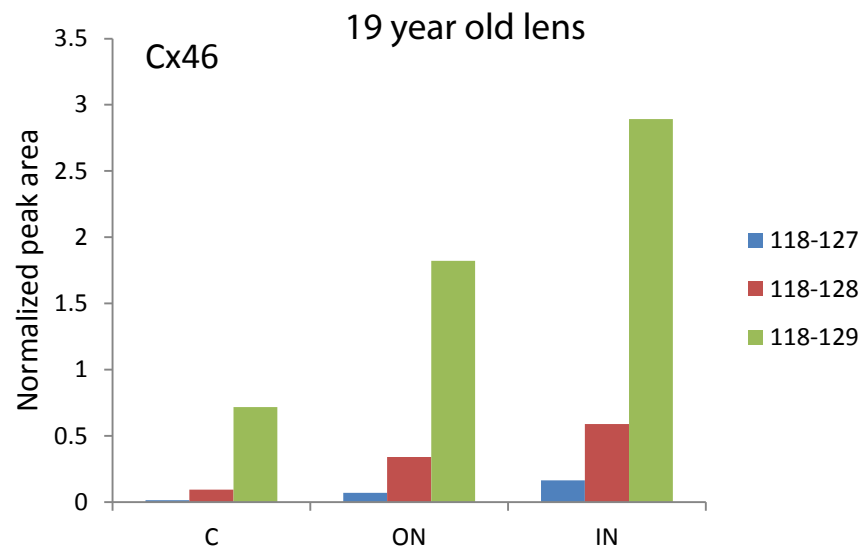
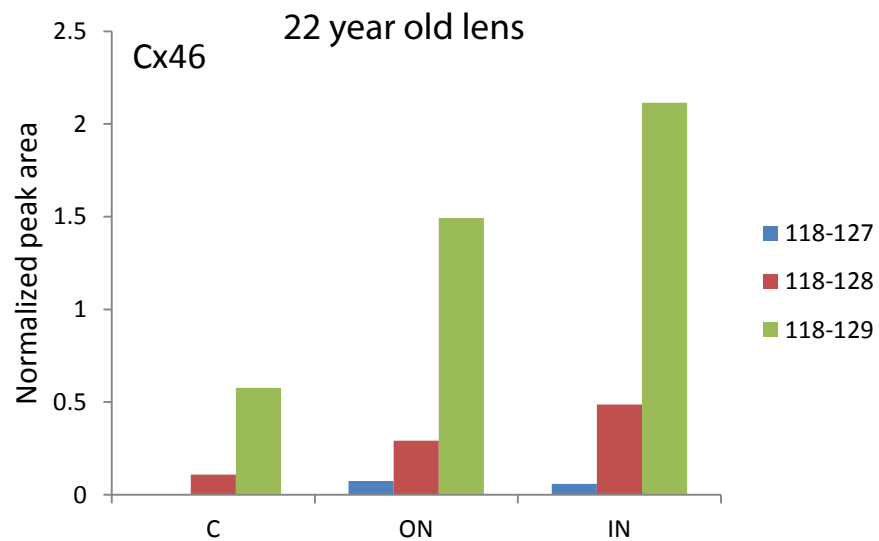
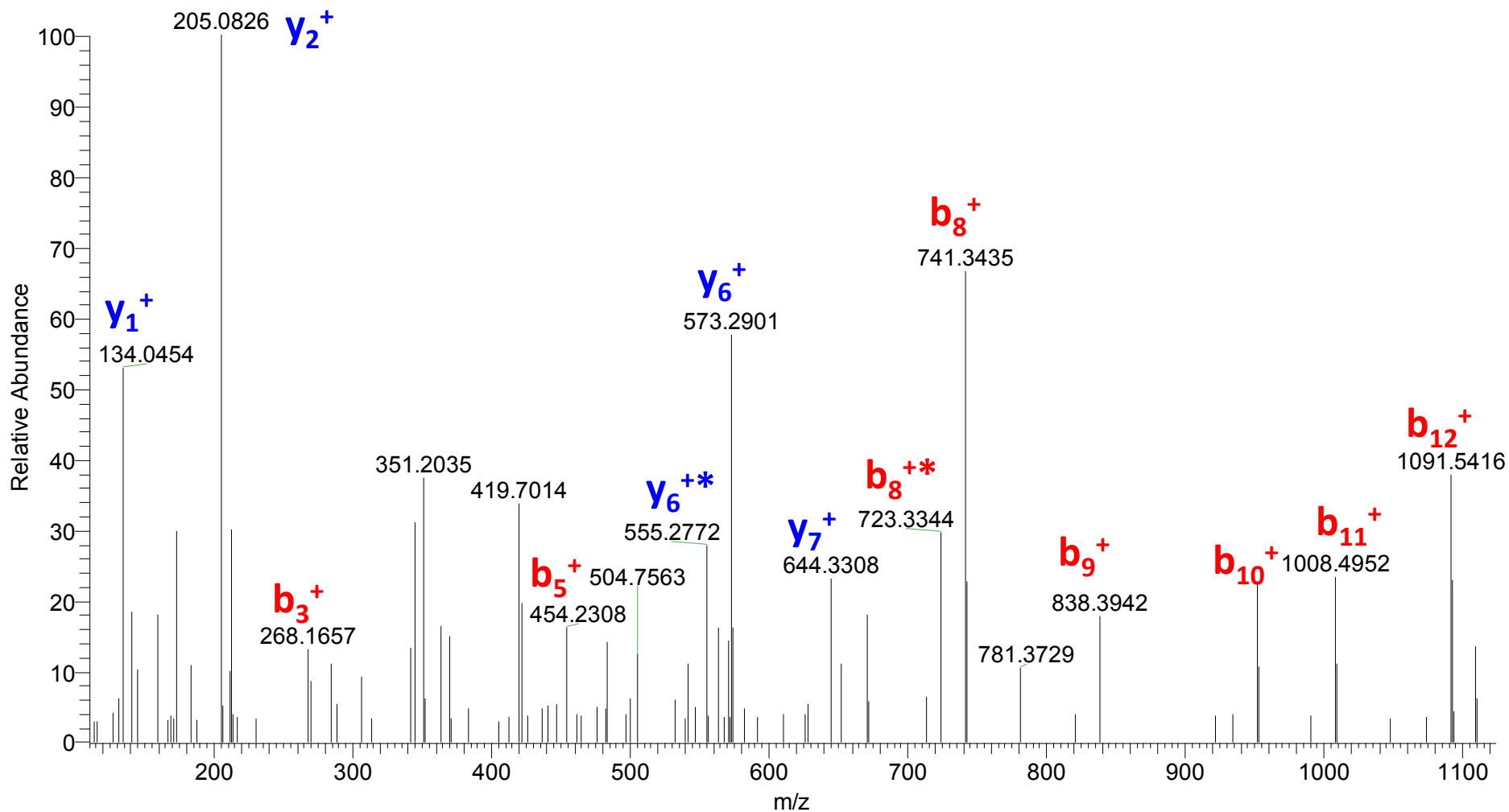


Figure S2

Tandem mass spectrum of Cx46 238-251(LGPDASEAPLGTAD):



* Indicates ions losing water

Figure S3

Tandem mass spectrum of Cx50 238-253(RPVEQPLGEIPEKSLH)

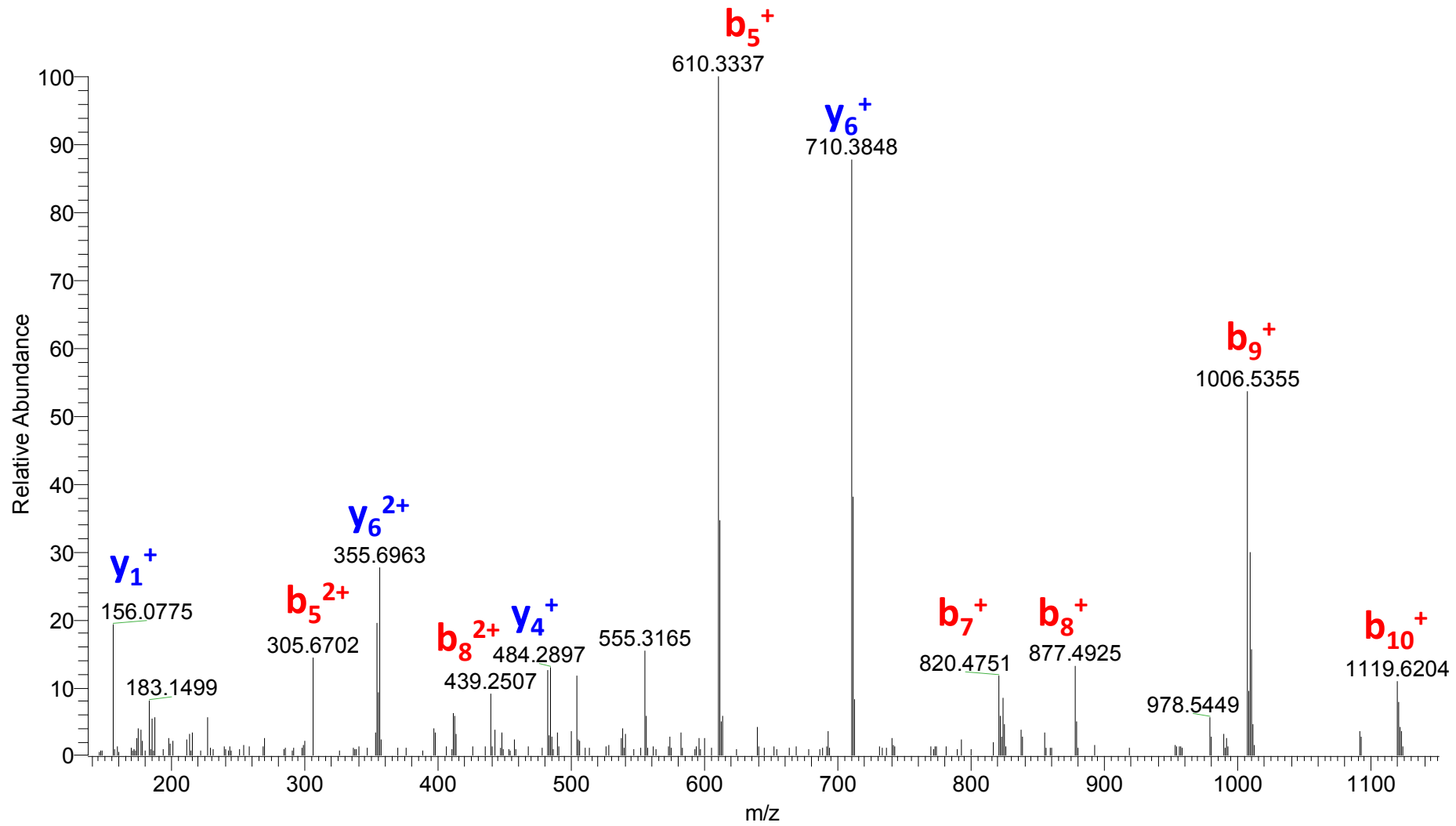


Figure S4

Tandem mass spectrum of Cx50 274-284 (IVSHYFPLTEV)

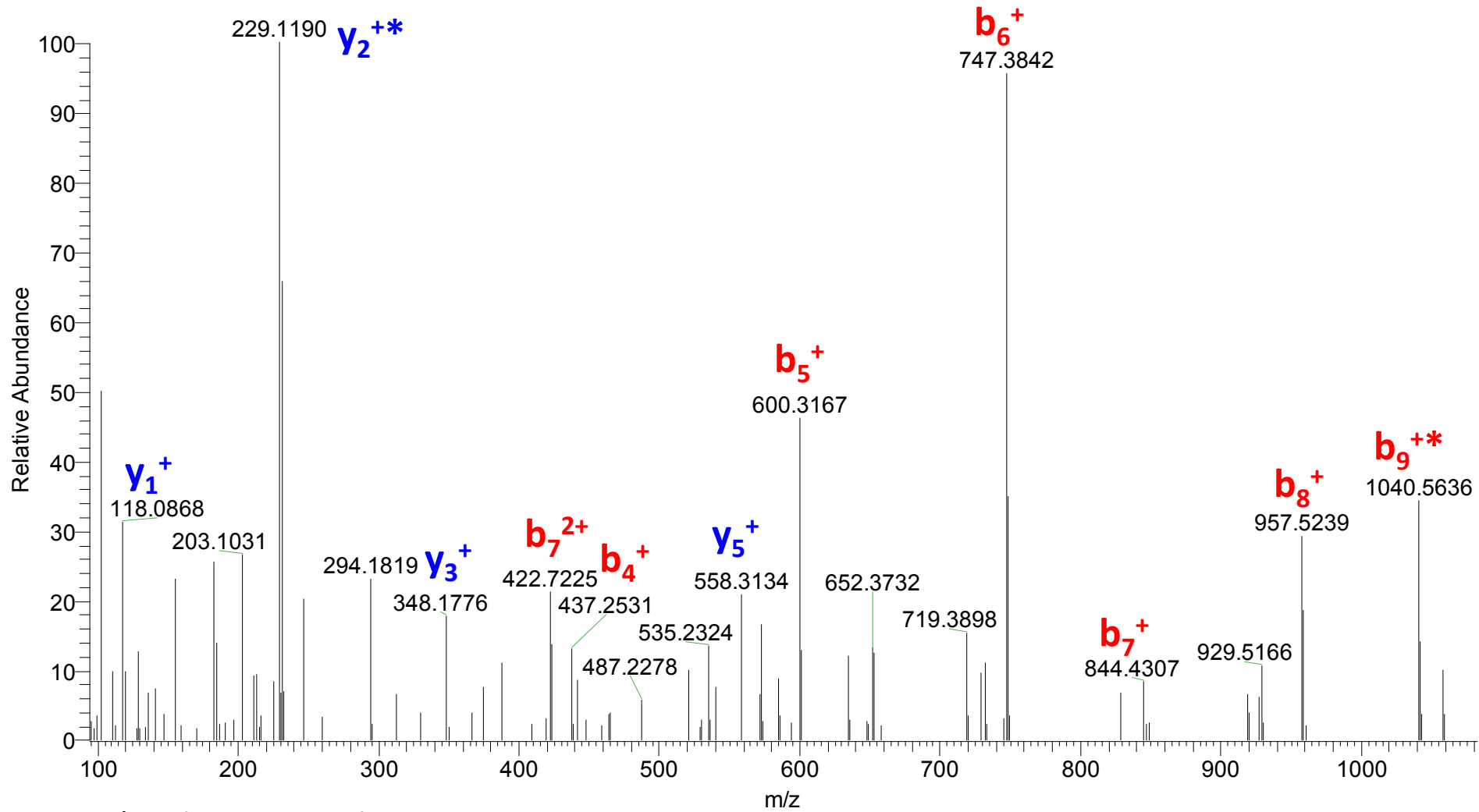
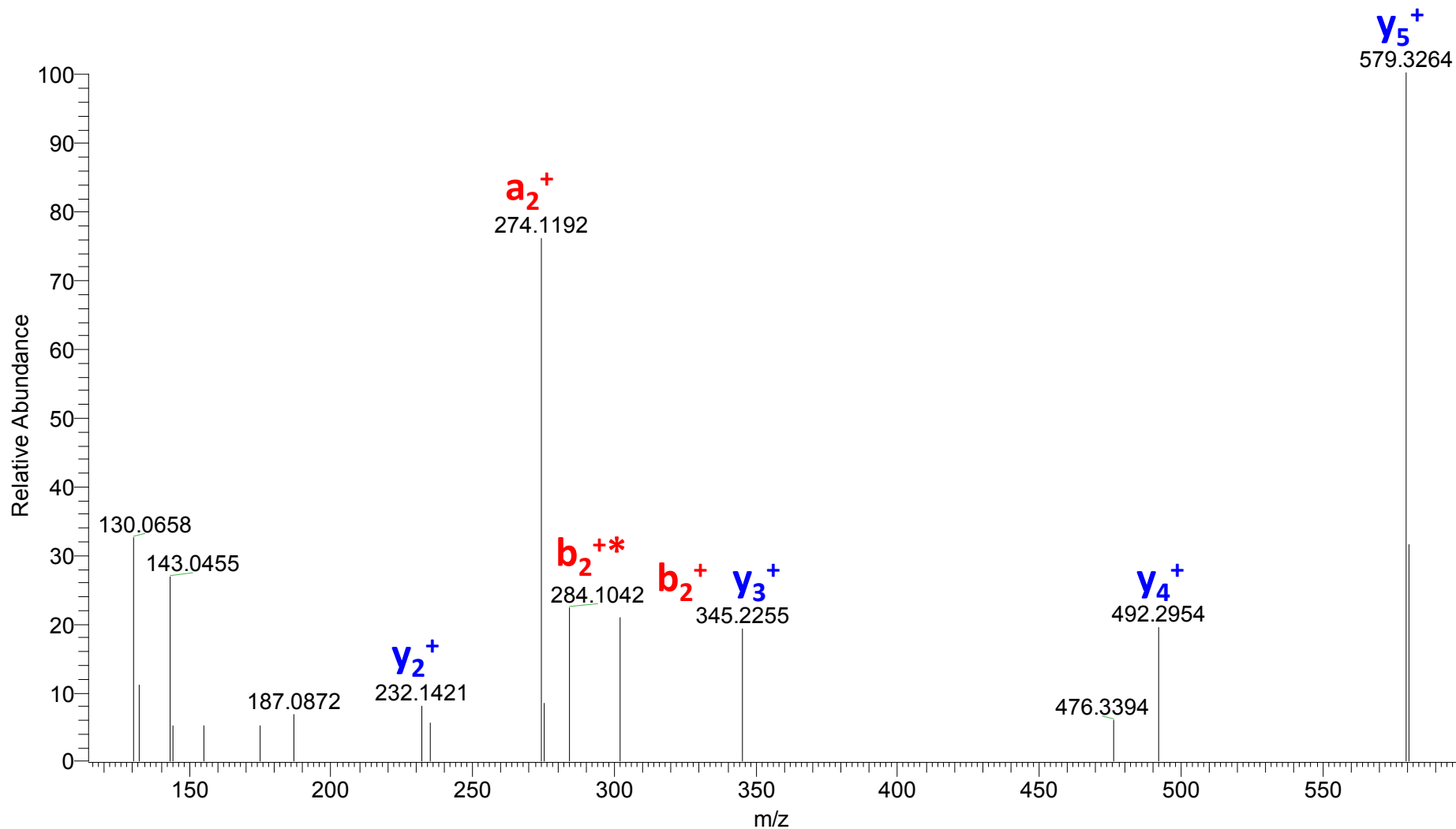


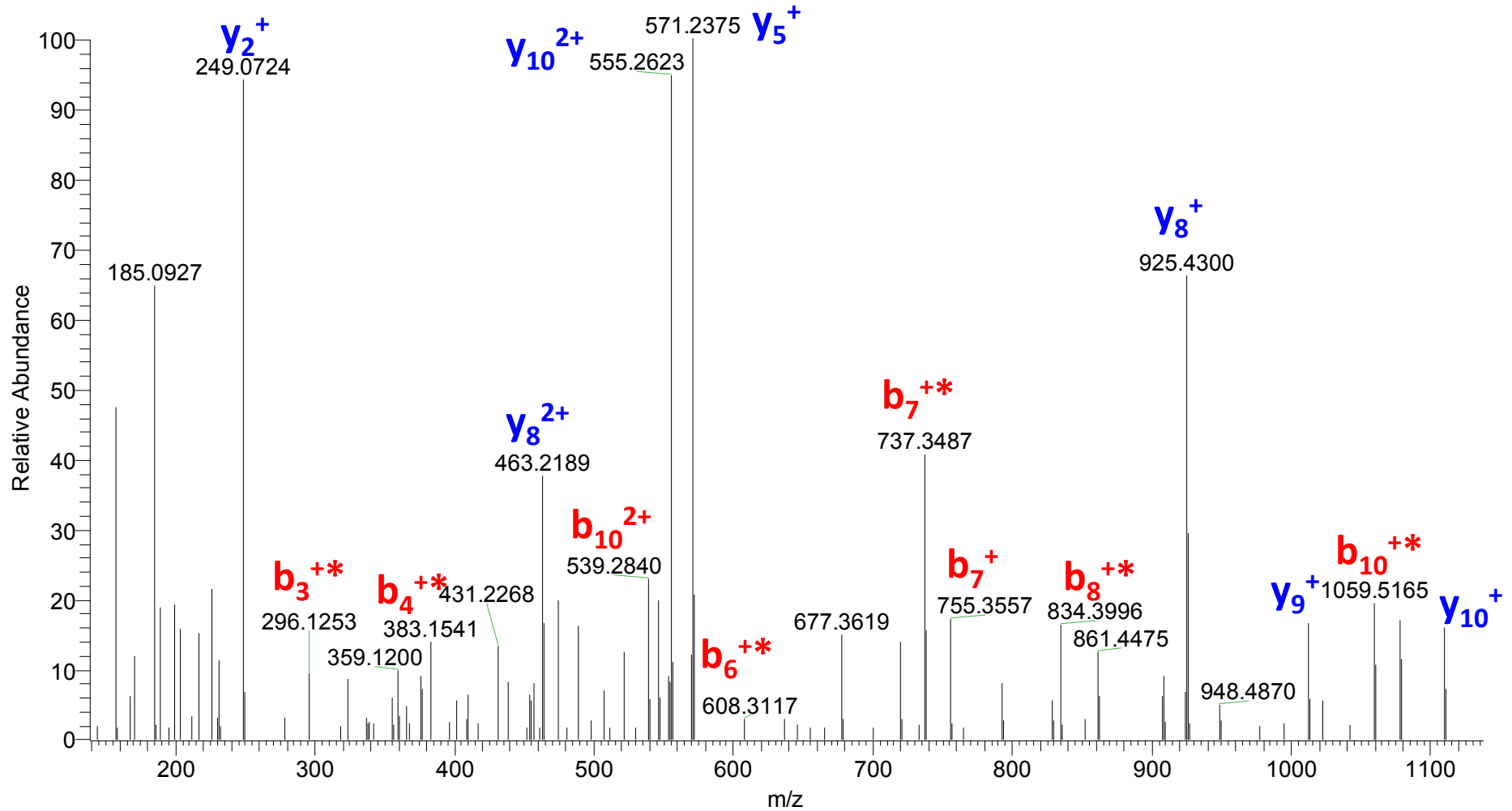
Figure S5

Tandem mass spectrum of Cx46 3-9 (DWSFLGR)



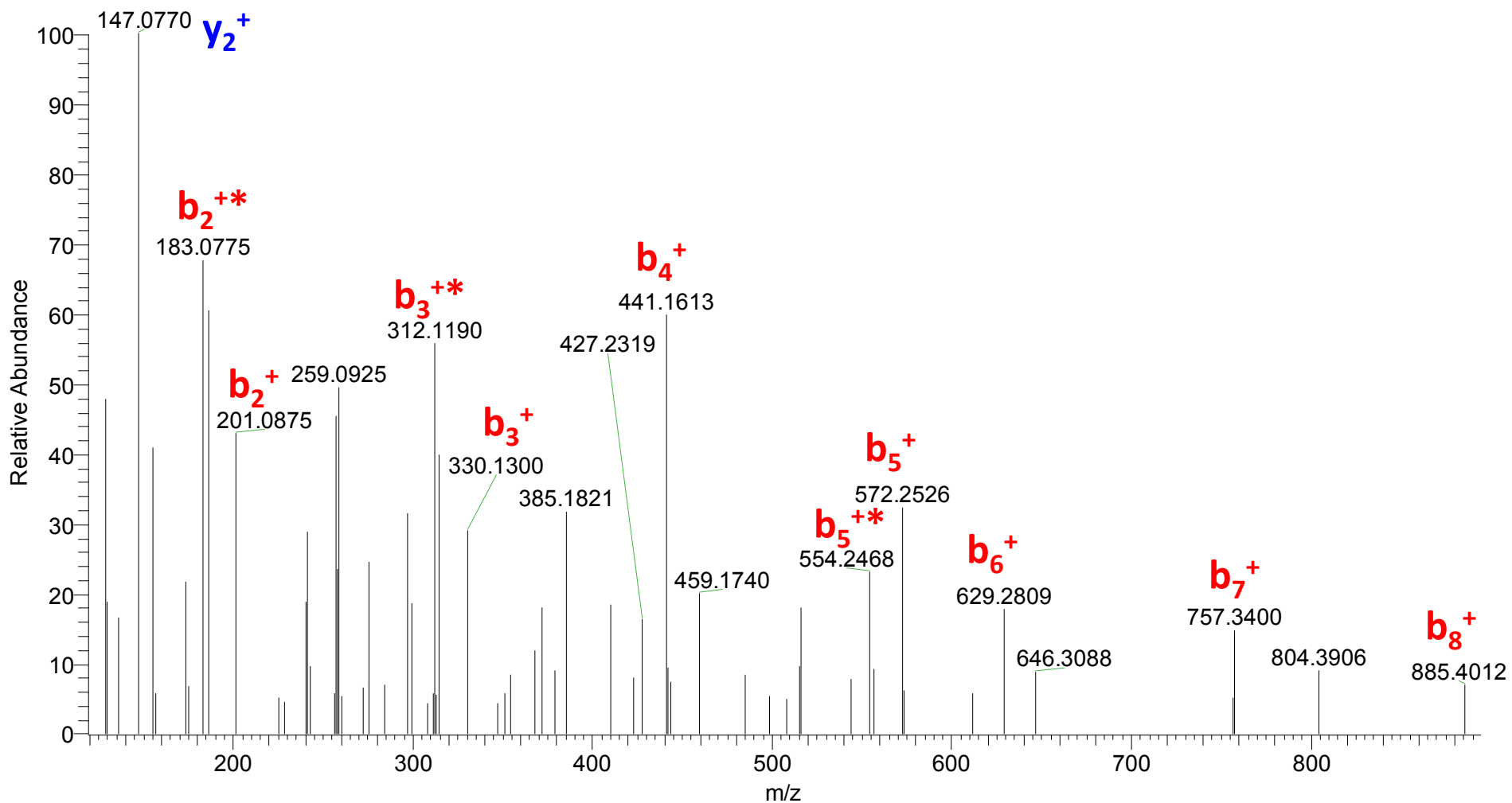
* Indicates ions losing water

Tandem mass spectrum of Cx46 118-129 with deamination (ESPSPKEPPQDD)



* Indicates ions losing water

Tandem Mass Spectrum of Cx50 110-119 (EAEELGQQAG)



* Indicates ions losing water

Figure S8