

Expanded View Figures

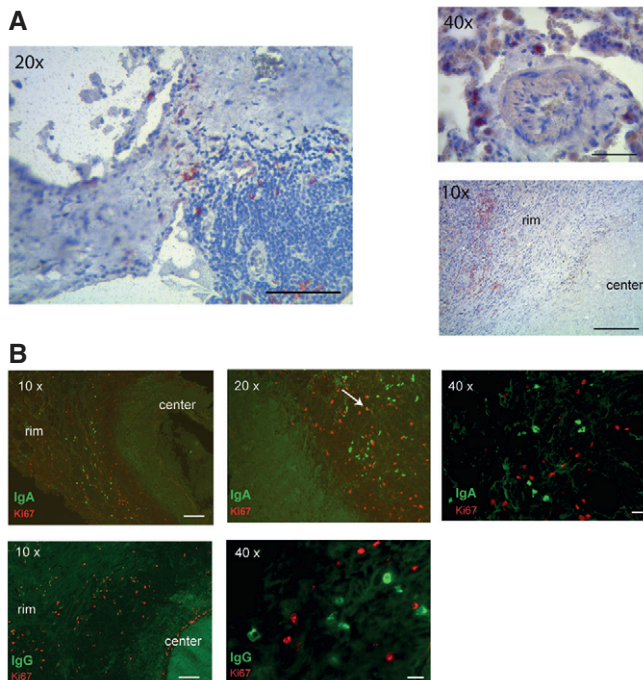


Figure EV1. IgA⁺ and IgG⁺ plasmablasts/cells in the lung of TB patients.

A Immunohistochemistry staining for CD138 of infected lung sections from TB patients. Images were taken at different magnifications as indicated. The rim and the center of one granuloma are indicated in the lower right picture.

B (Top) Immunofluorescence staining for IgA (green) and Ki67 (red) of infected lung sections of one representative out of three analyzed TB patients. White arrow indicates one Ki67/IgA double-positive cell. (Bottom) Immunofluorescence staining for IgG (green) and Ki67 (red).

Data information: Different magnifications as indicated. Scale bars, 10 μ m for 40x magnification or 100 μ m for 10x and 20x magnifications. Data are representative of two independent experiments with samples from three different TB patients.