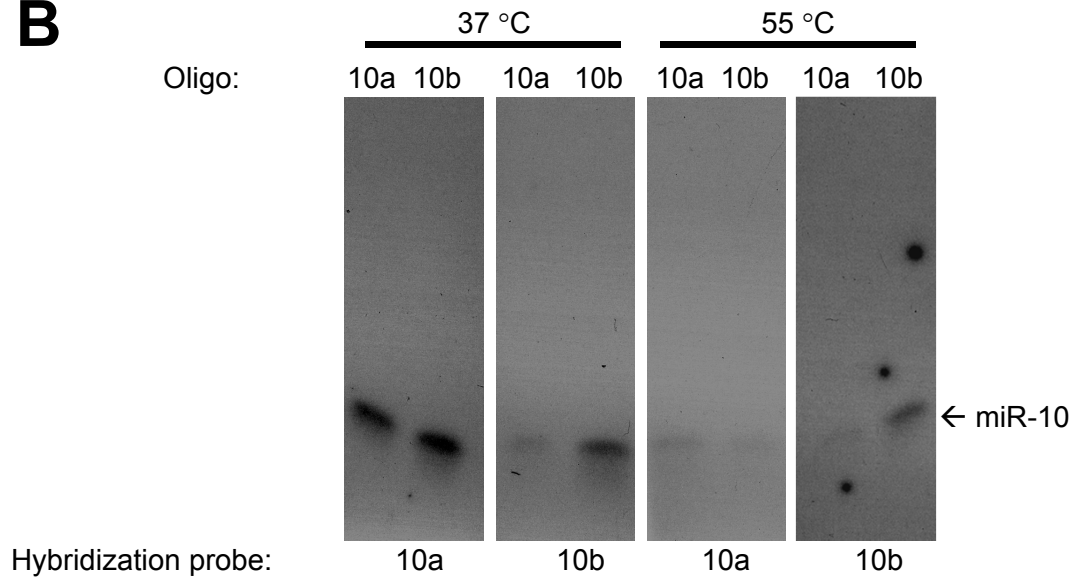


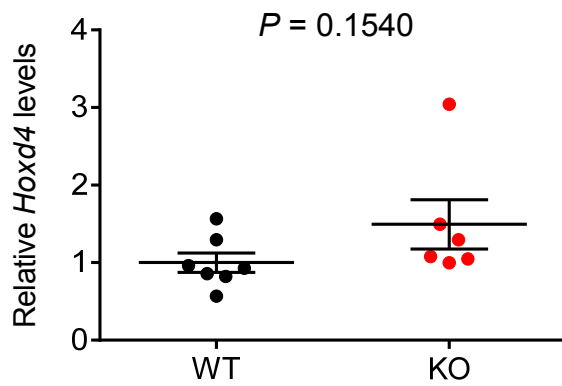
**A**

miR-10b UACCCUGUAGAA**A**CCGAAUUUGUG  
 miR-10a UACCCUGUAGAU**U**CCGAAUUUGUG

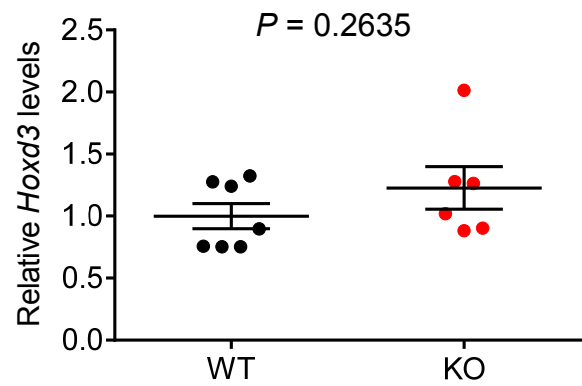
**B**



**C**



**D**

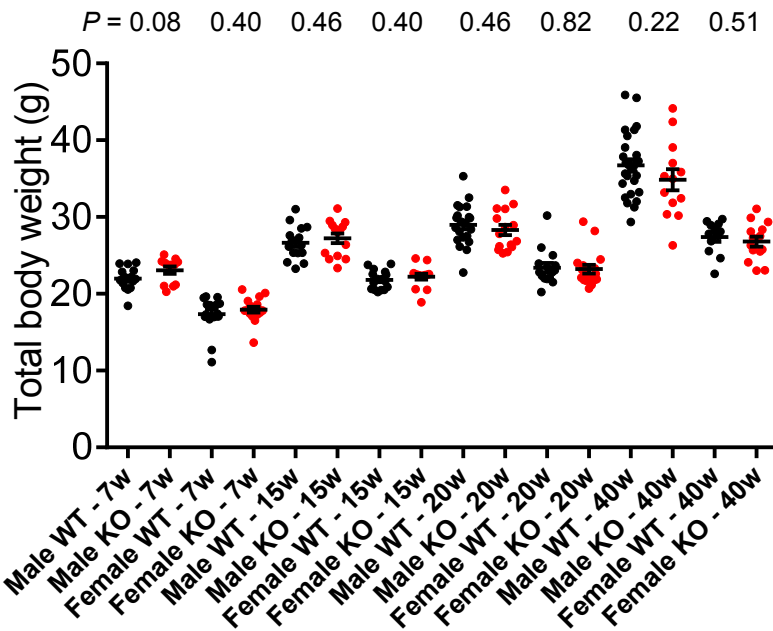


**A**

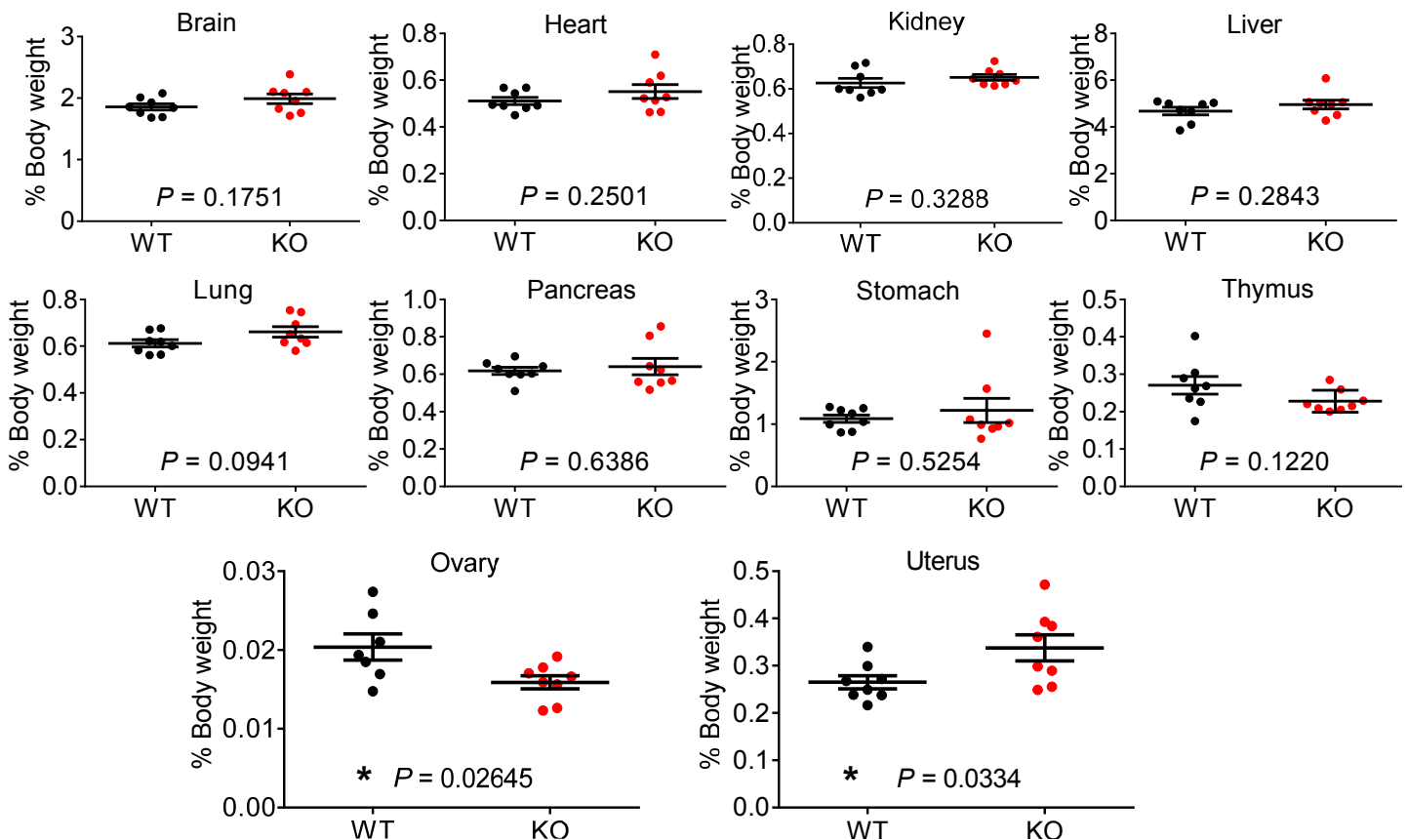
miR-10b genotype	# of offsprings	% Observed	% Expected
Wild-type	88	25.4	25
Heterozygous	177	51.2	50
Knockout	81	23.4	25
Total	346	100	100

$\chi^2 = 0.468$   
 $P = 0.791$

**B**

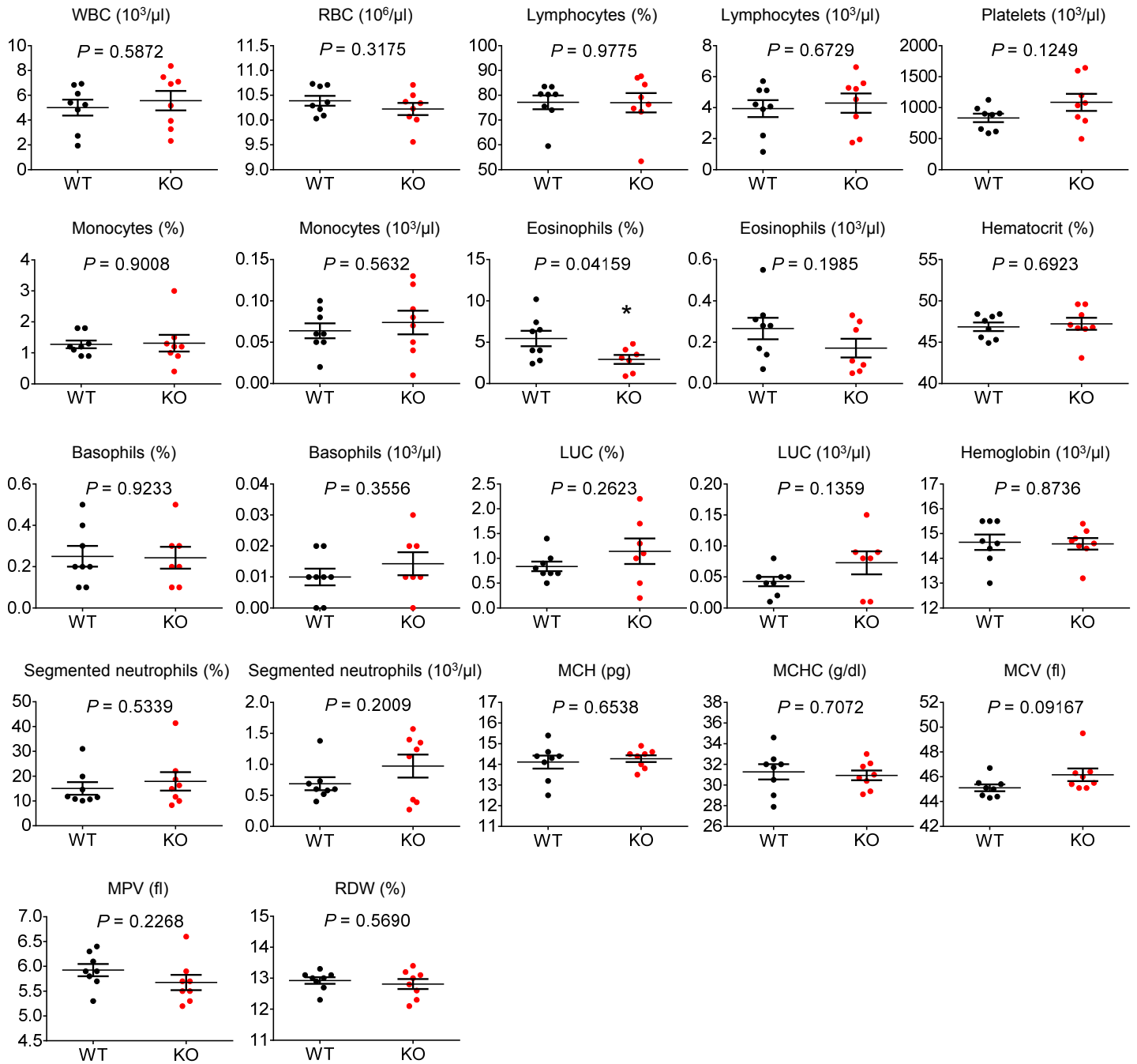


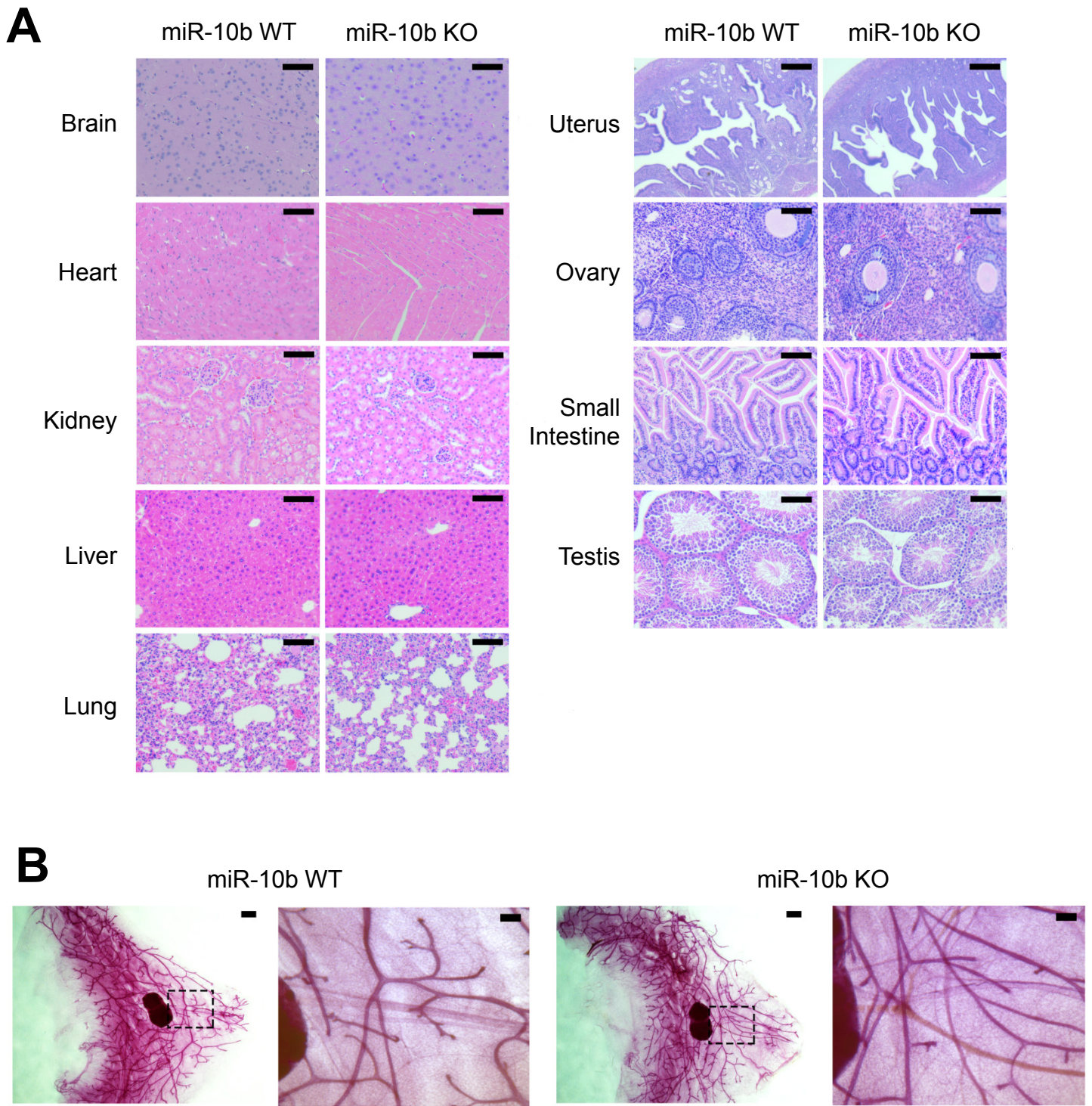
**C**



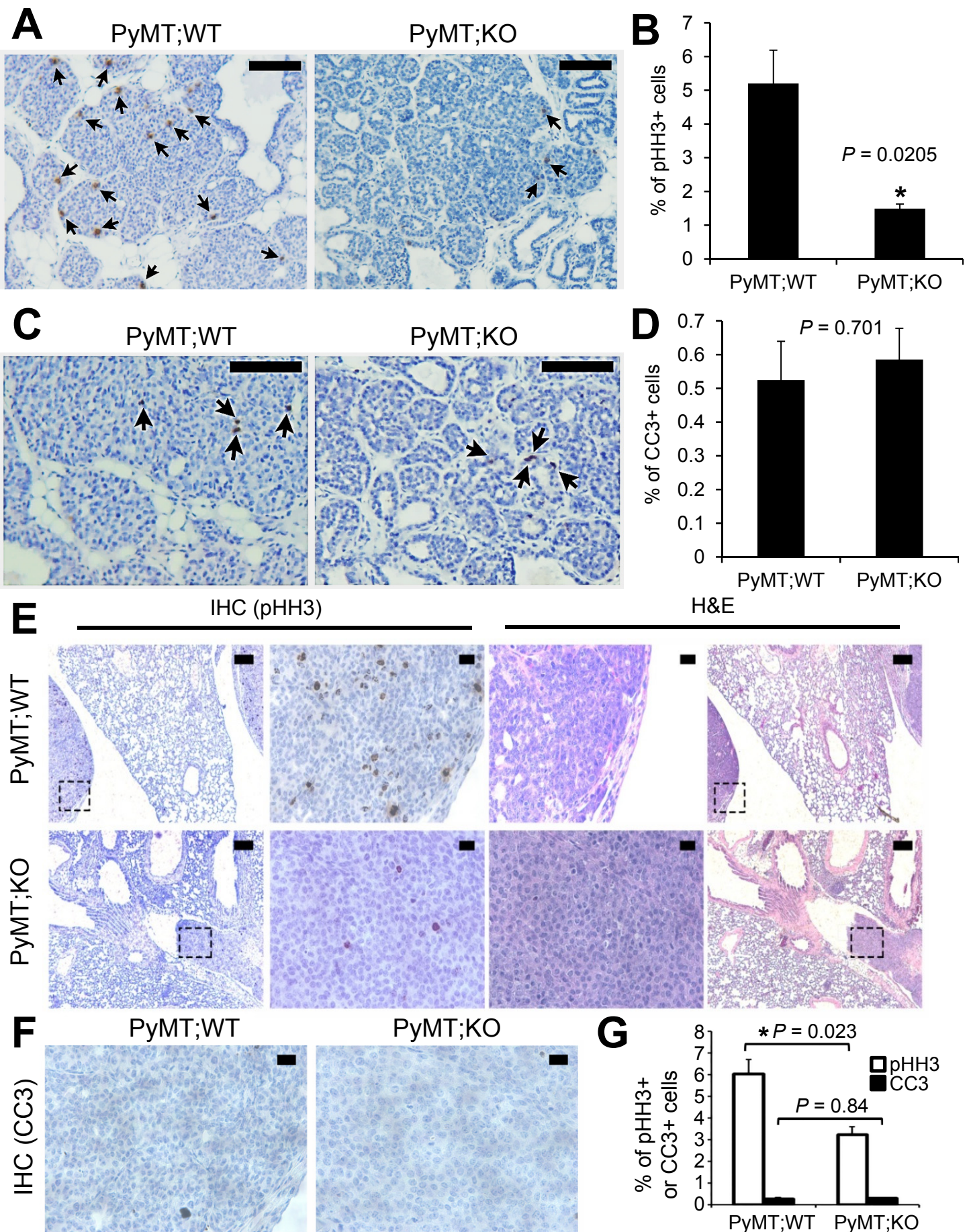


# Supplementary Figure S4



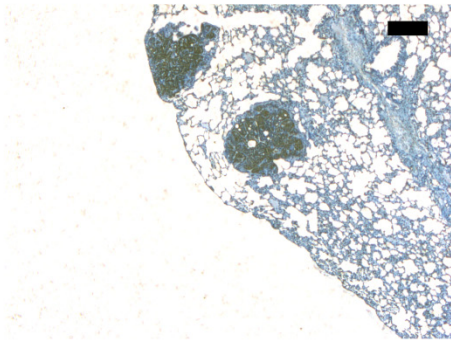


Supplementary Figure S6

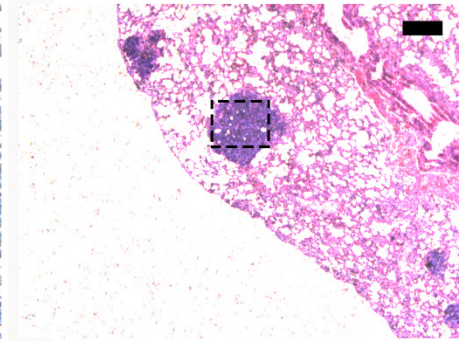


Supplementary Figure S7

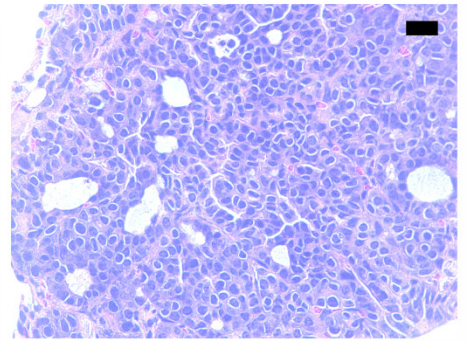
PyMT IHC (×25)



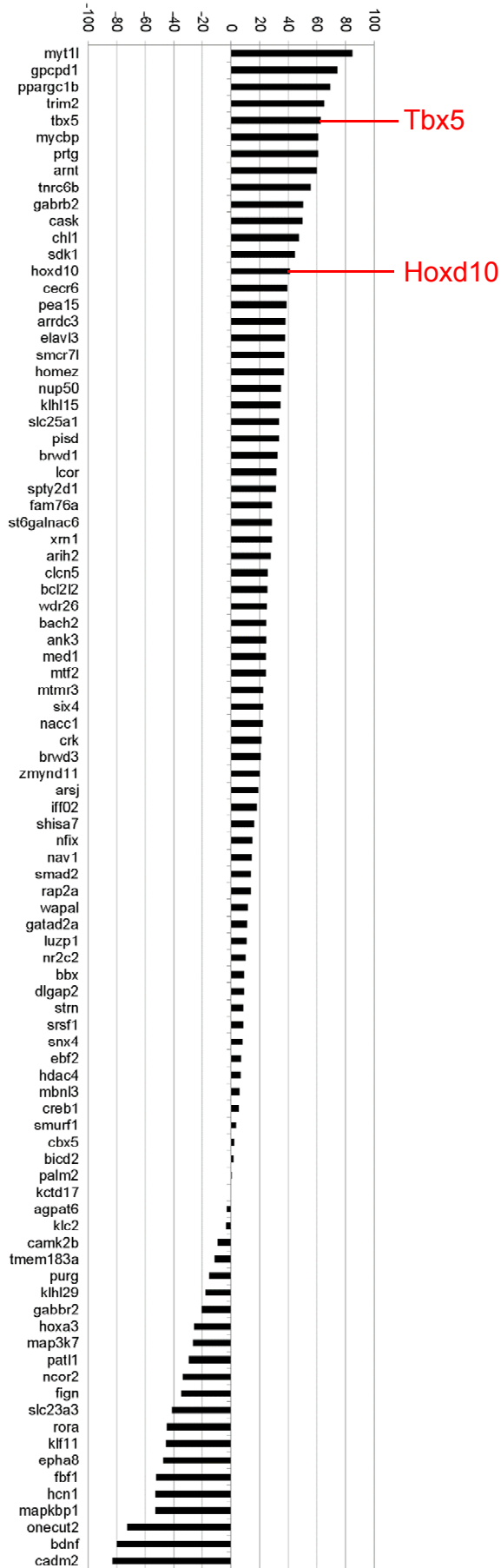
H&E (×25)



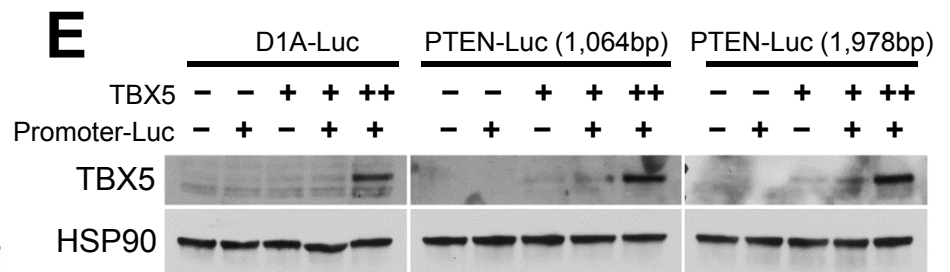
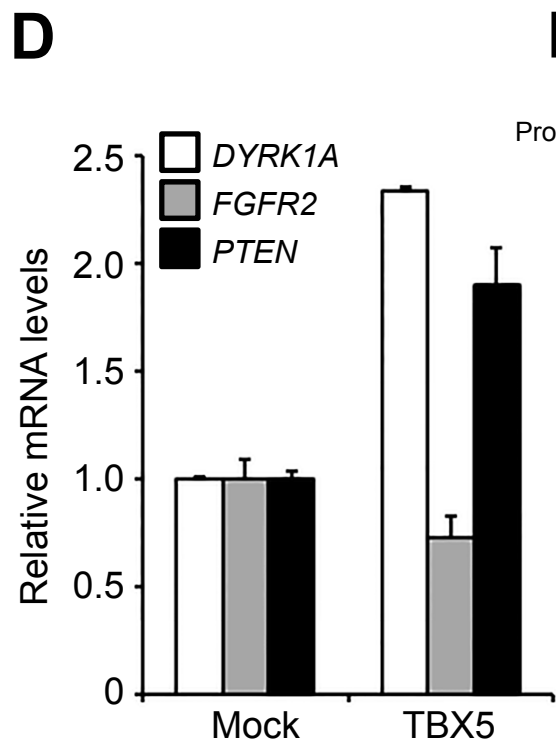
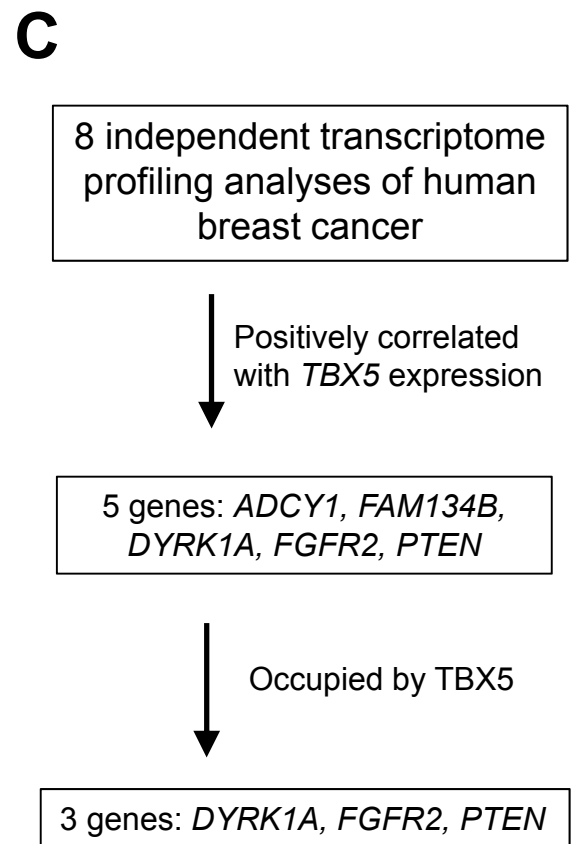
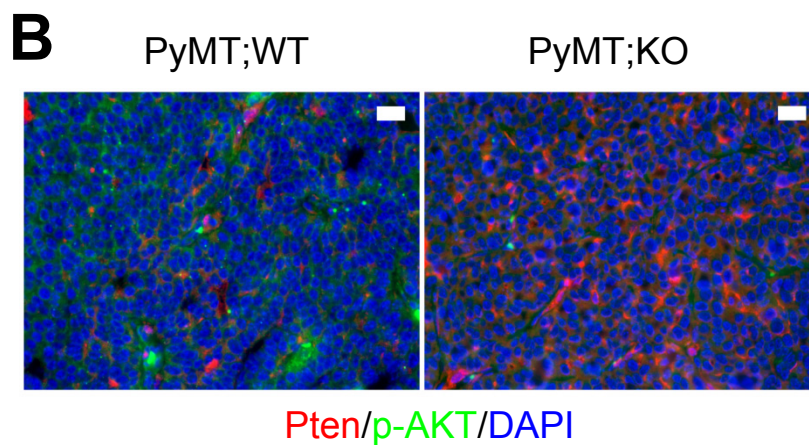
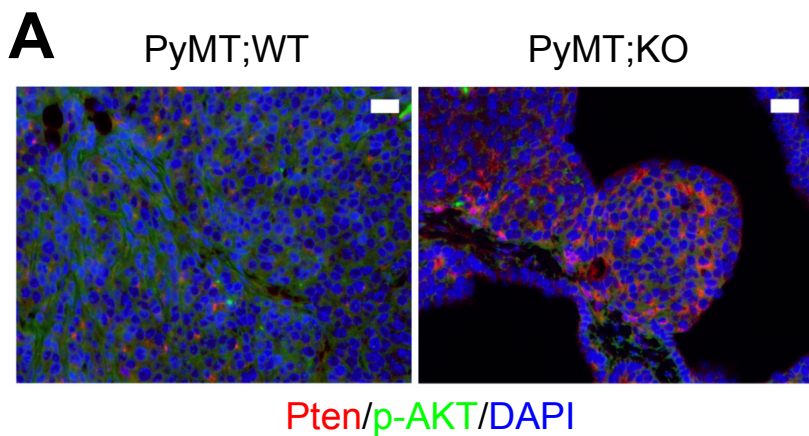
H&E (×200)



Supplementary Figure S8







Sources of the 8 datasets used in Panel C:

- Lancet. 2003 Aug 2;362(9381):362-9.
- Nat Med. 2005 May;11(5):481-3.
- J Biol Chem. 2009 Jul 24;284(30):20408-17.
- J Biol Chem. 2006 May 26;281(21):14563-72.
- J Clin Oncol. 2010 Sep 20;28(27):4111-9.
- Cancer Res. 2008 Jul 1;68(13):5405-13.
- Breast Cancer Res Treat. 2012 Apr;132(3):1049-62.
- J Pathol. 2010 Aug;221(4):452-61.

