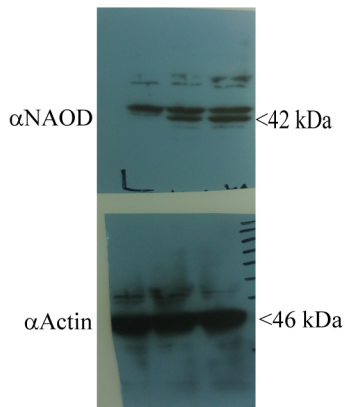


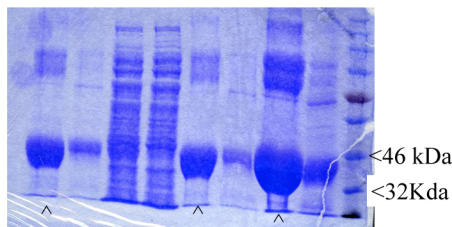
N-acetyl ornithine deacetylase is a moonlighting protein and is involved in the adaptation of *Entamoeba histolytica* to nitrosative stress

Preeti Shahi, Meirav Trebicz-Geffen, Shruti Nagaraja, Rivka Hertz, Sharon Alterzon-Baumel, Karen Methling, Michael Lalk, Mohit Mazumder, Gourinath Samudrala and Serge Ankri

A



B



C

