

Supplementary Figures

Figure S1. Plot of the CC variations along the 3 first principal components (PC). Each row depicts the variation along one PC. Centre images: Average CC over a group of 100 healthy controls, Left = Average CC - 3 standard deviations along on of the PCs (blue : resulting CC, red : streamlines starting from the average CC along the respective PC, Right = average CC + 3 standard deviations (blue: resulting CC, red: streamlines starting from the average CC along the respective PC).

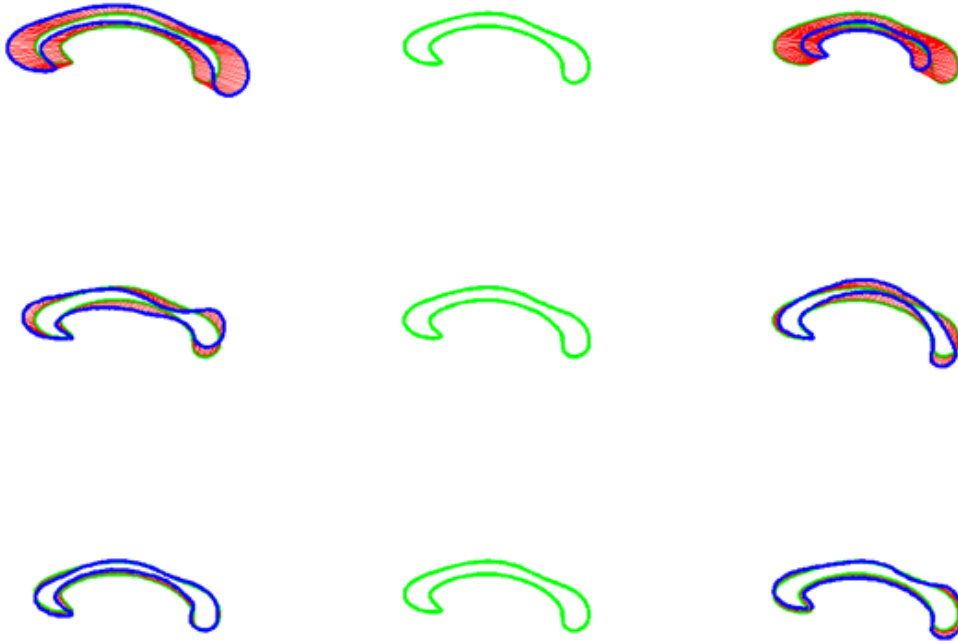


Figure S2. Calculation of the Corpus Callosum Index (introduced as a practical measure to analyse MR images by [Figueira et al., 2007]). First the longest possible axis between anterior and posterior part is determined (AP-axis). Secondly, in the middle of this axis and perpendicular to the AP axis, a midline is constructed. Both the AP-axis as the perpendicular midline are depicted in green. Next, the thicknesses are calculated (between the red stars). The corpus callosum index is defined as the sum of this thicknesses ($AA'+BB'+CC'$) divided by the length of the AP axis (AB').

