

Supplemental File 4: Destrieux Atlas

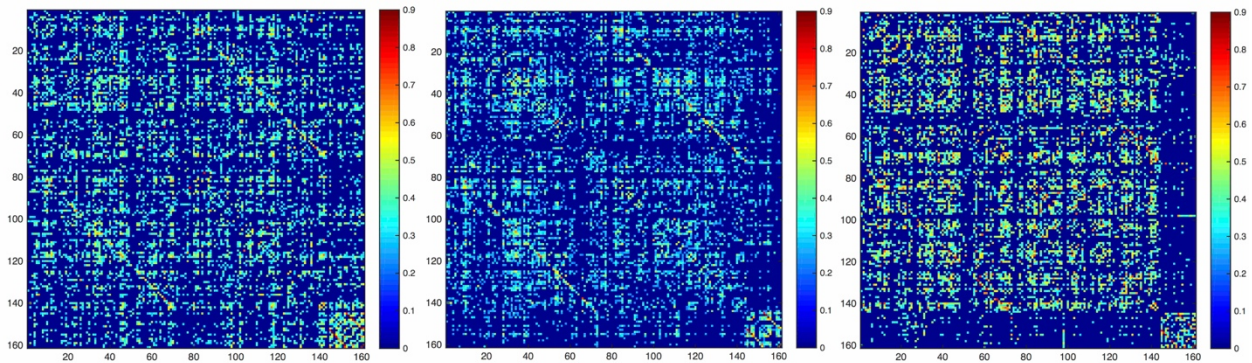


Figure S4.1: Unthresholded matrices for (A) controls, (B) epilepsy without anxiety, and (C) epilepsy with anxiety. The order of nodes is the same as in the Appendix A.

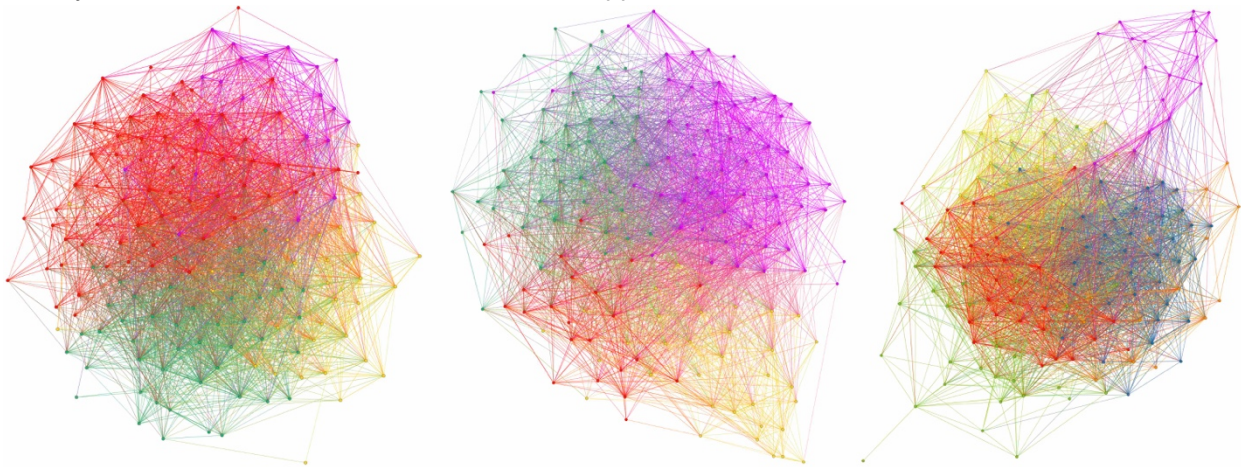


Figure S4.2: Community structure in controls (top), children with epilepsy without anxiety (middle), and children with epilepsy with anxiety (bottom). The spatial distribution of nodes was calculated using the force-atlas graph algorithm, where nodes that demonstrated stronger connections are located closer in space, while nodes with fewer connections tend to be farther in space. Nodes with a similar color belong to the same module. Calculated at a density of 26%.

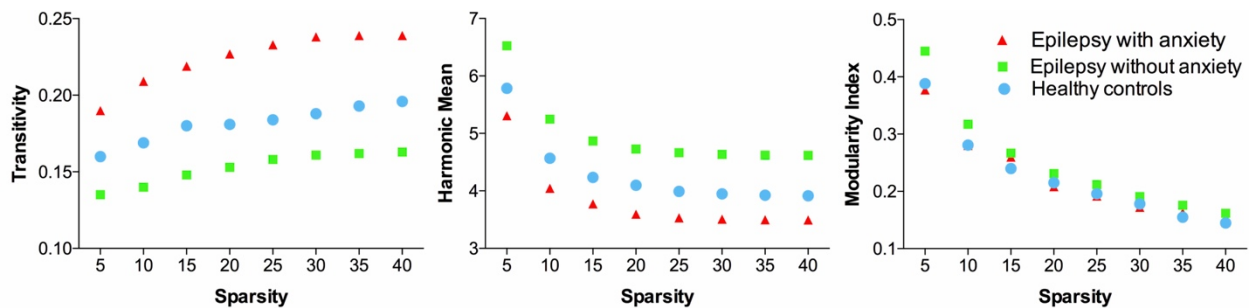


Figure S4.3: Transitivity (left), harmonic mean (middle), and modularity index (right). Participants with epilepsy and anxiety presented significantly higher global segregation and integration compared to both healthy controls and participants with epilepsy without anxiety.