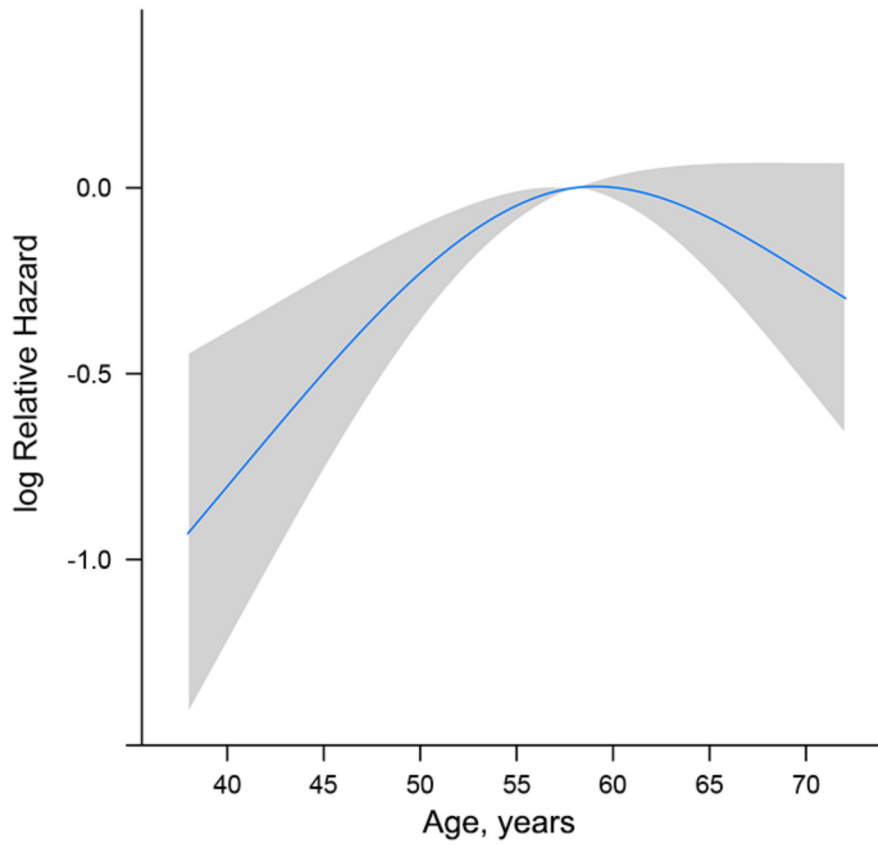
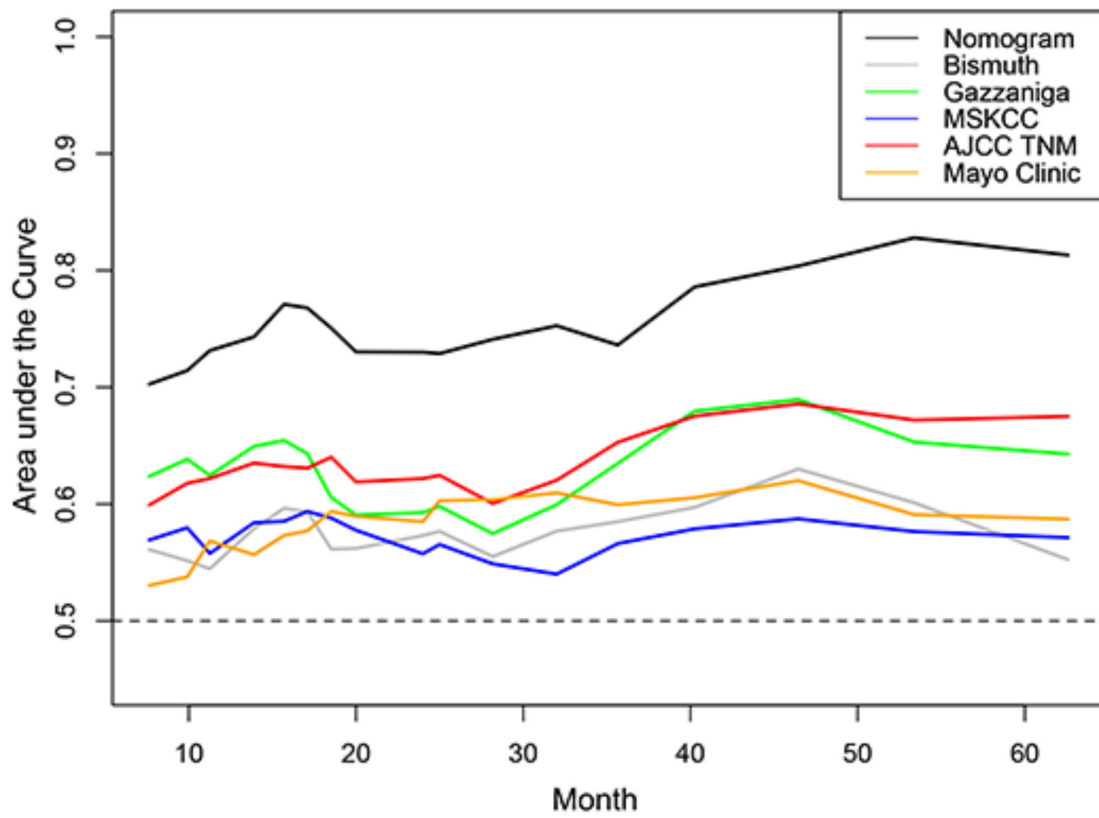


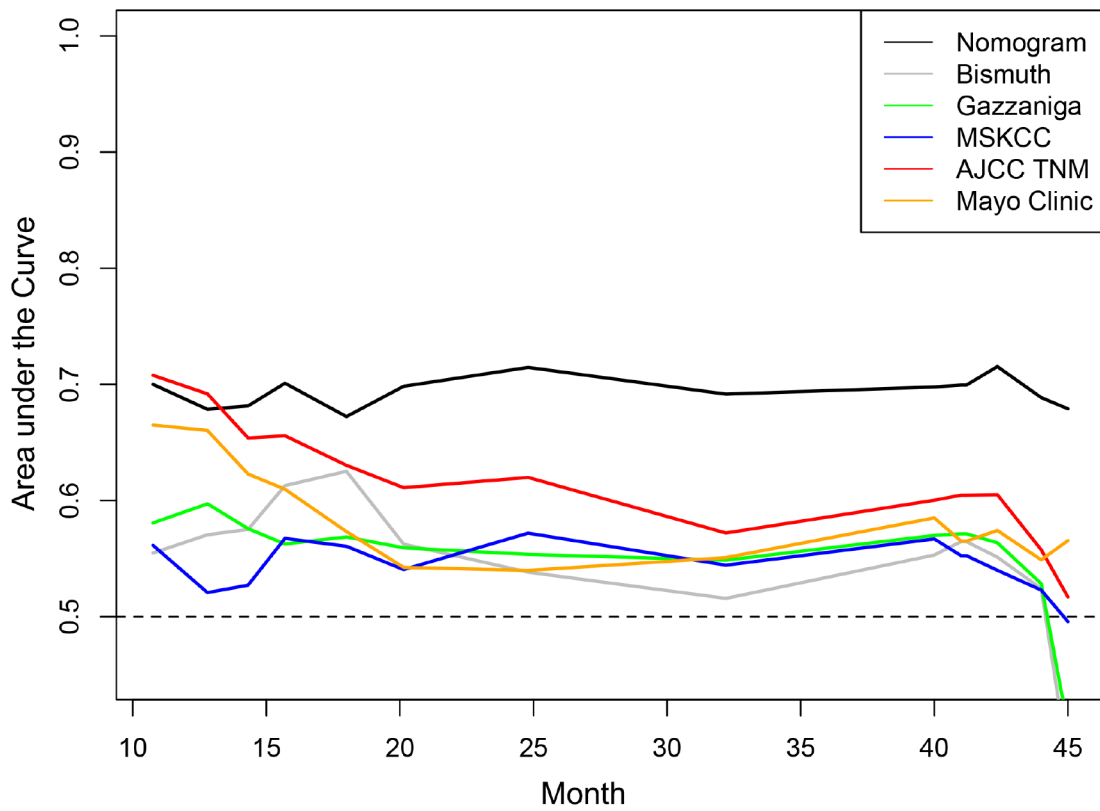
SUPPLEMENTARY FIGURES



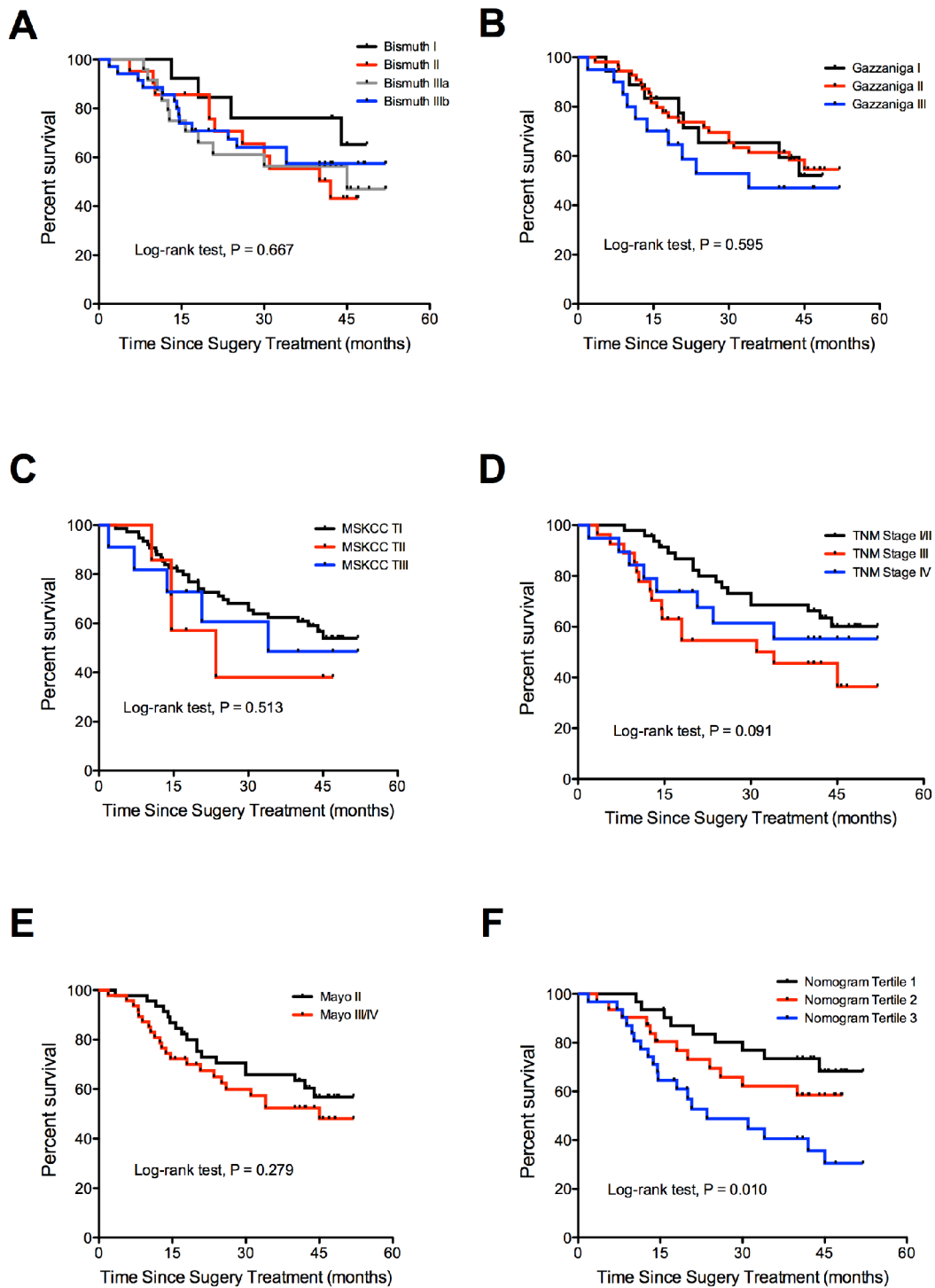
Supplementary Figure S1: Restricted cubic splines transformation of the continuous variant, age, in univariate analyses.



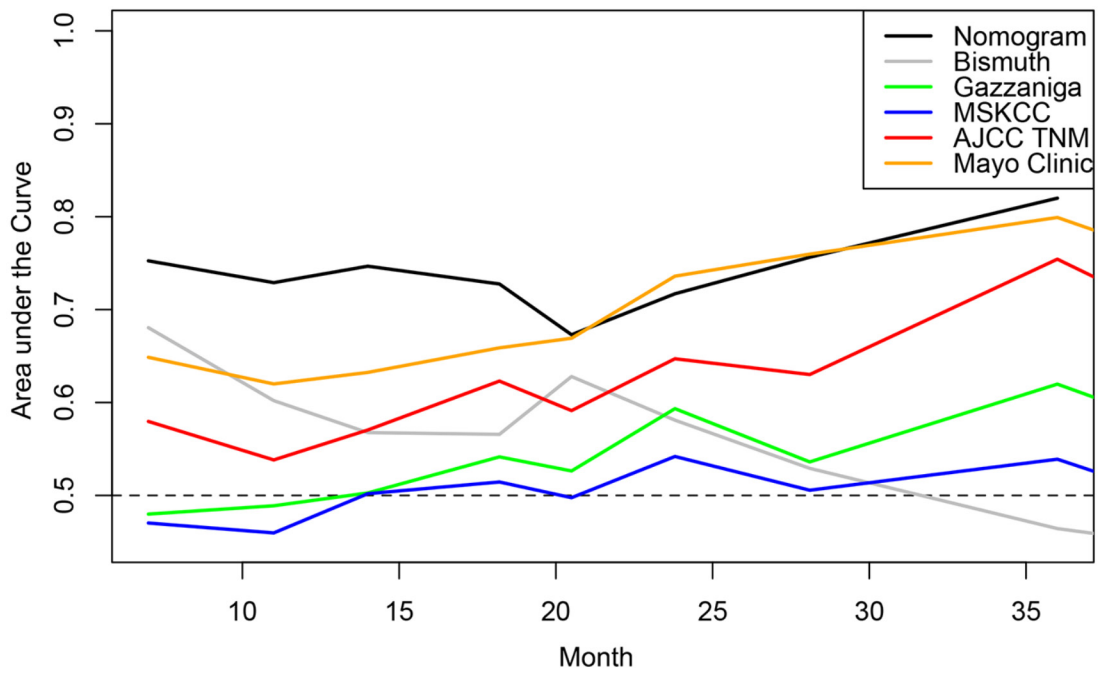
Supplementary Figure S2: Comparison of the time-dependent areas under the ROC curves of prediction by the nomogram and by the conventional staging systems in the primary cohort.



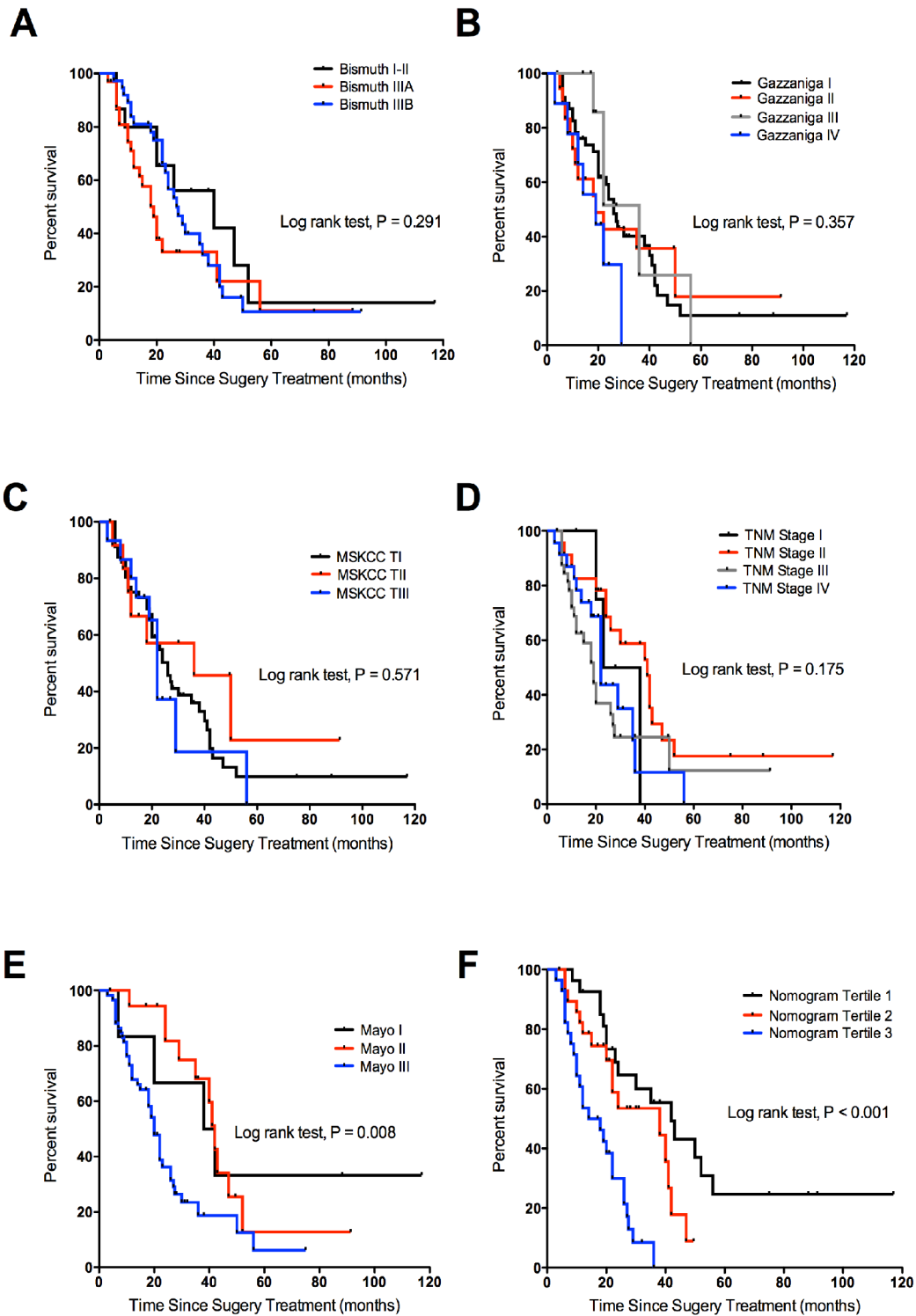
Supplementary Figure S3: Comparison of the time-dependent areas under the ROC curves of prediction by the nomogram and by the conventional staging systems in the internal validation cohort (N = 93).



Supplementary Figure S4: Kaplan-Meier survival curves for nomogram and the conventional staging systems in the internal validation cohort. (A. Bismuth-Corlette; B. Gazzaniga; C. MSKCC; D. AJCC TNM (seventh edition); E. Mayo Clinic; F. nomogram).



Supplementary Figure S5: Comparison of the time-dependent areas under the ROC curves of prediction by the nomogram and the conventional staging systems in the external validation cohort (N = 84).



Supplementary Figure S6: Kaplan-Meier survival curves for nomogram and the conventional staging systems in the external validation cohort. (A. Bismuth-Corlette; B. Gazzaniga; C. MSKCC; D. AJCC TNM (seventh edition); E. Mayo Clinic; F. nomogram).