

Fig. S1. HE stained section of the liver of a NSG female mouse injected with NMuMG cells cultured in the presence of AlCl_3 100 μM for 6 months. The mouse was from the same experiment described in Fig. 3. **B)** Cytokeratin 7 or **C)** Cytokeratin 19 immunohistochemistry on adjacent sections. Bar in A-C= 50 μm .

Fig. S2. NMuMG cells were seeded in 6 well plates at the density of 5'000 cells/well in triplicate, and cultured in the presence of the indicated concentrations of AlCl_3 , or of the same dilution of solvent (H_2O) alone for 7 days. The graph shows the number of cells \pm SEM for each experimental condition at the end of the assay.

Fig. S1

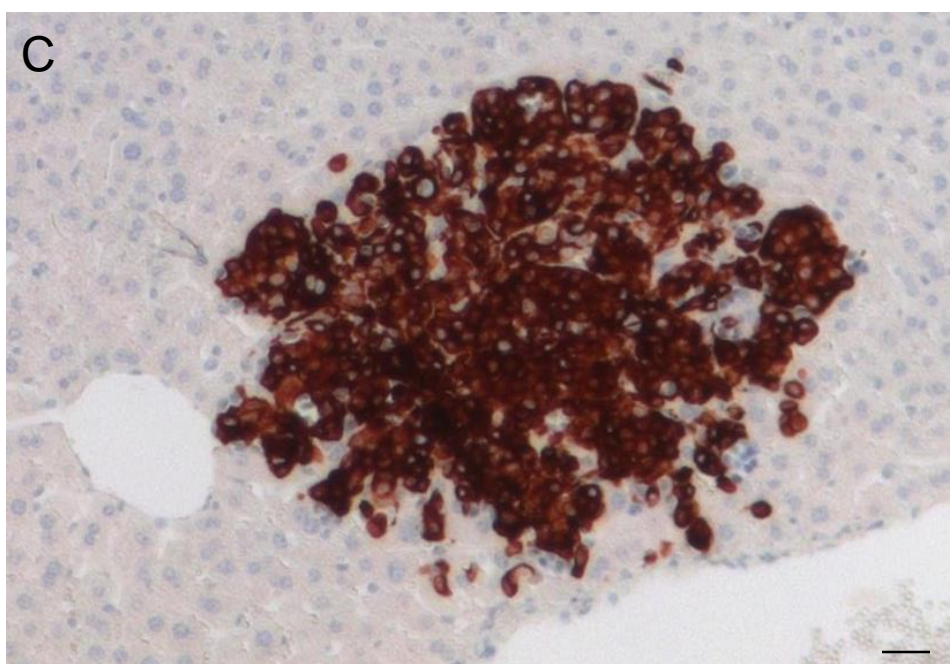
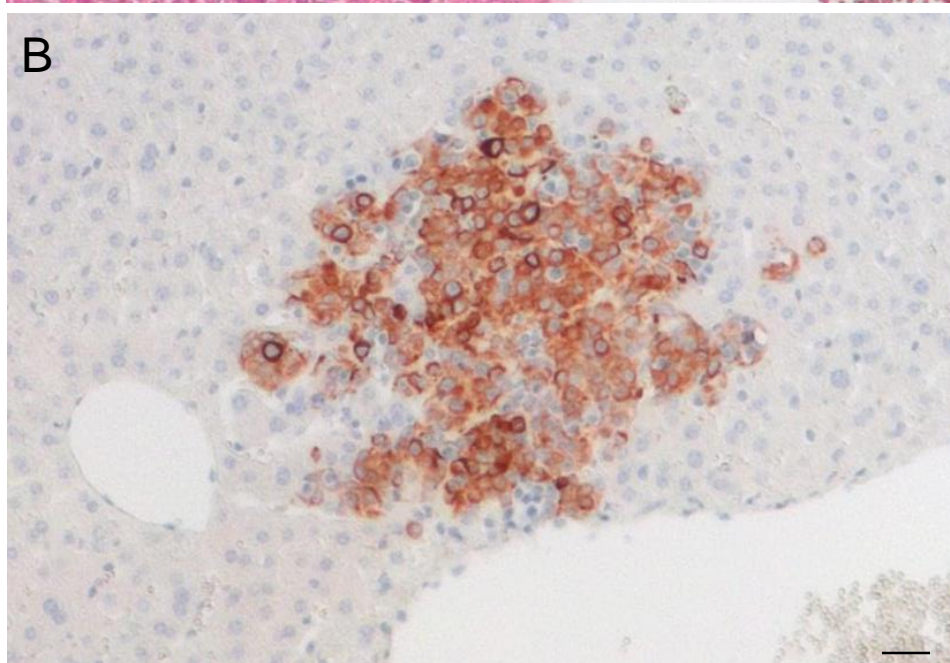
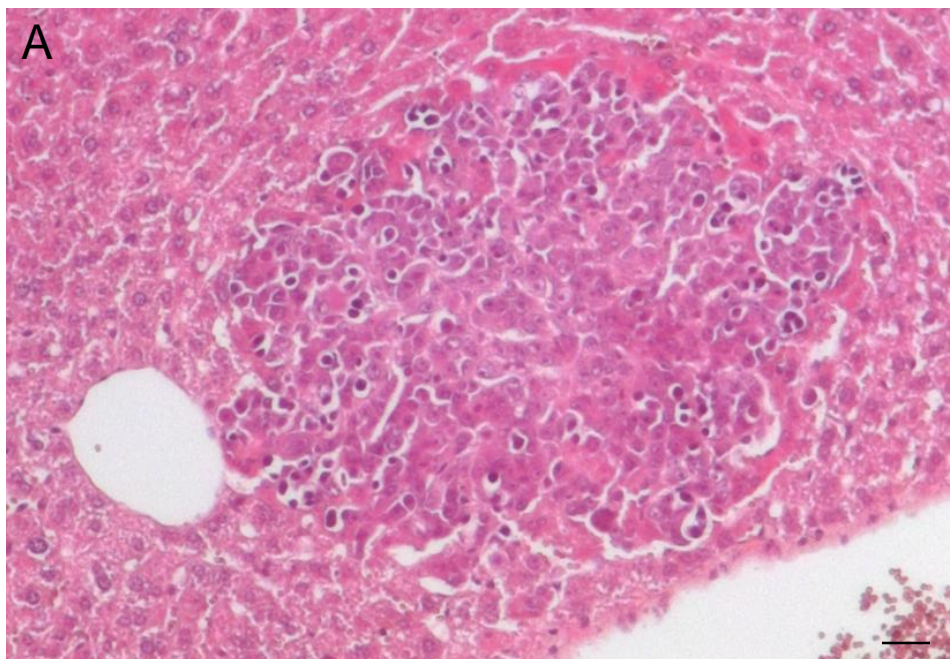


Fig. S2

