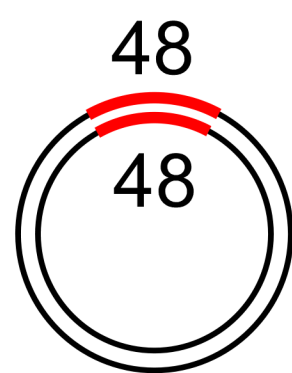
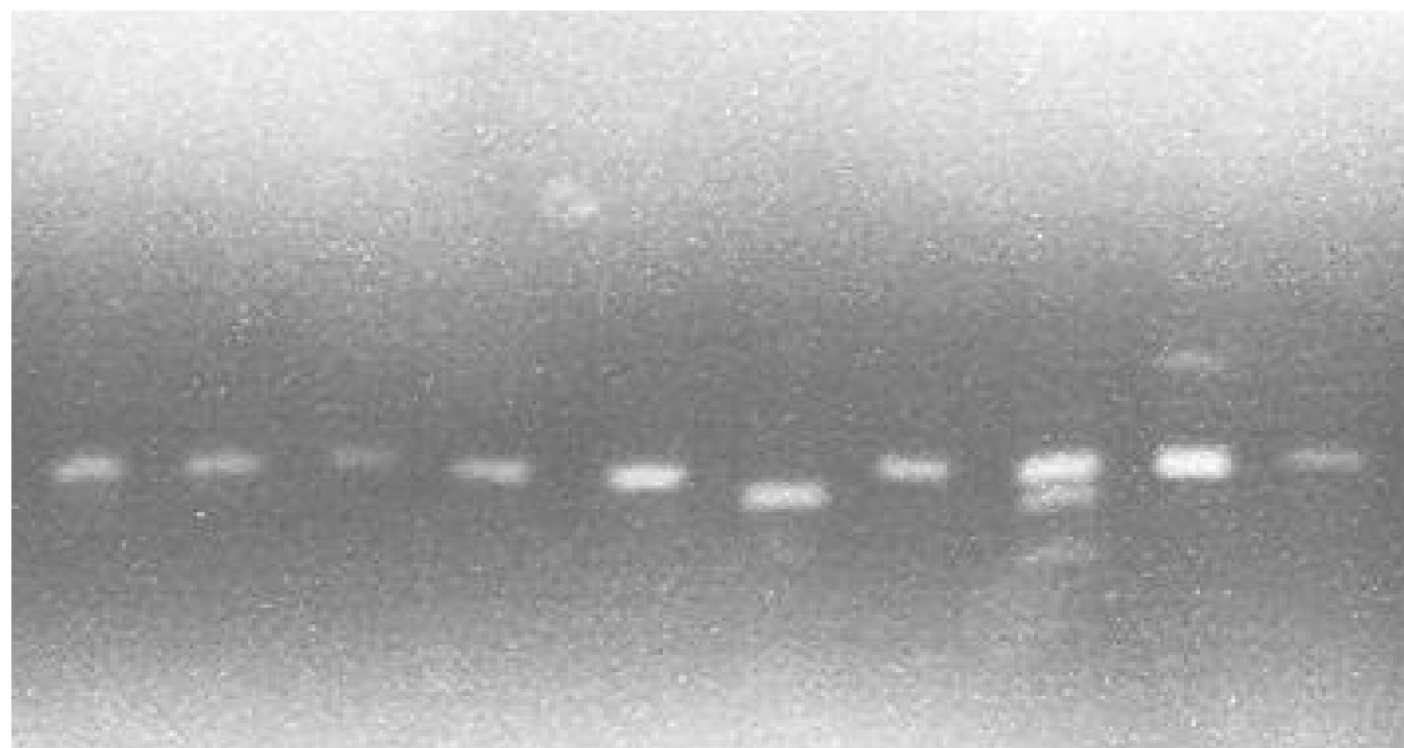


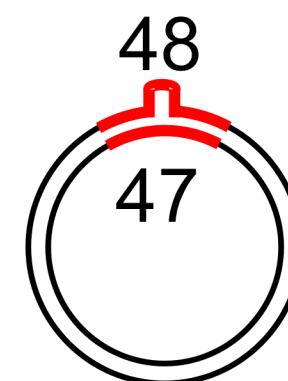
# Supplementary Figure 6



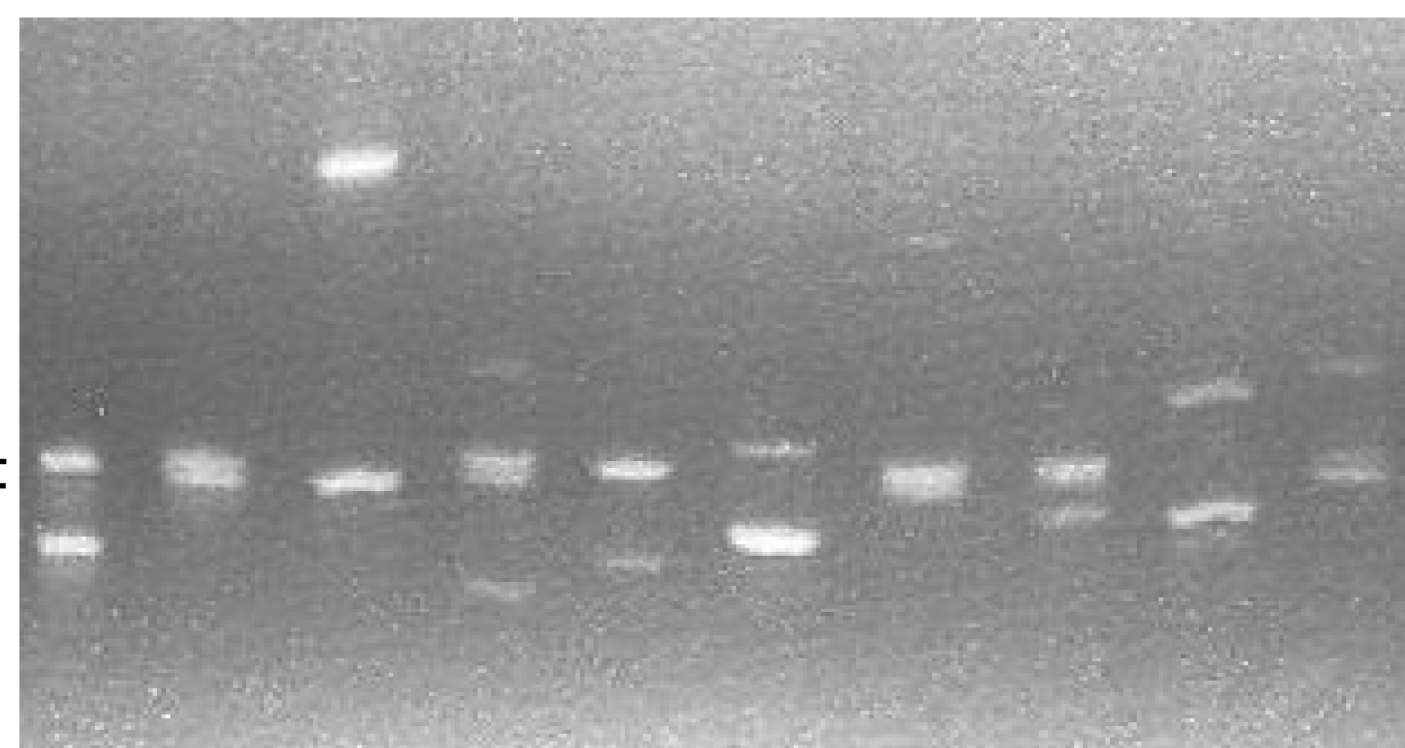
48/48 repeat homoduplex  
in DH5 $\alpha$



Types of products	%	# colonies
Start (48/48)	81.3	26
Start/Expansion	6.3	2
Start/Contraction	9.4	3
Expansion/Expansion	0	0
Expansion/Contraction	0	0
Contraction/Contraction	3	1
		Total 32



47/48 repeat heteroduplex  
in DH5 $\alpha$



Types of products	%	# colonies
Start/Start (47/48)	23.7	18
Start/Expansion	18.4	14
Start/Contraction	36.8	28
Expansion/Expansion	5.3	4
Expansion/Contraction	11.8	9
Contraction/Contraction	4	3
		Total 76

# of doublets in 48/48 (<20%) vs 47/48 (100% most not equal to input lengths) are significantly different ( $p= 2.7^{E-08}$ )