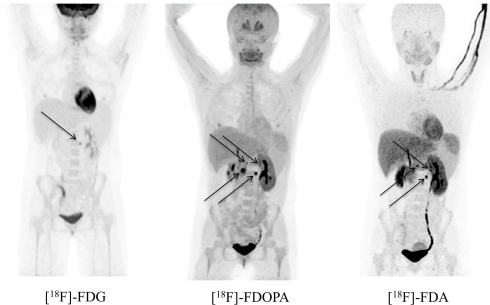


Supplementary Figure 2.



Functional imaging with  $[^{18}\text{F}]\text{-FDG}$ ,  $[^{18}\text{F}]\text{-FDOPA}$ , and  $[^{18}\text{F}]\text{-FDA}$  PET/CT, respectively, in patient No. 4. Four abdominal lesions are depicted using  $[^{18}\text{F}]\text{-FDOPA}$ , three lesions are visualized using  $[^{18}\text{F}]\text{-FDA}$ , but only one lesion with faint uptake is seen using  $[^{18}\text{F}]\text{-FDG}$ . All lesions are indicated with black arrows.