

Supplemental figures for:

**Superimposing Status Epilepticus on Neuron Subset-Specific PTEN
Haploinsufficient and Wild Type Mice Results in Long-term Changes in Behavior**

Gregory D. Smith¹, Jessika White², and Joaquin N. Lugo^{*1,2}

¹Institute of Biomedical Sciences, Baylor University, Waco, TX 76798, USA

²Department of Psychology and Neuroscience, Baylor University, Waco, TX 76798, USA

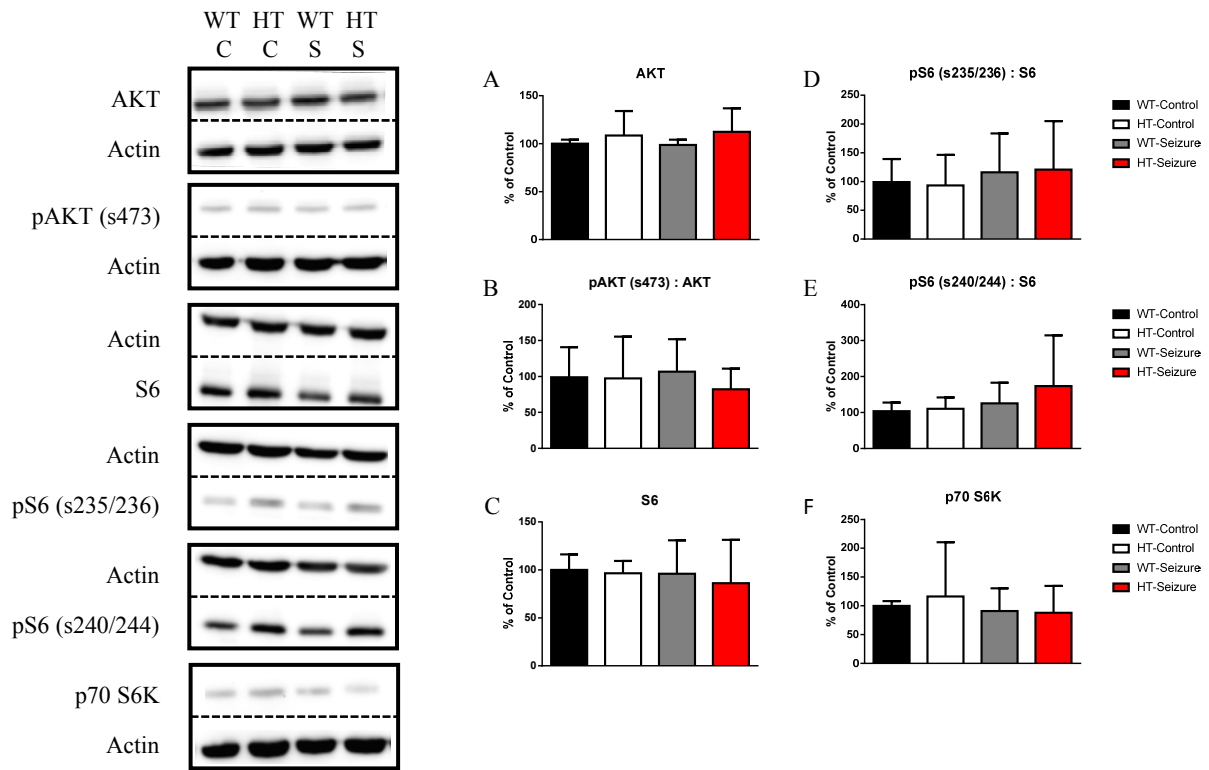


Figure S1. Western blotting data for hippocampal total homogenate samples.

Left: Image of the western blot. Right: Relative changes in protein concentration normalized to the loading constant and expressed as a percentage of the control group. All phosphorylated proteins are expressed as a percentage of phosphorylated protein to total protein concentration. **(A)** AKT. **(B)** pAKT (s473). **(C)** S6. **(D)** pS6 (s235/236). **(E)** pS6 (s240/244). **(F)** p70 S6K. WT-control n=8, HT-control n=8, WT-Seizure n=10, HT-Seizure n=10.

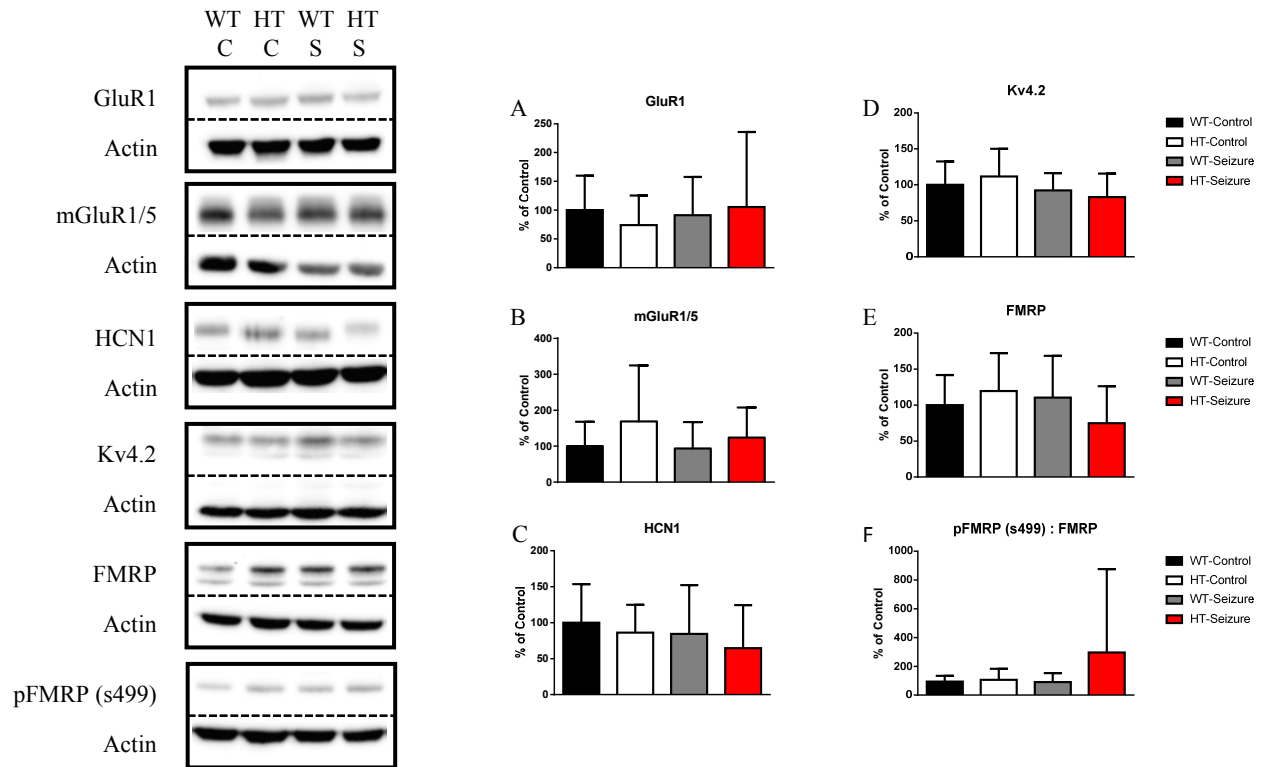


Figure S2. Western blotting data for hippocampal synaptosome samples. Left: Image of the western blot. Right: Relative changes in protein concentration normalized to the loading constant and expressed as a percentage of the control group. All phosphorylated proteins are expressed as a percentage of phosphorylated protein to total protein concentration. **(A)** GluR1. **(B)** mGluR1/5. **(C)** HCN1. **(D)** Kv4.2. **(E)** FMRP. **(F)** pFMRP (s499). WT-control n=8, HT-control n=8, WT-Seizure n=10, HT-Seizure n=10.

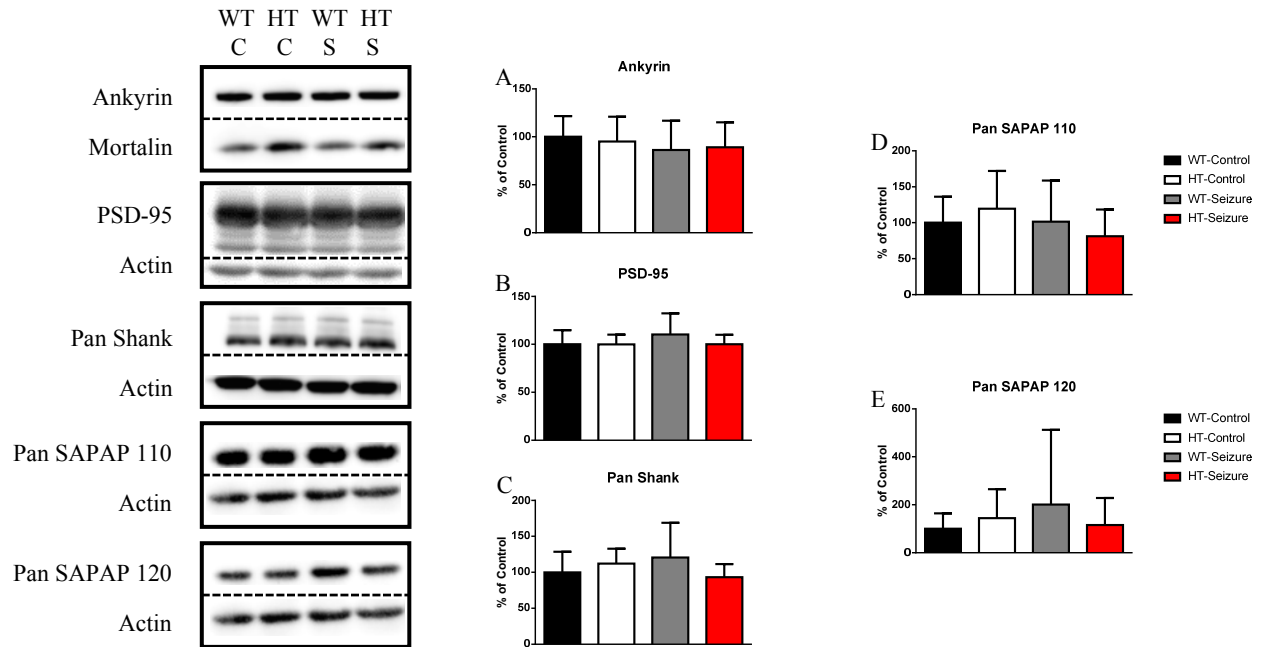


Figure S3. Western blotting data for hippocampal synaptosome samples. Left: Image of the western blot. Right: Relative changes in protein concentration normalized to the loading constant and expressed as a percentage of the control group. **(A)** Ankyrin. **(B)** PSD-95. **(C)** Pan Shank. **(D)** Pan SAPAP 110 kDa. **(E)** Pan SAPAP 120. WT-control n=8, HT-control n=8, WT-Seizure n=10, HT-Seizure n=10.