

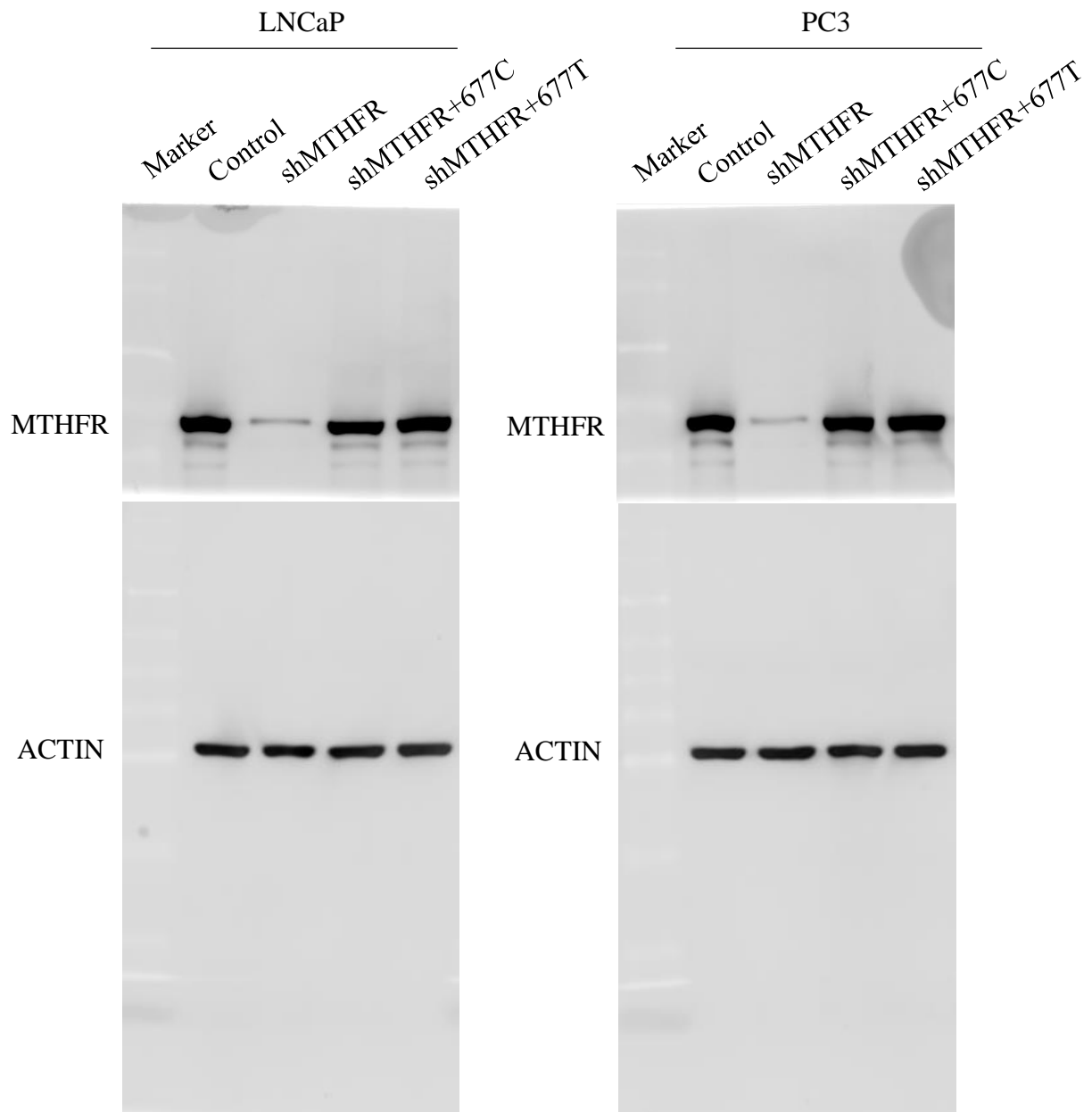
Supplementary file

***MTHFR* c.677C>T Inhibits Cell Proliferation and Decreases Prostate Cancer Susceptibility in the Han Chinese Population in Shanghai**

Running head: *MTHFR* c.677C>T decreases PCa susceptibility

Jun-Long Wu^{1,5,†}, Shu-Xian Zhou^{2,3,†}, Rui Zhao^{2,3}, Xuan Zhang², Kun Chang^{1,5}, Cheng-Yuan Gu^{1,5}, Hua-Lei Gan^{4,5}, Bo Dai^{1,5}, Yao Zhu^{1,5}, Hai-Liang Zhang^{1,5}, Guo-Hai Shi^{1,5}, Yuan-Yuan Qu^{1,5*}, Jian-Yuan Zhao^{2,*}, Ding-Wei Ye^{1,5*}

[†]These authors contributed equally to this work.



Supplementary Figure 1. The full-length blots for knockdown efficiency of *shMTHFR* and protein expression of MTHFR after restoration of wild-type or mutant *MTHFR* gene measured by western blot.