

Supplement II: Detailed SPES results

*ISLES 2015 - A public evaluation benchmark for ischemic stroke
lesion segmentation from multispectral MRI*

Oskar Maier et al.

February 12, 2016

This document list the detailed result graphs for all team over all testing dataset cases. Failed cases are denoted by missing data points. Please refer to the online version for zoomable graphs.

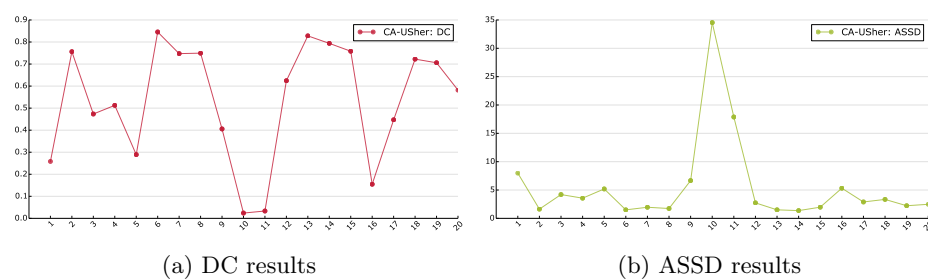


Figure 1: Results for team CA-USher on the SPES dataset over all cases.

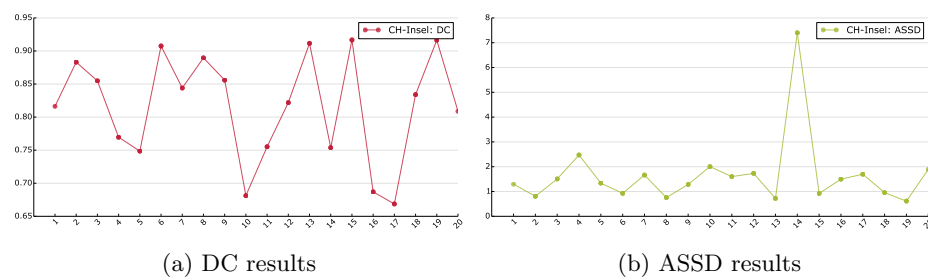


Figure 2: Results for team CH-Insel on the SPES dataset over all cases.

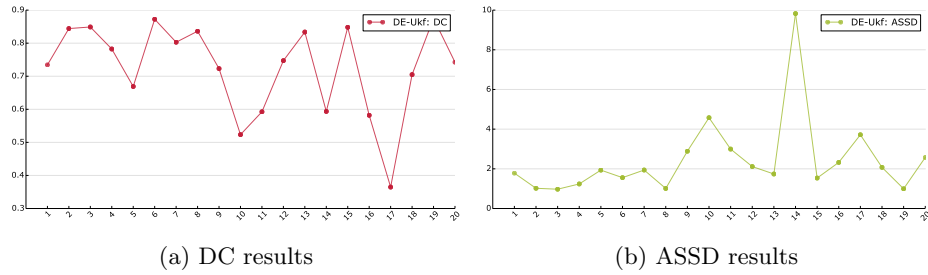


Figure 3: Results for team DE-Ukf on the SPES dataset over all cases.

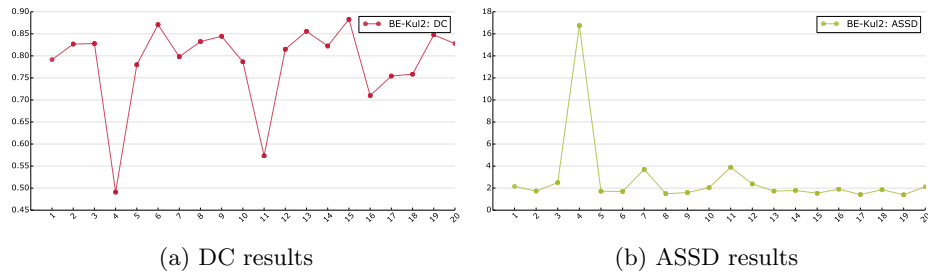


Figure 4: Results for team BE-Kul2 on the SPES dataset over all cases.

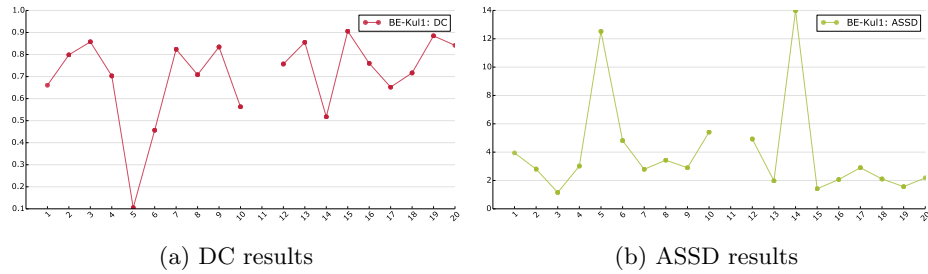


Figure 5: Results for team BE-Kul1 on the SPES dataset over all cases.

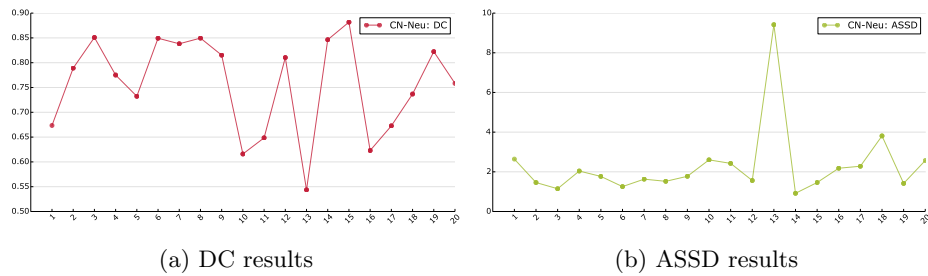


Figure 6: Results for team CN-Neu on the SPES dataset over all cases.

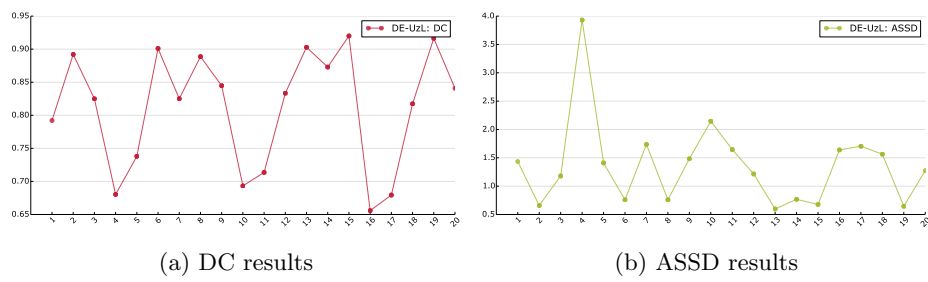


Figure 7: Results for team DE-UzL on the SPES dataset over all cases.