

Supplement IV: SPES summary results

*ISLES 2015 - A public evaluation benchmark for ischemic stroke
lesion segmentation from multispectral MRI*

Oskar Maier et al.

February 12, 2016

This document list case-wise box plot summarizing the results over all participating teams. Failed cases are excluded from the computation of ASSD and HD values, in which case the number of considered teams is denoted by a small number above the box. Please refer to the online version for zoomable graphs.

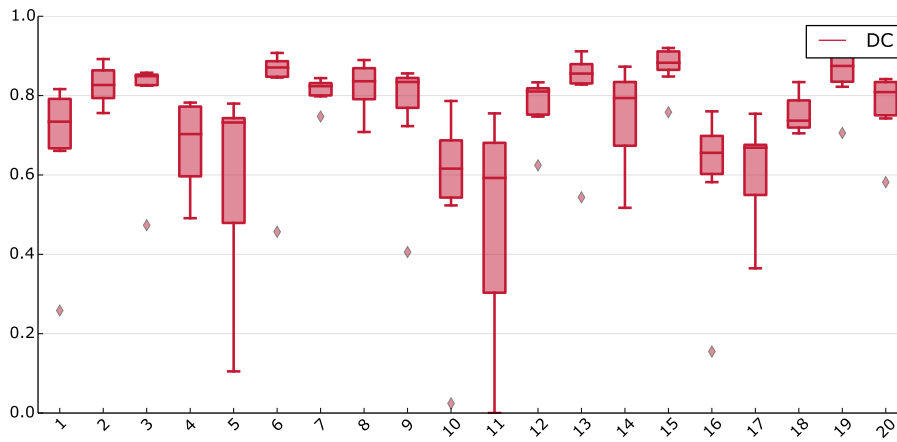


Figure 1: Box plots of DC results over all teams for all testing cases.

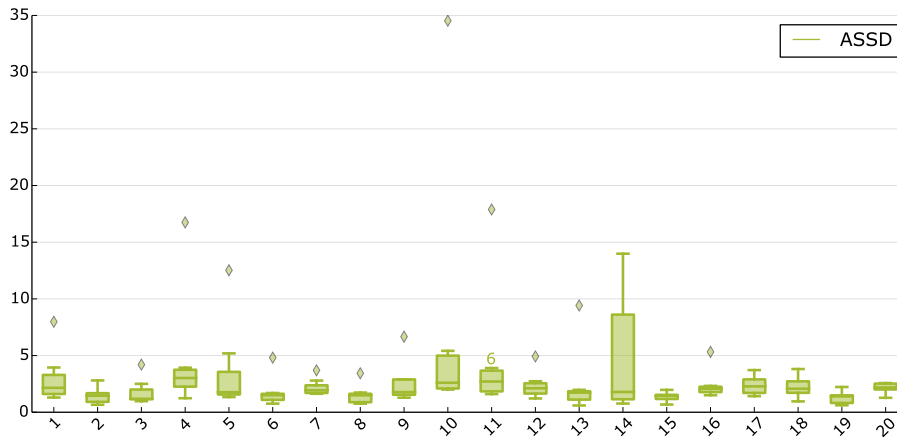


Figure 2: Box plots of ASDD results over all teams for all testing cases.

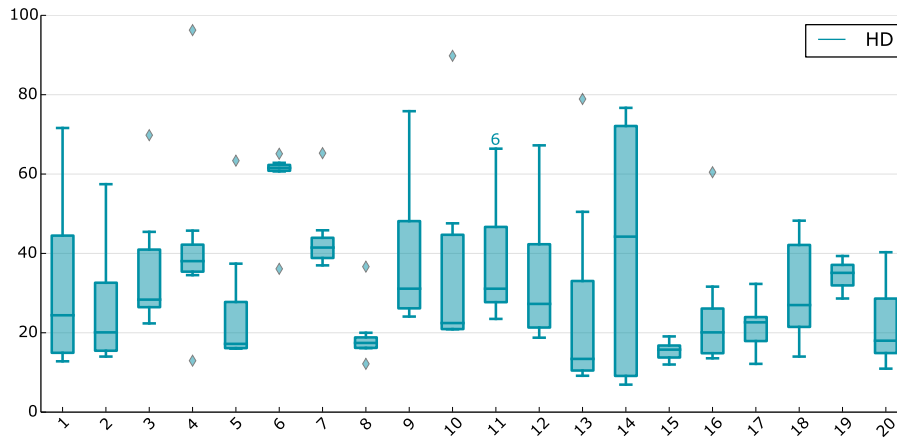


Figure 3: Box plots of HD results over all teams for all testing cases.

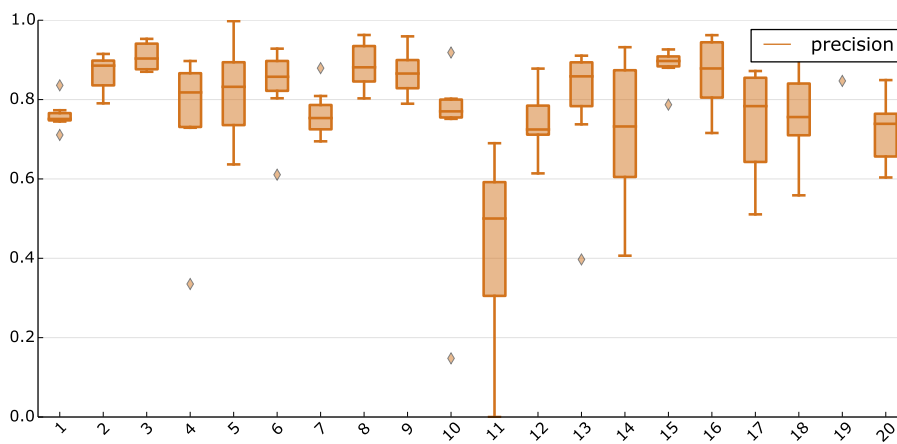


Figure 4: Box plots of precision results over all teams for all testing cases.

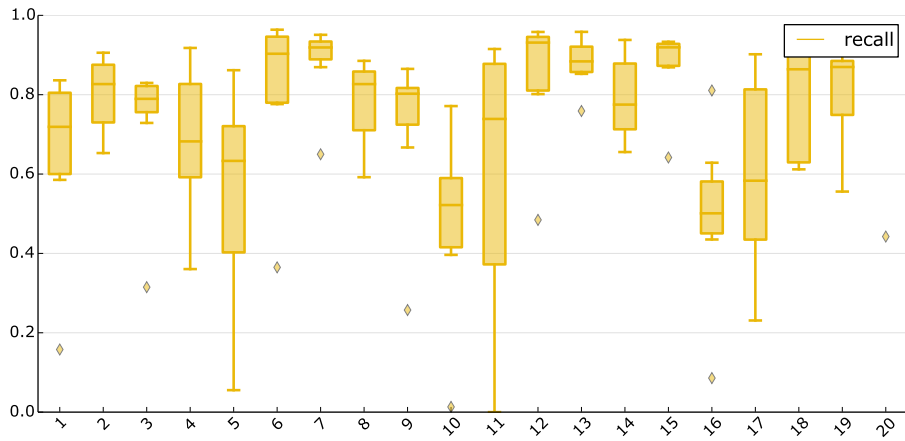


Figure 5: Box plots of recall results over all teams for all testing cases.