

Supplemental figure legends and figures

Depression-like phenotype by deletion of $\alpha 7$ nicotinic acetylcholine receptor: Role of BDNF-TrkB in nucleus accumbens

Ji-chun Zhang, Wei Yao, Qian Ren, Chun Yang, Chao Dong, Min Ma,
Jin Wu and Kenji Hashimoto

Division of Clinical Neuroscience, Chiba University Center for Forensic Mental Health, Chiba 260-8670, Japan

Correspondence: Kenji Hashimoto, Division of Clinical Neuroscience, Chiba University Center for Forensic Mental Health, 1-8-1 Inohana, Chiba 260-8670, JAPAN.

Supplemental figure legends

Supplemental figure 1: The western blot of proteins in the selected brain regions from $\alpha 7$ nAChR WT and KO mice.

(a): The blots for proBDNF, BDNF and actin.

(b): The blots for p-TrkB and TrkB.

(c): The blots for GluA1, PSD-95 and actin.

The red line marked blots were selected in the figure 2.

Supplemental figure 2: The western blot of proteins in the NAc from $\alpha 7$ nAChR WT and KO mice after ANA-12 injection.

(a): The blots for proBDNF, BDNF and actin in the NAc after i.p. injection of ANA-12.

(b): The blots for p-TrkB, TrkB and actin in the NAc after i.p. injection of ANA-12.

(c): The blots for GluA1, PSD-95 and actin in the NAc after i.p. injection of ANA-12.

(d): The blots for proBDNF, BDNF, and actin in the NAc after bilateral injection of ANA-12 into the NAc.

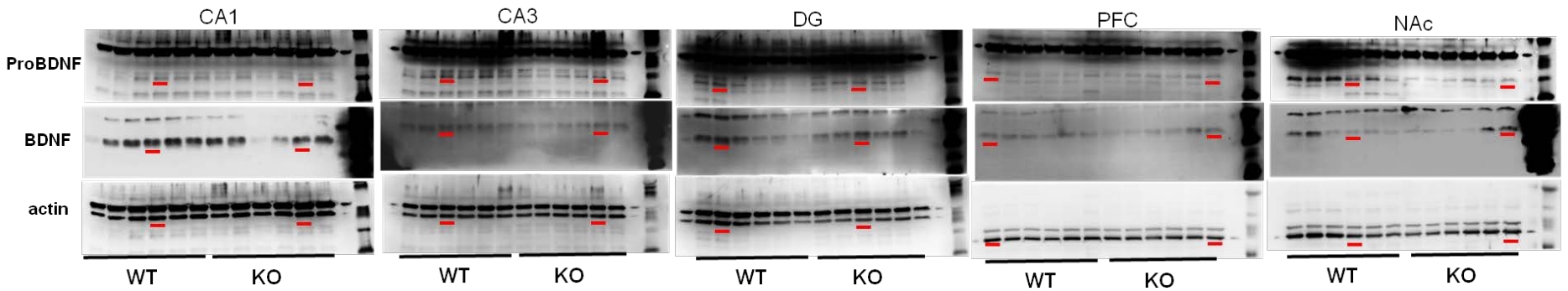
(e): The blots for p-TrkB, TrkB and actin in the NAc after bilateral injection of ANA-12 into the NAc.

(f): The blots for GluA1, PSD-95 and actin in the NAc after bilateral injection of ANA-12 into the NAc.

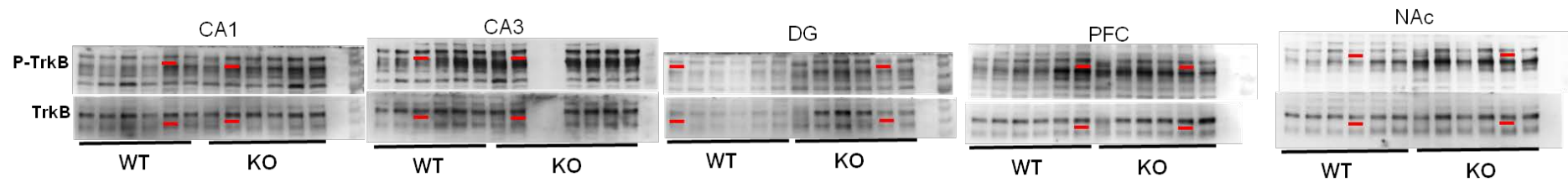
The red line marked blots were selected in the figure 4 and figure 6.

Supplemental figure 1

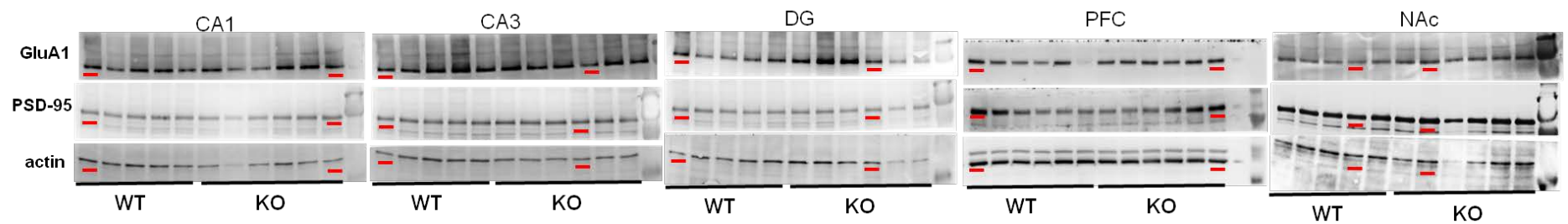
a. For figure 2a and b



b. For figure 2c

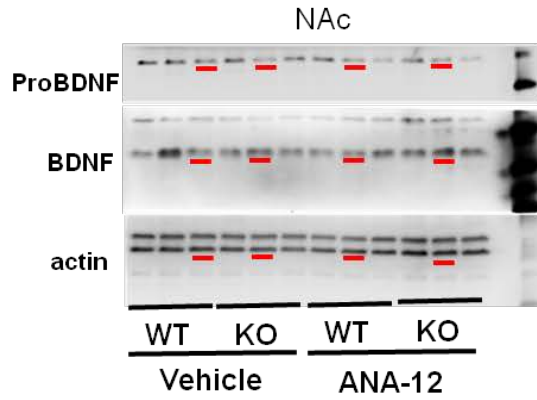


c. For figure 2d and e

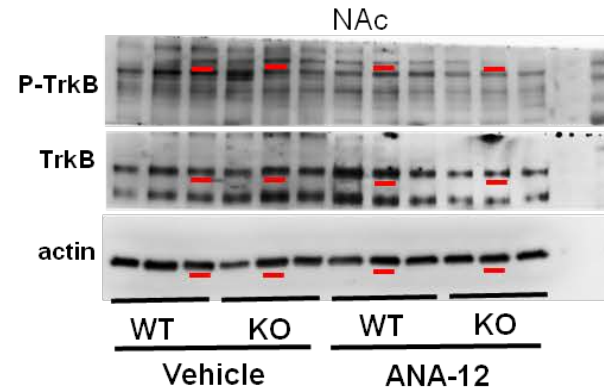


Supplemental figure 2

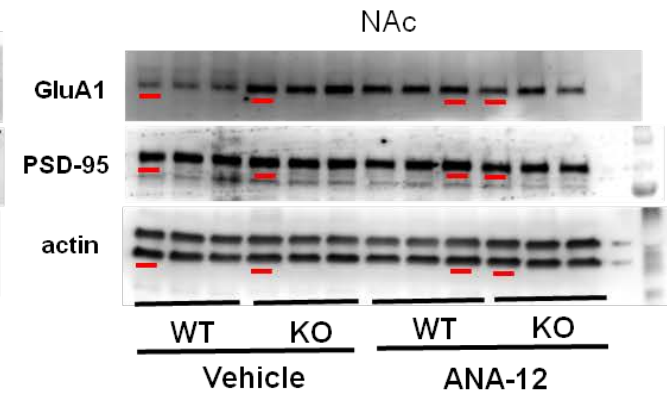
a. For figure 4e



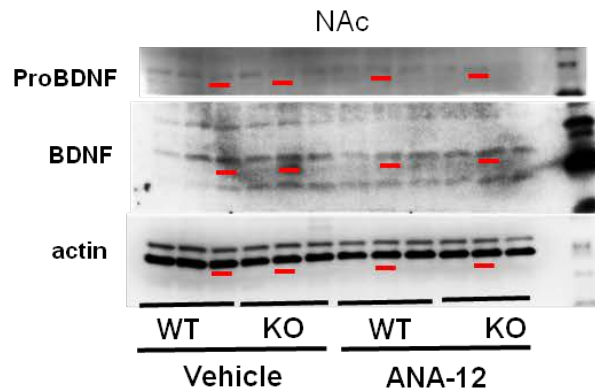
b. For figure 4g



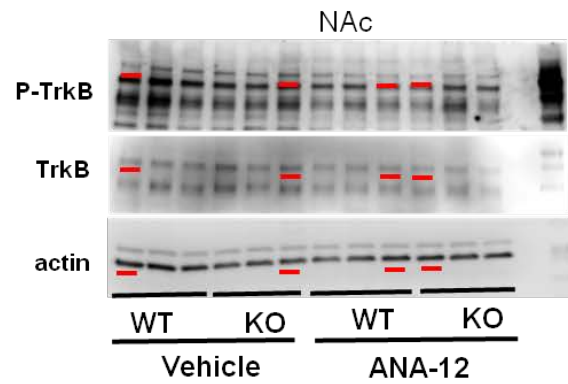
c. For figure 4h and i



d. For figure 6f and g



e. For figure 6h



f. For figure 6i and j

