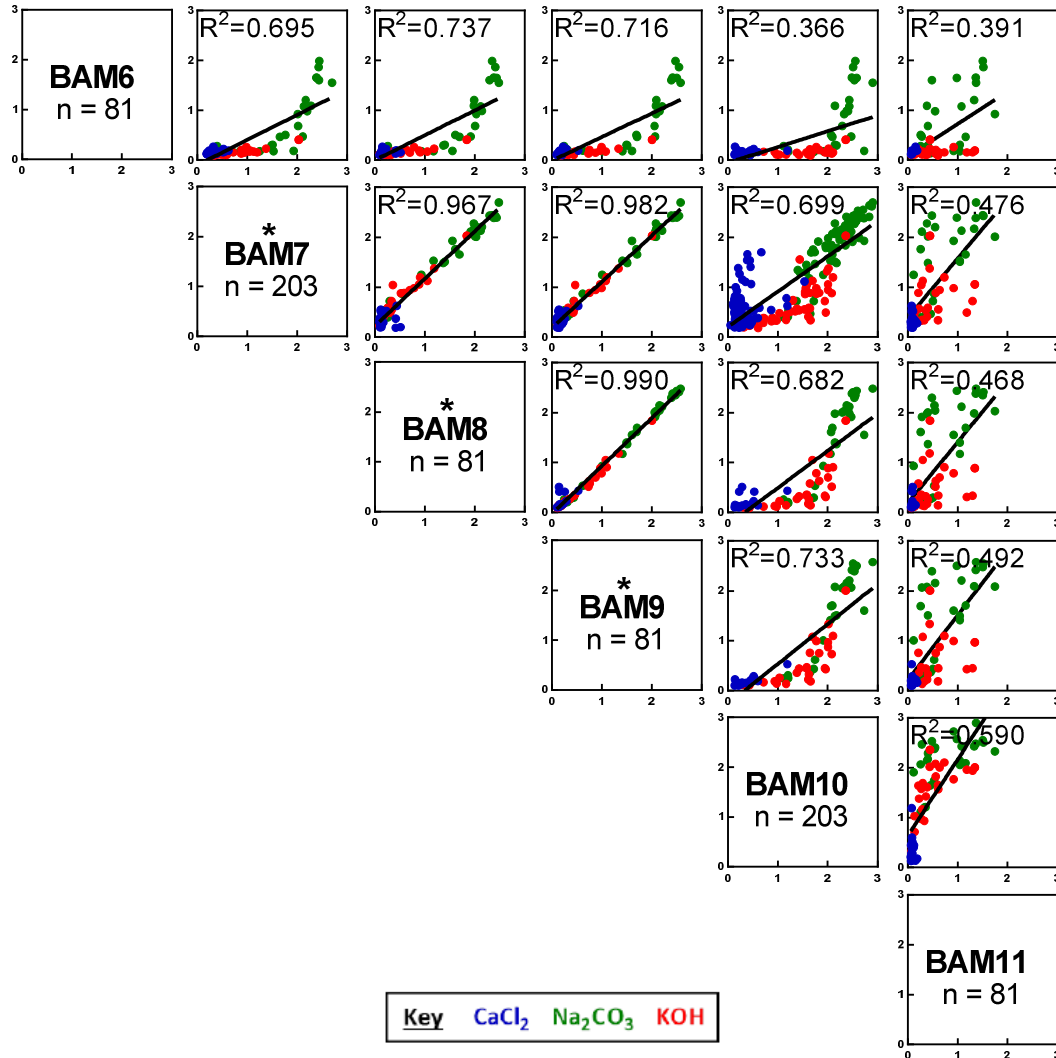
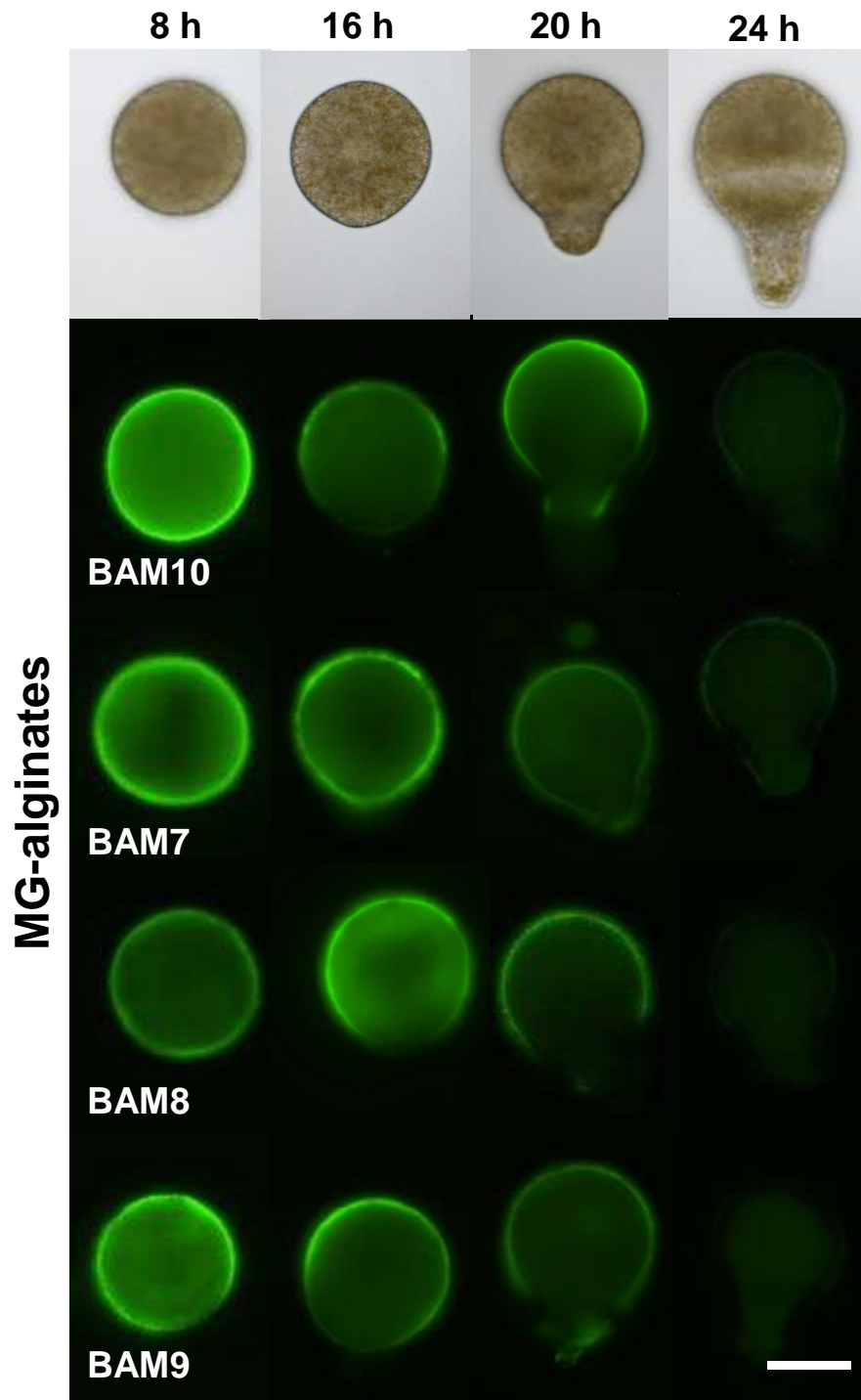


Torode *et al.* Supplementary Figure S1



**Fig. S1.** Scatterplot matrix of MAb binding to cell wall extracts of brown algae. Cell wall extracts were obtained from various Fucales (*Ascophyllum nodosum*, *Fucus serratus*, *F. spiralis*, *F. vesiculosus*, *Halidrys siliquosa*, *Himanthalia elongata*, *Pelvetia canaliculata*, *Sargassum muticum*) and Laminariales (*Chorda filum*, *Laminaria digitata*, *L. hyperborea*, *L. ochroleuca*, *Saccharina latissima*, *Undaria pinnatifida*) species. Results from ELISA experiments of MAb binding to cell wall extracts of CaCl<sub>2</sub> (blue), Na<sub>2</sub>CO<sub>3</sub> (green) and KOH (red) solubilized fractions were plotted as X,Y co-ordinates for each combination of the BAM6 to BAM11 MAbs. Cell wall extracts were coated at 50 µg/ml, and MAbs were used at 25-fold dilution. R<sup>2</sup> values are the linear line of best fit (black line) for all cell wall extracts combined. n for each scatterplot is the lowest of n of the two MAbs. \* = MAbs with similar binding profiles and probable similar epitopes.

Torode *et al.* Supplementary Figure S2



**Fig. S2.** Indirect immunofluorescence labelling of the deposition of MG-alginates in the early embryo in *F. serratus*. Bright field images show the morphology of the zygote and early embryo at time-points following fertilization. Green fluorescence shows the detection of the BAM7, BAM8, BAM9 and BAM10 epitopes in equivalent individuals. Scale bar = 50  $\mu$ m.