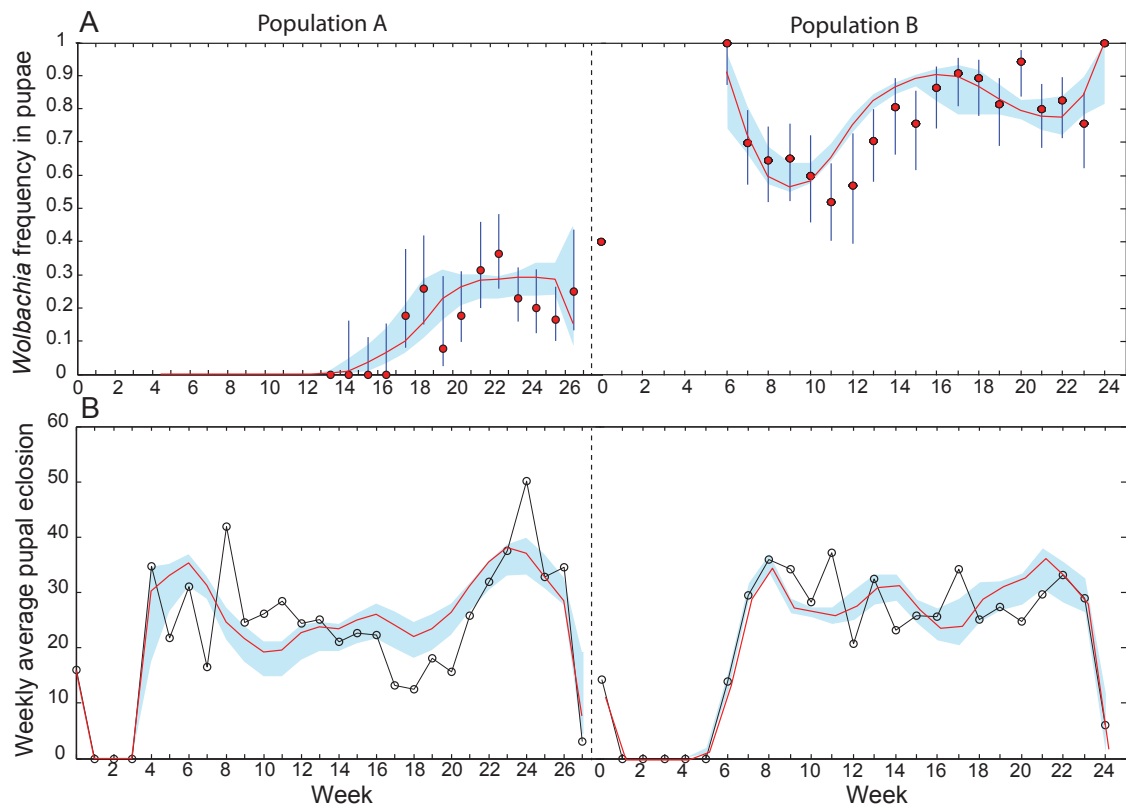


Predicting *Wolbachia* invasion dynamics in *Aedes aegypti* populations using models of density-dependent demographic traits

Penelope A. Hancock, Vanessa L. White, Scott A. Ritchie, Ary A. Hoffmann, H. Charles J. Godfray

BMC Biology 2016



Additional file 3: Figure S1.1. Observed mosquito and *wMel Wolbachia* dynamics and the posterior fitted values. Red lines show the MCMC iteration with the highest posterior probability and blue shaded areas show the 95% credible interval. Results for Population A and B are on the left and right of the dashed vertical line respectively. **(A)** Red circles show the observed *wMel* frequency in the pupae that eclosed in each week and vertical lines are the exact binomial 95% confidence intervals. **(B)** Black circles show the observed weekly average pupal eclosion.