

Figure S1 IRF8 does not induce Foxp3. Naive CD4 T cells from C57BL/6 mice were transduced with control, or IRF8-retroviral vector, and differentiated into Th0 or iTreg cells. Cells were stained with Foxp3. (a). FACS plot of the cells. (b). The ratios of Foxp3+/GFP+ were plotted from (a).

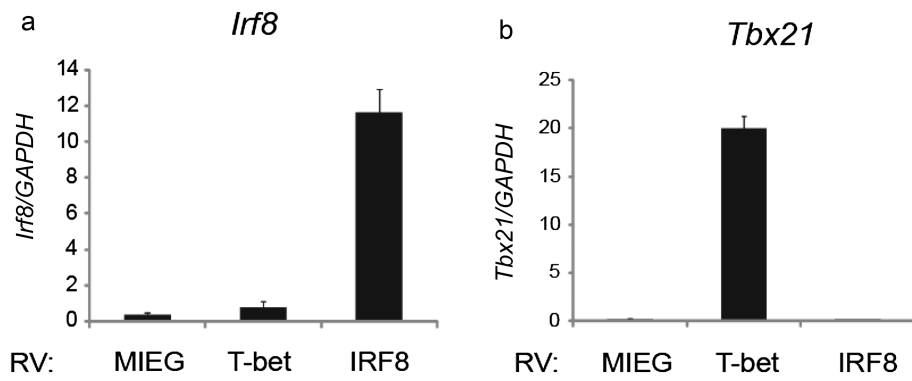


Figure S2 IRF8 and T-bet are independently regulated. (a) Naïve CD4 T cells from C57BL/6 mice were transduced with control-, T-bet, or IRF8-retroviral vectors, and differentiated into iTreg cells. RNA was isolated from the cells, and expression of *If8* (a) or *Tbx21* (b) was measured by quantitative RT-PCR. The error bar shows standard deviation (n=3).