

Supplementary Information

Table S1. Number of eyes (and individuals) with 0, 1 or 2 risk alleles at each of the 7 risk variants in analyses of progression to advanced AMD (GA or CNV), progression to GA only and progression to CNV only.

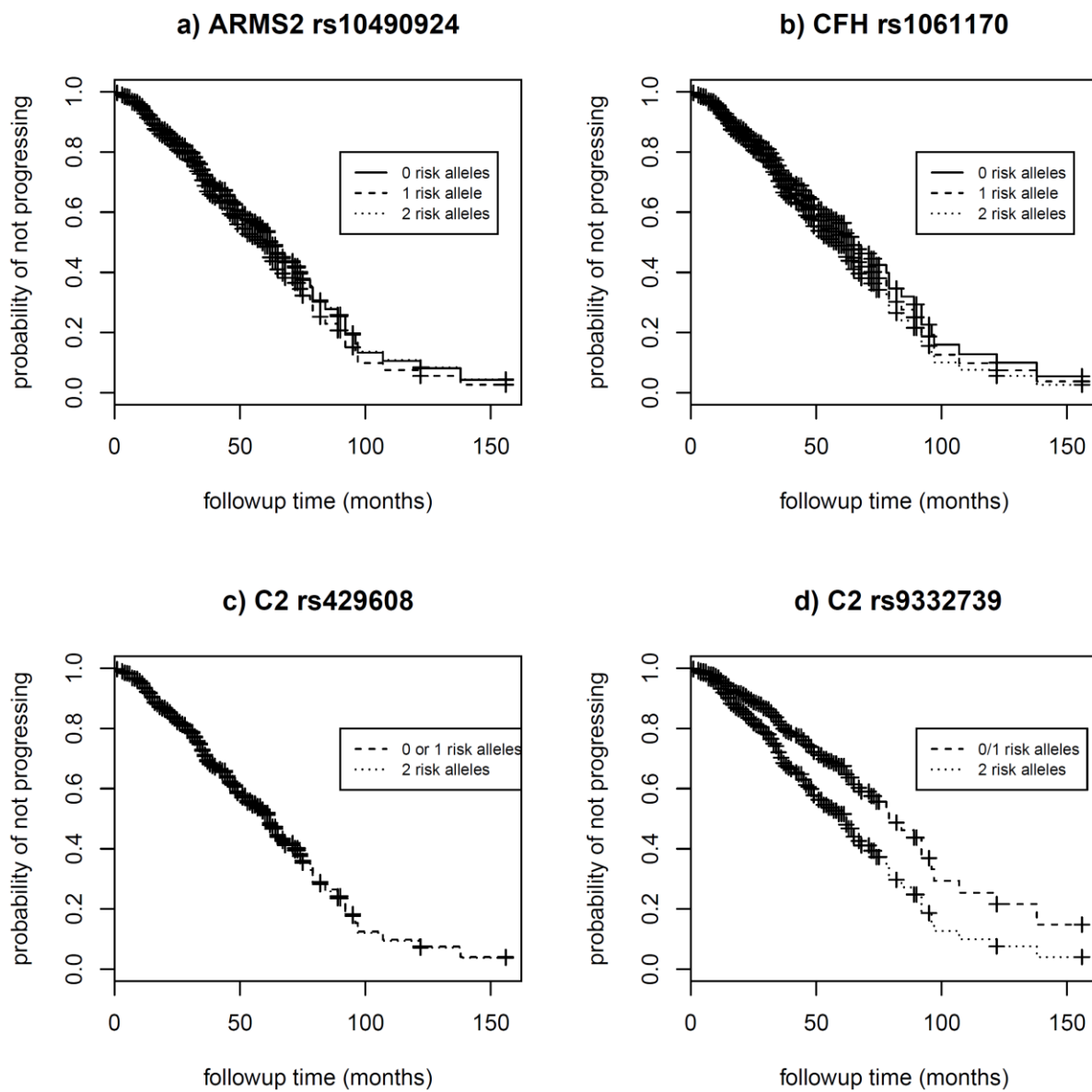
		Advanced AMD (GA or CNV)				GA				CNV			
		Risk alleles				Risk alleles				Risk alleles			
Progressed?		0	1	2	NA	0	1	2	NA	0	1	2	NA
ARMS2 rs10490924	yes	70	74	22	-	34	28	9	-	36	46	13	-
	no	180	146	55	-	180	146	55	-	180	146	54	-
	total	250	220	77	-	214	174	64	-	216	192	67	-
		(169)	(150)	(53)		(145)	(121)	(45)		(151)	(133)	(46)	
CFH rs10737680	yes	9	42	116	-	3	19	50	-	6	23	66	-
	no	22	136	222	-	22	136	222	-	22	136	222	-
	total	31	178	338	-	25	155	272	-	28	159	288	-
		(20)	(123)	(229)		(18)	(107)	(186)		(19)	(112)	(199)	
CFH rs1061170	yes	30	77	58	2	14	31	25	2	16	46	33	0
	no	78	179	121	2	78	179	121	2	78	179	121	2
	total	108	256	179	4	92	210	146	4	94	225	154	2
		(75)	(173)	(121)	(3)	(68)	(142)	(99)	(3)	(68)	(154)	(106)	(2)
C2 rs429608	yes	2	20	145	-	0	12	60	-	2	8	85	-
	no	4	56	320	-	4	56	320	-	4	56	320	-
	total	6	76	465	-	4	68	380	-	6	64	405	-
		(4)	(52)	(316)		(3)	(45)	(263)		(4)	(46)	(280)	
C2 rs9332739	yes	1	3	161	2	-	2	68	2	1	1	93	0
	no	0	18	360	2	-	18	360	2	0	18	360	2
	total	1	21	521	4	-	20 (13)	428	4	1	19	453	2
		(1)	(13)	(355)	(3)		(295)	(3)	(1)	(12)	(315)	(2)	
CFB rs641153	yes	0	16	149	2	0	5	65	2	0	11	84	0
	no	1	27	350	2	1	27	350	2	1	27	350	2
	total	1	43	499	4	1	32	415	4	1	38	434	2
		(1)	(31)	(337)	(3)	(1)	(22)	(285)	(3)	(1)	(28)	(299)	(2)
C3 rs2230199	yes	84	70	13	-	32	34	6	-	52	36	7	-
	no	218	130	32	-	218	130	32	-	218	130	32	-
	total	302	200	45	-	250	164	38	-	270	166	39	-
		(207)	(135)	(30)		(172)	(114)	(25)		(189)	(115)	(26)	

Table S2. Multivariate regression coefficients and hazard ratios (HR) from Cox proportional hazards models testing whether progression rate from intermediate to advanced (grades 4 or 5) varied with genotype at 7 variants associated with risk of advanced AMD after controlling for variation due to age and sex. Contrasts from the intercept (females with 0 risk alleles) are reported. Significant variables are shown in bold. Models were relevelled to give contrasts between 2 and 1 risk alleles (shown in italic).

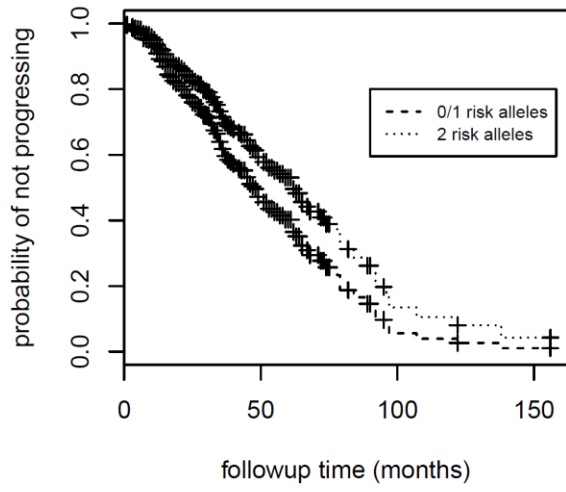
variable	coef	se (coef)	HR (95% CI)	p-value
Age	0.05	0.01	1.05 (1.03-1.08)	<0.001
Sex (M)	0.03	0.17	1.03 (0.71-1.50)	0.878
ARMS2: rs10490924 (GT)	0.22	0.18	1.24 (0.85-1.81)	0.254
ARMS2: rs10490924 (TT)	0.06	0.27	1.06 (0.55-2.05)	0.870
<i>ARMS2: rs10490924 (TT vs. GT)</i>	<i>-0.16</i>	<i>0.27</i>	<i>0.85 (0.43-1.66)</i>	<i>0.632</i>
CFH: rs10737680 (CA)	-0.81	0.43	0.45 (0.16-1.26)	0.128
CFH: rs10737680 (AA)	-0.27	0.42	0.77 (0.27-2.18)	0.618
CFH: rs10737680 (AA vs. CA)	0.54	0.22	1.72 (1.06-2.79)	0.029
CFH: rs1061170 (TC)	0.26	0.25	1.30 (0.75-2.26)	0.347
CFH: rs1061170 (CC)	-0.10	0.28	1.10 (0.60-2.02)	0.755
<i>CFH: rs1061170 (CC vs. TC)</i>	<i>-0.17</i>	<i>0.20</i>	<i>0.84 (0.55-1.29)</i>	<i>0.436</i>
C2: rs429608 (GG)	0.39	0.46	1.48 (0.70-3.11)	0.307
C2: rs9332739 (GG)	0.15	0.66	1.17 (0.42-3.26)	0.768
CFB: rs641153 (GG)	-0.75	0.49	0.47 (0.20-1.10)	0.082
C3: rs2230199 (GC)	0.02	0.17	1.02 (0.70-1.49)	0.916
C3: rs2230199 (CC)	-0.30	0.31	0.74 (0.36-1.52)	0.401
<i>C3: rs2230199 (CC vs. GC)</i>	<i>-0.32</i>	<i>0.32</i>	<i>0.73 (0.35-1.53)</i>	<i>0.400</i>

Supplementary Figure 1 Survival curves for progression to advanced AMD (GA or CNV)

Survival curves showing the predicted progression rate from intermediate (grade 3) to advanced (grades 4 or 5) AMD with respect to the number of risk alleles at a) *ARMS2*:rs10490924, b) *CFH*:rs1061170, c) *C2*:rs429608, d) *C2*:rs9332739, e) *CFB*:rs641153, and f) *C3*:rs2230199 for females of 67 years of age.



e) C2 rs641153



f) C3 rs2230199

