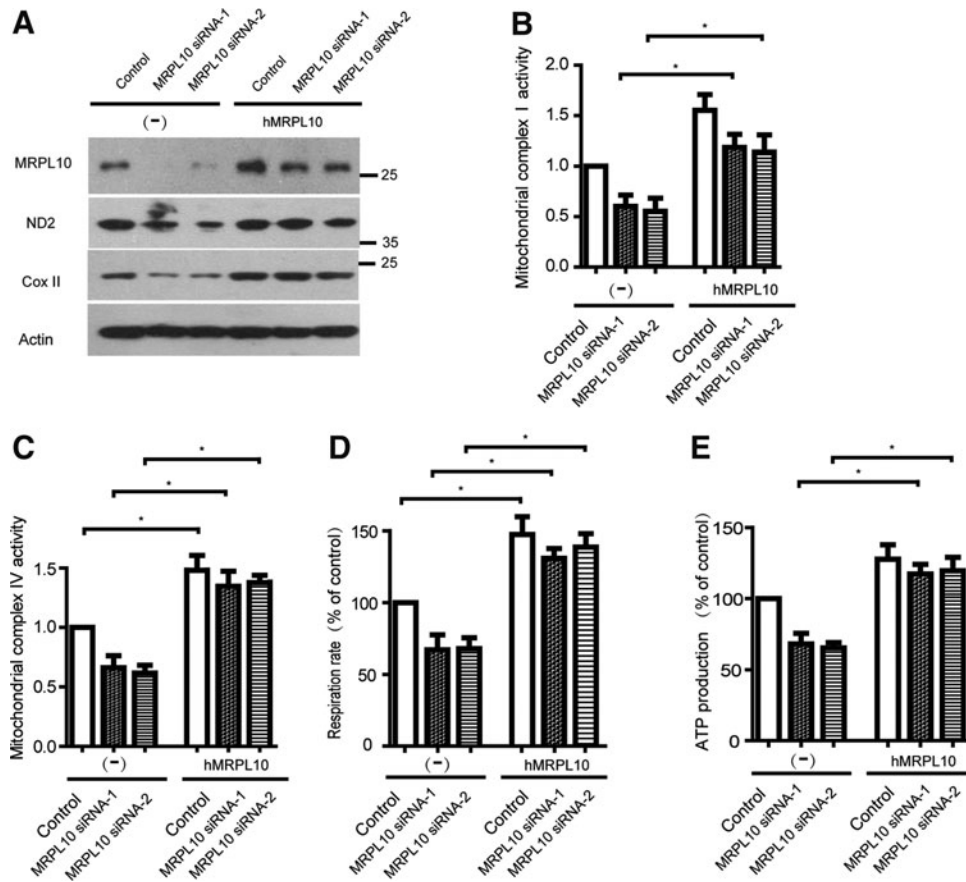


Supplementary Data



SUPPLEMENTARY FIG. S1. Exogenous MRPL10 expression restores mitochondrial abnormality caused by MRPL10 knockdown. **(A)** HEK293 cells were knockdown with MRPL10 first, and transfected with pcDNA3.1 empty vector or human MRPL10 expression plasmid, protein from total cell lysates were subjected to SDS-PAGE and immunoblotted with the antibodies indicated. Bar graphs depict the signal intensities of protein indicated. **(B, C)** Activities of the mitochondrial respiratory complex I, IV were measured in isolated mitochondria. **(D)** Mitochondrial respiration rate was measured using a clark type electrode in each group. **(E)** ATP production was measured in each group. * $p < 0.05$. SDS-PAGE, sodium dodecyl sulfate-polyacrylamide gel electrophoresis.