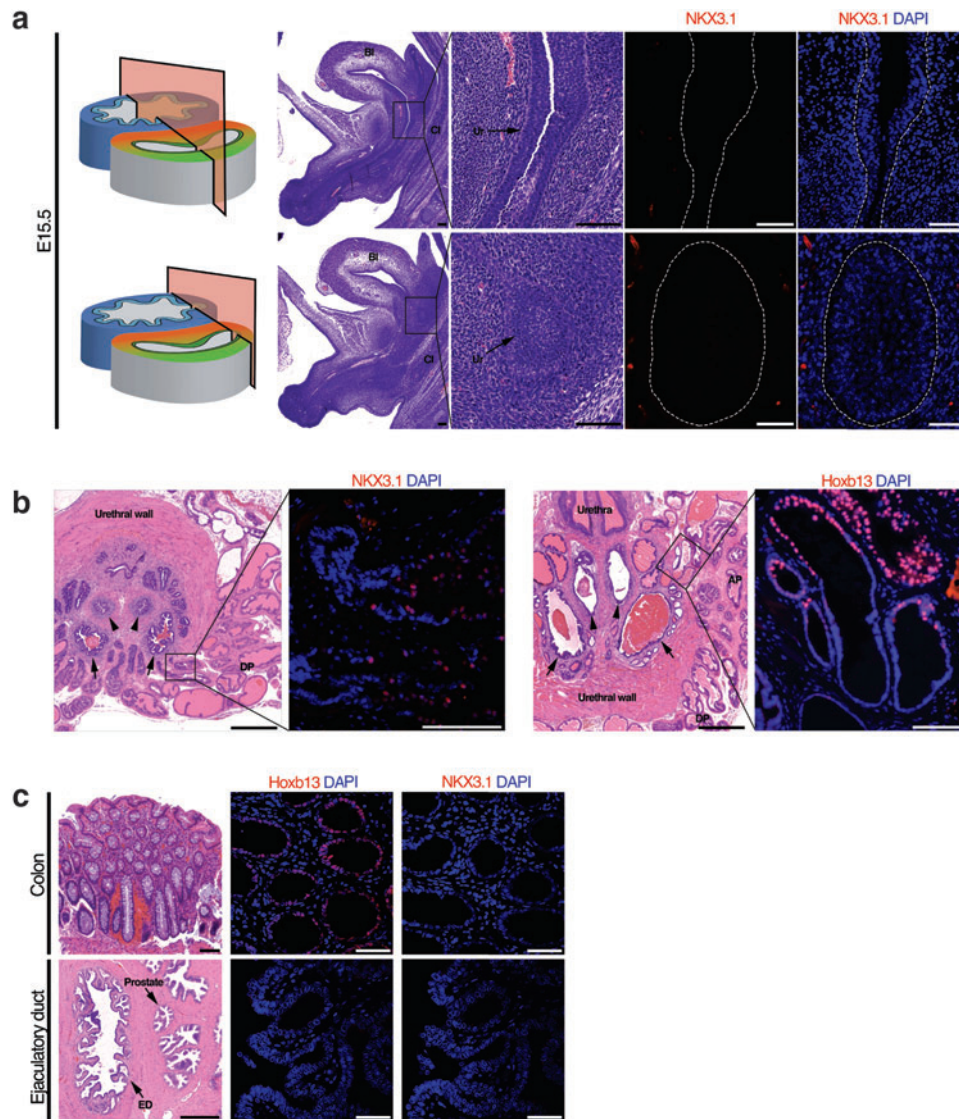


Supplementary Data



SUPPLEMENTARY FIG. S1. De novo expression of NKX3.1 and re-expression of Hoxb13 in the prostate. **(a)** Diagram shows serial sagittal section positions in E15.5 mouse embryo. H&E staining and IF staining of NKX3.1 in serial sagittal-sectioned E15.5 mouse embryo. *Dash lines* encircle the UGS epithelium. **(b)** H&E staining and IF staining of NKX3.1 and Hoxb13 in the junction of urethra and prostate. *Arrows*, seminal vesicle ducts. *Arrowheads*, ejaculatory ducts. Scale bars, 500 μ m (H&E staining), 100 μ m (IF staining). **(c)** H&E staining and IF staining of NKX3.1 and Hoxb13 in the human colon and ejaculatory ducts. Scale bars, 100 μ m (HE staining), 50 μ m (IF staining). AP, anterior prostate; DP, dorsal prostate; H&E, hematoxylin and eosin; IF, immunofluorescence; UGS, urogenital sinus; Ur, urethra.