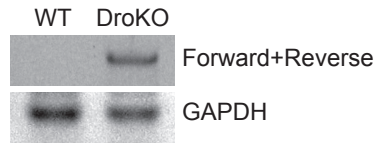
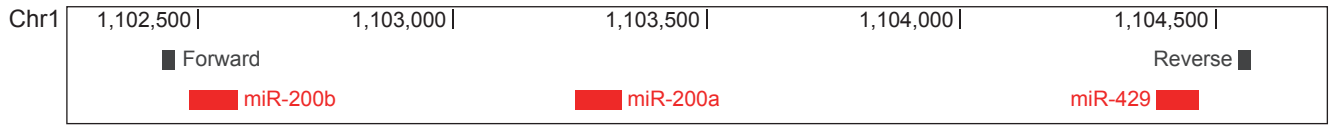


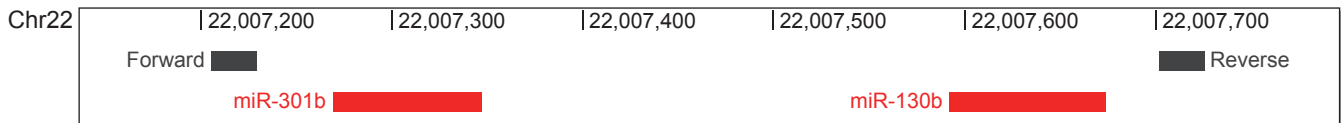
## A Pri-miR-200b~200a~429



>Forward  
TAC TGA GCT TCC CAG CGA GTC CC

>Reverse  
GAT GGG CAC AGG CCA TAG TGA GG

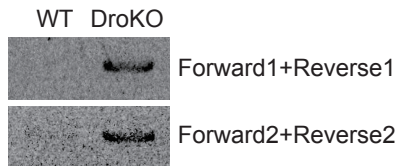
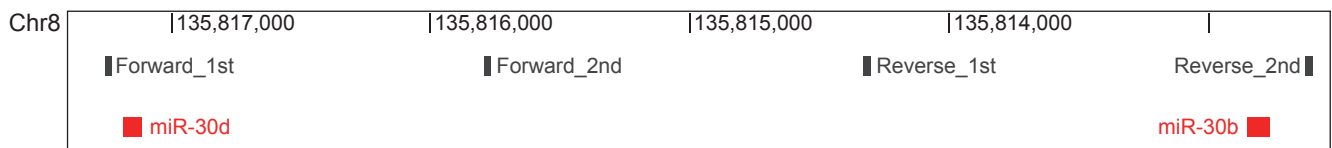
## B Pri-miR-301b~130b



>Forward  
CCA CCC ATC CAT GGT TGA GCT TCC

>Reverse  
AAA GTG GAG TGA GGC AGC AAG CTC

## C Pri-miR-30d~30b



>Forward\_1st  
TAG CTG AAG ATG ATG ACT GGC AAC

>Forward\_2nd  
GAC TCA GGT GGC TTT CCAACT TG

>Reverse\_1st  
GGA CTG TTT CAC CAAACC TGT TGG

>Reverse\_2nd  
TTC AAG TAG ATC CCT GCC AGC TAG