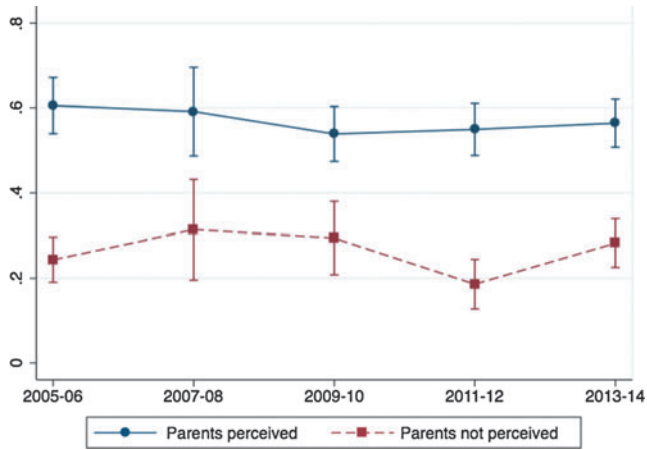


Supplementary Data



Supplementary Figure S1. Trends in the proportions of objectively obese/overweight children who correctly perceived themselves as overweight, stratified by parental correct perception about the children's overweight status. Adjusted for objectively measured weight category (obesity or overweight), age category, sex, race and ethnicity, family income category, healthcare provider visits over past year, and insurance coverage. Error bars represent 95% confidence intervals.