

Effectiveness of advanced carbohydrate counting in type 1 diabetes mellitus : a systematic review and meta-analysis

Shimin Fu^{1,†}, Linjun Li^{2,†}, Shuhua Deng¹, Liping Zan¹ and Zhiping Liu^{1*}

¹Department of Endocrinology, The First Affiliated Hospital of Chongqing Medical University, Chongqing, China

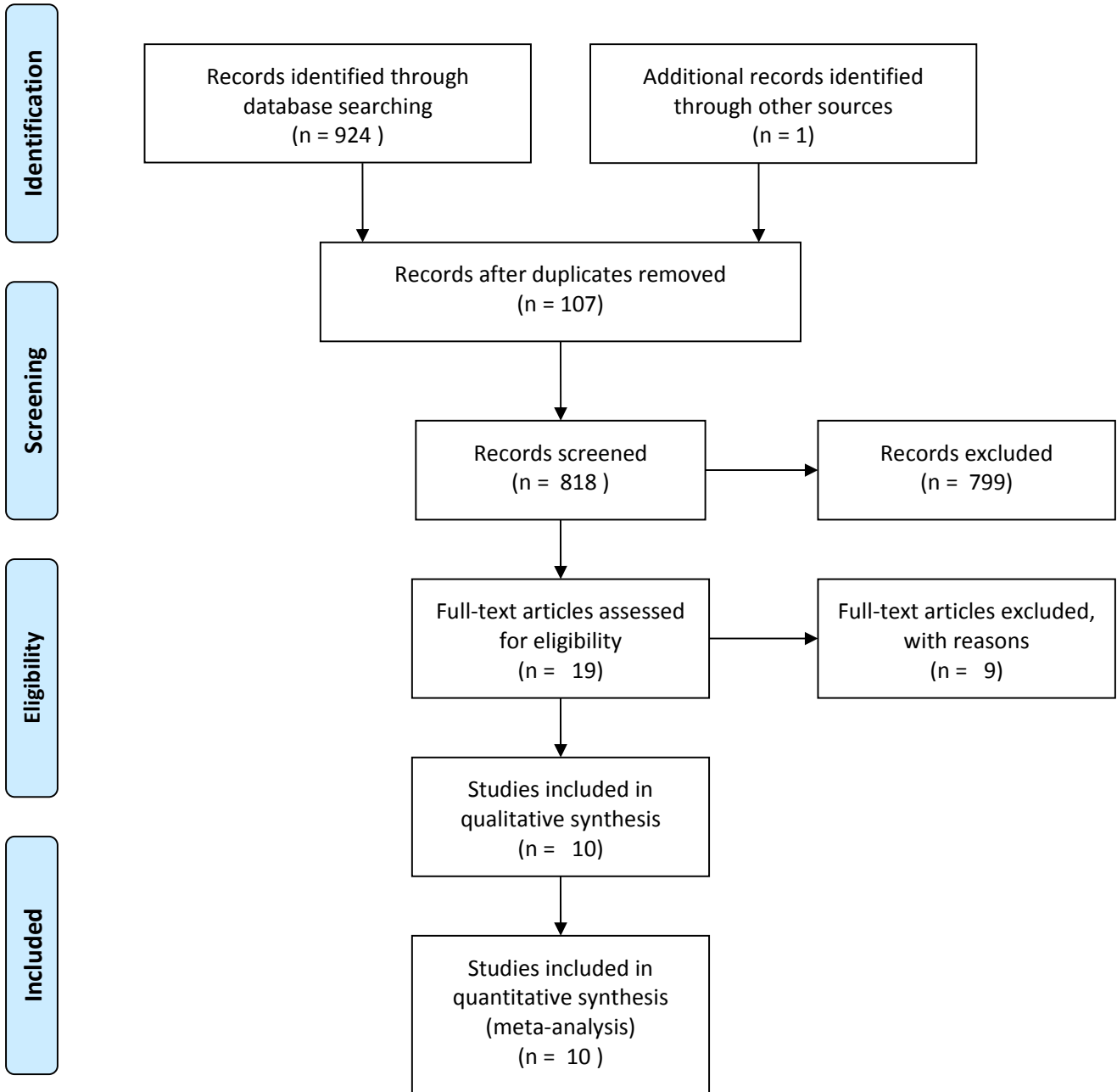
²Department of Cardiothoracic Intensive Care Unit, The First Affiliated Hospital of Chongqing Medical University, Chongqing, China

[†] These authors contributed equally to the study.

* Corresponding author: Zhiping Liu, fax +86 023 89011552, email nfmlzp@163.com.



PRISMA 2009 Flow Diagram



From: Moher D, Liberati A, Tetzlaff J, Altman DG, The PRISMA Group (2009). Preferred Reporting Items for Systematic Reviews and Meta-Analyses: The PRISMA Statement. PLoS Med 6(6): e1000097. doi:10.1371/journal.pmed1000097

For more information, visit www.prisma-statement.org.

Figure S1. Sensitivity analyses SMD of HbA_{1c} concentration in all eligible studies.

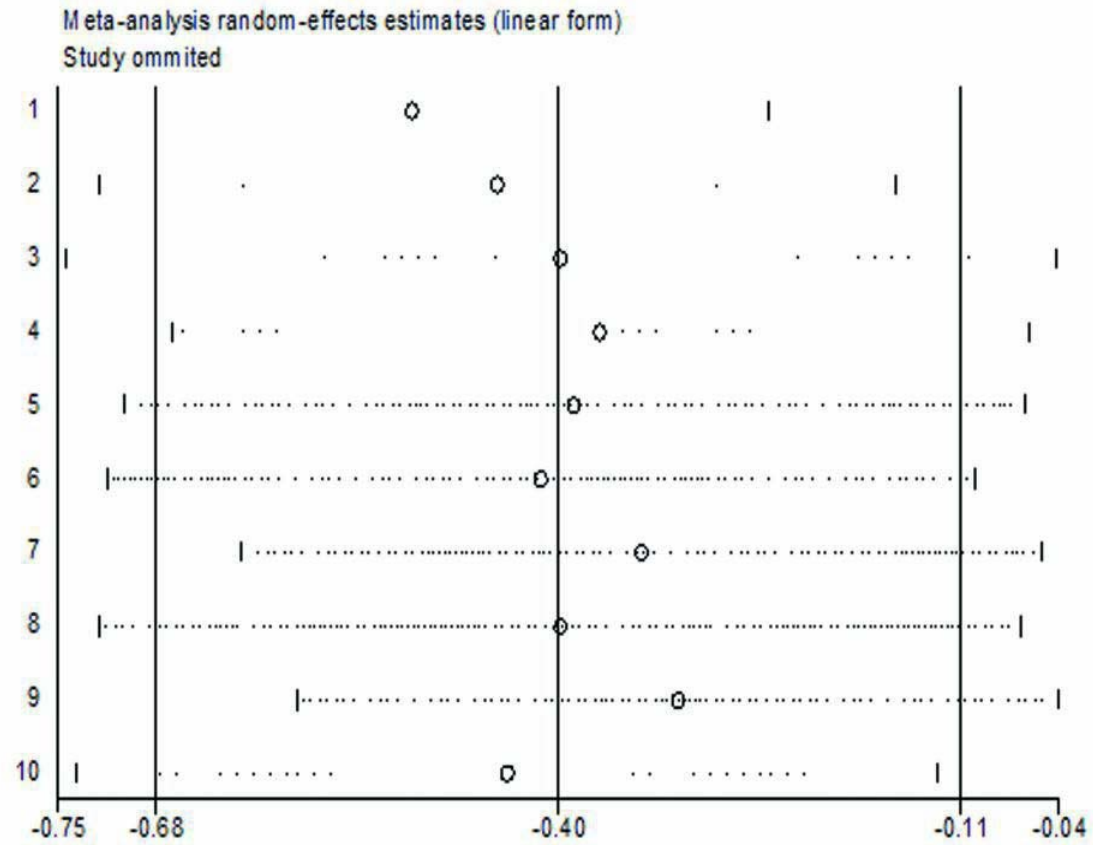


Figure S2. Egger's test for assessing publication bias for HbA_{1c} concentration.

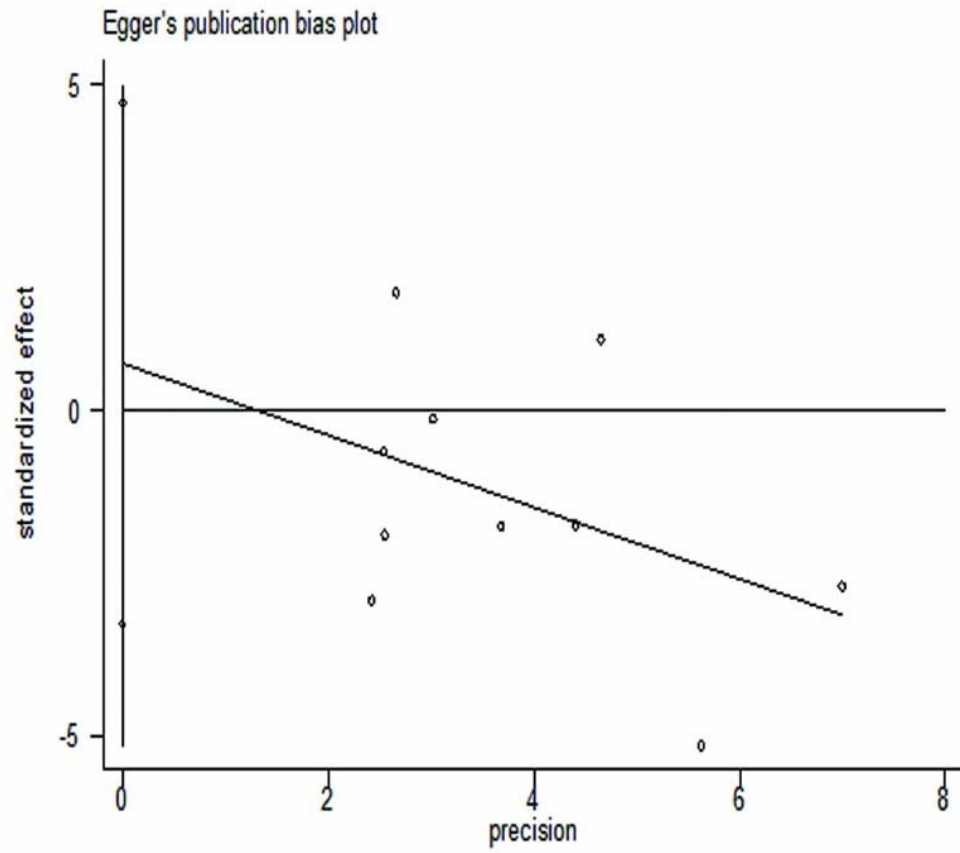


Table S1-The retrieval strategy In the pubmeddatabase.

Search	Query	Items found
#10	Search (((("Hemoglobin A, Glycosylated"[Mesh]) OR ((HbA1C[Title/Abstract]) OR ((((((Glycated hemoglobin[Title/Abstract]) OR glycosylated hemoglobin[Title/Abstract]) OR hemoglobin A1C[Title/Abstract]) OR saccharified hemoglobin[Title/Abstract]) OR HA1C[Title/Abstract]))) AND (((("Diabetes Mellitus, Type 1"[Mesh]) OR (((Type 1 diabetes[Title/Abstract]) OR Type 1 diabetes mellitus[Title/Abstract]) OR insulin dependent diabetes mellitus[Title/Abstract]) OR T1DM[Title/Abstract]))) AND ((((((carb counting[Title/Abstract]) OR carb-counting[Title/Abstract]) OR carbohydrate counting[Title/Abstract]) OR dietary carbohydrates[Title/Abstract]) OR Carbohydrate exchange[Title/Abstract])))	36
#9	Search ("Hemoglobin A, Glycosylated"[Mesh]) OR ((HbA1C[Title/Abstract]) OR ((((((Glycated hemoglobin[Title/Abstract]) OR glycosylated hemoglobin[Title/Abstract]) OR hemoglobin A1C[Title/Abstract]) OR saccharified hemoglobin[Title/Abstract]) OR HA1C[Title/Abstract]))	32487
#8	Search "Hemoglobin A, Glycosylated"[Mesh]	24554
#7	Search (HbA1C[Title/Abstract]) OR ((((((Glycated hemoglobin[Title/Abstract]) OR glycosylated hemoglobin[Title/Abstract]) OR hemoglobin A1C[Title/Abstract]) OR saccharified hemoglobin[Title/Abstract]) OR HA1C[Title/Abstract])	14779
#6	Search HbA1C[Title/Abstract]	67
#5	Search ((((((Glycated hemoglobin[Title/Abstract]) OR glycosylated hemoglobin[Title/Abstract]) OR hemoglobin A1C[Title/Abstract]) OR saccharified hemoglobin[Title/Abstract]) OR HA1C[Title/Abstract]	14726

#4	Search (("Diabetes Mellitus, Type 1"[Mesh]) OR (((Type 1 diabetes[Title/Abstract]) OR Type 1 diabetes mellitus[Title/Abstract]) OR insulin dependent diabetes mellitus[Title/Abstract]) OR T1DM[Title/Abstract]))	79035
#3	Search "Diabetes Mellitus, Type 1"[Mesh]	63341
#2	Search (((Type 1 diabetes[Title/Abstract]) OR Type 1 diabetes mellitus[Title/Abstract]) OR insulin dependent diabetes mellitus[Title/Abstract]) OR T1DM[Title/Abstract])	41995
#1	Search (((((carb counting[Title/Abstract]) OR carb-counting[Title/Abstract]) OR carbohydrate counting[Title/Abstract]) OR dietary carbohydrates[Title/Abstract]) OR Carbohydrate exchange[Title/Abstract])	1250