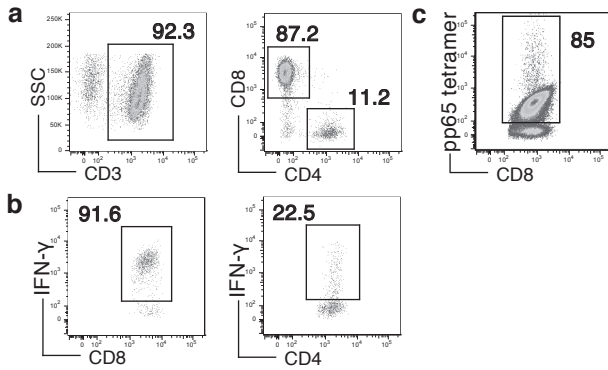


Supplementary Figure 1 Preparation of CMV pp65 antigen specific T cell.



Supplementary Figure 1 Preparation of CMV pp65 antigen specific T cell.

(a) T cells were expanded from PBMCs by priming with pp65 peptides in the presence of human IL-2 (1000 U/ml) for 10–12 days. The cellular phenotype was tested by FACS. (b) Expanded T cells were re-stimulated by pp65 peptides and intracellular IFN- γ was measured by ICS. (c) A high percentage of pp65 antigen-specific CD8⁺T cells were obtained, as measured by ICS of pp65 tetramer.