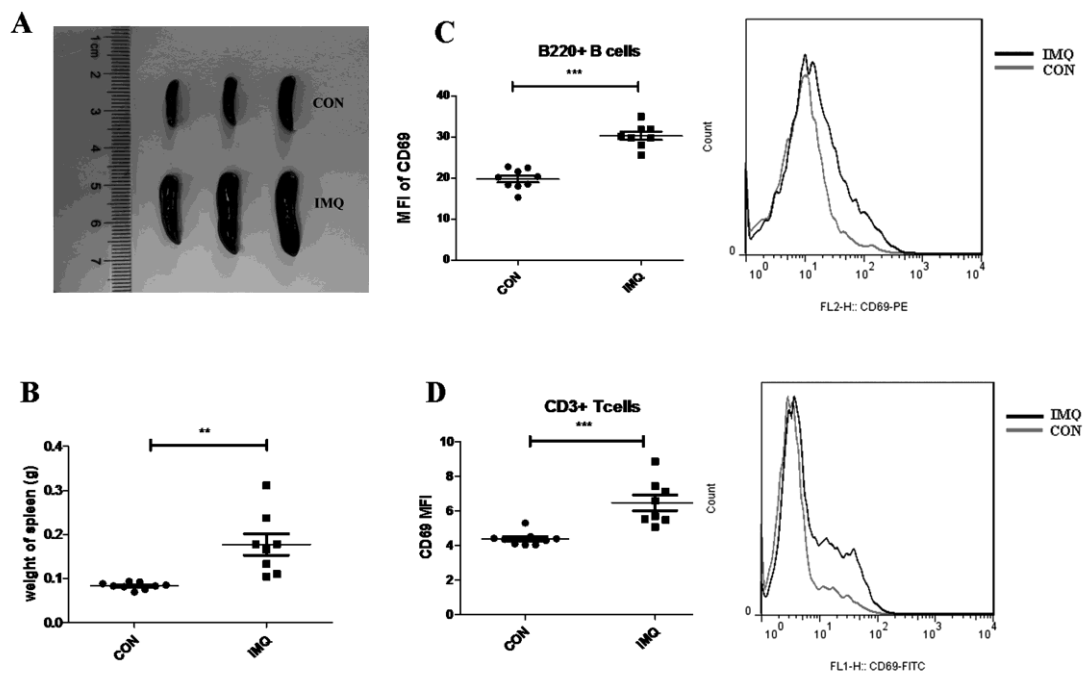


1 **Figure S1. Marked splenomegaly and activation of lymphocytes in IMQ-treated**  
2 **mice.**

3 (A) IMQ-treated mice at 10 weeks showed marked splenomegaly (B) Weight of  
4 spleens from IMQ-treated mice and C57BL/6 control mice. (C, D) Increased  
5 expression of CD69 in B cells (C) and T cells (D) from IMQ-treated mice.  
6 Representative histograms are on the right. (B-D) The data are shown as means  $\pm$   
7 SEMs and represent 2 independent experiments. \*P values  $<0.05$ , \*\*P $<0.01$  and  
8 \*\*\*P $<0.001$ , determined by t tests.

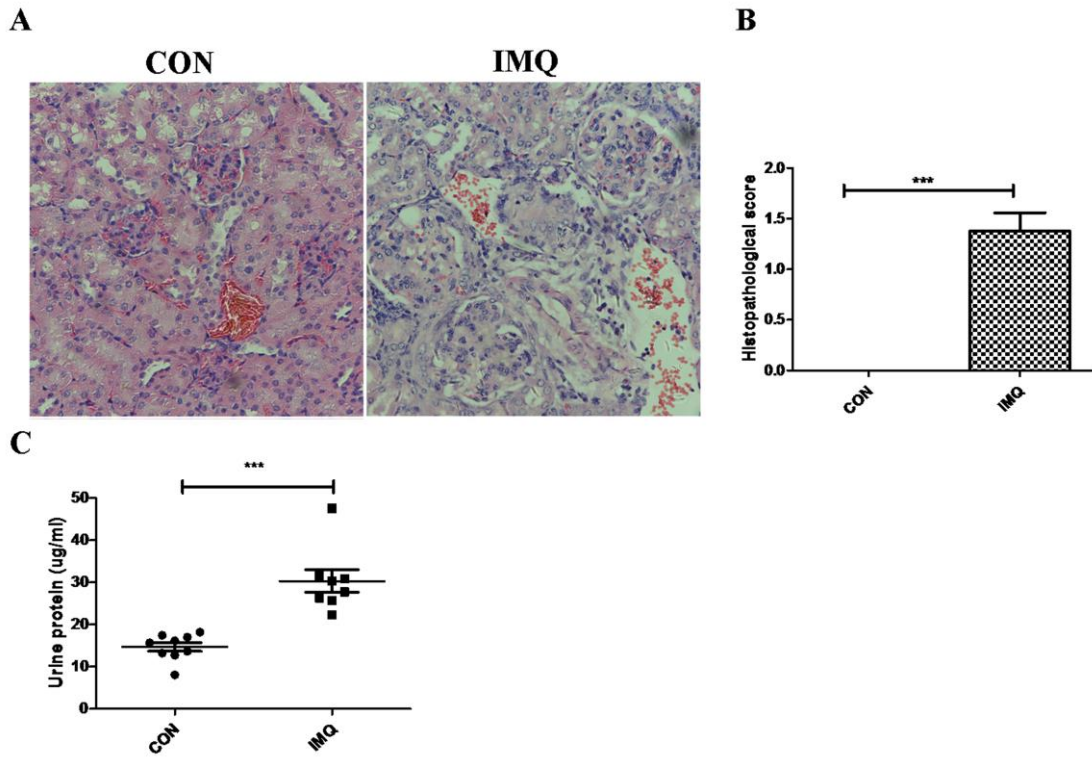


9

10 **Figure S2. Severe glomerulonephritis and proteinuria in IMQ-treated mice.**

11 (A) HE staining of renal tissues from C57BL/6 control mice (left) and IMQ-treated  
12 mice (B) Histopathologic scores in C57BL/6 control mice and mice treated with IMQ.  
13 (C) Proteinuria in C57BL/6 control mice and IMQ-treated mice. (B, C) The data are

14 shown as means  $\pm$  SEMs and represent 2 independent experiments. \*P values <0.05,  
15 \*\*P<0.01 and \*\*\*P<0.001, determined by t tests.



16