

Chromatin associated SETD3 negatively regulates VEGF expression

Ofir Cohn^{1,2}, Michal Feldman^{1,2}, Lital Weil^{1,2}, Margarita Kublanovsky^{1,2} and Dan Levy^{1,2#}

¹The Shraga Segal Department of Microbiology, Immunology and Genetics and the ²National Institute for Biotechnology in the Negev, Ben-Gurion University of the Negev, P.O.B. 653, Be'er-Sheva 84105, Israel

#Correspondence should be addressed to D.L: ledan@post.bgu.ac.il

Corresponding Author:

Dr. Dan Levy

Department of Microbiology, Immunology and Genetics

Ben-Gurion University of the Negev

Be'er Sheva 84105, Israel

e-mail: ledan@post.bgu.ac.il

Tel: +972-8-6477251

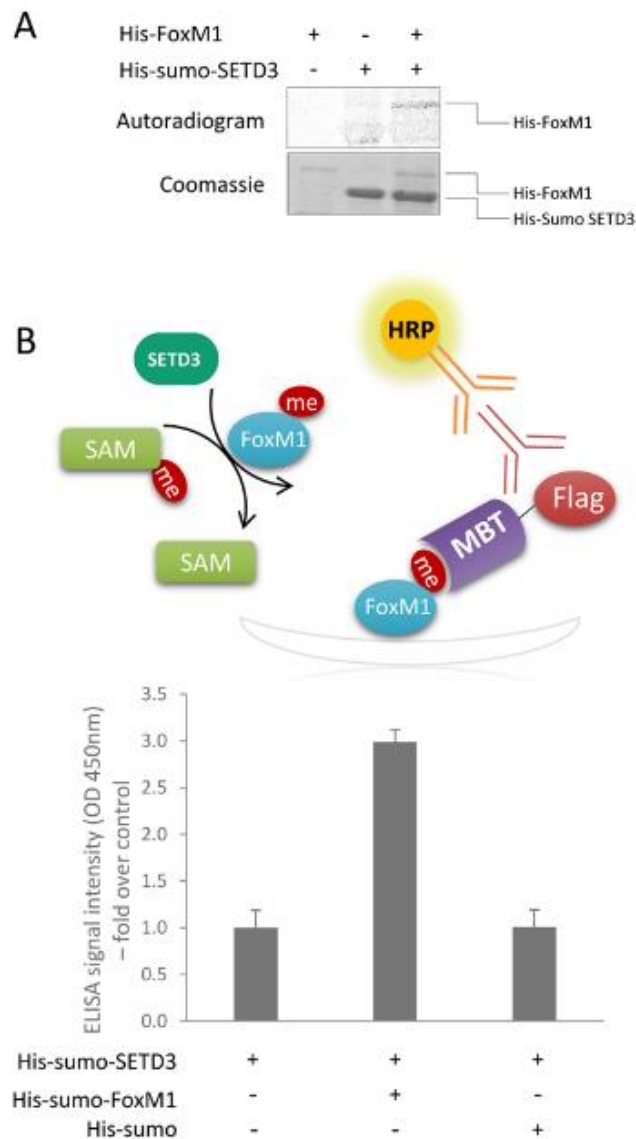


Figure S1: SETD3 methylates FoxM1 *in vitro* **A.** *In-vitro* methylation in the presence of ^3H -labeled SAM with recombinant His-FoxM1 and His-sumo-SETD3. Coomassie stain of the recombinant proteins used in the reaction is shown below. **B.** ELISA signal intensity (OD 450nm) of the indicated proteins that were subjected to *in-vitro* methylation reaction followed by detection with His-FLAG-MBT protein. Data are representative of three independent experiments (error bars, S.D.). Schematics of the ELISA approach for the identification of methylated proteins is shown above.