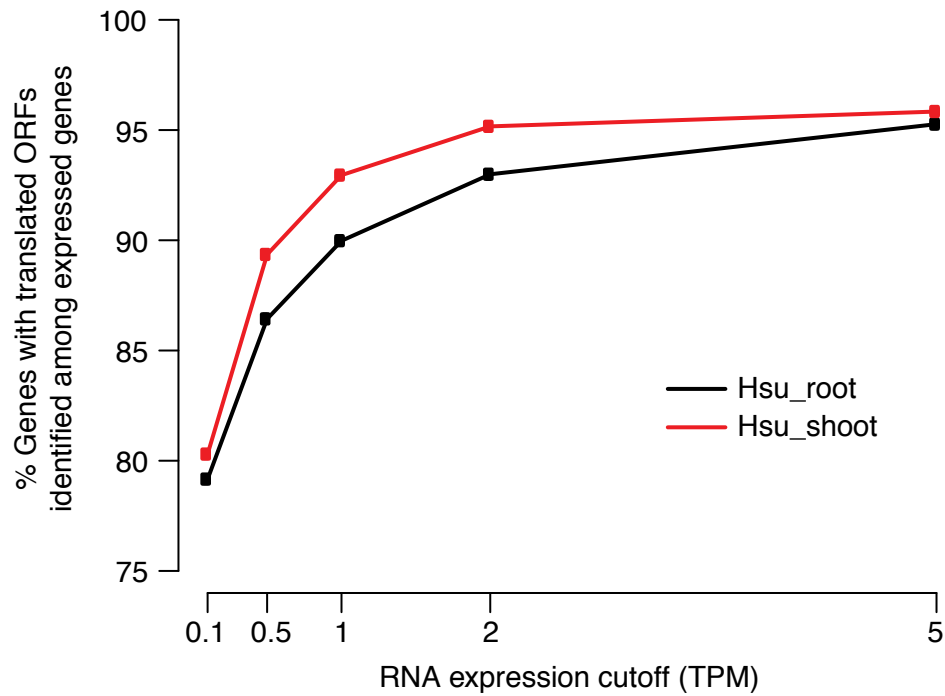


A**B**

Number of expressed genes with translated ORFs found/ Number of expressed genes

RNA expression cutoff (TPM)	Root	Shoot	Total
0.1	16651/ 21045	16069/ 20014	18148/ 21848
0.5	16472/ 19067	15348/ 17180	17901/ 19928
1	16039/ 17830	14233/ 15315	17368/ 18745
2	14864/ 15987	11971/ 12579	16129/ 17020
5	11513/ 12087	7326/ 7644	12714/ 13219