

Supplementary Information of

Regulation of Sirt1/Nrf2/TNF- α signaling pathway by luteolin is critical to attenuate acute mercuric chloride exposure induced hepatotoxicity

Daqian Yang, Xiao Tan, Zhanjun Lv, Biying Liu, Ruiqi Baiyun, Jingjing Lu & Zhigang Zhang*

College of Veterinary Medicine, Northeast Agricultural University, 59 Mucai Street,

Harbin 150030, China

E-mail address: zhangzhigang@neau.edu.cn

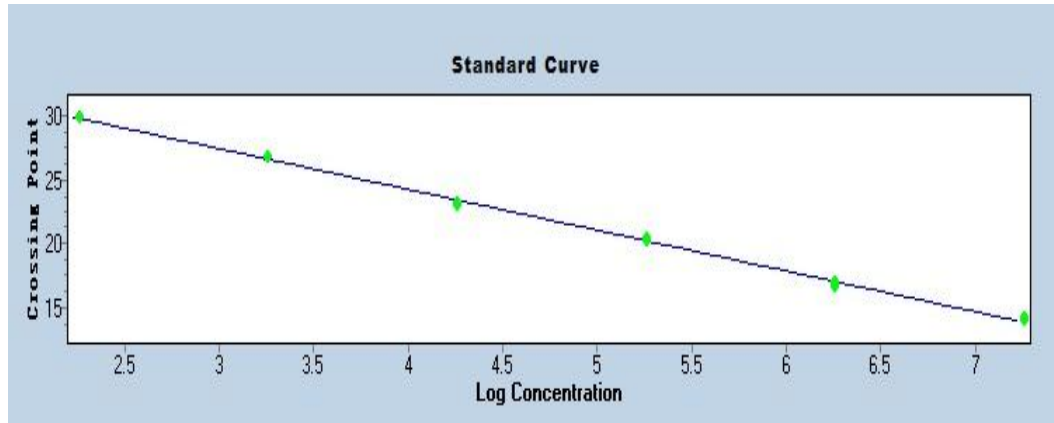


Figure S1. Standard curve of miRNA-146a was conducted using Roche LightCycler480 (Roche). The parameters of the standard curve was: $\log_2 N = -3.176\Delta Ct + 36.91$ ($R^2 = 0.9981, p < 0.01$). PCR efficiency was 106.5 % and the correlation coefficient was 0.9981.

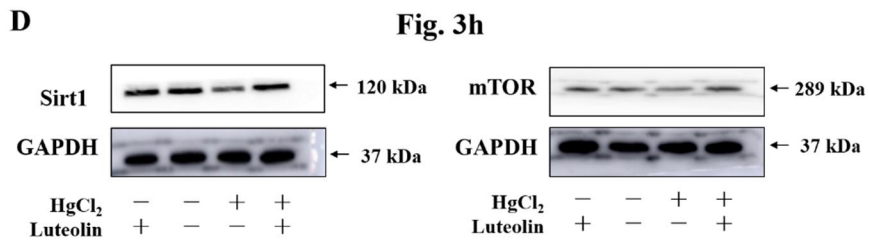
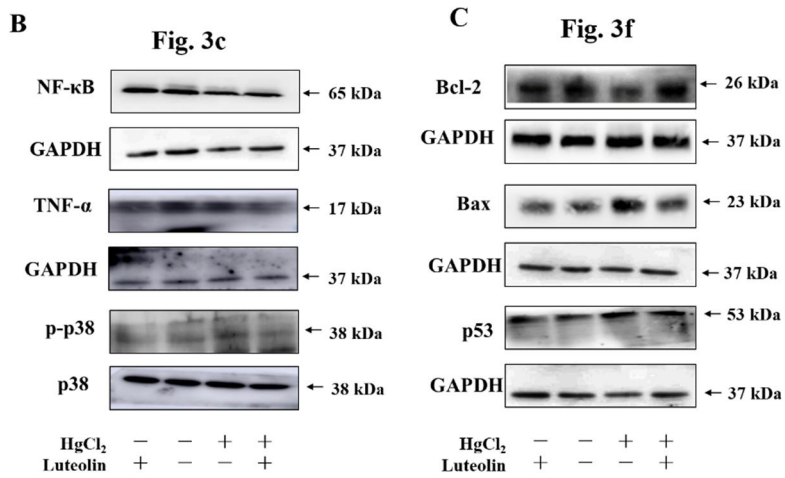
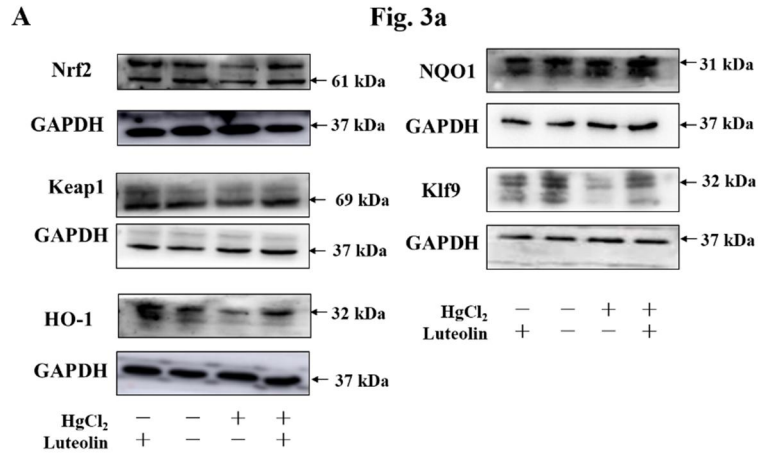


Figure S2. Original images of cropped blots.