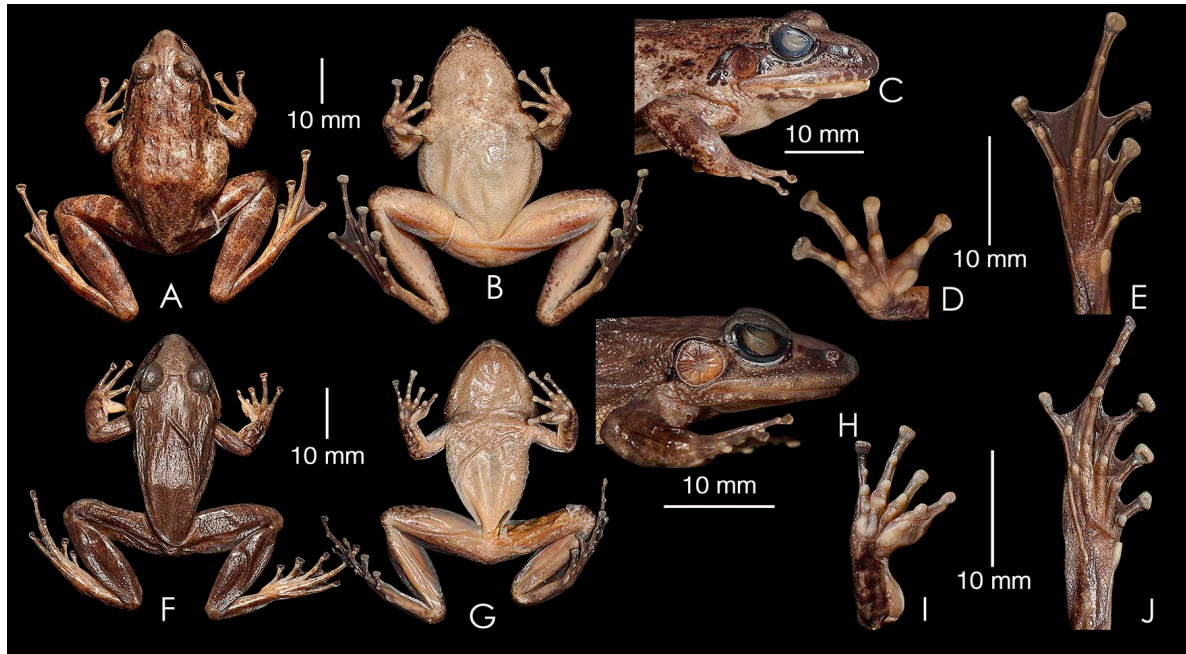


Molecular and morphological study of Leaping frogs (Anura, Ranixalidae) with description of two new species

Sonali Garg and SD Biju | PLoS One 2016



S6 Fig. *Indirana beddomii* group in preservation. From left to right: Dorsal view, ventral view, lateral view of head, ventral view of hand, ventral view of foot. (A–E) *Indirana tysoni*, SDBDU 2012.73, female. (F–J) *Indirana yadera*, SDBDU 2012.2744, male.