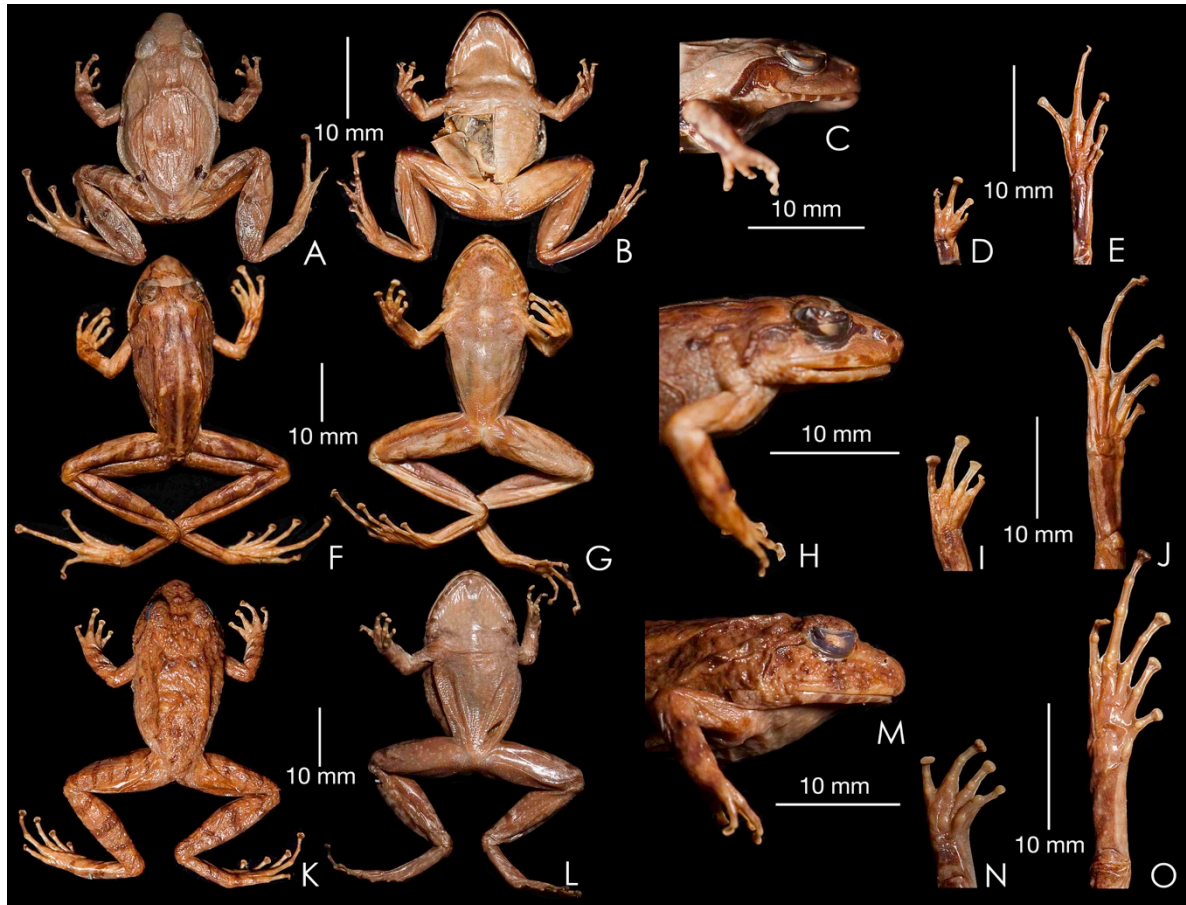


**Molecular and morphological study of Leaping frogs (Anura, Ranixalidae) with description of two new species**

Sonali Garg and SD Biju | PLoS One 2016



**S9 Fig. Genus *Sallywalkerana* in preservation. From left to right: Dorsal view, ventral view, lateral view of head, ventral view of hand, ventral view of foot. (A–E) Lectotype of *Ixalus diplostictus* (= *Sallywalkerana diplosticta*), NHM 74.4.29.1412 (ex BMNH 1947.2.2.21), female. (F–J) Lectotype of *Rana leptodactyla* (= *Sallywalkerana leptodactyla*), NHM 74.4.29.593 (ex BMNH 1947.2.29.39), female. (K–O) Lectotype of *Rana phrynoderma* (= *Sallywalkerana phrynoderma*), NHM 82.2.10.21 (ex BMNH 1947.2.3.8), female.**