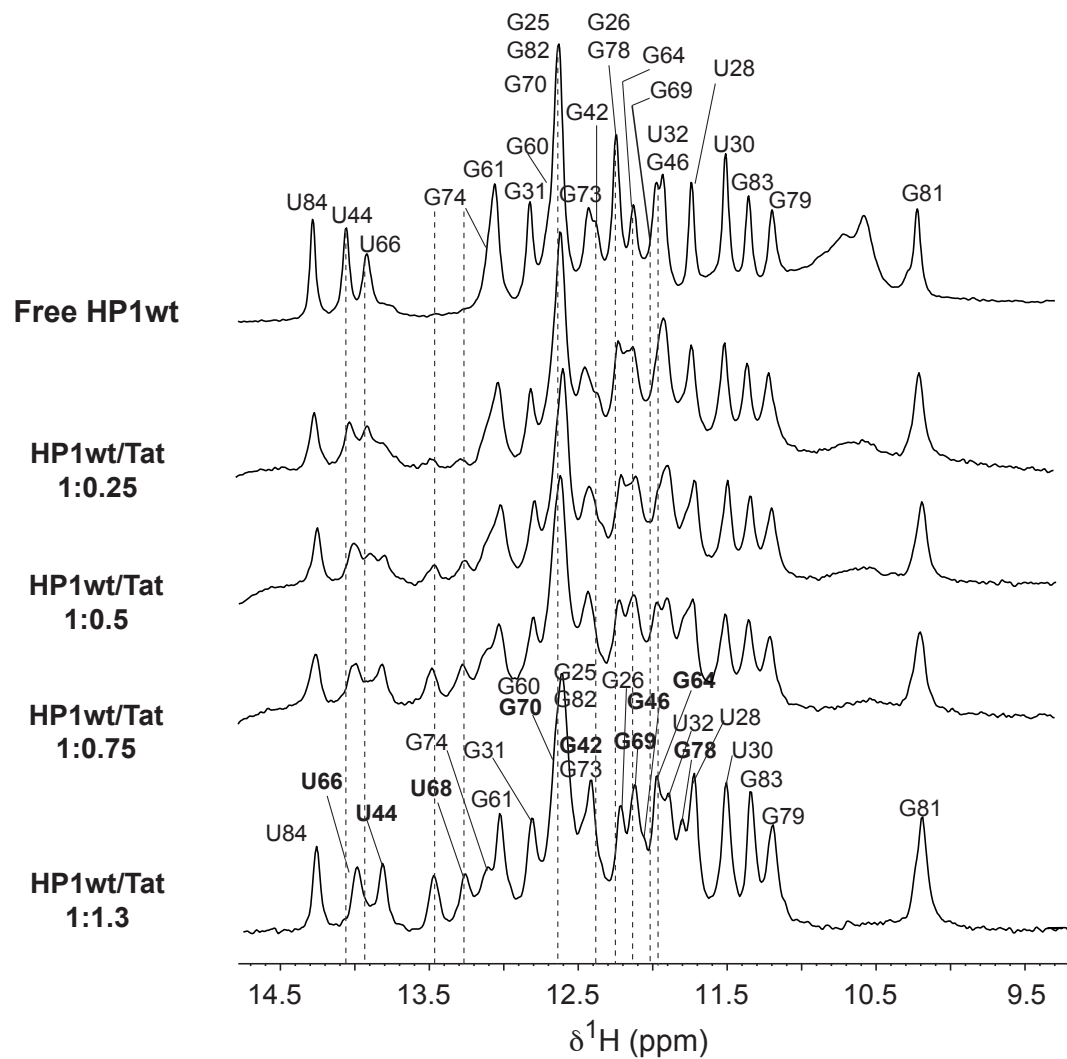
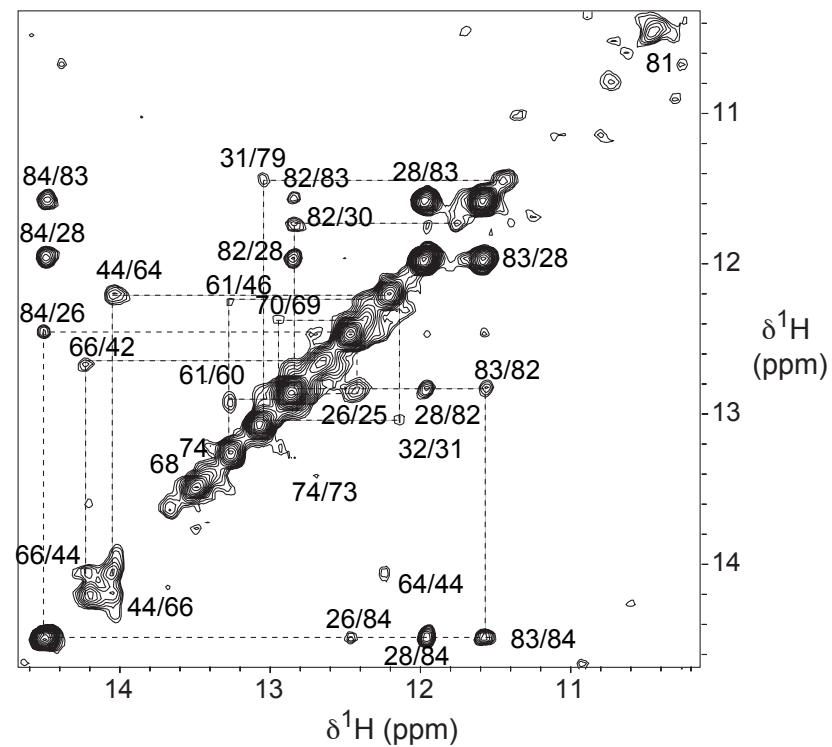
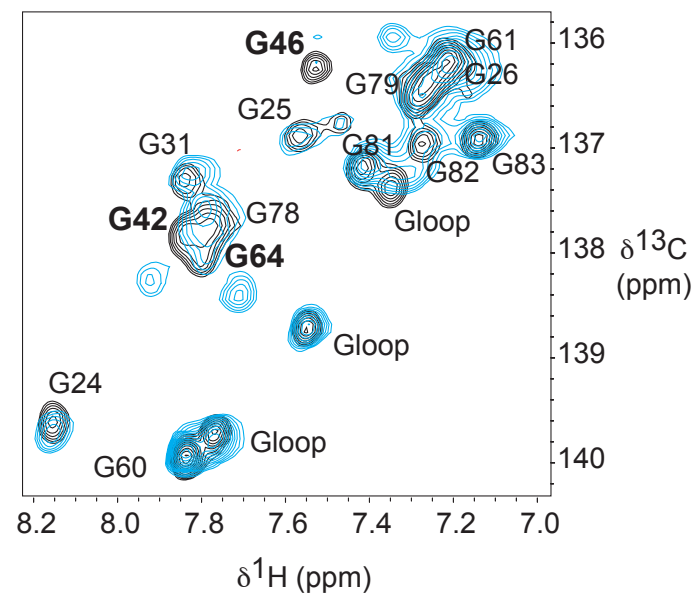


**(A)****(B)****(C)**

Supplemental Figure 10

**Supplemental Figure S10: Mapping of the interaction between HPI and RNA binding domain of Tat by NMR**

(A) Titration of HPI RNA by Tat peptide. Imino protons region for free RNA (top) and for HPI:Tat complexes upon peptide additions are shown. Spectra were recorded at 15°C in 90/10 H<sub>2</sub>O/D<sub>2</sub>O. (B) Imino/Imino protons region of NOESY spectrum recorded at 25°C in 90/10 H<sub>2</sub>O/D<sub>2</sub>O with a mixing time of 400 ms. Dashed lines represent NH/NH sequential assignment. (C) Overlays of regions of <sup>1</sup>H-<sup>13</sup>C HSQC spectra showing the aromatic H8-C8 selectively labeled [<sup>13</sup>C/<sup>15</sup>N-G] free HPI (black) and in complex with Tat (blue) recorded at 30°C. G42, G46 and G64 residues undergo changes upon Tat interaction. New resonances that appear upon interaction couldn't be assigned unambiguously.