

## **Supplementary Information**

### **Dopamine regulates renal osmoregulation during hyposaline stress *via* DRD1 in the spotted scat (*Scatophagus argus*)**

Maoliang Su<sup>1</sup>, Xingjiang Mu<sup>1</sup>, Lang Gui<sup>1</sup>, Peipei Zhang<sup>1</sup>, Jianan Zhou<sup>1</sup>, Jie Ma<sup>1</sup> & Junbin Zhang<sup>1</sup>

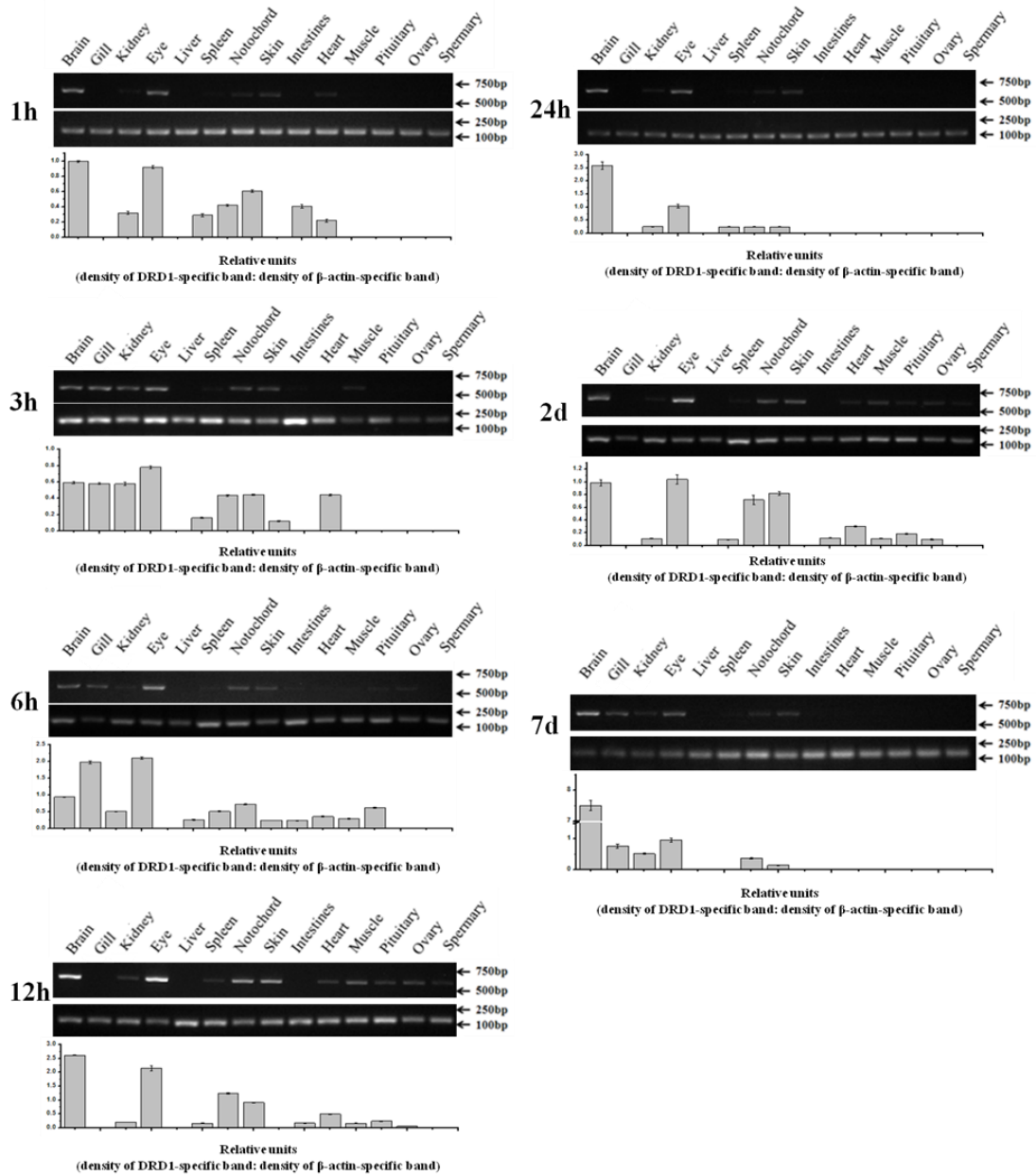
<sup>1</sup>Key Laboratory of Exploration and Utilization of Aquatic Genetic Resources, Ministry of Education, College of Fisheries and Life Science, Shanghai Ocean University, Shanghai 201306, China.

	Control group		Treatment group	
	Gene name	Ct value $\pm$ S.E.M.	Gene name	Ct value $\pm$ S.E.M.
1hpt	<i><math>\beta</math>-actin</i>	16.23 $\pm$ 0.05	<i><math>\beta</math>-actin</i>	16.12 $\pm$ 0.08
	<i>DRD1</i>	28.50 $\pm$ 0.02	<i>DRD1</i>	28.04 $\pm$ 0.03
3hpt	<i><math>\beta</math>-actin</i>	16.19 $\pm$ 0.10	<i><math>\beta</math>-actin</i>	16.09 $\pm$ 0.03
	<i>DRD1</i>	29.36 $\pm$ 0.05	<i>DRD1</i>	28.23 $\pm$ 0.25
6hpt	<i><math>\beta</math>-actin</i>	16.51 $\pm$ 0.08	<i><math>\beta</math>-actin</i>	16.71 $\pm$ 0.02
	<i>DRD1</i>	28.58 $\pm$ 0.18	<i>DRD1</i>	28.59 $\pm$ 0.03
12hpt	<i><math>\beta</math>-actin</i>	16.06 $\pm$ 0.05	<i><math>\beta</math>-actin</i>	16.44 $\pm$ 0.15
	<i>DRD1</i>	29.41 $\pm$ 0.03	<i>DRD1</i>	28.79 $\pm$ 0.23
24hpt	<i><math>\beta</math>-actin</i>	16.09 $\pm$ 0.08	<i><math>\beta</math>-actin</i>	16.09 $\pm$ 0.09
	<i>DRD1</i>	28.67 $\pm$ 0.08	<i>DRD1</i>	28.60 $\pm$ 0.24
2dpt	<i><math>\beta</math>-actin</i>	16.97 $\pm$ 0.08	<i><math>\beta</math>-actin</i>	16.95 $\pm$ 0.07
	<i>DRD1</i>	30.28 $\pm$ 0.04	<i>DRD1</i>	29.64 $\pm$ 0.20
7dpt	<i><math>\beta</math>-actin</i>	16.51 $\pm$ 0.06	<i><math>\beta</math>-actin</i>	16.63 $\pm$ 0.04
	<i>DRD1</i>	29.54 $\pm$ 0.07	<i>DRD1</i>	29.79 $\pm$ 0.21

**Table S1. Ct values of *SaDRD1* gene expression levels in the analysis of RT-qPCR data.**

	Control group		Treatment group	
	Gene name	Ct value $\pm$ S.E.M.	Gene name	Ct value $\pm$ S.E.M.
1hpt	<i><math>\beta</math>-actin</i>	16.92 $\pm$ 0.15	<i><math>\beta</math>-actin</i>	16.52 $\pm$ 0.17
	<i>DRD5</i>	30.51 $\pm$ 0.22	<i>DRD5</i>	30.40 $\pm$ 0.25
3hpt	<i><math>\beta</math>-actin</i>	16.96 $\pm$ 0.14	<i><math>\beta</math>-actin</i>	16.57 $\pm$ 0.13
	<i>DRD5</i>	29.51 $\pm$ 0.16	<i>DRD5</i>	28.39 $\pm$ 0.21
6hpt	<i><math>\beta</math>-actin</i>	16.89 $\pm$ 0.23	<i><math>\beta</math>-actin</i>	16.97 $\pm$ 0.04
	<i>DRD5</i>	29.84 $\pm$ 0.24	<i>DRD5</i>	ND
12hpt	<i><math>\beta</math>-actin</i>	16.98 $\pm$ 0.05	<i><math>\beta</math>-actin</i>	17.13 $\pm$ 0.06
	<i>DRD5</i>	30.36 $\pm$ 0.21	<i>DRD5</i>	29.75 $\pm$ 0.12
24hpt	<i><math>\beta</math>-actin</i>	16.88 $\pm$ 0.11	<i><math>\beta</math>-actin</i>	16.98 $\pm$ 0.16
	<i>DRD5</i>	31.74 $\pm$ 0.09	<i>DRD5</i>	32.08 $\pm$ 0.28
2dpt	<i><math>\beta</math>-actin</i>	16.79 $\pm$ 0.06	<i><math>\beta</math>-actin</i>	16.67 $\pm$ 0.11
	<i>DRD5</i>	31.10 $\pm$ 0.12	<i>DRD5</i>	ND
7dpt	<i><math>\beta</math>-actin</i>	16.32 $\pm$ 0.08	<i><math>\beta</math>-actin</i>	16.22 $\pm$ 0.10
	<i>DRD5</i>	31.32 $\pm$ 0.05	<i>DRD5</i>	ND

**Table S2. Ct values of *SaDRD5* gene expression levels in the analysis of RT-qPCR data. “ND” represents “not be detected”.**



**Figure S1. Tissue distributions of *SaDRD1* gene after FW-shock at different time points.** The results are presented as relative units (density of *DRD1*-specific band versus density of  $\beta$ -actin-specific band).

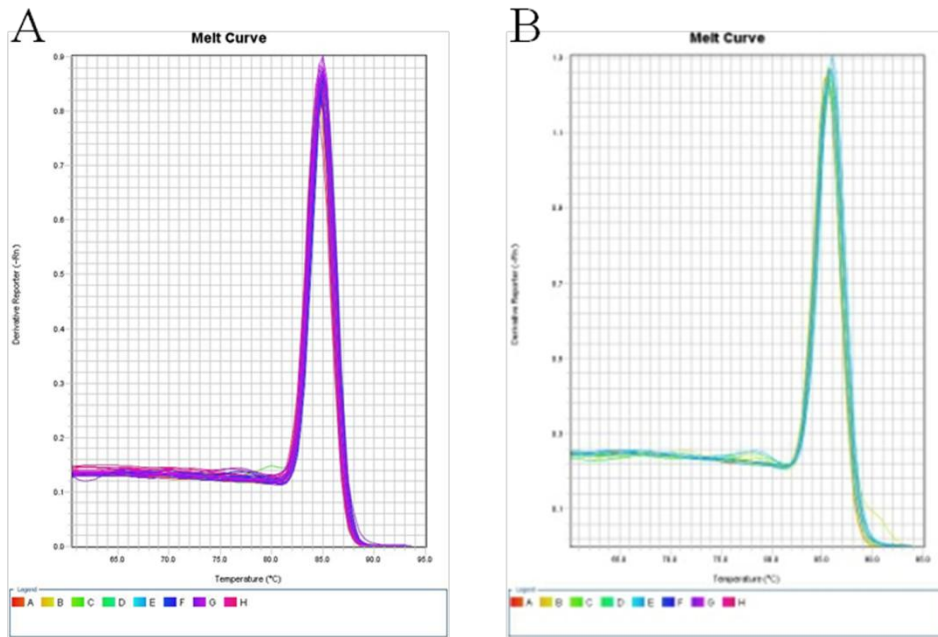


Figure S2. The melt curve of *SaDRD1* (A) and *SaDRD5* (B) in RT-qPCR.