

Supplementary Information

Dormant cancer cells accumulate high protoporphyrin IX levels and are sensitive to 5-aminolevulinic acid-based photodynamic therapy

Taku Nakayama¹, Shimpei Otsuka¹, Tatsuya Kobayashi¹, Hodaka Okajima¹, Kentaro Matsumoto¹, Yuichiro Hagiya¹, Keiji Inoue², Taro Shuin², Motowo Nakajima³, Tohru Tanaka³, Shun-ichiro Ogura^{1*}.

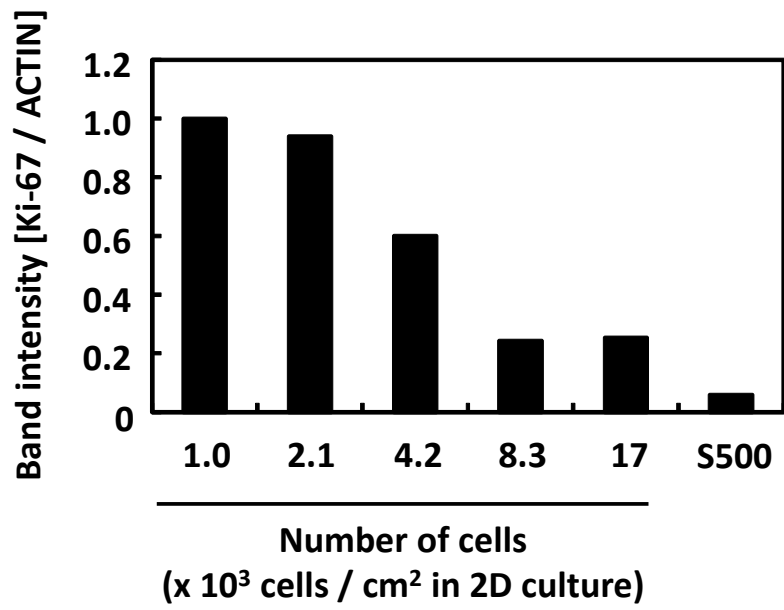
1. Graduate School of Bioscience and Biotechnology, Tokyo Institute of Technology, 4259 B47, Nagatsuta-cho, Midori-ku, Yokohama 226-8501, Japan.
2. Department of Urology, Kochi Medical School, Kohasu, Okocho, Nankoku, Kochi, 783-8505, Japan.
3. SBI Pharmaceuticals Co., Ltd., Izumi Garden Tower 20F, 1-6-1, Roppongi, Minato-ku, Tokyo 106-6020, Japan.

*Corresponding author: Shun-ichiro Ogura

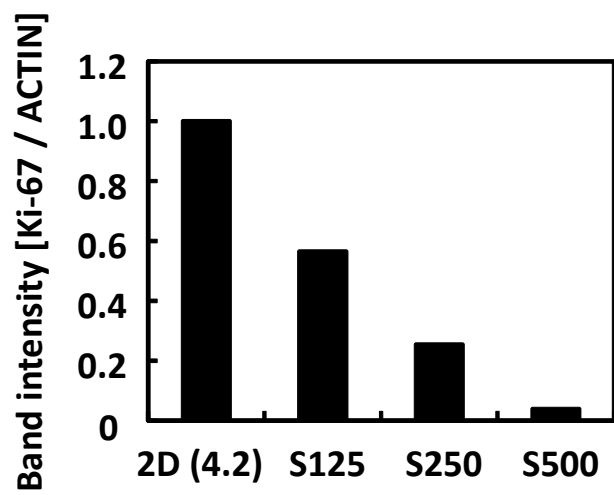
Department of Bioengineering, Graduate School of Bioscience and Biotechnology, Tokyo Institute of Technology, 4259 B47, Nagatsuta-cho, Midori-ku, Yokohama 226-8501, Japan.

Tel: +81-045-924-5845; Fax: +81-045-924-5845; Email: sogura@bio.titech.ac.jp

a



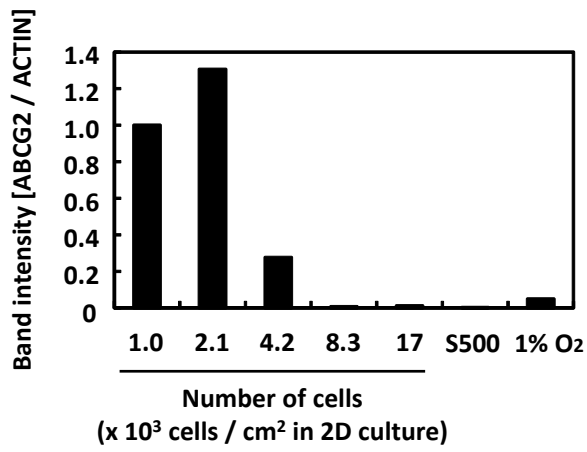
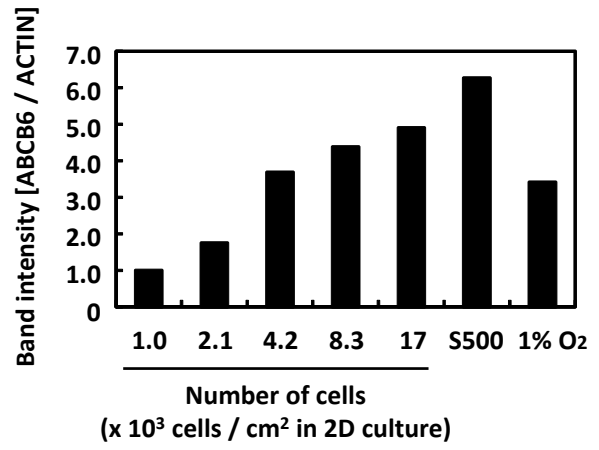
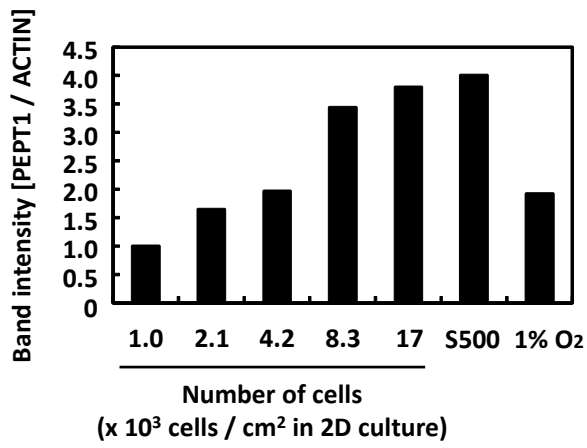
b



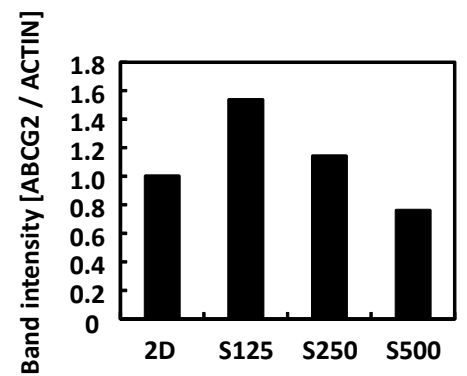
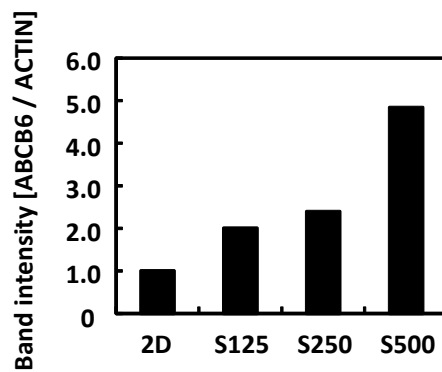
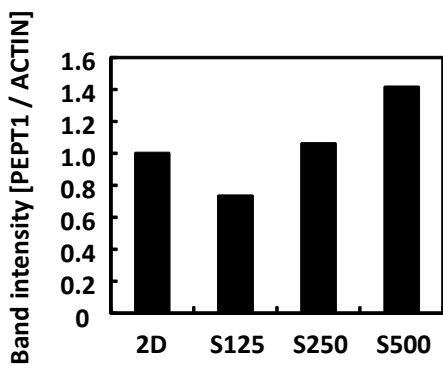
Supplementary Figure S1

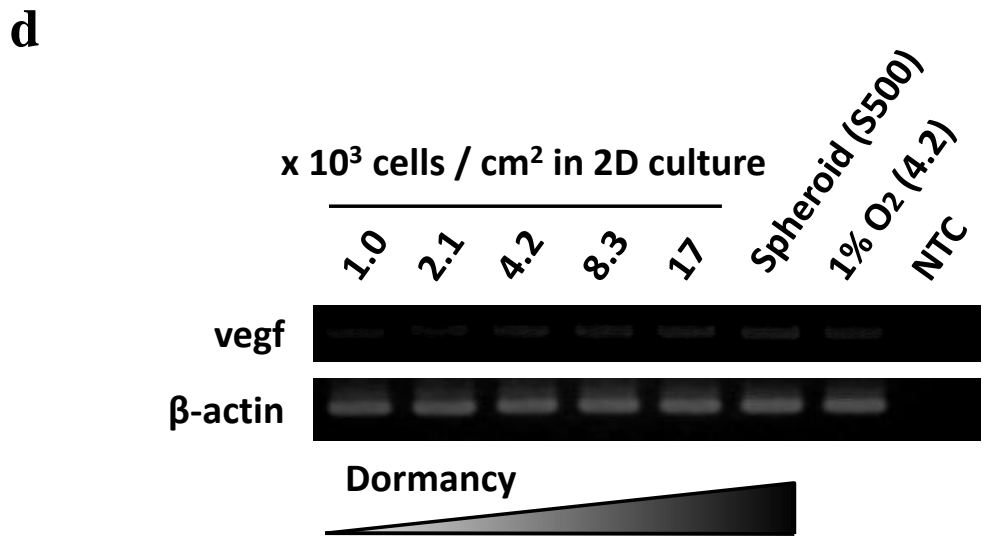
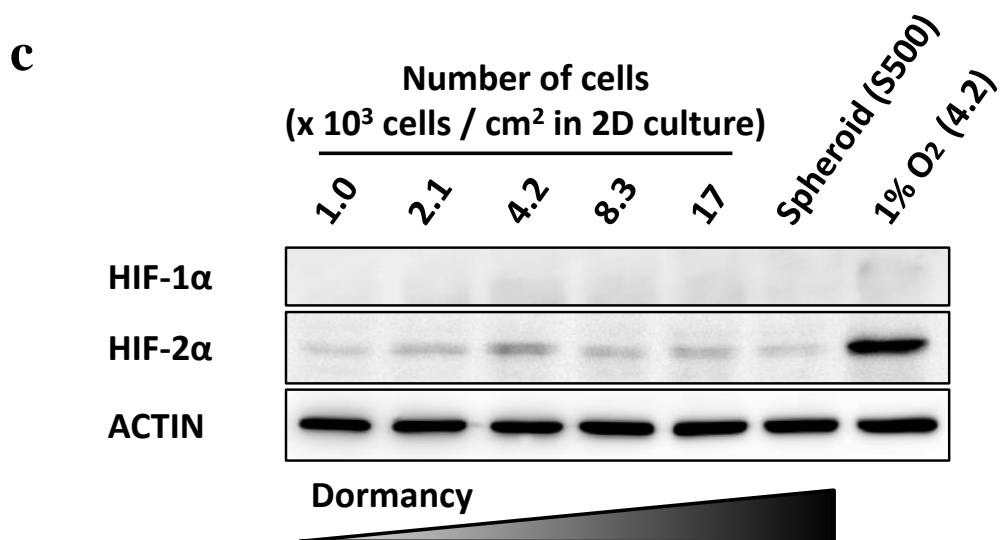
(a) Band intensity of Ki-67 in 2D culture. (b) Band intensity of Ki-67 in spheroids.

a



b

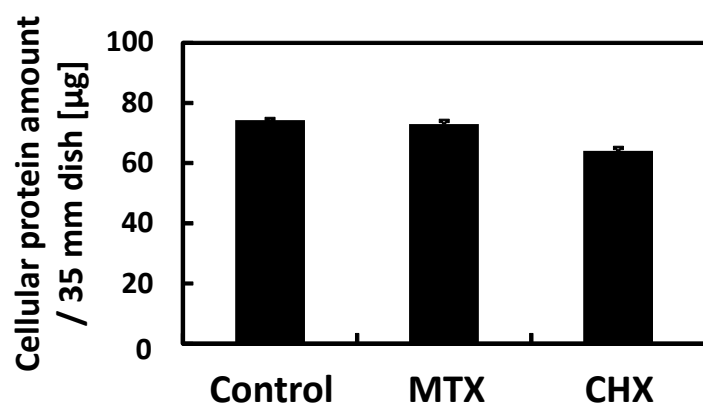




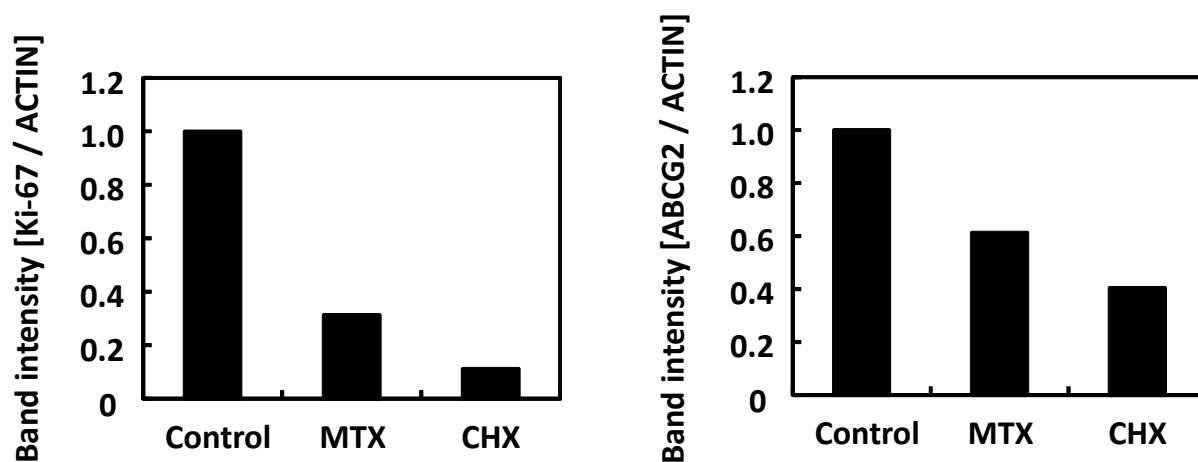
Supplementary Figure 2

(a) Band intensity of PEPT1, ABCB6, and ABCG2 in the 2D culture. (b) Band intensity of PEPT1, ABCB6, and ABCG2 in spheroids. (c) HIF protein expression at different cell densities was detected by Western blotting. (d) VEGF mRNA expression at different cell densities was detected by RT-PCR. NTC: no template control

a



b



Supplementary Figure 3

(a) Cellular protein amount per 35-mm dish. Cells were incubated with methotrexate or cycloheximide for 48 h.

Protein concentration was measured by Bradford assay. $n = 3$. (b) Band intensity of Ki-67 and ABCG2.