



Supporting Information

for *Adv. Sci.*, DOI: 10.1002/advs.201500004

MoS₂ Nanosheet–Pd Nanoparticle Composite for Highly Sensitive Room Temperature Detection of Hydrogen

*Cihan Kuru, Chulmin Choi, Alireza Kargar, Duyoung Choi, Young Jin Kim, Chin Hung Liu, Serdar Yavuz, and Sungho Jin**

Supporting Information

MoS₂ nanosheet-Pd nanoparticle composite for highly sensitive room temperature detection of hydrogen

*Cihan Kuru, Chulmin Choi, Alireza Kargar, Duyoung Choi, Young Jin Kim, Chin Hung Liu, Serdar Yavuz, and Sungho Jin**

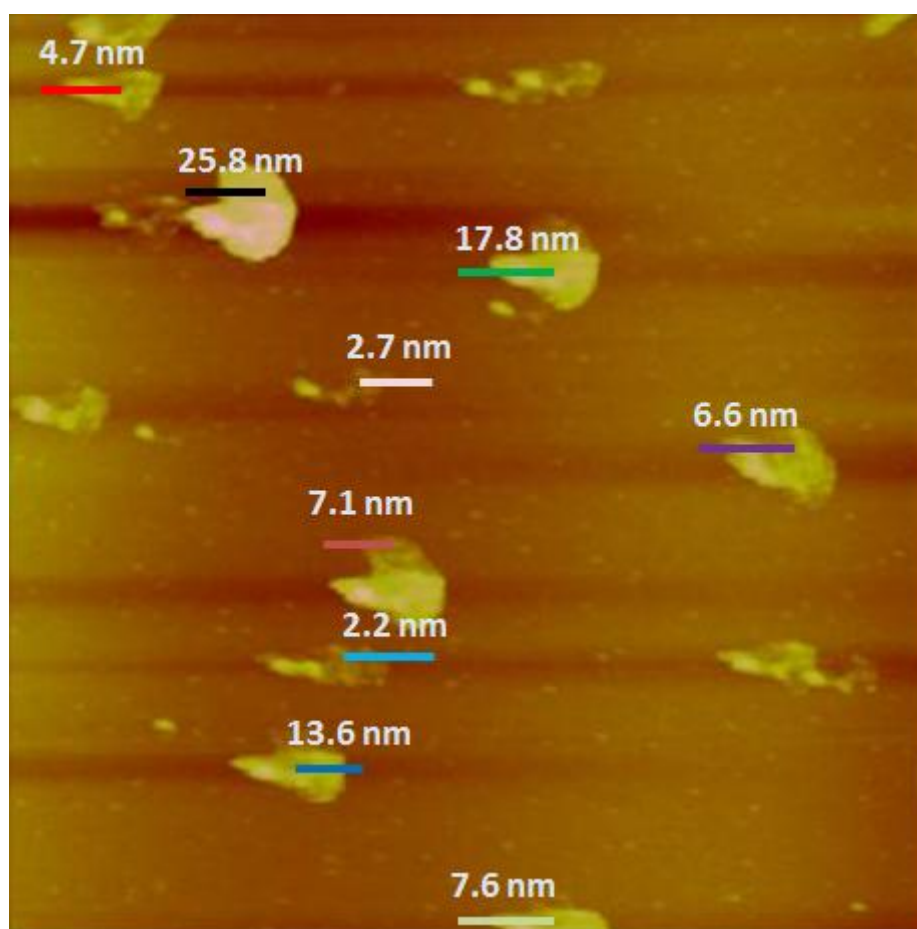


Figure S1. AFM image of MoS₂ flakes dispersed on a Si substrate.

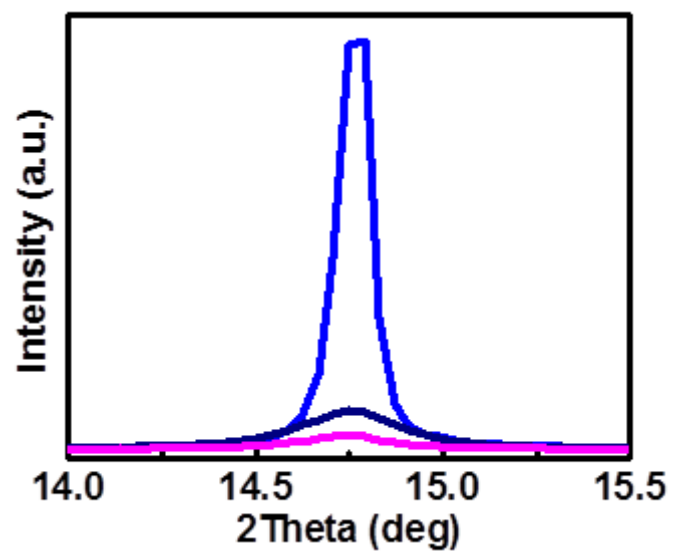


Figure S2. (002) XRD peak of bulk MoS₂ (blue curve), MoS₂ nanosheets (navy curve) and MoS₂-Pd composite (magenta curve).

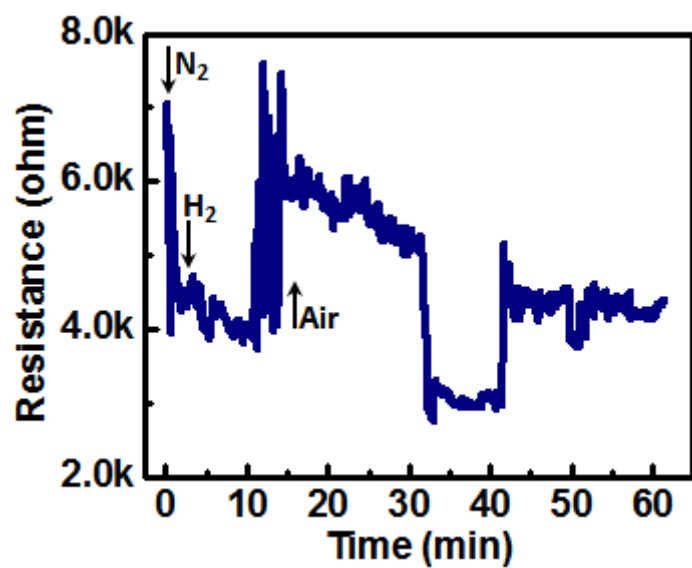


Figure S3. Electrical response of MoS₂ nanosheets to 50,000 ppm H₂.

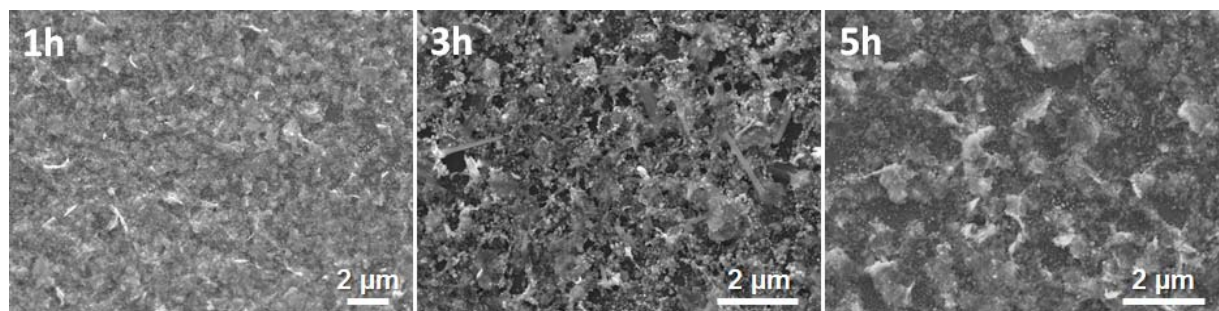


Figure S4. SEM images of MoS₂-Pd composites annealed at 500° C for (a) 1h, (b) 3h and (c) 5 h.

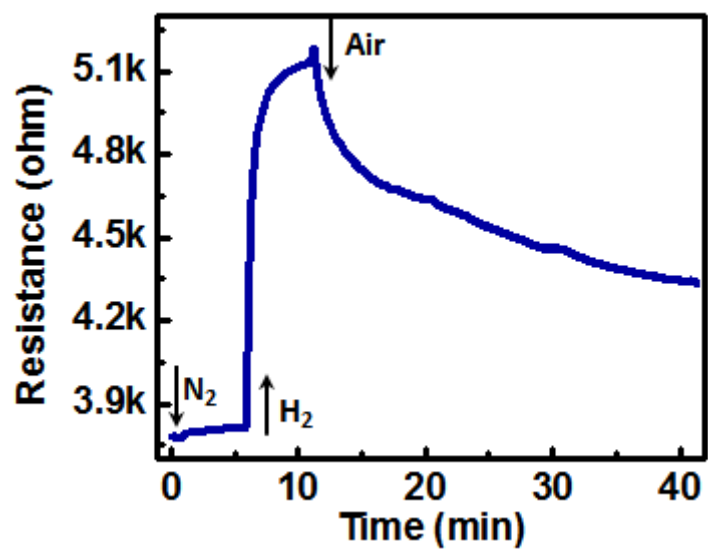


Figure S5. Electrical response of graphene-Pd composite to 50,000 ppm H₂.

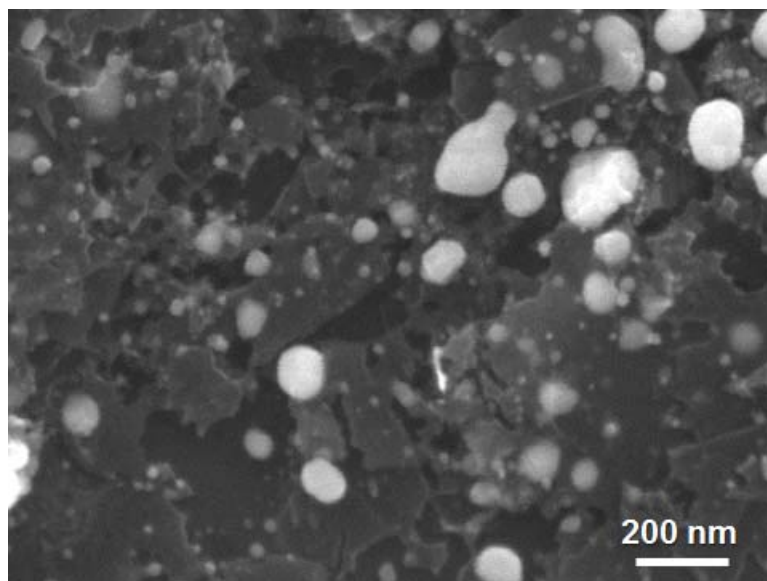


Figure S6. SEM image of graphene-Pd composite.